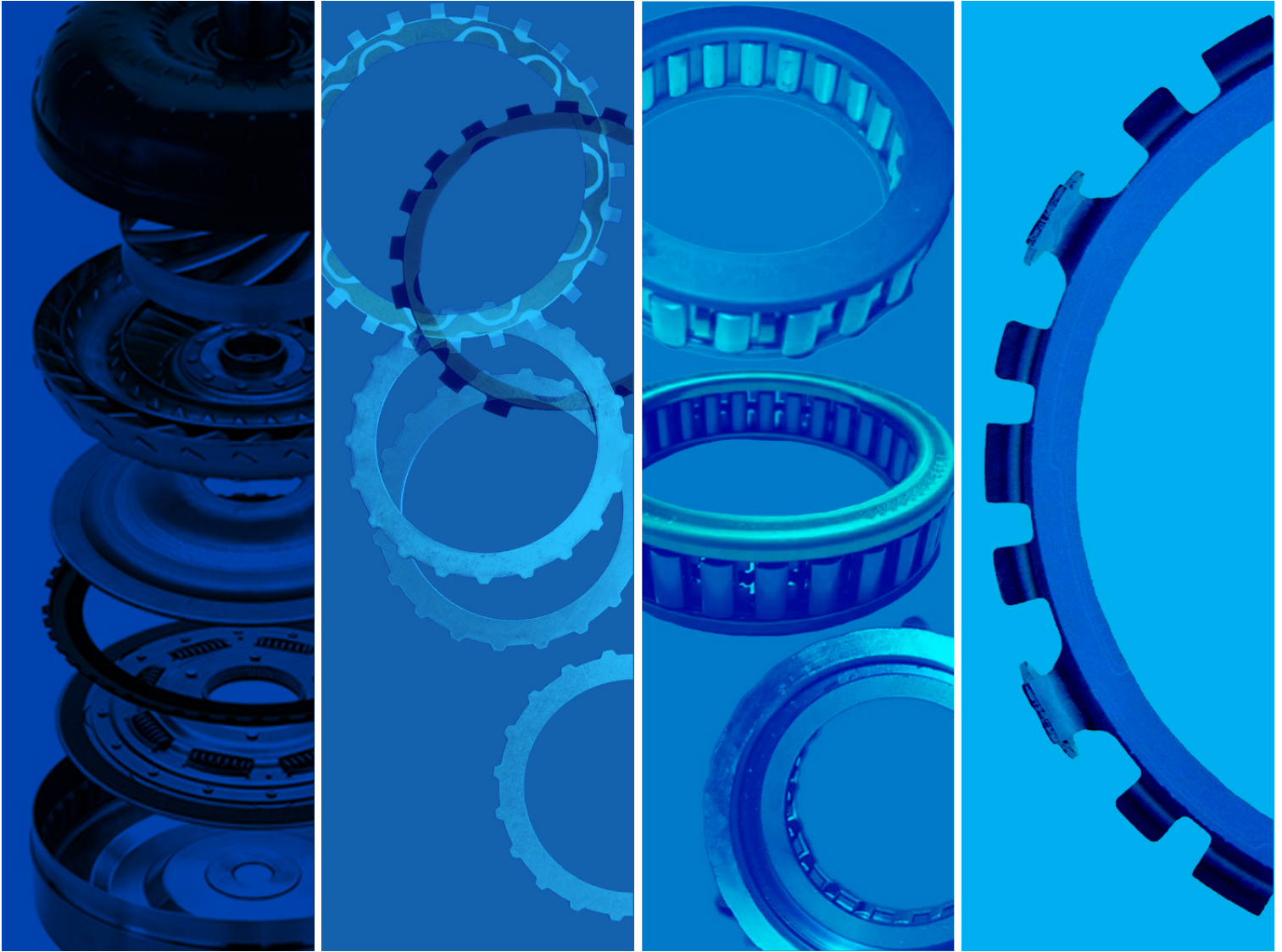




ALTO PRODUCTS CORP.

One Alto Way • Atmore • AL • 36502 • USA • (251) 368-7777 • Fax: (251) 368-7774 • www.altoUSA.com



TORQUE CONVERTER

Torque Converter Rings

GM 245mm, Small Snubber

ALTO	ID (in)	OD (in)	OAT	*	Material	Ray	BW	Tri	Sonnax	Abco
T1534K1	1.589	2.119	.045	*	Green	N/A	N/A	SX-23-SS45	GM-F-4B	N/A
T1534CF	1.589	2.119	.045	*	Carbon	N/A	N/A	SX-23-SS45	GM-F-4B	N/A
T1534CM	1.589	2.119	.045	*	Carbon Matrix	N/A	N/A	SX-23-SS45	GM-F-4B	N/A

GM 298mm, Large Snubber

ALTO	ID (in)	OD (in)	OAT	*	Material	Ray	BW	Tri	Sonnax	Abco
T1544K1	2.119	2.368	.045	*	Green	N/A	N/A	SX-23-LS45	N/A	N/A
T1544CF	2.119	2.368	.045	*	Carbon	N/A	N/A	SX-23-LS45	N/A	N/A
T1544CM	2.119	2.368	.045	*	Carbon Matrix	N/A	N/A	SX-23-LS45	N/A	N/A

Various

ALTO	ID (in)	OD (in)	OAT	*	Material	Ray	BW	Tri	Sonnax	Abco
T1234K1	6.294	7.177	.045	*	Green	N/A	N/A	N/A	N/A	N/A
T1234CF	6.294	7.177	.045	*	Carbon	N/A	N/A	N/A	N/A	N/A
T1234CM	6.294	7.177	.045	*	Carbon Matrix	N/A	N/A	N/A	N/A	N/A
T1237K1	6.294	7.177	.070	*	Green	N/A	N/A	N/A	N/A	N/A
T1237CF	6.294	7.177	.070	*	Carbon	N/A	N/A	N/A	N/A	N/A
T1237CM	6.294	7.177	.070	*	Carbon Matrix	N/A	N/A	N/A	N/A	N/A

ZF6HP26 Multi-Clutch

ALTO	ID (in)	OD (in)	OAT	*	Material	Ray	BW	Tri	Sonnax	Abco
T2244K1	6.300	7.300	.045	*	Green	N/A	N/A	N/A	N/A	N/A
T2244CF	6.300	7.300	.045	*	Carbon	N/A	N/A	N/A	N/A	N/A
T2244CM	6.300	7.300	.045	*	Carbon Matrix	N/A	N/A	N/A	N/A	N/A
T2247K1	6.300	7.300	.070	*	Green	N/A	N/A	N/A	N/A	N/A
T2247CF	6.300	7.300	.070	*	Carbon	N/A	N/A	N/A	N/A	N/A
T2247CM	6.300	7.300	.070	*	Carbon Matrix	N/A	N/A	N/A	N/A	N/A

G M Various

ALTO	ID (in)	OD (in)	OAT	*	Material	Ray	BW	Tri	Sonnax	Abco
T1554K1	6.375	8.000	.045	*	Green	N/A	N/A	SX-23-42	N/A	N/A
T1554CF	6.375	8.000	.045	*	Carbon	N/A	N/A	SX-23-42	N/A	N/A
T1554CM	6.375	8.000	.045	*	Carbon Matrix	N/A	N/A	SX-23-42	N/A	N/A
T1557K1	6.375	8.000	.070	*	Green	N/A	N/A	SX-23-42X70	N/A	N/A
T1557CF	6.375	8.000	.070	*	Carbon	N/A	N/A	SX-23-42X70	N/A	N/A
T1557CM	6.375	8.000	.070	*	Carbon Matrix	N/A	N/A	SX-23-42X70	N/A	N/A

A4LD Multi Clutch

ALTO	ID (in)	OD (in)	OAT	*	Material	Ray	BW	Tri	Sonnax	Abco
T1564K1	6.438	6.813	.045	*	Green	R445170	B45170	FX-23-17	FD-F-11	N/A
T1564CF	6.438	6.813	.045	*	Carbon	R445170	B45170	FX-23-17	FD-F-11	N/A
T1564CM	6.438	6.813	.045	*	Carbon Matrix	R445170	B45170	FX-23-17	FD-F-11	N/A
T1567K1	6.438	6.813	.070	*	Green	R475170	B66170	FX-23-17X70	N/A	N/A
T1567CF	6.438	6.813	.070	*	Carbon	R475170	B66170	FX-23-17X70	N/A	N/A
T1567CM	6.438	6.813	.070	*	Carbon Matrix	R475170	B66170	FX-23-17X70	N/A	N/A

DPO

ALTO	ID (in)	OD (in)	OAT	*	Material	Ray	BW	Tri	Sonnax	Abco
T1574K1	6.685	7.500	.045	*	Green	R445420	B45420	RX-23-1	RE-F-1	N/A
T1574CF	6.685	7.500	.045	*	Carbon	R445420	B45420	RX-23-1	RE-F-1	N/A
T1574CM	6.685	7.500	.045	*	Carbon Matrix	R445420	B45420	RX-23-1	RE-F-1	N/A
T1577K1	6.685	7.500	.070	*	Green	R475420	N/A	RX-23-1X70	N/A	N/A
T1577CF	6.685	7.500	.070	*	Carbon	R475420	N/A	RX-23-1X70	N/A	N/A
T1577CM	6.685	7.500	.070	*	Carbon Matrix	R475420	N/A	RX-23-1X70	N/A	N/A

Torque Converter Rings

DPO, AL4

ALTO	ID (in)	OD (in)	OAT	*	Material	Ray	BW	Tri	Sonnax	Abco
T1584K1	7.100	7.930	.045	*	Green	R445620	B45620	N/A	N/A	N/A
T1584CF	7.100	7.930	.045	*	Carbon	R445620	B45620	N/A	N/A	N/A
T1584CM	7.100	7.930	.045	*	Carbon Matrix	R445620	B45620	N/A	N/A	N/A

L3N71B, A131

ALTO	ID (in)	OD (in)	OAT	*	Material	Ray	BW	Tri	Sonnax	Abco
T1594K1	7.125	8.250	.045	*	Green	R445160	B45160	YX23-2	N/A	N/A
T1594CF	7.125	8.250	.045	*	Carbon	R445160	B45160	YX23-2	N/A	N/A
T1594CM	7.125	8.250	.045	*	Carbon Matrix	R445160	B45160	YX23-2	N/A	N/A
T1597K1	7.125	8.250	.070	*	Green	R475160	B66160	YX23-2X70	N/A	N/A
T1597CF	7.125	8.250	.070	*	Carbon	R475160	B66160	YX23-2X70	N/A	N/A
T1597CM	7.125	8.250	.070	*	Carbon Matrix	R475160	B66160	YX23-2X70	N/A	N/A

Various

ALTO	ID (in)	OD (in)	OAT	*	Material	Ray	BW	Tri	Sonnax	Abco
T2234K1	7.125	9.875	.045	*	Green	N/A	N/A	N/A	N/A	N/A
T2234CF	7.125	9.875	.045	*	Carbon	N/A	N/A	N/A	N/A	N/A
T2234CM	7.125	9.875	.045	*	Carbon Matrix	N/A	N/A	N/A	N/A	N/A
T2237K1	7.125	9.875	.070	*	Green	N/A	N/A	N/A	N/A	N/A
T2237CF	7.125	9.875	.070	*	Carbon	N/A	N/A	N/A	N/A	N/A
T2237CM	7.125	9.875	.070	*	Carbon Matrix	N/A	N/A	N/A	N/A	N/A

Various

ALTO	ID (in)	OD (in)	OAT	*	Material	Ray	BW	Tri	Sonnax	Abco
T2294K1	7.150	10.100	.045	*	Green	N/A	N/A	N/A	N/A	N/A
T2294CF	7.150	10.100	.045	*	Carbon	N/A	N/A	N/A	N/A	N/A
T2294CM	7.150	10.100	.045	*	Carbon Matrix	N/A	N/A	N/A	N/A	N/A
T2297K1	7.150	10.100	.070	*	Green	N/A	N/A	N/A	N/A	N/A
T2297CF	7.150	10.100	.070	*	Carbon	N/A	N/A	N/A	N/A	N/A
T2297CM	7.150	10.100	.070	*	Carbon Matrix	N/A	N/A	N/A	N/A	N/A

Various

ALTO	ID (in)	OD (in)	OAT	*	Material	Ray	BW	Tri	Sonnax	Abco
T2304K1	7.150	10.600	.045	*	Green	N/A	N/A	N/A	N/A	N/A
T2304CF	7.150	10.600	.045	*	Carbon	N/A	N/A	N/A	N/A	N/A
T2304CM	7.150	10.600	.045	*	Carbon Matrix	N/A	N/A	N/A	N/A	N/A
T2307K1	7.150	10.600	.070	*	Green	N/A	N/A	N/A	N/A	N/A
T2307CF	7.150	10.600	.070	*	Carbon	N/A	N/A	N/A	N/A	N/A
T2307CM	7.150	10.600	.070	*	Carbon Matrix	N/A	N/A	N/A	N/A	N/A

Various

ALTO	ID (in)	OD (in)	OAT	*	Material	Ray	BW	Tri	Sonnax	Abco
T1514K1	7.250	8.500	.045	*	Green	R445360	B45360	N/A	N/A	N/A
T1514CF	7.250	8.500	.045	*	Carbon	R445360	B45360	N/A	N/A	N/A
T1514CM	7.250	8.500	.045	*	Carbon Matrix	R445360	B45360	N/A	N/A	N/A
T1517K1	7.250	8.500	.070	*	Green	R475360	B66360	N/A	N/A	N/A
T1517CF	7.250	8.500	.070	*	Carbon	R475360	B66360	N/A	N/A	N/A
T1517CM	7.250	8.500	.070	*	Carbon Matrix	R475360	B66360	N/A	N/A	N/A

Torque Converter Rings

AW81-40, U440E

ALTO	ID (in)	OD (in)	OAT	*	Material	Ray	BW	Tri	Sonnax	Abco
T1244K1	7.280	8.070	.045		Green	R445640	B45640	N/A	N/A	N/A
T1244CF	7.280	8.070	.045		Carbon	R445640	B45640	N/A	N/A	N/A
T1244CM	7.280	8.070	.045		Carbon Matrix	R445640	B45640	N/A	N/A	N/A
T1247K1	7.280	8.070	.070		Green	R475640	N/A	N/A	N/A	N/A
T1247CF	7.280	8.070	.070		Carbon	R475640	N/A	N/A	N/A	N/A
T1247CM	7.280	8.070	.070		Carbon Matrix	R475640	N/A	N/A	N/A	N/A

5R55N W/ Modulated Groove

ALTO	ID (in)	OD (in)	OAT	*	Material	Ray	BW	Tri	Sonnax	Abco
T1604K1G	7.281	8.250	.045	*	Green	N/A	N/A	FX-23-47	N/A	N/A
T1604CFG	7.281	8.250	.045	*	Carbon	N/A	N/A	FX-23-47	N/A	N/A
T1604CMG	7.281	8.250	.045	*	Carbon Matrix	N/A	N/A	FX-23-47	N/A	N/A
T1607K1G	7.281	8.250	.070	*	Green	N/A	N/A	FX-23-47MX70	N/A	N/A
T1607CFG	7.281	8.250	.070	*	Carbon	N/A	N/A	FX-23-47MX70	N/A	N/A
T1607CMG	7.281	8.250	.070	*	Carbon Matrix	N/A	N/A	FX-23-47MX70	N/A	N/A

L3N71B

ALTO	ID (in)	OD (in)	OAT	*	Material	Ray	BW	Tri	Sonnax	Abco
T1614K1	7.500	8.375	.045	*	Green	N/A	N/A	JX-23-1	N/A	66A
T1614CF	7.500	8.375	.045	*	Carbon	N/A	N/A	JX-23-1	N/A	66A
T1614CM	7.500	8.375	.045	*	Carbon Matrix	N/A	N/A	JX-23-1	N/A	66A
T1617K1	7.500	8.375	.070	*	Green	N/A	N/A	JX-23-1X70	N/A	66C
T1617CF	7.500	8.375	.070	*	Carbon	N/A	N/A	JX-23-1X70	N/A	66C
T1617CM	7.500	8.375	.070	*	Carbon Matrix	N/A	N/A	JX-23-1X70	N/A	66C

4F50N, 5R55

ALTO	ID (in)	OD (in)	OAT	*	Material	Ray	BW	Tri	Sonnax	Abco
T1484K1	7.500	9.000	.045		Green	R445570	N/A	N/A	N/A	N/A
T1484CF	7.500	9.000	.045		Carbon	R445570	N/A	N/A	N/A	N/A
T1484CM	7.500	9.000	.045		Carbon Matrix	R445570	N/A	N/A	N/A	N/A
T1487K1	7.500	9.000	.070		Green	R475570	B66570	N/A	N/A	N/A
T1487CF	7.500	9.000	.070		Carbon	R475570	B66570	N/A	N/A	N/A
T1487CM	7.500	9.000	.070		Carbon Matrix	R475570	B66570	N/A	N/A	N/A

GM 245mm HP

ALTO	ID (in)	OD (in)	OAT	*	Material	Ray	BW	Tri	Sonnax	Abco
T1624CM	7.500	9.188	.045	*	Carbon Matrix	N/A	N/A	SX-23-48HC	GM-F-17HC	N/A

Various

ALTO	ID (in)	OD (in)	OAT	*	Material	Ray	BW	Tri	Sonnax	Abco
T1634K1	7.500	10.100	.045	*	Green	R445670	B45670	N/A	N/A	N/A
T1634CF	7.500	10.100	.045	*	Carbon	R445670	B45670	N/A	N/A	N/A
T1634CM	7.500	10.100	.045	*	Carbon Matrix	R445670	B45670	N/A	N/A	N/A

Various

ALTO	ID (in)	OD (in)	OAT	*	Material	Ray	BW	Tri	Sonnax	Abco
T1254K1	7.500	10.125	.045	*	Green	N/A	N/A	JX-23-24	N/A	N/A
T1254CF	7.500	10.125	.045	*	Carbon	N/A	N/A	JX-23-24	N/A	N/A
T1254CM	7.500	10.125	.045	*	Carbon Matrix	N/A	N/A	JX-23-24	N/A	N/A
T1257K1	7.500	10.125	.070	*	Green	N/A	N/A	JX-23-24X70	N/A	N/A
T1257CF	7.500	10.125	.070	*	Carbon	N/A	N/A	JX-23-24X70	N/A	N/A
T1257CM	7.500	10.125	.070	*	Carbon Matrix	N/A	N/A	JX-23-24X70	N/A	N/A

Torque Converter Rings

Various (fx)

ALTO	ID (in)	OD (in)	OAT	*	Material	Ray	BW	Tri	Sonnax	Abco
T2274K1	7.500	10.500	.045	*	Green	N/A	N/A	N/A	N/A	N/A
T2274CF	7.500	10.500	.045	*	Carbon	N/A	N/A	N/A	N/A	N/A
T2274CM	7.500	10.500	.045	*	Carbon Matrix	N/A	N/A	N/A	N/A	N/A

Various

ALTO	ID (in)	OD (in)	OAT	*	Material	Ray	BW	Tri	Sonnax	Abco
T2254K1	7.591	8.850	.045	*	Green	R445650	B45650	N/A	N/A	N/A
T2254CF	7.591	8.850	.045	*	Carbon	R445650	B45650	N/A	N/A	N/A
T2254CM	7.591	8.850	.045	*	Carbon Matrix	R445650	B45650	N/A	N/A	N/A

Saturn Vue CVT

ALTO	ID (in)	OD (in)	OAT	*	Material	Ray	BW	Tri	Sonnax	Abco
T2264K1	7.600	8.675	.045	*	Green	N/A	N/A	N/A	N/A	N/A
T2264CF	7.600	8.675	.045	*	Carbon	N/A	N/A	N/A	N/A	N/A
T2264CM	7.600	8.675	.045	*	Carbon Matrix	N/A	N/A	N/A	N/A	N/A
T2267K1	7.600	8.675	.070	*	Green	N/A	N/A	N/A	N/A	N/A
T2267CF	7.600	8.675	.070	*	Carbon	N/A	N/A	N/A	N/A	N/A
T2267CM	7.600	8.675	.070	*	Carbon Matrix	N/A	N/A	N/A	N/A	N/A

Nissan Micra

ALTO	ID (in)	OD (in)	OAT	*	Material	Ray	BW	Tri	Sonnax	Abco
T1644K1	7.625	8.250	.045		Green	N/A	N/A	JX-23-24	N/A	N/A
T1644CF	7.625	8.250	.045		Carbon	N/A	N/A	JX-23-24	N/A	N/A
T1644CM	7.625	8.250	.045		Carbon Matrix	N/A	N/A	JX-23-24	N/A	N/A
T1647K1	7.625	8.250	.070		Green	N/A	N/A	JX-23-24X70	N/A	N/A
T1647CF	7.625	8.250	.070		Carbon	N/A	N/A	JX-23-24X70	N/A	N/A
T1647CM	7.625	8.250	.070		Carbon Matrix	N/A	N/A	JX-23-24X70	N/A	N/A

Various

ALTO	ID (in)	OD (in)	OAT	*	Material	Ray	BW	Tri	Sonnax	Abco
T1654K1	7.625	9.125	.045	*	Green	R445220	B45220	N/A	N/A	N/A
T1654CF	7.625	9.125	.045	*	Carbon	R445220	B45220	N/A	N/A	N/A
T1654CM	7.625	9.125	.045	*	Carbon Matrix	R445220	B45220	N/A	N/A	N/A
T1657K1	7.625	9.125	.070	*	Green	R475220	B66220	N/A	N/A	N/A
T1657CF	7.625	9.125	.070	*	Carbon	R475220	B66220	N/A	N/A	N/A
T1657CM	7.625	9.125	.070	*	Carbon Matrix	R475220	B66220	N/A	N/A	N/A

Chry 9-1/2

ALTO	ID (in)	OD (in)	OAT	*	Material	Ray	BW	Tri	Sonnax	Abco
T1394K1	7.625	9.625	.045		Green	R445210	B45210	TX-23-18	CH-F-10	N/A
T1394CF	7.625	9.625	.045		Carbon	R445210	B45210	TX-23-18	CH-F-10	N/A
T1394CM	7.625	9.625	.045		Carbon Matrix	R445210	B45210	TX-23-18	CH-F-10	N/A
T1397K1	7.625	9.625	.070		Green	R475210	B66210	TX-23-18X70	CH-F-11	75-P
T1397CF	7.625	9.625	.070		Carbon	R475210	B66210	TX-23-18X70	CH-F-11	75-P
T1397CM	7.625	9.625	.070		Carbon Matrix	R475210	B66210	TX-23-18X70	CH-F-11	75-P

Chry 9-1/2

ALTO	ID (in)	OD (in)	OAT	*	Material	Ray	BW	Tri	Sonnax	Abco
T1454K1	7.745	9.125	.045		Green	R445220	B45220	TX-23-15	N/A	N/A
T1454CF	7.745	9.125	.045		Carbon	R445220	B45220	TX-23-15	N/A	N/A
T1454CM	7.745	9.125	.045		Carbon Matrix	R445220	B45220	TX-23-15	N/A	N/A
T1457K1	7.745	9.125	.070		Green	R475220	B66220	TX-23-15X70	CH-F-18	N/A
T1457CF	7.745	9.125	.070		Carbon	R475220	B66220	TX-23-15X70	CH-F-18	N/A
T1457CM	7.745	9.125	.070		Carbon Matrix	R475220	B66220	TX-23-15X70	CH-F-18	N/A

Torque Converter Rings

AS/F4

ALTO	ID (in)	OD (in)	OAT	*	Material	Ray	BW	Tri	Sonnax	Abco
T1464K1	7.750	8.750	.045		Green	R445150	B45150	NX-23-1	HO-F-1	69
T1464CF	7.750	8.750	.045		Carbon	R445150	B45150	NX-23-1	HO-F-1	69
T1464CM	7.750	8.750	.045		Carbon Matrix	R445150	B45150	NX-23-1	HO-F-1	69
T1467K1	7.750	8.750	.070		Green	R475150	B66150	NX-23-1X70	HO-F-2	69A
T1467CF	7.750	8.750	.070		Carbon	R475150	B66150	NX-23-1X70	HO-F-2	69A
T1467CM	7.750	8.750	.070		Carbon Matrix	R475150	B66150	NX-23-1X70	HO-F-2	69A

GM 245mm, HP 10" Kit: AODE/4R70W GM 298/300mm, 4L80E

ALTO	ID (in)	OD (in)	OAT	*	Material	Ray	BW	Tri	Sonnax	Abco
T1444K1	7.750	9.000	.045		Green	R445320	B45320	SX-23-13	CH-F-5	56B
T1444CF	7.750	9.000	.045		Carbon	R445320	B45320	SX-23-13	CH-F-5	56B
T1444CM	7.750	9.000	.045		Carbon Matrix	R445320	B45320	SX-23-13	CH-F-5	56B
T1447K1	7.750	9.000	.070		Green	R475320	B66320	SX-23-13X70	CH-F-8	56D
T1447CF	7.750	9.000	.070		Carbon	R475320	B66320	SX-23-13X70	CH-F-8	56D
T1447CM	7.750	9.000	.070		Carbon Matrix	R475320	B66320	SX-23-13X70	CH-F-8	56D

Various

ALTO	ID (in)	OD (in)	OAT	*	Material	Ray	BW	Tri	Sonnax	Abco
T1024K1	7.750	9.125	.045		Green	N/A	N/A	TX-23-15	N/A	N/A
T1024CF	7.750	9.125	.045		Carbon	N/A	N/A	TX-23-15	N/A	N/A
T1024CM	7.750	9.125	.045		Carbon Matrix	N/A	N/A	TX-23-15	N/A	N/A
T1027K1	7.750	9.125	.070		Green	N/A	N/A	TX-23-15X70	CH-F-18	N/A
T1027CF	7.750	9.125	.070		Carbon	N/A	N/A	TX-23-15X70	CH-F-18	N/A
T1027CM	7.750	9.125	.070		Carbon Matrix	N/A	N/A	TX-23-15X70	CH-F-18	N/A

Chrysler Various

ALTO	ID (in)	OD (in)	OAT	*	Material	Ray	BW	Tri	Sonnax	Abco
T1664K1	7.750	9.375	.045	*	Green	N/A	N/A	TX-23-12	N/A	N/A
T1664CF	7.750	9.375	.045	*	Carbon	N/A	N/A	TX-23-12	N/A	N/A
T1664CM	7.750	9.375	.045	*	Carbon Matrix	N/A	N/A	TX-23-12	N/A	N/A
T1667K1	7.750	9.375	.070	*	Green	N/A	N/A	TX-23-12X70	N/A	N/A
T1667CF	7.750	9.375	.070	*	Carbon	N/A	N/A	TX-23-12X70	N/A	N/A
T1667CM	7.750	9.375	.070	*	Carbon Matrix	N/A	N/A	TX-23-12X70	N/A	N/A

Chrysler 10 LU

ALTO	ID (in)	OD (in)	OAT	*	Material	Ray	BW	Tri	Sonnax	Abco
T1674K1	7.813	9.125	.045	*	Green	N/A	N/A	TX-23-16	CH-F-16	N/A
T1674CF	7.813	9.125	.045	*	Carbon	N/A	N/A	TX-23-16	CH-F-16	N/A
T1674CM	7.813	9.125	.045	*	Carbon Matrix	N/A	N/A	TX-23-16	CH-F-16	N/A
T1677K1	7.813	9.125	.070	*	Green	N/A	N/A	TX-23-16X70	CH-F-17	N/A
T1677CF	7.813	9.125	.070	*	Carbon	N/A	N/A	TX-23-16X70	CH-F-17	N/A
T1677CM	7.813	9.125	.070	*	Carbon Matrix	N/A	N/A	TX-23-16X70	CH-F-17	N/A

AX4S, AX4N W/ Modulated Groove

ALTO	ID (in)	OD (in)	OAT	*	Material	Ray	BW	Tri	Sonnax	Abco
T1684K1G	7.875	9.000	.045	*	Green	N/A	N/A	FX-23-29M	FD-F-15	N/A
T1684CFG	7.875	9.000	.045	*	Carbon	N/A	N/A	FX-23-29M	FD-F-15	N/A
T1684CMG	7.875	9.000	.045	*	Carbon Matrix	N/A	N/A	FX-23-29M	FD-F-15	N/A
T1687K1G	7.875	9.000	.070	*	Green	N/A	N/A	FX-23-29MX70	N/A	75G
T1687CFG	7.875	9.000	.070	*	Carbon	N/A	N/A	FX-23-29MX70	N/A	75G
T1687CMG	7.875	9.000	.070	*	Carbon Matrix	N/A	N/A	FX-23-29MX70	N/A	75G

Torque Converter Rings

AX4S, AX4N WO/ Modulated Groove

ALTO	ID (in)	OD (in)	OAT	*	Material	Ray	BW	Tri	Sonnax	Abco
T1684K1	7.875	9.000	.045	*	Green	N/A	N/A	FX-23-29M	FD-F-15	N/A
T1684CF	7.875	9.000	.045	*	Carbon	N/A	N/A	FX-23-29M	FD-F-15	N/A
T1684CM	7.875	9.000	.045	*	Carbon Matrix	N/A	N/A	FX-23-29M	FD-F-15	N/A
T1687K1	7.875	9.000	.070	*	Green	N/A	N/A	FX-23-29MX70	N/A	75G
T1687CF	7.875	9.000	.070	*	Carbon	N/A	N/A	FX-23-29MX70	N/A	75G
T1687CM	7.875	9.000	.070	*	Carbon Matrix	N/A	N/A	FX-23-29MX70	N/A	75G

6HP19

ALTO	ID (in)	OD (in)	OAT	*	Material	Ray	BW	Tri	Sonnax	Abco
T1694K1	7.875	9.134	.045	*	Green	R445740	B45740	N/A	N/A	N/A
T1694CF	7.875	9.134	.045	*	Carbon	R445740	B45740	N/A	N/A	N/A
T1694CM	7.875	9.134	.045	*	Carbon Matrix	R445740	B45740	N/A	N/A	N/A

CD4E Small Cover Modulated Groove

ALTO	ID (in)	OD (in)	OAT	*	Material	Ray	BW	Tri	Sonnax	Abco
T1157K1G	7.875	9.188	.070	*	Green	N/A	N/A	N/A	N/A	N/A
T1157CFG	7.875	9.188	.070	*	Carbon	N/A	N/A	N/A	N/A	N/A
T1157CMG	7.875	9.188	.070	*	Carbon Matrix	N/A	N/A	N/A	N/A	N/A

Chrysler 9 1/2 LU, Nissan Sentra, G4A, 4EAT

ALTO	ID (in)	OD (in)	OAT	*	Material	Ray	BW	Tri	Sonnax	Abco
T1704K1	7.875	9.250	.045	*	Green	N/A	N/A	JX-23-8	CH-F-5	N/A
T1704CF	7.875	9.250	.045	*	Carbon	N/A	N/A	JX-23-8	CH-F-5	N/A
T1704CM	7.875	9.250	.045	*	Carbon Matrix	N/A	N/A	JX-23-8	CH-F-5	N/A
T1707K1	7.875	9.250	.070	*	Green	N/A	N/A	JX-23-8X70	CH-F-8	N/A
T1707CF	7.875	9.250	.070	*	Carbon	N/A	N/A	JX-23-8X70	CH-F-8	N/A
T1707CM	7.875	9.250	.070	*	Carbon Matrix	N/A	N/A	JX-23-8X70	CH-F-8	N/A

TF60SN, A540E, 09G, TO-42

ALTO	ID (in)	OD (in)	OAT	*	Material	Ray	BW	Tri	Sonnax	Abco
T1714K1	7.875	9.312	.045	*	Green	R445520	B45520	YX-23-12	N/A	N/A
T1714CF	7.875	9.312	.045	*	Carbon	R445520	B45520	YX-23-12	N/A	N/A
T1714CM	7.875	9.312	.045	*	Carbon Matrix	R445520	B455202	YX-23-12	N/A	N/A
T1717K1	7.875	9.312	.070	*	Green	R475520	B66520	YX-23-12X70	N/A	N/A
T1717CF	7.875	9.312	.070	*	Carbon	R475520	B66520	YX-23-12X70	N/A	N/A
T1717CM	7.875	9.312	.070	*	Carbon Matrix	R475520	B66520	YX-23-12X70	N/A	N/A

Chrysler A604, A670

ALTO	ID (in)	OD (in)	OAT	*	Material	Ray	BW	Tri	Sonnax	Abco
T1047K1	7.875	9.625	.070	*	Green	N/A	N/A	N/A	N/A	N/A
T1047CF	7.875	9.625	.070	*	Carbon	N/A	N/A	N/A	N/A	N/A
T1047CM	7.875	9.625	.070	*	Carbon Matrix	N/A	N/A	N/A	N/A	N/A

Various

ALTO	ID (in)	OD (in)	OAT	*	Material	Ray	BW	Tri	Sonnax	Abco
T1364K1	7.921	9.921	.045	*	Green	R445205	B45205	N/A	N/A	N/A
T1364CF	7.921	9.921	.045	*	Carbon	R445205	B45205	N/A	N/A	N/A
T1364CM	7.921	9.921	.045	*	Carbon Matrix	R445205	B45205	N/A	N/A	N/A
T1367K1	7.921	9.921	.070	*	Green	R475205	B66205	N/A	N/A	N/A
T1367CF	7.921	9.921	.070	*	Carbon	R475205	B66205	N/A	N/A	N/A
T1367CM	7.921	9.921	.070	*	Carbon Matrix	R475205	B66205	N/A	N/A	N/A

Torque Converter Rings

Chry 10 LU

ALTO	ID (in)	OD (in)	OAT	*	Material	Ray	BW	Tri	Sonnax	Abco
T1724K1	7.945	9.125	.045	*	Green	R445225	B45225	N/A	N/A	N/A
T1724CF	7.945	9.125	.045	*	Carbon	R445225	B45225	N/A	N/A	N/A
T1724CM	7.945	9.125	.045	*	Carbon Matrix	R445225	B45225	N/A	N/A	N/A
T1727K1	7.945	9.125	.070	*	Green	R475225	B66225	N/A	N/A	N/A
T1727CF	7.945	9.125	.070	*	Carbon	R475225	B66225	N/A	N/A	N/A
T1727CM	7.945	9.125	.070	*	Carbon Matrix	R475225	B66225	N/A	N/A	N/A

Chry 9-1/2

ALTO	ID (in)	OD (in)	OAT	*	Material	Ray	BW	Tri	Sonnax	Abco
T1407K1	7.970	9.640	.070		Green	R455000	N/A	N/A	N/A	N/A
T1407CF	7.970	9.640	.070		Carbon	R455000	N/A	N/A	N/A	N/A
T1407CM	7.970	9.640	.070		Carbon Matrix	R455000	N/A	N/A	N/A	N/A

TAAT, L4N71B, R4A-EL

ALTO	ID (in)	OD (in)	OAT	*	Material	Ray	BW	Tri	Sonnax	Abco
T1734K1	8.000	8.875	.045	*	Green	R445130	B45130	SX-23-31	JA-F-2	N/A
T1734CF	8.000	8.875	.045	*	Carbon	R445130	B45130	SX-23-31	JA-F-2	N/A
T1734CM	8.000	8.875	.045	*	Carbon Matrix	R445130	B45130	SX-23-31	JA-F-2	N/A
T1737K1	8.000	8.875	.070	*	Green	R475130	B66130	SX-23-31X70	JA-F-4	N/A
T1737CF	8.000	8.875	.070	*	Carbon	R475130	B66130	SX-23-31X70	JA-F-4	N/A
T1737CM	8.000	8.875	.070	*	Carbon Matrix	R475130	B66130	SX-23-31X70	JA-F-4	N/A

4EAT-G, KM175. KM176

ALTO	ID (in)	OD (in)	OAT	*	Material	Ray	BW	Tri	Sonnax	Abco
T1204K1	8.000	9.000	.045		Green	R445390	B45390	TX-23-6	CC-F-1	84
T1204CF	8.000	9.000	.045		Carbon	R445390	B45390	TX-23-6	CC-F-1	84
T1204CM	8.000	9.000	.045		Carbon Matrix	R445390	B45390	TX-23-6	CC-F-1	84
T1207K1	8.000	9.000	.070		Green	R475390	B66390	TX-23-6X70	CC-F-2	70A
T1207CF	8.000	9.000	.070		Carbon	R475390	B66390	TX-23-6X70	CC-F-2	70A
T1207CM	8.000	9.000	.070		Carbon Matrix	R475390	B66390	TX-23-6X70	CC-F-2	70A

Chrysler 9-1/2 LU

ALTO	ID (in)	OD (in)	OAT	*	Material	Ray	BW	Tri	Sonnax	Abco
T1744K1	8.000	9.625	.045	*	Green	N/A	N/A	TX-23-9	N/A	N/A
T1744CF	8.000	9.625	.045	*	Carbon	N/A	N/A	TX-23-9	N/A	N/A
T1744CM	8.000	9.625	.045	*	Carbon Matrix	N/A	N/A	TX-23-9	N/A	N/A
T1747K1	8.000	9.625	.070	*	Green	N/A	N/A	TX-23-9X70	N/A	98-P
T1747CF	8.000	9.625	.070	*	Carbon	N/A	N/A	TX-23-9X70	N/A	98-P
T1747CM	8.000	9.625	.070	*	Carbon Matrix	N/A	N/A	TX-23-9X70	N/A	98-P

Various

ALTO	ID (in)	OD (in)	OAT	*	Material	Ray	BW	Tri	Sonnax	Abco
T1754K1	8.000	10.125	.045	*	Green	N/A	N/A	N/A	FD-F-1	N/A
T1754CF	8.000	10.125	.045	*	Carbon	N/A	N/A	N/A	FD-F-1	N/A
T1754CM	8.000	10.125	.045	*	Carbon Matrix	N/A	N/A	N/A	FD-F-1	N/A

TAAT

ALTO	ID (in)	OD (in)	OAT	*	Material	Ray	BW	Tri	Sonnax	Abco
T1764K1	8.062	8.843	.045	*	Green	R445140	B45140	N/A	N/A	N/A
T1764CF	8.062	8.843	.045	*	Carbon	R445140	B45140	N/A	N/A	N/A
T1764CM	8.062	8.843	.045	*	Carbon Matrix	R445140	B45140	N/A	N/A	N/A
T1767K1	8.062	8.843	.070	*	Green	R475140	B66140	N/A	N/A	N/A
T1767CF	8.062	8.843	.070	*	Carbon	R475140	B66140	N/A	N/A	N/A
T1767CM	8.062	8.843	.070	*	Carbon Matrix	R475140	B66140	N/A	N/A	N/A

Torque Converter Rings

AXOD, AXODE 3.8L, CD4E W/ Modulated Groove

ALTO	ID (in)	OD (in)	OAT	*	Material	Ray	BW	Tri	Sonnax	Abco
T1144K1G	8.062	9.688	.045		Green	N/A	N/A	FX-23-25M	FD-F-13	N/A
T1144CFG	8.062	9.688	.045		Carbon	N/A	N/A	FX-23-25M	FD-F-13	N/A
T1144CMG	8.062	9.688	.045		Carbon Matrix	N/A	N/A	FX-23-25M	FD-F-13	N/A
T1147K1G	8.062	9.688	.070		Green	N/A	N/A	FX-23-25MX70	N/A	N/A
T1147CFG	8.062	9.688	.070		Carbon	N/A	N/A	FX-23-25MX70	N/A	N/A
T1147CMG	8.062	9.688	.070		Carbon Matrix	N/A	N/A	FX-23-25MX70	N/A	N/A

CD4E W/ Modulated Groove

ALTO	ID (in)	OD (in)	OAT	*	Material	Ray	BW	Tri	Sonnax	Abco
T1774K1G	8.063	9.125	.045	*	Green	N/A	N/A	FX-23-24M	N/A	N/A
T1774CFG	8.063	9.125	.045	*	Carbon	N/A	N/A	FX-23-24M	N/A	N/A
T1774CMG	8.063	9.125	.045	*	Carbon Matrix	N/A	N/A	FX-23-24M	N/A	N/A
T1777K1G	8.063	9.125	.070	*	Green	N/A	N/A	FX-23-24MX70	N/A	75F
T1777CFG	8.063	9.125	.070	*	Carbon	N/A	N/A	FX-23-24MX70	N/A	75F
T1777CMG	8.063	9.125	.070	*	Carbon Matrix	N/A	N/A	FX-23-24MX70	N/A	75F

Honda Lock-up (HO-14)

ALTO	ID (in)	OD (in)	OAT	*	Material	Ray	BW	Tri	Sonnax	Abco
T1784K1	8.125	9.125	.045	*	Green	R445540	B45540	NX23-6	N/A	N/A
T1784CF	8.125	9.125	.045	*	Carbon	R445540	B45540	NX23-6	N/A	N/A
T1784CM	8.125	9.125	.045	*	Carbon Matrix	R445540	B45540	NX23-6	N/A	N/A
T1787K1	8.125	9.125	.070	*	Green	R475540	N/A	NX23-6X70	N/A	N/A
T1787CF	8.125	9.125	.070	*	Carbon	R475540	N/A	NX23-6X70	N/A	N/A
T1787CM	8.125	9.125	.070	*	Carbon Matrix	R475540	N/A	NX23-6X70	N/A	N/A

AX4S, AX4N, AXODE, CD4E, JF403, RL4F03A, 4EAT, 4EAT-F, G4A-HL. KM175-5, KM177

ALTO	ID (in)	OD (in)	OAT	*	Material	Ray	BW	Tri	Sonnax	Abco
T1034K1	8.125	9.250	.045		Green	R445120	B45120	FX-23-6	FD-F-4	70
T1034CF	8.125	9.250	.045		Carbon	R445120	B45120	FX-23-6	FD-F-4	70
T1034CM	8.125	9.250	.045		Carbon Matrix	R445120	B45120	FX-23-6	FD-F-4	70
T1037K1	8.125	9.250	.070		Green	R475120	B66120	FX-23-6X70	FD-F-6	75B
T1037CF	8.125	9.250	.070		Carbon	R475120	B66120	FX-23-6X70	FD-F-6	75B
T1037CM	8.125	9.250	.070		Carbon Matrix	R475120	B66120	FX-23-6X70	FD-F-6	75B

A4LD Multi Clutch

ALTO	ID (in)	OD (in)	OAT	*	Material	Ray	BW	Tri	Sonnax	Abco
T1794K1	8.125	9.375	.045		Green	R445100	B45100	FX-23-18	FD-F-10	N/A
T1794CF	8.125	9.375	.045		Carbon	R445100	B45100	FX-23-18	FD-F-10	N/A
T1794CM	8.125	9.375	.045		Carbon Matrix	R445100	B45100	FX-23-18	FD-F-10	N/A
T1797K1	8.125	9.375	.070		Green	R475100	N/A	FX-23-18X70	N/A	N/A
T1797CF	8.125	9.375	.070		Carbon	R475100	N/A	FX-23-18X70	N/A	N/A
T1797CM	8.125	9.375	.070		Carbon Matrix	R475100	N/A	FX-23-18X70	N/A	N/A

AX4S, AX4N, AXODE, CD4E

ALTO	ID (in)	OD (in)	OAT	*	Material	Ray	BW	Tri	Sonnax	Abco
T1374K1	8.125	9.750	.045		Green	R445080	B45080	N/A	N/A	N/A
T1374CF	8.125	9.750	.045		Carbon	R445080	B45080	N/A	N/A	N/A
T1374CM	8.125	9.750	.045		Carbon Matrix	R445080	B45080	N/A	N/A	N/A
T1377K1	8.125	9.750	.070		Green	R475080	B66080	N/A	N/A	N/A
T1377CF	8.125	9.750	.070		Carbon	R475080	B66080	N/A	N/A	N/A
T1377CM	8.125	9.750	.070		Carbon Matrix	R475080	B66080	N/A	N/A	N/A

Torque Converter Rings

Chrysler Various

ALTO	ID (in)	OD (in)	OAT	*	Material	Ray	BW	Tri	Sonnax	Abco
T1804K1	8.125	10.125	.045		Green	N/A	N/A	TX-23-13	N/A	N/A
T1804CF	8.125	10.125	.045		Carbon	N/A	N/A	TX-23-13	N/A	N/A
T1804CM	8.125	10.125	.045		Carbon Matrix	N/A	N/A	TX-23-13	N/A	N/A
T1807K1	8.125	10.125	.070		Green	N/A	N/A	TX-23-13X70	N/A	N/A
T1807CF	8.125	10.125	.070		Carbon	N/A	N/A	TX-23-13X70	N/A	N/A
T1807CM	8.125	10.125	.070		Carbon Matrix	N/A	N/A	TX-23-13X70	N/A	N/A

5HP19 W/ Groove

ALTO	ID (in)	OD (in)	OAT	*	Material	Ray	BW	Tri	Sonnax	Abco
T1814K1G	8.141	9.438	.045	*	Green	N/A	N/A	PX-23-12	N/A	N/A
T1814CFG	8.141	9.438	.045	*	Carbon	N/A	N/A	PX-23-12	N/A	N/A
T1814CMG	8.141	9.438	.045	*	Carbon Matrix	N/A	N/A	PX-23-12	N/A	N/A
T1817K1G	8.141	9.438	.070	*	Green	N/A	N/A	PX-23-12X70	N/A	N/A
T1817CFG	8.141	9.438	.070	*	Carbon	N/A	N/A	PX-23-12X70	N/A	N/A
T1817CMG	8.141	9.438	.070	*	Carbon Matrix	N/A	N/A	PX-23-12X70	N/A	N/A

Hyundai/Kia 6 spd.

ALTO	ID (in)	OD (in)	OAT	*	Material	Ray	BW	Tri	Sonnax	Abco
T2314K1	8.150	9.410	.045		Green	N/A	N/A	N/A	N/A	N/A
T2314CF	8.150	9.410	.045		Carbon	N/A	N/A	N/A	N/A	N/A
T2314CM	8.150	9.410	.045		Carbon Matrix	N/A	N/A	N/A	N/A	N/A
T2317K1	8.150	9.410	.070		Green	N/A	N/A	N/A	N/A	N/A
T2317CF	8.150	9.410	.070		Carbon	N/A	N/A	N/A	N/A	N/A
T2317CM	8.150	9.410	.070		Carbon Matrix	N/A	N/A	N/A	N/A	N/A

GM 245mm, L4N71B

ALTO	ID (in)	OD (in)	OAT	*	Material	Ray	BW	Tri	Sonnax	Abco
T1504K1	8.250	9.000	.045		Green	R445310	B45310	JX-23-3	GM-F-3	66
T1504CF	8.250	9.000	.045		Carbon	R445310	B45310	JX-23-3	GM-F-3	66
T1504CM	8.250	9.000	.045		Carbon Matrix	R445310	B45310	JX-23-3	GM-F-3	66
T1507K1	8.250	9.000	.070		Green	R475310	B66310	JX-23-3X70	GM-F-6	66B
T1507CF	8.250	9.000	.070		Carbon	R475310	B66310	JX-23-3X70	GM-F-6	66B
T1507CM	8.250	9.000	.070		Carbon Matrix	R475310	B66310	JX-23-3X70	GM-F-6	66B

GM 245mm, L4N71B

ALTO	ID (in)	OD (in)	OAT	*	Material	Ray	BW	Tri	Sonnax	Abco
T1014K1	8.250	9.125	.045		Green	N/A	N/A	N/A	N/A	N/A
T1014CF	8.250	9.125	.045		Carbon	N/A	N/A	N/A	N/A	N/A
T1014CM	8.250	9.125	.045		Carbon Matrix	N/A	N/A	N/A	N/A	N/A
T1017K1	8.250	9.125	.070		Green	N/A	N/A	N/A	N/A	N/A
T1017CF	8.250	9.125	.070		Carbon	N/A	N/A	N/A	N/A	N/A
T1017CM	8.250	9.125	.070		Carbon Matrix	N/A	N/A	N/A	N/A	N/A

GM 258mm, 4HP22, 5HP19, CD4E

ALTO	ID (in)	OD (in)	OAT	*	Material	Ray	BW	Tri	Sonnax	Abco
T1524K1	8.250	9.500	.045		Green	R445300	B45300	PX-23-9	FS-F-1	68
T1524CF	8.250	9.500	.045		Carbon	R445300	B45300	PX-23-9	FS-F-1	68
T1524CM	8.250	9.500	.045		Carbon Matrix	R445300	B45300	PX-23-9	FS-F-1	68
T1527K1	8.250	9.500	.070		Green	R475300	B66300	PX-23-9X70	FS-F-2	68C
T1527CF	8.250	9.500	.070		Carbon	R475300	B66300	PX-23-9X70	FS-F-2	68C
T1527CM	8.250	9.500	.070		Carbon Matrix	R475300	B66300	PX-23-9X70	FS-F-2	68C

Torque Converter Rings

A4LD, 4R55E, AXOD, AXODE

ALTO	ID (in)	OD (in)	OAT	*	Material	Ray	BW	Tri	Sonnax	Abco
T1824K1	8.250	9.688	.045	*	Green	R445380	B45380	FX-23-19	FD-F-3	N/A
T1824CF	8.250	9.688	.045	*	Carbon	R445380	B45380	FX-23-19	FD-F-3	N/A
T1824CM	8.250	9.688	.045	*	Carbon Matrix	R445380	B45380	FX-23-19	FD-F-3	N/A
T1827K1	8.250	9.688	.070	*	Green	R475380	N/A	FX-23-19X70	FD-F-5	N/A
T1827CF	8.250	9.688	.070	*	Carbon	R475380	N/A	FX-23-19X70	FD-F-5	N/A
T1827CM	8.250	9.688	.070	*	Carbon Matrix	R475380	N/A	FX-23-19X70	FD-F-5	N/A

Chry 10 LU, 4R55E, A140, 4R55E, A140, 6HP26, AXOD, AXODE 3.8L

ALTO	ID (in)	OD (in)	OAT	*	Material	Ray	BW	Tri	Sonnax	Abco
T1054K1	8.250	9.725	.045		Green	R445070	B45070	YX-23-3	FD-F-3	64
T1054CF	8.250	9.725	.045		Carbon	R445070	B45070	YX-23-3	FD-F-3	64
T1054CM	8.250	9.725	.045		Carbon Matrix	R445070	B45070	YX-23-3	FD-F-3	64
T1057K1	8.250	9.725	.070		Green	R475070	B66070	YX-23-3X70	FD-F-5	64A
T1057CF	8.250	9.725	.070		Carbon	R475070	B66070	YX-23-3X70	FD-F-5	64A
T1057CM	8.250	9.725	.070		Carbon Matrix	R475070	B66070	YX-23-3X70	FD-F-5	64A

A340H, A42, A43, A44, A45DE,DL A4LD, 4R55E Front Cover

ALTO	ID (in)	OD (in)	OAT	*	Material	Ray	BW	Tri	Sonnax	Abco
T1074K1	8.250	10.000	.045		Green	R445040	B45040	YX-23-1	TO-F-1	72
T1074CF	8.250	10.000	.045		Carbon	R445040	B45040	YX-23-1	TO-F-1	72
T1074CM	8.250	10.000	.045		Carbon Matrix	R445040	B45040	YX-23-1	TO-F-1	72
T1077K1	8.250	10.000	.070		Green	R475040	B66040	YX-23-1X70	TO-F-4	N/A
T1077CF	8.250	10.000	.070		Carbon	R475040	B66040	YX-23-1X70	TO-F-4	N/A
T1077CM	8.250	10.000	.070		Carbon Matrix	R475040	B66040	YX-23-1X70	TO-F-4	N/A

A340H

ALTO	ID (in)	OD (in)	OAT	*	Material	Ray	BW	Tri	Sonnax	Abco
T1834K1	8.250	10.125	.045	*	Green	N/A	N/A	YX-23-8	N/A	62
T1834CF	8.250	10.125	.045	*	Carbon	N/A	N/A	YX-23-8	N/A	62
T1834CM	8.250	10.125	.045	*	Carbon Matrix	N/A	N/A	YX-23-8	N/A	62
T1837K1	8.250	10.125	.070	*	Green	N/A	N/A	YX-23-8X70	N/A	62A
T1837CF	8.250	10.125	.070	*	Carbon	N/A	N/A	YX-23-8X70	N/A	62A
T1837CM	8.250	10.125	.070	*	Carbon Matrix	N/A	N/A	YX-23-8X70	N/A	62A

RL3F01A, RL4F02A, RE4R01A

ALTO	ID (in)	OD (in)	OAT	*	Material	Ray	BW	Tri	Sonnax	Abco
T1474K1	8.313	9.250	.045		Green	R445110	B45110	JX-23-20	MZ-F-1	68A
T1474CF	8.313	9.250	.045		Carbon	R445110	B45110	JX-23-20	MZ-F-1	68A
T1474CM	8.313	9.250	.045		Carbon Matrix	R445110	B45110	JX-23-20	MZ-F-1	68A
T1477K1	8.313	9.250	.070		Green	R475110	B66110	JX-23-20X70	MZ-F-2	68B
T1477CF	8.313	9.250	.070		Carbon	R475110	B66110	JX-23-20X70	MZ-F-2	68B
T1477CM	8.313	9.250	.070		Carbon Matrix	R475110	B66100	JX-23-20X70	MZ-F-2	68B

Focus FN, 5HP24

ALTO	ID (in)	OD (in)	OAT	*	Material	Ray	BW	Tri	Sonnax	Abco
T1844K1	8.375	9.375	.045		Green	N/A	N/A	PX-23-11	N/A	N/A
T1844CF	8.375	9.375	.045		Carbon	N/A	N/A	PX-23-11	N/A	N/A
T1844CM	8.375	9.375	.045		Carbon Matrix	N/A	N/A	PX-23-11	N/A	N/A
T1847K1	8.375	9.375	.070		Green	N/A	N/A	PX-23-11X70	N/A	N/A
T1847CF	8.375	9.375	.070		Carbon	N/A	N/A	PX-23-11X70	N/A	N/A
T1847CM	8.375	9.375	.070		Carbon Matrix	N/A	N/A	PX-23-11X70	N/A	N/A

Torque Converter Rings

GM 258mm

ALTO	ID (in)	OD (in)	OAT Material	Ray	BW	Tri	Sonnax	Abco
T1384K1	8.375	9.625	.045 Green	R445290	B45290	N/A	N/A	N/A
T1384CF	8.375	9.625	.045 Carbon	R445290	B45290	N/A	N/A	N/A
T1384CM	8.375	9.625	.045 Carbon Matrix	R445290	B45290	N/A	N/A	N/A
T1387K1	8.375	9.625	.070 Green	R475290	B66290	N/A	N/A	N/A
T1387CF	8.375	9.625	.070 Carbon	R475290	B66290	N/A	N/A	N/A
T1387CM	8.375	9.625	.070 Carbon Matrix	R475290	B66290	N/A	N/A	N/A

Various

ALTO	ID (in)	OD (in)	OAT Material	Ray	BW	Tri	Sonnax	Abco
T1854K1	8.380	9.440	.045 Green	R445690	B45690	N/A	N/A	N/A
T1854CF	8.380	9.440	.045 Carbon	R445690	B45690	N/A	N/A	N/A
T1854CM	8.380	9.440	.045 Carbon Matrix	R445690	B45690	N/A	N/A	N/A

4F27E, FN4A-EL, G4A-EL VW 096, 097, 098 Honda, Sterling

ALTO	ID (in)	OD (in)	OAT Material	Ray	BW	Tri	Sonnax	Abco
T1194K1	8.500	9.500	.045 Green	R445090	B45090	NX-23-2	MZ-F-1	93
T1194CF	8.500	9.500	.045 Carbon	R445090	B45090	NX-23-2	MZ-F-1	93
T1194CM	8.500	9.500	.045 Carbon Matrix	R445090	B45090	NX-23-2	MZ-F-1	93
T1197K1	8.500	9.500	.070 Green	R475090	B66090	NX-23-2X70	MZ-F-2	93A
T1197CF	8.500	9.500	.070 Carbon	R475090	B66090	NX-23-2X70	MZ-F-2	93A
T1197CM	8.500	9.500	.070 Carbon Matrix	R475090	B66090	NX-23-2X70	MZ-F-2	93A

Various

ALTO	ID (in)	OD (in)	OAT Material	Ray	BW	Tri	Sonnax	Abco
T1864K1	8.500	9.938	.045 Green	R445044	B45044	N/A	N/A	N/A
T1864CF	8.500	9.938	.045 Carbon	R445044	B45044	N/A	N/A	N/A
T1864CM	8.500	9.938	.045 Carbon Matrix	R445044	B45044	N/A	N/A	N/A

A440L

ALTO	ID (in)	OD (in)	OAT Material	Ray	BW	Tri	Sonnax	Abco
T1874K1	8.500	10.063	.045 Green	N/A	N/A	YX-23-10	N/A	N/A
T1874CF	8.500	10.063	.045 Carbon	N/A	N/A	YX-23-10	N/A	N/A
T1874CM	8.500	10.063	.045 Carbon Matrix	N/A	N/A	YX-23-10	N/A	N/A
T1877K1	8.500	10.063	.070 Green	N/A	N/A	YX-23-10X70	N/A	N/A
T1877CF	8.500	10.063	.070 Carbon	N/A	N/A	YX-23-10X70	N/A	N/A
T1877CM	8.500	10.063	.070 Carbon Matrix	N/A	N/A	YX-23-10X70	N/A	N/A

6T40

ALTO	ID (in)	OD (in)	OAT Material	Ray	BW	Tri	Sonnax	Abco
T1884K1	8.562	9.813	.045 Green	R445680	B45680	N/A	N/A	N/A
T1884CF	8.562	9.813	.045 Carbon	R445680	B45680	N/A	N/A	N/A
T1884CM	8.562	9.813	.045 Carbon Matrix	R445680	B45680	N/A	N/A	N/A

A440F

ALTO	ID (in)	OD (in)	OAT Material	Ray	BW	Tri	Sonnax	Abco
T1894K1	8.625	10.125	.045 Green	N/A	N/A	YX-23-11	N/A	N/A
T1894CF	8.625	10.125	.045 Carbon	N/A	N/A	YX-23-11	N/A	N/A
T1894CM	8.625	10.125	.045 Carbon Matrix	N/A	N/A	YX-23-11	N/A	N/A
T1897K1	8.625	10.125	.070 Green	N/A	N/A	YX-23-11X70	N/A	N/A
T1897CF	8.625	10.125	.070 Carbon	N/A	N/A	YX-23-11X70	N/A	N/A
T1897CM	8.625	10.125	.070 Carbon Matrix	N/A	N/A	YX-23-11X70	N/A	N/A

Torque Converter Rings

Chry 10 LU, A440F AW55-50SN

ALTO	ID (in)	OD (in)	OAT	*	Material	Ray	BW	Tri	Sonnax	Abco
T1494K1	8.625	10.250	.045		Green	R445280	B45280	N/A	N/A	N/A
T1494CF	8.625	10.250	.045		Carbon	R445280	B45280	N/A	N/A	N/A
T1494CM	8.625	10.250	.045		Carbon Matrix	R445280	B45280	N/A	N/A	N/A
T1497K1	8.625	10.250	.070		Green	R475280	B66280	N/A	N/A	N/A
T1497CF	8.625	10.250	.070		Carbon	R475280	B66280	N/A	N/A	N/A
T1497CM	8.625	10.250	.070		Carbon Matrix	R475280	B66280	N/A	N/A	N/A

A440L

ALTO	ID (in)	OD (in)	OAT	*	Material	Ray	BW	Tri	Sonnax	Abco
T1904K1	8.625	10.375	.045	*	Green	N/A	N/A	YX-23-7	TO-F-6	N/A
T1904CF	8.625	10.375	.045	*	Carbon	N/A	N/A	YX-23-7	TO-F-6	N/A
T1904CM	8.625	10.375	.045	*	Carbon Matrix	N/A	N/A	YX-23-7	TO-F-6	N/A
T1907K1	8.625	10.375	.070	*	Green	N/A	N/A	YX-23-7X70	N/A	N/A
T1907CF	8.625	10.375	.070	*	Carbon	N/A	N/A	YX-23-7X70	N/A	N/A
T1907CM	8.625	10.375	.070	*	Carbon Matrix	N/A	N/A	YX-23-7X70	N/A	N/A

BTR

ALTO	ID (in)	OD (in)	OAT	*	Material	Ray	BW	Tri	Sonnax	Abco
T1414K1	8.625	10.500	.045		Green	R445030	B45030	FX-23-13	FD-F-8	N/A
T1414CF	8.625	10.500	.045		Carbon	R445030	B45030	FX-23-13	FD-F-8	N/A
T1414CM	8.625	10.500	.045		Carbon Matrix	R445030	B45030	FX-23-13	FD-F-8	N/A
T1417K1	8.625	10.500	.070		Green	R475030	B66030	FX-23-13X70	N/A	N/A
T1417CF	8.625	10.500	.070		Carbon	R475030	B66030	FX-23-13X70	N/A	N/A
T1417CM	8.625	10.500	.070		Carbon Matrix	R475030	B66030	FX-23-13X70	N/A	N/A

Various

ALTO	ID (in)	OD (in)	OAT	*	Material	Ray	BW	Tri	Sonnax	Abco
T1914K1	8.625	10.750	.045	*	Green	R445030	B45030	N/A	N/A	N/A
T1914CF	8.625	10.750	.045	*	Carbon	R445030	B45030	N/A	N/A	N/A
T1914CM	8.625	10.750	.045	*	Carbon Matrix	R445030	B45030	N/A	N/A	N/A

G4A, 4EAT, G4A-EL Late

ALTO	ID (in)	OD (in)	OAT	*	Material	Ray	BW	Tri	Sonnax	Abco
T1924K1	8.688	9.500	.045	*	Green	N/A	N/A	JX-23-15	JA-F-1	86B
T1924CF	8.688	9.500	.045	*	Carbon	N/A	N/A	JX-23-15	JA-F-1	86B
T1924CM	8.688	9.500	.045	*	Carbon Matrix	N/A	N/A	JX-23-15	JA-F-1	86B
T1927K1	8.688	9.500	.070	*	Green	N/A	N/A	JX-23-15X70	JA-F-3	86C
T1927CF	8.688	9.500	.070	*	Carbon	N/A	N/A	JX-23-15X70	JA-F-3	86C
T1927CM	8.688	9.500	.070	*	Carbon Matrix	N/A	N/A	JX-23-15X70	JA-F-3	86C

JF506E, RE4F04A/V RE4R01A, 5HP19, KM175-176

ALTO	ID (in)	OD (in)	OAT	*	Material	Ray	BW	Tri	Sonnax	Abco
T1064K1	8.750	9.857	.045		Green	R445050	B45050	JX-23-22	NI-F-3	79,95
T1064CF	8.750	9.857	.045		Carbon	R445050	B45050	JX-23-22	NI-F-3	79,95
T1064CM	8.750	9.857	.045		Carbon Matrix	R445050	B45050	JX-23-22	NI-F-3	79,95
T1067K1	8.750	9.857	.070		Green	R475050	B66050	JX-23-22X70	NI-F-4	79A,95A
T1067CF	8.750	9.857	.070		Carbon	R475050	B66050	JX-23-22X70	NI-F-4	79A,95A
T1067CM	8.750	9.857	.070		Carbon Matrix	R475050	B66050	JX-23-22X70	NI-F-4	79A,95A

Torque Converter Rings

41TE, 42LE 10 B7TA, B7VA, B7YA

ALTO	ID (in)	OD (in)	OAT	*	Material	Ray	BW	Tri	Sonnax	Abco
T1354K1	8.750	10.000	.045		Green	R445200	B45200	TX-23-17	N/A	N/A
T1354CF	8.750	10.000	.045		Carbon	R445200	B45200	TX-23-17	N/A	N/A
T1354CM	8.750	10.000	.045		Carbon Matrix	R445200	B45200	TX-23-17	N/A	N/A
T1357K1	8.750	10.000	.070		Green	R475200	B66200	TX-23-17X70	N/A	N/A
T1357CF	8.750	10.000	.070		Carbon	R475200	B66200	TX-23-17X70	N/A	N/A
T1357CM	8.750	10.000	.070		Carbon Matrix	R475200	B66200	TX-23-17X70	N/A	N/A

Chrysler 9-1/2 LU

ALTO	ID (in)	OD (in)	OAT	*	Material	Ray	BW	Tri	Sonnax	Abco
T1087K1	8.750	10.250	.070		Green	N/A	N/A	N/A	N/A	N/A
T1087CF	8.750	10.250	.070		Carbon	N/A	N/A	N/A	N/A	N/A
T1087CM	8.750	10.250	.070		Carbon Matrix	N/A	N/A	N/A	N/A	N/A

Chrysler 10 LU

ALTO	ID (in)	OD (in)	OAT	*	Material	Ray	BW	Tri	Sonnax	Abco
T1934K1	8.750	10.313	.045	*	Green	N/A	N/A	TX-23-11	CH-F-12	N/A
T1934CF	8.750	10.313	.045	*	Carbon	N/A	N/A	TX-23-11	CH-F-12	N/A
T1934CM	8.750	10.313	.045	*	Carbon Matrix	N/A	N/A	TX-23-11	CH-F-12	N/A
T1937K1	8.750	10.313	.070	*	Green	N/A	N/A	TX-23-11X70	CH-F-13	N/A
T1937CF	8.750	10.313	.070	*	Carbon	N/A	N/A	TX-23-11X70	CH-F-13	N/A
T1937CM	8.750	10.313	.070	*	Carbon Matrix	N/A	N/A	TX-23-11X70	CH-F-13	N/A

Chry 10 LU - Floater

ALTO	ID (in)	OD (in)	OAT	*	Material	Ray	BW	Tri	Sonnax	Abco
T1427K1X	8.800	10.300	.070	*	Green	R460000	N/A	TX-26-11X70	N/A	98-A
T1427CFX	8.800	10.300	.070	*	Carbon	R460000	N/A	TX-26-11X70	N/A	98-A
T1427CMX	8.800	10.300	.070	*	Carbon Matrix	R460000	N/A	TX-26-11X70	N/A	98-A

RE4F04A/V

ALTO	ID (in)	OD (in)	OAT	*	Material	Ray	BW	Tri	Sonnax	Abco
T1944K1	8.813	9.813	.045	*	Green	N/A	N/A	JX-23-32	JA-F-7	N/A
T1944CF	8.813	9.813	.045	*	Carbon	N/A	N/A	JX-23-32	JA-F-7	N/A
T1944CM	8.813	9.813	.045	*	Carbon Matrix	N/A	N/A	JX-23-32	JA-F-7	N/A
T1947K1	8.813	9.813	.070	*	Green	N/A	N/A	JX-23-32X70	JA-F-8	N/A
T1947CF	8.813	9.813	.070	*	Carbon	N/A	N/A	JX-23-32X70	JA-F-8	N/A
T1947CM	8.813	9.813	.070	*	Carbon Matrix	N/A	N/A	JX-23-32X70	JA-F-8	N/A

B7TA, B7VA, B7YA

ALTO	ID (in)	OD (in)	OAT	*	Material	Ray	BW	Tri	Sonnax	Abco
T1954K1	8.875	9.938	.045	*	Green	R445450	B45450	N/A	N/A	N/A
T1954CF	8.875	9.938	.045	*	Carbon	R445450	B45450	N/A	N/A	N/A
T1954CM	8.875	9.938	.045	*	Carbon Matrix	R445450	B45450	N/A	N/A	N/A
T1957K1	8.875	9.938	.070	*	Green	R475450	B66450	N/A	N/A	N/A
T1957CF	8.875	9.938	.070	*	Carbon	R475450	B66450	N/A	N/A	N/A
T1957CM	8.875	9.938	.070	*	Carbon Matrix	R475450	B66450	N/A	N/A	N/A

4HP24

ALTO	ID (in)	OD (in)	OAT	*	Material	Ray	BW	Tri	Sonnax	Abco
T1964K1	8.938	9.938	.045	*	Green	R445064	B45064	N/A	N/A	N/A
T1964CF	8.938	9.938	.045	*	Carbon	R445064	B45064	N/A	N/A	N/A
T1964CM	8.938	9.938	.045	*	Carbon Matrix	R445064	B45064	N/A	N/A	N/A

Torque Converter Rings

RL4F02A

ALTO	ID (in)	OD (in)	OAT	*	Material	Ray	BW	Tri	Sonnax	Abco
T1304K1	9.000	9.750	.045		Green	R445060	B45060	N/A	N/A	N/A
T1304CF	9.000	9.750	.045		Carbon	R445060	B45060	N/A	N/A	N/A
T1304CM	9.000	9.750	.045		Carbon Matrix	R445060	B45060	N/A	N/A	N/A
T1307K1	9.000	9.750	.070		Green	R475060	B66060	N/A	N/A	N/A
T1307CF	9.000	9.750	.070		Carbon	R475060	B66060	N/A	N/A	N/A
T1307CM	9.000	9.750	.070		Carbon Matrix	R475060	B66060	N/A	N/A	N/A

4HP22, A999, RL4F02A

ALTO	ID (in)	OD (in)	OAT	*	Material	Ray	BW	Tri	Sonnax	Abco
T1974K1	9.000	9.875	.045	*	Green	N/A	N/A	JX-23-10	NI-F-1	67
T1974CF	9.000	9.875	.045	*	Carbon	N/A	N/A	JX-23-10	NI-F-1	67
T1974CM	9.000	9.875	.045	*	Carbon Matrix	N/A	N/A	JX-23-10	NI-F-1	67
T1977K1	9.000	9.875	.070	*	Green	N/A	N/A	JX-23-10X70	NI-F-2	67C
T1977CF	9.000	9.875	.070	*	Carbon	N/A	N/A	JX-23-10X70	NI-F-2	67C
T1977CM	9.000	9.875	.070	*	Carbon Matrix	N/A	N/A	JX-23-10X70	NI-F-2	67C

Various

ALTO	ID (in)	OD (in)	OAT	*	Material	Ray	BW	Tri	Sonnax	Abco
T1284K1	9.000	10.000	.045		Green	R445370	B45370	N/A	N/A	N/A
T1284CF	9.000	10.000	.045		Carbon	R445370	B45370	N/A	N/A	N/A
T1284CM	9.000	10.000	.045		Carbon Matrix	R445370	B45370	N/A	N/A	N/A
T1287K1	9.000	10.000	.070		Green	R475370	B66370	N/A	N/A	N/A
T1287CF	9.000	10.000	.070		Carbon	R475370	B66370	N/A	N/A	N/A
T1287CM	9.000	10.000	.070		Carbon Matrix	R475370	B66370	N/A	N/A	N/A

A440L, A442F, U140E

ALTO	ID (in)	OD (in)	OAT	*	Material	Ray	BW	Tri	Sonnax	Abco
T1984K1	9.000	10.500	.045	*	Green	R445260	B45260	N/A	N/A	N/A
T1984CF	9.000	10.500	.045	*	Carbon	R445260	B45260	N/A	N/A	N/A
T1984CM	9.000	10.500	.045	*	Carbon Matrix	R445260	B45260	N/A	N/A	N/A
T1987K1	9.000	10.500	.070	*	Green	R475260	B66260	N/A	N/A	N/A
T1987CF	9.000	10.500	.070	*	Carbon	R475260	B66260	N/A	N/A	N/A
T1987CM	9.000	10.500	.070	*	Carbon Matrix	R475260	B66260	N/A	N/A	N/A

Chrysler 10-3/4 LU

ALTO	ID (in)	OD (in)	OAT	*	Material	Ray	BW	Tri	Sonnax	Abco
T1994K1	9.000	10.750	.045		Green	N/A	N/A	TX-23-14	CH-F-14	N/A
T1994CF	9.000	10.750	.045		Carbon	N/A	N/A	TX-23-14	CH-F-14	N/A
T1994CM	9.000	10.750	.045		Carbon Matrix	N/A	N/A	TX-23-14	CH-F-14	N/A
T1997K1	9.000	10.750	.070		Green	N/A	N/A	TX-23-14X70	CH-F-15	N/A
T1997CF	9.000	10.750	.070		Carbon	N/A	N/A	TX-23-14X70	CH-F-15	N/A
T1997CM	9.000	10.750	.070		Carbon Matrix	N/A	N/A	TX-23-14X70	CH-F-15	N/A

Various

ALTO	ID (in)	OD (in)	OAT	*	Material	Ray	BW	Tri	Sonnax	Abco
T2004K1	9.060	9.813	.045	*	Green	R445340	B45340	N/A	N/A	N/A
T2004CF	9.060	9.813	.045	*	Carbon	R445340	B45340	N/A	N/A	N/A
T2004CM	9.060	9.813	.045	*	Carbon Matrix	R445340	B45340	N/A	N/A	N/A

Torque Converter Rings

Honda G4, Acura Legend

ALTO	ID (in)	OD (in)	OAT	*	Material	Ray	BW	Tri	Sonnax	Abco
T1324K1	9.125	10.125	.045		Green	R445330	B45330	NX-23-5	HO-F-3	N/A
T1324CF	9.125	10.125	.045		Carbon	R445330	B45330	NX-23-5	HO-F-3	N/A
T1324CM	9.125	10.125	.045		Carbon Matrix	R445330	B45330	NX-23-5	HO-F-3	N/A
T1327K1	9.125	10.125	.070		Green	R475330	B66330	NX-23-5X70	HO-F-4	N/A
T1327CF	9.125	10.125	.070		Carbon	R475330	B66330	NX-23-5X70	HO-F-4	N/A
T1327CM	9.125	10.125	.070		Carbon Matrix	R475330	B66330	NX-23-5X70	HO-F-4	N/A

Chrysler 10-3/4 LU

ALTO	ID (in)	OD (in)	OAT	*	Material	Ray	BW	Tri	Sonnax	Abco
T2014K1	9.125	10.500	.045	*	Green	N/A	N/A	TX-23X	N/A	N/A
T2014CF	9.125	10.500	.045	*	Carbon	N/A	N/A	TX-23X	N/A	N/A
T2014CM	9.125	10.500	.045	*	Carbon Matrix	N/A	N/A	TX-23X	N/A	N/A
T2017K1	9.125	10.500	.070	*	Green	N/A	N/A	TX-23X70	N/A	N/A
T2017CF	9.125	10.500	.070	*	Carbon	N/A	N/A	TX-23X70	N/A	N/A
T2017CM	9.125	10.500	.070	*	Carbon Matrix	N/A	N/A	TX-23X70	N/A	N/A

RE4R03A

ALTO	ID (in)	OD (in)	OAT	*	Material	Ray	BW	Tri	Sonnax	Abco
T1094K1	9.125	10.563	.045		Green	N/A	N/A	TX-22X	CH-F-1	55B
T1094CF	9.125	10.563	.045		Carbon	N/A	N/A	TX-22X	CH-F-1	55B
T1094CM	9.125	10.563	.045		Carbon Matrix	N/A	N/A	TX-22X	CH-F-1	55B
T1097K1	9.125	10.563	.070		Green	N/A	N/A	TX-22X70	CH-F-2	55A
T1097CF	9.125	10.563	.070		Carbon	N/A	N/A	TX-22X70	CH-F-2	55A
T1097CM	9.125	10.563	.070		Carbon Matrix	N/A	N/A	TX-22X70	CH-F-2	55A

Chry 10-3/4

ALTO	ID (in)	OD (in)	OAT	*	Material	Ray	BW	Tri	Sonnax	Abco
T1434K1	9.125	10.750	.045		Green	R445180	B45180	N/A	N/A	N/A
T1434CF	9.125	10.750	.045		Carbon	R445180	B45180	N/A	N/A	N/A
T1434CM	9.125	10.750	.045		Carbon Matrix	R445180	B45180	N/A	N/A	N/A
T1437K1	9.125	10.750	.070		Green	R475180	B66180	N/A	N/A	N/A
T1437CF	9.125	10.750	.070		Carbon	R475180	B66180	N/A	N/A	N/A
T1437CM	9.125	10.750	.070		Carbon Matrix	R475180	B66180	N/A	N/A	N/A

45RFE, 545RFE, A518

ALTO	ID (in)	OD (in)	OAT	*	Material	Ray	BW	Tri	Sonnax	Abco
T2024K1	9.170	10.495	.045	*	Green	R445500	N/A	TX-23-19	N/A	N/A
T2024CF	9.170	10.495	.045	*	Carbon	R445500	N/A	TX-23-19	N/A	N/A
T2024CM	9.170	10.495	.045	*	Carbon Matrix	R445500	N/A	TX-23-19	N/A	N/A
T2027K1	9.170	10.495	.070	*	Green	R475500	B66500	TX-23-19X70	CH-F-20	N/A
T2027CF	9.170	10.495	.070	*	Carbon	R475500	B66500	TX-23-19X70	CH-F-20	N/A
T2027CM	9.170	10.495	.070	*	Carbon Matrix	R475500	B66500	TX-23-19X70	CH-F-20	N/A

Various

ALTO	ID (in)	OD (in)	OAT	*	Material	Ray	BW	Tri	Sonnax	Abco
T1277K1	9.185	10.780	.070		Green	R450000	N/A	N/A	N/A	N/A
T1277CF	9.185	10.780	.070		Carbon	R450000	N/A	N/A	N/A	N/A
T1277CM	9.185	10.780	.070		Carbon Matrix	R450000	N/A	N/A	N/A	N/A

Torque Converter Rings

AODE W/ Modulated Groove

ALTO	ID (in)	OD (in)	OAT	*	Material	Ray	BW	Tri	Sonnax	Abco
T1174K1G	9.250	10.500	.045		Green	N/A	N/A	N/A	N/A	N/A
T1174CFG	9.250	10.500	.045		Carbon	N/A	N/A	N/A	N/A	N/A
T1174CMG	9.250	10.500	.045		Carbon Matrix	N/A	N/A	N/A	N/A	N/A
T1177K1G	9.250	10.500	.070		Green	N/A	N/A	N/A	N/A	N/A
T1177CFG	9.250	10.500	.070		Carbon	N/A	N/A	N/A	N/A	N/A
T1177CMG	9.250	10.500	.070		Carbon Matrix	N/A	N/A	N/A	N/A	N/A

Chry 10-3/4, RE4R03A

ALTO	ID (in)	OD (in)	OAT	*	Material	Ray	BW	Tri	Sonnax	Abco
T1264K1	9.250	10.563	.045		Green	R445190	B45190	N/A	N/A	N/A
T1264CF	9.250	10.563	.045		Carbon	R445190	B45190	N/A	N/A	N/A
T1264CM	9.250	10.563	.045		Carbon Matrix	R445190	B45190	N/A	N/A	N/A
T1267K1	9.250	10.563	.070		Green	R475190	B66190	N/A	N/A	N/A
T1267CF	9.250	10.563	.070		Carbon	R475190	B66190	N/A	N/A	N/A
T1267CM	9.250	10.563	.070		Carbon Matrix	R475190	B66190	N/A	N/A	N/A

Chrysler 10-3/4 LU

ALTO	ID (in)	OD (in)	OAT	*	Material	Ray	BW	Tri	Sonnax	Abco
T2034K1	9.250	10.750	.045	*	Green	N/A	N/A	TX-23-4	N/A	N/A
T2034CF	9.250	10.750	.045	*	Carbon	N/A	N/A	TX-23-4	N/A	N/A
T2034CM	9.250	10.750	.045	*	Carbon Matrix	N/A	N/A	TX-23-4	N/A	N/A
T2037K1	9.250	10.750	.070	*	Green	N/A	N/A	TX-23-4X70	N/A	N/A
T2037CF	9.250	10.750	.070	*	Carbon	N/A	N/A	TX-23-4X70	N/A	N/A
T2037CM	9.250	10.750	.070	*	Carbon Matrix	N/A	N/A	TX-23-4X70	N/A	N/A

AODE W/ Modulated Groove

ALTO	ID (in)	OD (in)	OAT	*	Material	Ray	BW	Tri	Sonnax	Abco
T2044K1G	9.313	10.563	.045	*	Green	N/A	N/A	FX-23-26M	FD-F-14	N/A
T2044CFG	9.313	10.563	.045	*	Carbon	N/A	N/A	FX-23-26M	FD-F-14	N/A
T2044CMG	9.313	10.563	.045	*	Carbon Matrix	N/A	N/A	FX-23-26M	FD-F-14	N/A
T2047K1G	9.313	10.563	.070	*	Green	N/A	N/A	FX-23-26MX70	N/A	N/A
T2047CFG	9.313	10.563	.070	*	Carbon	N/A	N/A	FX-23-26MX70	N/A	N/A
T2047CMG	9.313	10.563	.070	*	Carbon Matrix	N/A	N/A	FX-23-26MX70	N/A	N/A

MPYA, 5HP30

ALTO	ID (in)	OD (in)	OAT	*	Material	Ray	BW	Tri	Sonnax	Abco
T1334K1	9.350	10.135	.045		Green	R445330	B45330	PX-23-10	N/A	N/A
T1334CF	9.350	10.135	.045		Carbon	R445330	B45330	PX-23-10	N/A	N/A
T1334CM	9.350	10.135	.045		Carbon Matrix	R445330	B45330	PX-23-10	N/A	N/A
T1337K1	9.350	10.135	.070		Green	R475330	B66330	PX-23-10X70	N/A	N/A
T1337CF	9.350	10.135	.070		Carbon	R475330	B66330	PX-23-10X70	N/A	N/A
T1337CM	9.350	10.135	.070		Carbon Matrix	R475330	B66330	PX-23-10X70	N/A	N/A

Various

ALTO	ID (in)	OD (in)	OAT	*	Material	Ray	BW	Tri	Sonnax	Abco
T2054K1	9.375	10.250	.045		Green	N/A	N/A	N/A	RE-F-1	N/A
T2054CF	9.375	10.250	.045		Carbon	N/A	N/A	N/A	RE-F-1	N/A
T2054CM	9.375	10.250	.045		Carbon Matrix	N/A	N/A	N/A	RE-F-1	N/A

Torque Converter Rings

GM 265mm

ALTO	ID (in)	OD (in)	OAT	*	Material	Ray	BW	Tri	Sonnax	Abco
T1294K1	9.375	10.375	.045		Green	R445270	B45270	SX-23-32	GM-F-9	N/A
T1294CF	9.375	10.375	.045		Carbon	R445270	B45270	SX-23-32	GM-F-9	N/A
T1294CM	9.375	10.375	.045		Carbon Matrix	R445270	B45270	SX-23-32	GM-F-9	N/A
T1297K1	9.375	10.375	.070		Green	R475270	B66270	SX-23-32X70	GM-F-11	N/A
T1297CF	9.375	10.375	.070		Carbon	R475270	B66270	SX-23-32X70	GM-F-11	N/A
T1297CM	9.375	10.375	.070		Carbon Matrix	R475270	B66270	SX-23-32X70	GM-F-11	N/A

4R100, 5R110W, JR403E, RE4R03A

ALTO	ID (in)	OD (in)	OAT	*	Material	Ray	BW	Tri	Sonnax	Abco
T1344K1	9.500	10.750	.045		Green	R445020	B45020	JX-23-23	JA-F-5	80
T1344CF	9.500	10.750	.045		Carbon	R445020	B45020	JX-23-23	JA-F-5	80
T1344CM	9.500	10.750	.045		Carbon Matrix	R445020	B45020	JX-23-23	JA-F-5	80
T1347K1	9.500	10.750	.070		Green	R475020	B66020	JX-23-23X70	JA-F-6	80A
T1347CF	9.500	10.750	.070		Carbon	R475020	B66020	JX-23-23X70	JA-F-6	80A
T1347CM	9.500	10.750	.070		Carbon Matrix	R475020	B66020	JX-23-23X70	JA-F-6	80A

Various

ALTO	ID (in)	OD (in)	OAT	*	Material	Ray	BW	Tri	Sonnax	Abco
T1214K1	9.500	11.250	.045	*	Green	N/A	N/A	N/A	N/A	N/A
T1214CF	9.500	11.250	.045	*	Carbon	N/A	N/A	N/A	N/A	N/A
T1214CM	9.500	11.250	.045	*	Carbon Matrix	N/A	N/A	N/A	N/A	N/A

450-43LE

ALTO	ID (in)	OD (in)	OAT	*	Material	Ray	BW	Tri	Sonnax	Abco
T2064K1	9.560	11.000	.045	*	Green	R445440	B45440	N/A	N/A	N/A
T2064CF	9.560	11.000	.045	*	Carbon	R445440	B45440	N/A	N/A	N/A
T2064CM	9.560	11.000	.045	*	Carbon Matrix	R445440	B45440	N/A	N/A	N/A
T2067K1	9.560	11.000	.070	*	Green	R475440	B66440	N/A	N/A	N/A
T2067CF	9.560	11.000	.070	*	Carbon	R475440	B66440	N/A	N/A	N/A
T2067CM	9.560	11.000	.070	*	Carbon Matrix	R475440	B66440	N/A	N/A	N/A

Various

ALTO	ID (in)	OD (in)	OAT	*	Material	Ray	BW	Tri	Sonnax	Abco
T2074K1	9.700	11.250	.045	*	Green	R445410	B45410	N/A	N/A	N/A
T2074CF	9.700	11.250	.045	*	Carbon	R445410	B45410	N/A	N/A	N/A
T2074CM	9.700	11.250	.045	*	Carbon Matrix	R445410	B45410	N/A	N/A	N/A

4R100, Drive Ring

ALTO	ID (in)	OD (in)	OAT	*	Material	Ray	BW	Tri	Sonnax	Abco
T2084K1	9.813	10.844	.045	*	Green	N/A	N/A	FX-23-49	N/A	N/A
T2084CF	9.813	10.844	.045	*	Carbon	N/A	N/A	FX-23-49	N/A	N/A
T2084CM	9.813	10.844	.045	*	Carbon Matrix	N/A	N/A	FX-23-49	N/A	N/A
T2087K1	9.813	10.844	.070	*	Green	N/A	N/A	FX-23-49X70	N/A	N/A
T2087CF	9.813	10.844	.070	*	Carbon	N/A	N/A	FX-23-49X70	N/A	N/A
T2087CM	9.813	10.844	.070	*	Carbon Matrix	N/A	N/A	FX-23-49X70	N/A	N/A

4R100, 5R110W

ALTO	ID (in)	OD (in)	OAT	*	Material	Ray	BW	Tri	Sonnax	Abco
T2094K1	9.813	11.125	.045	*	Green	N/A	N/A	FX-23-52	N/A	N/A
T2094CF	9.813	11.125	.045	*	Carbon	N/A	N/A	FX-23-52	N/A	N/A
T2094CM	9.813	11.125	.045	*	Carbon Matrix	N/A	N/A	FX-23-52	N/A	N/A
T2097K1	9.813	11.125	.070	*	Green	N/A	N/A	FX-23-52X70	N/A	N/A
T2097CF	9.813	11.125	.070	*	Carbon	N/A	N/A	FX-23-52X70	N/A	N/A
T2097CM	9.813	11.125	.070	*	Carbon Matrix	N/A	N/A	FX-23-52X70	N/A	N/A

Torque Converter Rings

GM Various

ALTO	ID (in)	OD (in)	OAT	*	Material	Ray	BW	Tri	Sonnax	Abco
T2104K1	9.906	12.344	.045	*	Green	N/A	N/A	SX-23-40	N/A	N/A
T2104CF	9.906	12.344	.045	*	Carbon	N/A	N/A	SX-23-40	N/A	N/A
T2104CM	9.906	12.344	.045	*	Carbon Matrix	N/A	N/A	SX-23-40	N/A	N/A
T2107K1	9.906	12.344	.070	*	Green	N/A	N/A	SX-23-40X70	N/A	N/A
T2107CF	9.906	12.344	.070	*	Carbon	N/A	N/A	SX-23-40X70	N/A	N/A
T2107CM	9.906	12.344	.070	*	Carbon Matrix	N/A	N/A	SX-23-40X70	N/A	N/A

GM 298mm, 300mm

ALTO	ID (in)	OD (in)	OAT	*	Material	Ray	BW	Tri	Sonnax	Abco
T1104K1	10.000	11.125	.045		Green	R445250	B45250	SX-23-4	GM-F-1	90A
T1104CF	10.000	11.125	.045		Carbon	R445250	B45250	SX-23-4	GM-F-1	90A
T1104CM	10.000	11.125	.045		Carbon Matrix	R445250	B45250	SX-23-4	GM-F-1	90A
T1107K1	10.000	11.125	.070		Green	R475250	B66250	SX-23-4	GM-F-1	56C
T1107CF	10.000	11.125	.070		Carbon	R475250	B66250	SX-23-4	GM-F-1	56C
T1107CM	10.000	11.125	.070		Carbon Matrix	R475250	B66250	SX-23-4	GM-F-1	56C

AODE, 4R70W W/O Modulated Groove

ALTO	ID (in)	OD (in)	OAT	*	Material	Ray	BW	Tri	Sonnax	Abco
T1184K1	10.000	11.250	.045		Green	R445551	B45551	FX-23-28M	N/A	N/A
T1184CF	10.000	11.250	.045		Carbon	R445551	B45551	FX-23-28M	N/A	N/A
T1184CM	10.000	11.250	.045		Carbon Matrix	R445551	B45551	FX-23-28M	N/A	N/A
T1187K1	10.000	11.250	.070		Green	R475551	B66551	SX-23-4	GM-F-1	78D
T1187CF	10.000	11.250	.070		Carbon	R475551	B66551	SX-23-4	GM-F-1	78D
T1187CM	10.000	11.250	.070		Carbon Matrix	R475551	B66551	SX-23-4	GM-F-1	78D

AODE, 4R70W W/ Modulated Groove

ALTO	ID (in)	OD (in)	OAT	*	Material	Ray	BW	Tri	Sonnax	Abco
T1184K1G	10.000	11.250	.045		Green	R445551	B45551	FX-23-28M	N/A	N/A
T1184CFG	10.000	11.250	.045		Carbon	R445551	B45551	FX-23-28M	N/A	N/A
T1184CMG	10.000	11.250	.045		Carbon Matrix	R445551	B45551	FX-23-28M	N/A	N/A
T1187K1G	10.000	11.250	.070		Green	R475551	B66551	SX-23-4	GM-F-1	78D
T1187CFG	10.000	11.250	.070		Carbon	R475551	B66551	SX-23-4	GM-F-1	78D
T1187CMG	10.000	11.250	.070		Carbon Matrix	R475551	B66551	SX-23-4	GM-F-1	78D

E4OD, 1st Type

ALTO	ID (in)	OD (in)	OAT	*	Material	Ray	BW	Tri	Sonnax	Abco
T2114K1	10.000	11.375	.045	*	Green	N/A	N/A	FX-23-27	N/A	90A
T2114CF	10.000	11.375	.045	*	Carbon	N/A	N/A	FX-23-27	N/A	90A
T2114CM	10.000	11.375	.045	*	Carbon Matrix	N/A	N/A	FX-23-27	N/A	90A
T2117K1	10.000	11.375	.070	*	Green	N/A	N/A	FX-23-27X70	N/A	90C
T2117CF	10.000	11.375	.070	*	Carbon	N/A	N/A	FX-23-27X70	N/A	90C
T2117CM	10.000	11.375	.070	*	Carbon Matrix	N/A	N/A	FX-23-27X70	N/A	90C

E4OD

ALTO	ID (in)	OD (in)	OAT	*	Material	Ray	BW	Tri	Sonnax	Abco
T1164K1	10.000	11.500	.045		Green	R445010	B45010	FX-23-10	N/A	N/A
T1164CF	10.000	11.500	.045		Carbon	R445010	B45010	FX-23-10	N/A	N/A
T1164CM	10.000	11.500	.045		Carbon Matrix	R445010	B45010	FX-23-10	N/A	N/A
T1167K1	10.000	11.500	.070		Green	R475010	B66010	FX-23-10X70	FD-F-12	N/A
T1167CF	10.000	11.500	.070		Carbon	R475010	B66010	FX-23-10X70	FD-F-12	N/A
T1167CM	10.000	11.500	.070		Carbon Matrix	R475010	B66010	FX-23-10X70	FD-F-12	N/A

Torque Converter Rings

MD/B 300/B 400

ALTO	ID (in)	OD (in)	OAT	*	Material	Ray	BW	Tri	Sonnax	Abco
T2124K1	10.000	11.570	.045	*	Green	R445400	B45400	N/A	N/A	N/A
T2124CF	10.000	11.570	.045	*	Carbon	R445400	B45400	N/A	N/A	N/A
T2124CM	10.000	11.570	.045	*	Carbon Matrix	R445400	B45400	N/A	N/A	N/A
T2127K1	10.000	11.570	.070	*	Green	R475400	B66400	N/A	N/A	N/A
T2127CF	10.000	11.570	.070	*	Carbon	R475400	B66400	N/A	N/A	N/A
T2127CM	10.000	11.570	.070	*	Carbon Matrix	R475400	B66400	N/A	N/A	N/A

E4OD, 1st Type

ALTO	ID (in)	OD (in)	OAT	*	Material	Ray	BW	Tri	Sonnax	Abco
T2134K1	10.000	11.625	.045		Green	N/A	N/A	FX-23-12	N/A	N/A
T2134CF	10.000	11.625	.045		Carbon	N/A	N/A	FX-23-12	N/A	N/A
T2134CM	10.000	11.625	.045		Carbon Matrix	N/A	N/A	FX-23-12	N/A	N/A
T2137K1	10.000	11.625	.070		Green	N/A	N/A	FX-23-12X70	N/A	N/A
T2137CF	10.000	11.625	.070		Carbon	N/A	N/A	FX-23-12X70	N/A	N/A
T2137CM	10.000	11.625	.070		Carbon Matrix	N/A	N/A	FX-23-12X70	N/A	N/A

Allison 3060 (with 9 holes)

ALTO	ID (in)	OD (in)	OAT	*	Material	Ray	BW	Tri	Sonnax	Abco
T2144K1	10.000	11.688	.045	*	Green	N/A	N/A	MX-23-1	MI-F-3060K	N/A
T2144CF	10.000	11.688	.045	*	Carbon	N/A	N/A	MX-23-1	MI-F-3060K	N/A
T2144CM	10.000	11.688	.045	*	Carbon Matrix	N/A	N/A	MX-23-1	MI-F-3060K	N/A
T2147K1	10.000	11.688	.070	*	Green	N/A	N/A	MX-23-1X70	N/A	N/A
T2147CF	10.000	11.688	.070	*	Carbon	N/A	N/A	MX-23-1X70	N/A	N/A
T2147CM	10.000	11.688	.070	*	Carbon Matrix	N/A	N/A	MX-23-1X70	N/A	N/A

Various

ALTO	ID (in)	OD (in)	OAT	*	Material	Ray	BW	Tri	Sonnax	Abco
T2154K1	10.000	11.735	.045	*	Green	R445611	N/A	N/A	N/A	N/A
T2154CF	10.000	11.735	.045	*	Carbon	R445611	N/A	N/A	N/A	N/A
T2154CM	10.000	11.735	.045	*	Carbon Matrix	R445611	N/A	N/A	N/A	N/A

Various

ALTO	ID (in)	OD (in)	OAT	*	Material	Ray	BW	Tri	Sonnax	Abco
T1224K1	10.125	12.250	.045		Green	N/A	N/A	N/A	N/A	N/A
T1224CF	10.125	12.250	.045		Carbon	N/A	N/A	N/A	N/A	N/A
T1224CM	10.125	12.250	.045		Carbon Matrix	N/A	N/A	N/A	N/A	N/A

Various

ALTO	ID (in)	OD (in)	OAT	*	Material	Ray	BW	Tri	Sonnax	Abco
T2164K1	10.200	11.800	.045	*	Green	R445510	B45510	N/A	N/A	N/A
T2164CF	10.200	11.800	.045	*	Carbon	R445510	B45510	N/A	N/A	N/A
T2164CM	10.200	11.800	.045	*	Carbon Matrix	R445510	B45510	N/A	N/A	N/A
T2167K1	10.200	11.800	.070	*	Green	R475510	B66510	N/A	N/A	N/A
T2167CF	10.200	11.800	.070	*	Carbon	R475510	B66510	N/A	N/A	N/A
T2167CM	10.200	11.800	.070	*	Carbon Matrix	R475510	B66510	N/A	N/A	N/A

4L80E

ALTO	ID (in)	OD (in)	OAT	*	Material	Ray	BW	Tri	Sonnax	Abco
T1124K1	10.250	11.500	.045		Green	R445240	B45240	PX-23-11	N/A	N/A
T1124CF	10.250	11.500	.045		Carbon	R445240	B45240	PX-23-11	N/A	N/A
T1124CM	10.250	11.500	.045		Carbon Matrix	R445240	B45240	PX-23-11	N/A	N/A
T1127K1	10.250	11.500	.070		Green	R475240	B66240	PX-23-11X70	N/A	N/A
T1127CF	10.250	11.500	.070		Carbon	R475240	B66240	PX-23-11X70	N/A	N/A
T1127CM	10.250	11.500	.070		Carbon Matrix	R475240	B66240	PX-23-11X70	N/A	N/A

Torque Converter Rings

Allison 1000

ALTO	ID (in)	OD (in)	OAT	*	Material	Ray	BW	Tri	Sonnax	Abco
T1314K1	10.250	12.340	.045		Green	R445350	B45350	SX-23-44	AL-F-5	N/A
T1314CF	10.250	12.340	.045		Carbon	R445350	B45350	SX-23-44	AL-F-5	N/A
T1314CM	10.250	12.340	.045		Carbon Matrix	R445350	B45350	SX-23-44	AL-F-5	N/A
T1317K1	10.250	12.340	.070		Green	R475350	B66350	SX-23-44X70	AL-F-6	N/A
T1317CF	10.250	12.340	.070		Carbon	R475350	B66350	SX-23-44X70	AL-F-6	N/A
T1317CM	10.250	12.340	.070		Carbon Matrix	R475350	B66350	SX-23-44X70	AL-F-6	N/A

GM 310mm, 4L80E

ALTO	ID (in)	OD (in)	OAT	*	Material	Ray	BW	Tri	Sonnax	Abco
T2174K1	10.313	11.563	.045	*	Green	N/A	N/A	SX-23-25	GM-F-7	99
T2174CF	10.313	11.563	.045	*	Carbon	N/A	N/A	SX-23-25	GM-F-7	99
T2174CM	10.313	11.563	.045	*	Carbon Matrix	N/A	N/A	SX-23-25	GM-F-7	99
T2177K1	10.313	11.563	.070	*	Green	N/A	N/A	SX-23-25X70	GM-F-8	99A
T2177CF	10.313	11.563	.070	*	Carbon	N/A	N/A	SX-23-25X70	GM-F-8	99A
T2177CM	10.313	11.563	.070	*	Carbon Matrix	N/A	N/A	SX-23-25X70	GM-F-8	99A

E4OD, 1st Type

ALTO	ID (in)	OD (in)	OAT	*	Material	Ray	BW	Tri	Sonnax	Abco
T2184K1	10.375	11.188	.045	*	Green	N/A	N/A	FX-23-23	N/A	N/A
T2184CF	10.375	11.188	.045	*	Carbon	N/A	N/A	FX-23-23	N/A	N/A
T2184CM	10.375	11.188	.045	*	Carbon Matrix	N/A	N/A	FX-23-23	N/A	N/A
T2187K1	10.375	11.188	.070	*	Green	N/A	N/A	FX-23-23X70	N/A	N/A
T2187CF	10.375	11.188	.070	*	Carbon	N/A	N/A	FX-23-23X70	N/A	N/A
T2187CM	10.375	11.188	.070	*	Carbon Matrix	N/A	N/A	FX-23-23X70	N/A	N/A

4L80E, HD, B500

ALTO	ID (in)	OD (in)	OAT	*	Material	Ray	BW	Tri	Sonnax	Abco
T2194K1	10.375	11.625	.045	*	Green	R445084	B45084	SX-23-47	N/A	N/A
T2194CF	10.375	11.625	.045	*	Carbon	R445084	B45084	SX-23-47	N/A	N/A
T2194CM	10.375	11.625	.045	*	Carbon Matrix	R445084	B45084	SX-23-47	N/A	N/A
T2197K1	10.375	11.625	.070	*	Green	R475084	B66084	SX-23-47X70	N/A	N/A
T2197CF	10.375	11.625	.070	*	Carbon	R475084	B66084	SX-23-47X70	N/A	N/A
T2197CM	10.375	11.625	.070	*	Carbon Matrix	R475084	B66084	SX-23-47X70	N/A	N/A

Chrysler 310mm, A618

ALTO	ID (in)	OD (in)	OAT	*	Material	Ray	BW	Tri	Sonnax	Abco
T2204K1	10.375	13.000	.045	*	Green	N/A	N/A	SX-23-38	N/A	N/A
T2204CF	10.375	13.000	.045	*	Carbon	N/A	N/A	SX-23-38	N/A	N/A
T2204CM	10.375	13.000	.045	*	Carbon Matrix	N/A	N/A	SX-23-38	N/A	N/A
T2207K1	10.375	13.000	.070	*	Green	N/A	N/A	SX-23-38X70	N/A	N/A
T2207CF	10.375	13.000	.070	*	Carbon	N/A	N/A	SX-23-38X70	N/A	N/A
T2207CM	10.375	13.000	.070	*	Carbon Matrix	N/A	N/A	SX-23-38X70	N/A	N/A

Various

ALTO	ID (in)	OD (in)	OAT	*	Material	Ray	BW	Tri	Sonnax	Abco
T2274K1	10.470	11.650	.045	*	Green	R445710	B45710	N/A	N/A	N/A
T2274CF	10.470	11.650	.045	*	Carbon	R445710	B45710	N/A	N/A	N/A
T2274CM	10.470	11.650	.045	*	Carbon Matrix	R445710	B45710	N/A	N/A	N/A

Torque Converter Rings

Chrysler 310mm, A618

ALTO	ID (in)	OD (in)	OAT	*	Material	Ray	BW	Tri	Sonnax	Abco
T2214K1	10.688	12.625	.045	*	Green	N/A	N/A	SX-23-35	GM-F-10	104
T2214CF	10.688	12.625	.045	*	Carbon	N/A	N/A	SX-23-35	GM-F-10	104
T2214CM	10.688	12.625	.045	*	Carbon Matrix	N/A	N/A	SX-23-35	GM-F-10	104
T2217K1	10.688	12.625	.070	*	Green	N/A	N/A	SX-23-35X70	GM-F-12	104A
T2217CF	10.688	12.625	.070	*	Carbon	N/A	N/A	SX-23-35X70	GM-F-12	104A
T2217CM	10.688	12.625	.070	*	Carbon Matrix	N/A	N/A	SX-23-35X70	GM-F-12	104A

A618

ALTO	ID (in)	OD (in)	OAT	*	Material	Ray	BW	Tri	Sonnax	Abco
T1134K1	10.750	12.500	.045		Green	R445230	B45230	SX-23-35	GM-F-10	104
T1134CF	10.750	12.500	.045		Carbon	R445230	B45230	SX-23-35	GM-F-10	104
T1134CM	10.750	12.500	.045		Carbon Matrix	R445230	B45230	SX-23-35	GM-F-10	104
T1137K1	10.750	12.500	.070		Green	R475230	B66230	SX-23-35X70	GM-F-12	104A
T1137CF	10.750	12.500	.070		Carbon	R475230	B66230	SX-23-35X70	GM-F-12	104A
T1137CM	10.750	12.500	.070		Carbon Matrix	R475230	B66230	SX-23-35X70	GM-F-12	104A

Allison B500

ALTO	ID (in)	OD (in)	OAT	*	Material	Ray	BW	Tri	Sonnax	Abco
T2224K1	11.530	13.575	.045	*	Green	R445601	B45601	SX-23-46	N/A	N/A
T2224CF	11.530	13.575	.045	*	Carbon	R445601	B45601	SX-23-46	N/A	N/A
T2224CM	11.530	13.575	.045	*	Carbon Matrix	R445601	B45601	SX-23-46	N/A	N/A
T2227K1	11.530	13.575	.070	*	Green	R475601	B66601	SX-23-46X70	N/A	N/A
T2227CF	11.530	13.575	.070	*	Carbon	R475601	B66601	SX-23-46X70	N/A	N/A
T2227CM	11.530	13.575	.070	*	Carbon Matrix	R475601	B66601	SX-23-46X70	N/A	N/A

Torque Converter Floater Rings

L3N71B Floater

ALTO	ID (in)	OD (in)	OAT Material	Ray	BW	Tri	Sonnax	Abco
TBA	7.219	9.125	.070 Green	N/A	N/A	JX-23-2	N/A	N/A

RL3F01A Floater

ALTO	ID (in)	OD (in)	OAT Material	Ray	BW	Tri	Sonnax	Abco
TBA	7.531	9.750	.070 Green	N/A	N/A	JX-23-9	N/A	N/A

KM175/177 Floater

ALTO	ID (in)	OD (in)	OAT Material	Ray	BW	Tri	Sonnax	Abco
TBA	7.875	9.250	.070 Green	N/A	N/A	TX-26-7	N/A	N/A

GM 245mm Floater

ALTO	ID (in)	OD (in)	OAT Material	Ray	BW	Tri	Sonnax	Abco
TBA	8.000	9.500	.070 Green	N/A	N/A	SX-23-14	N/A	N/A

L4N71B Floater

ALTO	ID (in)	OD (in)	OAT Material	Ray	BW	Tri	Sonnax	Abco
TBA	8.000	9.625	.070 Green	N/A	N/A	JX-23-4	N/A	N/A

Chrysler 9 1/2 Floater

ALTO	ID (in)	OD (in)	OAT Material	Ray	BW	Tri	Sonnax	Abco
TBA	8.000	9.625	.070 Green	N/A	N/A	TX-26-9	N/A	75

A4LD Floater

ALTO	ID (in)	OD (in)	OAT Material	Ray	BW	Tri	Sonnax	Abco
TBA	8.125	10.250	.070 Green	N/A	N/A	FX-23-3	N/A	N/A

Jatco 9.375 Floater

ALTO	ID (in)	OD (in)	OAT Material	Ray	BW	Tri	Sonnax	Abco
TBA	8.313	10.344	.070 Green	N/A	N/A	JX-23-12	N/A	N/A

Chry 10 LU - Floater

ALTO	ID (in)	OD (in)	OAT * Material	Ray	BW	Tri	Sonnax	Abco
T1427K1X	8.800	10.300	.070 * Green	R460000	N/A	TX-26-11X70	N/A	98-A
T1427CFX	8.800	10.300	.070 * Carbon	R460000	N/A	TX-26-11X70	N/A	98-A
T1427CMX	8.800	10.300	.070 * Carbon Matrix	R460000	N/A	TX-26-11X70	N/A	98-A

Chrysler 10 3/4 Floater

ALTO	ID (in)	OD (in)	OAT Material	Ray	BW	Tri	Sonnax	Abco
TBA	9.250	10.750	.070 Green	N/A	N/A	TX-26-4	N/A	55C

GM 298mm Floater

ALTO	ID (in)	OD (in)	OAT Material	Ray	BW	Tri	Sonnax	Abco
TBA	9.500	11.656	.070 Green	N/A	N/A	SX-23-11	N/A	N/A

Torque Converter Sheets

24" X 24" SHEETS : COATED .045"

ALTO	OAT Material	Ray	BW	Tri	Sonnax	Abco
RP45X24K1	.045 Green	N/A	N/A	N/A	N/A	N/A
RP45X24RD	.045 Red	N/A	N/A	N/A	N/A	N/A
RP45X24CF	.045 Carbon	N/A	N/A	N/A	N/A	N/A
RP45X24CM	.045 Carbon Matrix	N/A	N/A	N/A	N/A	N/A

24" X 24" SHEETS : UNCOATED .045"

ALTO	OAT Material	Ray	BW	Tri	Sonnax	Abco
RP45X24K1X	.045 Green	N/A	N/A	N/A	N/A	N/A
RP45X24RDX	.045 Red	N/A	N/A	N/A	N/A	N/A
RP45X24CFX	.045 Carbon	N/A	N/A	N/A	N/A	N/A
RP45X24CMX	.045 Carbon Matrix	N/A	N/A	N/A	N/A	N/A

24" X 24" SHEETS : COATED .070"

ALTO	OAT Material	Ray	BW	Tri	Sonnax	Abco
RP70X24K1	.070 Green	N/A	N/A	N/A	N/A	N/A
RP70X24RD	.070 Red	N/A	N/A	N/A	N/A	N/A
RP70X24CF	.070 Carbon	N/A	N/A	N/A	N/A	N/A
RP70X24CM	.070 Carbon Matrix	N/A	N/A	N/A	N/A	N/A

24" X 24" SHEETS : UNCOATED .070"

ALTO	OAT Material	Ray	BW	Tri	Sonnax	Abco
RP70X24K1X	.070 Green	N/A	N/A	N/A	N/A	N/A
RP70X24RDX	.070 Red	N/A	N/A	N/A	N/A	N/A
RP70X24CFX	.070 Carbon	N/A	N/A	N/A	N/A	N/A
RP70X24CMX	.070 Carbon Matrix	N/A	N/A	N/A	N/A	N/A



TORQUE CONVERTER

ALTO#	REF#	DESCRIPTION	OAT	QTY	NOTES
GENERAL MOTORS					
6T40/6T45					
129320	BW-SP-5	SPRAG, TORQUE CONVERTER 236mm 04+		1	22 ELEMENT
6L45E					
201714	NA	FR GM 6L45E TORQ CONV 210MM	.138/3.51	1	Heg - 24T - ID: 8.700"
CHRYSLER					
68RFE					
128714	CH-CP-1	FR CHRYSLER 68RFE 07+	0.16/4.06	4	Heg - 35T - ID: 10.150"
AS68RC					
202759	NA	FR/ST PACK AS68RC 3500 TRUCK 07+ Includes Friction, Steel, PP		1	
202714	AS-CP-1FK	FR AS68RC 3500 TRUCK 07+	.100/2.54	3	Red - 36T - OD: 7.438" - SPR
202715	AS-CP-2SK	ST AS68RC 3500 TRUCK 07+	.071/1.80	3	16T - ID: 6.254"
202760	NL	ST AS68RC 3500 TRUCK 07+	.249/6.32	1	16T - ID: 6.254"
AS69RC					
202716	NA	FR AS69RC 14+	.100/2.54	3	Heg - 42T - OD: 8.550" - SPR
202717	NA	ST AS69RC 14+	0.071/1.80	3	16T - ID: 7.340"
AISIN					
A581					
168712-315	NA	FR A581 TORQ CONV 01+	0.124/3.14	1	Heg - 50T - OD: 9.800"
AW 55-50SN					
159320	BW-SP-3	SPRAG TORQUE CONVERTER 23 ELEMENT		1	
AW TF-60SN					
56835	NA	DSEAL KIT MT643 TORQUE CONVERTER 72+		1	contains 5 seals
129320	BW-SP-5	SPRAG, TORQUE SONVERTER 236mm 04+		1	22 ELEMENT
A40045TCU25	VW-O-3	SEALING RING TORQ CONV AW TF-60SN 1.561 X 1.373 X .090"	.090/2.30	1	TEFLON, SCARF CUT
TF-80SC					
197320	BW-SP-2	SPRAG, TORQUE CONVERTER 05+		1	24 ELEMENT
TF-80SD					
197320	BW-SP-2	SPRAG, TORQUE CONVERTER 05+		1	24 ELEMENT
AW 450-43LE					
153320	NA	SPRAG, TORQUE CONVERTER 98+		1	
ALLISON					
MT640, 643, 644, 650, 653, 654					
055055	23016564	Lathe Cut, Lockup clutch backing plate 72+		1	
056301	6770845	Piston, Lockup clutch TORQUE CONV 72+		1	
056835	NA	SEAL KIT MT643 TORQUE CONV 72+		1	contains 5 seals
FORD					
6R80					
183718A	NA	FR 6R80 TORQUE CONVERTER EXT 07+	.167/4.24	1	G3C- 40T - ID: 8.706"
6R140					



TORQUE CONVERTER

ALTO#	REF#	DESCRIPTION	OAT	QTY	NOTES
HONDA					
MT4A					
129320	BW-SP-5	SPRAG, TORQUE SONVERTER 236mm 04+		1	22 ELEMENT
172715	HO-CP-2	ST HONDA MT4A TORQUE CONVERTER	.047/1.19	1	36T - ID: 7.173"
HYUNDAI/KIA					
A5HF1					
197320	BW-SP-2	SPRAG, TORQUE CONVERTER 05+		1	24 ELEMENT
MERCEDES					
722.6/ 722.9 Early Generation					
141714	MB-CP-7BW	FR 722.6 TORQUE CONVERTER SEL. 96+	.107/2.70	1-2	Red - 34T - OD: 6.929" - SB
141714X	MB-CP-7BW	FR 722.6 TORQUE CONVERTER 96+	.107/2.70	1-2	Red - 34T - OD: 6.929" - SB
141714X232	MB-CP-5	FR 722.6 TORQUE CONVERTER SEL. 96+	.091/2.32	AR	Red - 34T - OD: 6.929" - SB
141714-200	NA	FR 722.6 TORQ CONV PPK 96+	.078/1.98	1-2	Red - 34T - OD: 6.929" - SB
141714-232	MB-CP-5	FR 722.6 TORQUE CONVERTER SEL. 96+	.091/2.32	1-2	Red - 34T - OD: 6.929" - SB
141715-177	MB-CP-3KR	ST 722.6 TORQUE CONVERTER 96+	.069/1.75	AR	20T - ID: 5.629"
141715AK177	NA	ST 722.6 TORQUE CONVERTER PPK 96+	.069/1.75	3	20T - ID: 5.629"
141715-390	MB-CP-4K	ST 722.6 TORQUE CONVERTER 96+	.155/3.95	AR	20T - ID: 5.629"
141715-497	NA	ST 722.6 TORQUE CONVERTER 96+	.196/4.97	AR	20T - ID: 5.629"
141758	MB-CP-272KBW	KIT 722.6 TORQ CONV 272MM Includes 2 Frictions, 3 Steels, and Ring/Seal Kit 96+		1	
141758A	NA	KIT 722.6 TORQ CONV 290MM Includes 2 Frictions, 3 Steels, and Ring/Seal Kit 96+		1	
141759	NA	KIT 722.6 TORQ CONV PPK Includes 3 Frictions, 4 Steels, Snapping, and Ring/Seal Kit 96+		1	
722.7					
147714	NA	FR 722.7 TORQUE CONV 30 SQUARE TOOTH 98+	.106/2.69	AR	Heg - 30T - ID: 6.930" - SB
147714A	NA	FR 722.7 TORQUE CONV SQUARE TOOTH 2.79MM	.110/2.79	AR	Heg - 30T - ID: 6.930" - SB
722.9 Late Generation					
141718A	MB-CP-8	FR 722.9 TORQUE CONVERTER	.109/2.77	2	Heg - 40T - ID: 6.104" - SB
141719A	MB-CP-15S	ST 722.9 TORQUE CONVERTER	.078/1.98	3	36T - OD: 7.400"
141719A180	MB-CP-14S	ST 722.9 TORQUE CONVERTER	.071/1.80	3	36T - OD: 7.400"
RENAULT					
DPO/AL4					
155325	RE-SP-1	SPRAG, TORQUE CONVERTER 97+		1	
155714	NA	FR DPO/AL-4 TORQUE CONVERTER 97+	.139/3.53	AR	Red - 24T - ID: 6.64" - SM
155716	RE-CP-2	FR DPO/AL-4 TORQUE CONVERTER 05+	.159/4.04	AR	Red - 24T - OD: 8.750"
155718	NA	FR DPO/AL-4 TORQUE CONVERTER 05+	.106/2.69	1	Red - 40T - ID: 7.361" - CUP
NISSAN					
RE5R05A					
174759	NA	RE5R05A TORQ CONV REPAIR KIT Includes Friction, Steel, PP and Ring/Seal Kit 02+			
174712-188	JA-CP-1	FR RE5R05A TORQUE CONV 02+	.074/1.88	3	Heg - 40T - OD: 6.474" - SB



TORQUE CONVERTER

ALTO#	REF#	DESCRIPTION	OAT	QTY	NOTES
NISSAN continued					
174713-178	JA-CP-2	ST RE5R05A TORQUE CONV 02+	.070/1.78	4	36T - ID: 5.610"
174762	NA	ST RE5R05A TORQUE CONV PP 02+	.258/6.55	1	35T - ID: 5.607"
174835	NA	RE5R05A RING AND SEAL KIT			
RE7R01A					
174759A	NA	RE7R01A TORQ CONV REPAIR KIT Includes Friction, Steel, and PP 09+		1	
174722-180	JA-CP-4	FR RE7R01A TC 09+	.071/1.80	3	Heg - 24T - OD: 6.825"
174723-180	NA	ST RE7R01A TC 09+	.071/1.80	3	30T - ID: 5.607"
174762A	NA	ST RE7R01A TC PP 09+		1	30T - ID: 5.609"
TOYOTA					
AB60E/F					
A40045TCU25	VW-O-3	SEALING RING TORQ CONV TOY AB60E/F 1.561 X 1.373 X .090"	.090/2.30	1	TEFLON, SCARF CUT
VOLKSWAGEN					
TR60-SN					
185714-262	NA	FR TR60-SN TORQ CONV 04+	.103/2.62	1	TAN- 30T - OD: 7.033"
185715-235	NA	ST TR60-SN TORQ CONV 04+	.092/2.34	1	48T - ID: 5.862"
185716	AW-CP-6F	FR TR60-SN TORQ CONV 04+	.147/3.73	2	
185717-320	AW-CP-4S	ST TR60-SN TC .126" 04+	.126/3.20	1	20T - ID: 8.760"
TR60-SN					
185717-500	AW-CP-5PX	ST TR60-SN TC .197" 04+	.197/5.00	1	20T - ID: 8.760"
185765-380	NA	ST TR60-SN TORQ CONV PP 04+	.150/3.81	1	48T - ID: 5.862"
ZF					
4HP24					
183320	BW-SP-4	Sprag, Torque Converter 83+ Captive Clutch, Single Friction		1	18 ELEMENT
5HP19					
139714	FS-CP-2	FR ZF5HP19 TORQUE CONVERTER 95+	.122/3.10	AR	Red - 24T - ID: 8.153" - grooved
139714A	NA	FR ZF5HP19 TORQUE CONVERTER 95+	.122/3.1	AR	HEG- 24T - ID: 8.379"
139714A350	FS-CP-2TKR	FR ZF5HP19 TORQUE CONVERTER 95+	.138/3.5	AR	HEG- 24T - ID: 8.379"
183320	BW-SP-4	Sprag, Torque Converter		1	18 ELEMENT
5HP24					
132714	FS-CP-3	FR ZF5HP24 TORQUE CONVERTER 95+	.120/3.04	AR	Tan - 24T - ID: 8.379" - SM
132714A	FS-CP-3	FR ZF5HP24 TORQUE CONVERTER 95+	.120/3.04	AR	Red - 24T - ID: 8.379" - SM
132714-386	FS-CP-3	FR ZF5HP24 TORQUE CONVERTER 95+	.120/3.86	AR	Tan - 24T - ID: 8.379" - SM
5HP30					
113714	FS-CP-1	FR ZF5HP30 TORQUE CONVERTER 93+	.118/3.00	AR	Red - 24T - OD: 9.354" - SM
113714-450	FS-CP-4C	FR ZF5HP30 TORQUE CONVERTER 93+	.177/4.50	AR	Red - 24T - OD: 9.354" - SM
113714C300	FS-CP-1C	FR ZF5HP30 TORQUE CONVERTER 93+	.118/3.00	AR	Carbon - 24T - OD: 9.354" - SM



TORQUE CONVERTER

ALTO#	REF#	DESCRIPTION	OAT	QTY	NOTES
ZF continued					
6HP19					
183320	BW-SP-4	Sprag, Torque Converter 83+ (245mm and 255mm)		1	18 ELEMENT
183715	ZF-CP-7	ST Z6HP19 TORQUE CONVERTER 02+	.108/2.74	1	24T - OD: 7.570" - grooved
143714	FS-CP-7BW	FR ZF6HP19 TORQ CONV 245MM 04+	.157/3.99	1	Heg - 24T - ID: 7.874" with cutouts
143716	ZF-ZP-13	FR ZF6HP19 TORQ CONV 245MM	.140/3.56	1	Heg - 24T - ID: 8.350" - spiral
6HP21					
143714A	ZF-CP-12	FR ZF6HP21 TORQ CONV 245MM	.140/3.56	1	Heg - 42T - OD: 8.661"
6HP26					
183320	BW-SP-4	Sprag, Torque Converter 83+ (280mm)		1	18 ELEMENT
183714	FS-CP-56BW	FR ZF6HP26 TORQ CONV 260MM 02+	.160/4.06	1	KEV - 24T - ID: 8.200" with cutouts
183714A	ZF-CP-6	FR ZF6HP26 TORQ CONV 280MM 02+	.160/4.06	1	KEV - 24T - ID: 8.725" with cutouts
183715	ZF-CP-7	ST ZF6HP19/26 TORQ CONV 255MM 02+	.108/2.74	1	24T - OD: 7.570" - grooved
183716	ZF-CP-4	FR ZF6HP19/26 TORQ CONV 255MM 02+	.140/3.56	2	Heg - 24T - ID: 6.300" with cutouts
183720	ZF-CP-5	ZF6HP26 TORQ CONV 275MM 02+	.106/2.69	1	Heg - 20T - ID: 7.283" with cutouts
183722	ZF-CP-2	ZF6HP26/28 TORQ CONV 280MM 02+	.160/4.06	1	Heg - 24T - ID: 8.782" with bent tooth
183724	ZF-CP-1	ZF6HP26 TORQ CONV 255MM 02+	.145/3.68	1	Heg - 24T - ID: 6.300"
6HP28					
TBA	NA	ZF6HP28 TORQ CONV (BMW 750/760) 05+	.157/3.99	1	Heg - 24T - ID: 8.779" with cutouts
183320	BW-SP-4	Sprag, Torque Converter 83+		1	18 ELEMENT
183722	ZF-CP-2	ZF6HP26/28 TORQ CONV 280MM	.160/4.06	1	Heg - 24T - ID: 8.782" with bent tooth
8HP45					
215614	NA	SEAL KIT ZF8HP45 TORQUE CONVERTER INNER/OUTER		1	(Contains 1-A50030 Small, 1-A20027B Large)
A20027B	NA	ZF8HP45 MOLDED RUBBER OUTER TORQ CONV SEAL "D" RING - Large		1	188.42 X 197.3 X 1.83
A50030	NA	ZF8HP45 MOLDED RUBBER INNER TORQ CONV SEAL Small		1	102mm ID
215714	ZF-CP-8F	ZF8HP45 TORQUE CONVERTER 11+ SEG	0.096/2.44	1	GRY - 80T - OD: 7.766 SEG
215715-175	ZF-CP-9SX	ZF8HP45 TORQUE CONVERTER 11+	.069/1.75	1	30T - ID: 6.498"
215715-277	ZF-CP-10SX	ZF8HP45 TORQUE CONVERTER 11+	.109/2.77	1	30T - ID: 6.498"
215765	ZF-CP-11SX	ZF8HP45 TORQUE CONVERTER PP 11+	.168/4.27	1	30T - ID: 6.498"
ECOMAT					
121705A200	4139-373-029	ST ZF5HP500 F PACK WIDER TOOTH NO HOLES 90+	.079 / 2.00	AR	24T - ID: 9.320"
121706	4166-238-037	FR TORQUE CONV HEG SB Except 6HP600, 5HP590 90+	.118 / 3.00	2	Grn - 18T - OD: 12.930" - SM
121706A320	NA	FR TORQUE CONV HEG 90+ (6HP600)	.124 / 3.15	2	Heg - 36T - OD: 15.398" - PL
121706C310	4166-236-134	FR W360 TORQUE CONV	.122 / 3.10	AR	Heg - 59T - OD: 12.96"
121706D310	0501-212-249	FR TORQUE CONV 90+	.123 / 3.12	1	66T - OD: 15.009"
121707	4139-334-004	ST TORQUE CONV 90+ Except 6HP600	.079 / 2.00	AR	12T - ID: 11.887"
121707-300	NA	ST TORQUE CONV 90+ Except 6HP600	.118 / 3.00	AR	12T - ID: 11.887"
121707-350	4139-334-006	ST TORQUE CONV 90+ Except 6HP600	.138 / 3.50	AR	12T - ID: 11.887"



TORQUE CONVERTER

ALTO#	REF#	DESCRIPTION	OAT	QTY	NOTES
ECOMAT continued					
121707-400	4139-334-005	ST W360 TORQUE CONV 90+	.157 / 3.99	AR	12T - ID: 11.887"
121707A250	NA	ST TORQUE CONV 90+ 6HP600	.098 / 2.50	2	36T - ID: 14.313"
121707A300	4166-338-202	ST TORQUE CONV 90+ 6HP600	.118 / 3.00	1	36T - ID: 14.313"
121707B400	0501-320-306	ST TORQUE CONV 12 TEETH 90+	.157 / 4.00	AR	12T - ID: 11.800"
121707D405	0501-318-589	ST TORQUE CONV 90+	.159 / 4.04	1	8T - ID: 13.224"
121716-305	0501-213-150	FR 5HP590 TORQ CONV 59T 90+	.079 / 2.00	6-8	Heg - 59T - OD: 13.365" - PLNI
VOITH					
125714	58.2250.13 58.2250.12	FR TORQUE CONVERTER	.138/3.50	3	Brz - 63T - OD: 12.51" - Sprl
125715	50.9743.13	ST TORQUE CONVERTER	.098/2.50	4	12T - ID: 10.429"