



FORD AOD Reverse Clutch PowerPack® 1980-1989

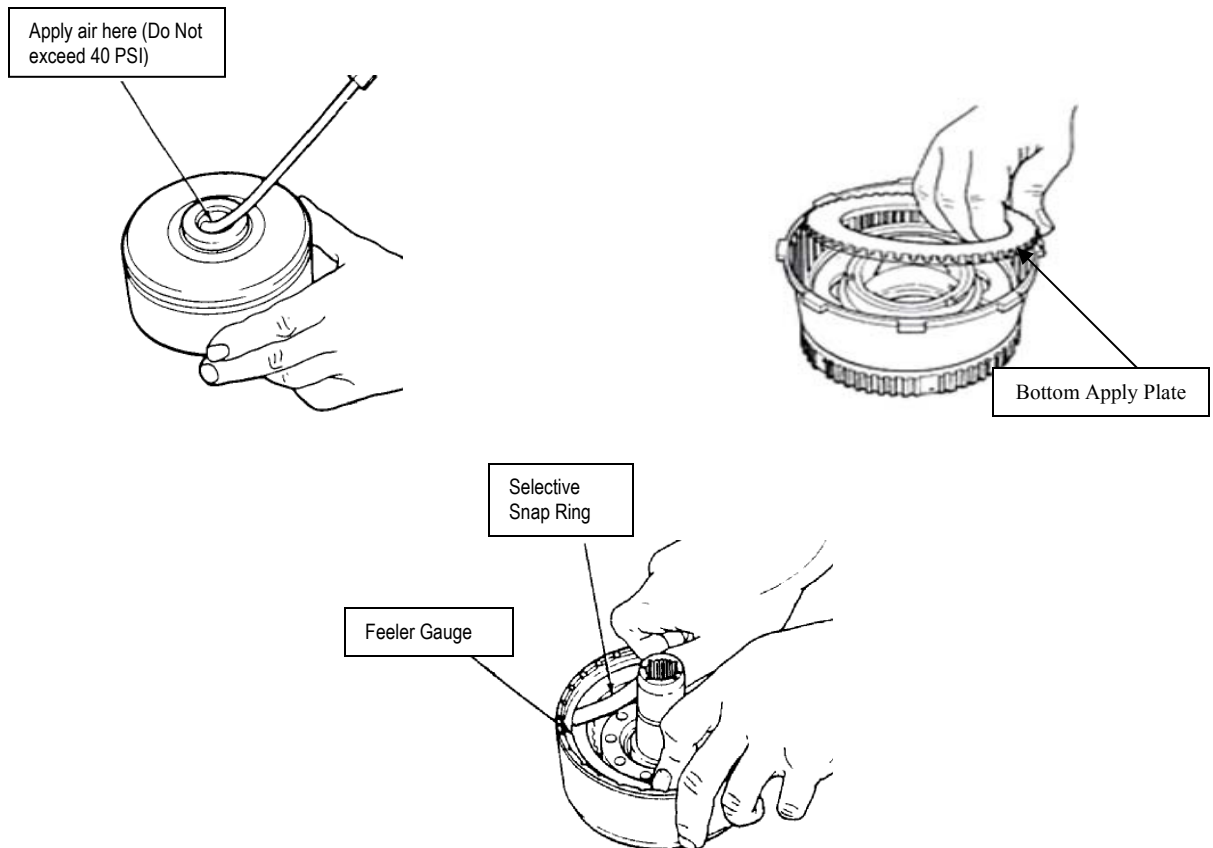
ALTO PART # 049758

Alto # 049758 POWERPACK® CONTENTS:

- (5) 049720A147 .058" Frictions
- (4) 023701-140 .055" Steels
- (1) 023701-350 .138" Pressure Plate

INSTALLATION INSTRUCTIONS

The stack-up of the reverse clutch drum is the same method as OE. Start by installing the bottom by applying plate with the dished side facing down.



Apply air to assembled clutch pack to seat friction and steel elements. Check clutch pack clearance using a feeler gauge, measure between the top of the pressure plate and the bottom of the selective snap ring. Clearance should be .040" to .075" (1.02 to 1.91mm) Clutch pack clearance can be adjusted by one of four selective snap rings available from Alto Products..

Note: Presoak all friction plates in manufacturer's recommended ATF for 15-20 minutes prior to assembling the clutch pack.



FORD AOD Reverse Clutch PowerPack® 1980-1989

AVAILABLE

SELECTIVE SNAP RINGS

(Contact your distributor)

ALTO Part #	Replaces OEM #	Thickness
049251-052	E0AZ-7D483A	.052"
049251-066	E0AZ-7D483B	.066"
049251-080	E0AZ-7D483C	.080"
049251-094	F3AZ-7D483-D	.094"