

OEI™ PowerSolutions®

GM POWERPACKS®

019755HPPowerglide Front Clutch 62+
019756Powerglide Front Clutch "inertia" 62+
019756APowerglide Front Clutch 1 sided 62+
019758Powerglide Reverse Anti-Drag® 62+
031755HPTH400 Forward 64-95
031756HPTH400, 4L80E Direct 64+
031757HPTH400 Intermediate 64-95
031755AHP4L80E Forward 90+
031757AHP4L80E Intermediate 90+
043757TH200, 200C, 200-4R Direct 76+
057757A4L60/65/70 3-4 "A Pack" 1 Sided 82+
057757BHP4L60/65/70 3-4 Clutch 82+
152755 / 152755AAllison 1000 C1 99-05 / 06+
152756 / 152756AAllison 1000 C2 99-05 / 06+
152757 / 152757AAllison 1000 C3 99-05 / 06+
152758 / 152758AAllison 1000 C4 99-05 / 06+
152759Allison 1000 C5 99+
1957566L80E 4-5-6 1 Sided 06+
1957576L80E 3-5-Rev. 1 Sided 06+

GM POWERBANDS®

019961Powerglide Red Eagle® Wide 62+
019961CPowerglide Carbonite® Wide 62+
019961KPowerglide Kevlar® Wide 62+
057961TH700-R4 Red Eagle® Wide 82+
057961CTH700-R4 Carbonite® Wide 82+
043961TH200/C/4R Red Eagle® Wide 76+
043961CTH200/C/4R Carbonite® Wide 76+
043962TH200/C/4R Red Eagle Wide Wedge Anchor
043962CTH200/C/4R Carbonite Wide Wedge Anchor

FORD POWERPACKS®

025755AC-4 Reverse 64-81
025755C-5 Reverse 82-86
026755C-6, 4R100 Forward 66+
026757HPC-6, E4OD Direct 66+
026756E4OD, 4R100 Intermediate 89+
026758 / 026758AE4OD, 4R100 OD 89-98 / 99+
049750AHPAOD Direct 80-91
049754AHPAOD-E Direct GROB 91+
049756HPAOD, AOD-E Intermediate 80+
049758AAOD, AOD-E Reverse GROB, 80-92
166756 / 166756A5R110W Forward 03-04 / 05+
1667575R110W Direct 03+

FORD POWERBANDS®

026968C-6 Red Eagle® Wide 66+
026968CC-6 Carbonite® Wide 66+

CHRYSLER POWERPACKS®

028755A518, A618, TF8, A727 Front 62+
028756 / 028756AA518, A618 Rear 90-02 / 03+
028757A518, A618 Overdrive Brake 90+
077757A604, A606 Overdrive 90+
12875545RFE, 545RFE UD/OD 99+
12875745RFE, 545RFE 2nd Clutch 99+
12875845RFE, 545RFE 4th Clutch 99+

IMPORT POWERPACKS®

108754Mitsubishi F4A Direct 91+
174756Nissan RE5R05A Input Kolene® 02+
174757Nissan RE5R05A Direct Kolene® 02+

CERTIFIED
ISO 9001:2000



AUTOMATIC TRANSMISSION PARTS

- Friction and Steel Plates
- Hi-Performance Red Eagle Clutches
- Banner, Master and Super Rebuilding Kits
- Bands, Filters, Modulators, Gaskets and Seals
- Gears and Hard Parts
- OEI™ PowerPacks®, Powerbands®

STANDARD TRANSMISSION PARTS

- Clutch Kits
- Clutch Discs, Clutch Covers, Bearings
- Clutch Hydraulics

PRODUCT LINE APPLICATIONS

- Automotive and Light Duty
- Light, Medium and Heavy Duty Truck
- Heavy Duty Off Highway and Agricultural
- Hi-Performance
- Marine
- Motorcycle

MARKETS SERVED

- Original Equipment
- Original Aftermarket
- Original Equipment Improvement (OEI™)



ALTO PRODUCTS CORP.
Alto Way • Atmore • AL • 36502
251.368.7777 • Fax: 251.368.7774
sales@altoUSA.com • altoUSA.com

EXPORT SALES:
International Sales Offices:
Latin America: +1 (305) 892.7777
Mexico: +52 (81) 8059.1964
Europe: +31 (610) 432.191
Middle East: +971 (4) 886.1741
Taiwan: +886 (7) 765.2359
Australia: +61 (2) 9654.2764
China: +86 (755) 2586.5577

ALTO RED EAGLE

ORIGINAL HI-PERFORMANCE TRANSMISSION PRODUCTS



AMERICAN HOT ROD TO THE "NEW BREED" SPORT COMPACT CAR

A & A TRANSMISSION:

"R & D of the Torque Flight has breathed new life, durability and strength into this transmission, thanks to Red Eagle® clutches and Kolene® steels."

—Rick Allison
World's Fastest Torque Flight

DYNAMIC RACING TRANSMISSIONS:

"For over a decade, Dynamic Racing has used Alto in specialized racing applications. Red Eagle® clutches and Kolene® steels are key elements in our high horsepower Pro-Tree II Glides."

—Harold Miller

HUGHES PERFORMANCE:

"With the advanced horsepower in racing, there is the need for a superior transmission. That's why I use and recommend Red Eagle® clutches and Kolene® steels."

—Jim Hughes
Super Comp NW National Champ

NORTH AMERICAN DIESEL PERFORMANCE:

"For many years we have had great success using Alto Clutches in all our Heavy Duty Heavy Hauler Transmissions. Thank you for your support."

—Barry Volner & Roger Lee

PERFORMANCE AUTOMATIC TRANSMISSIONS:

"For over 15 years we've been building the fastest C-4 transmissions in the country. Our customers demand the best clutch plates money can buy and the Red Eagle® clutches have withstood all the punishment."

—Tom Cyr

SUNCOAST CONVERTER:

"We have used thousands of Alto plates over the last 10 years with zero issues. Some applications are subject to loads in excess of 1600 ft. lbs of torque, incredibly higher than the original design. Thanks for a great product."

—Ron Wolverton

PATC:

"For 20 years we have used Red Eagle clutches in HP/HD Transmissions. This is more important than ever with power levels going up every year. We distribute Red Eagle clutches, Bands, and Shafts worldwide."

—Don Kennedy

TRANSMISSION SPECIALTIES:

"We use Alto in the assembly of all Hi-Performance transmissions we manufacture. Red Eagle® clutches and Kolene® steels have the durability and consistency necessary to withstand tough demands expected of a quality Hi-Performance transmission."

—Peter Miller

TSR RACING PRODUCTS:

"For the utmost in performance and reliability we install Red Eagle® clutches and Kolene® steels in every unit."

—Carl Munroe
National SuperRod Runner-Up

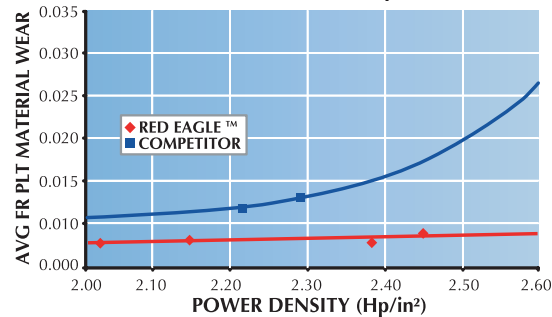
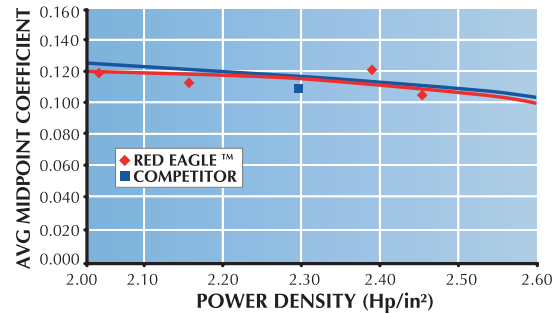


Red Eagle® Friction Plates

Alto has pioneered Hi-Performance racing innovations for over 25 years. We are the leader in Hi-Performance technology with Original Equipment Improvement Products (OEI™) which include: PowerPacks®, PowerBands®, Kolene® Steels, Turbulator Steels, Anti-Drag™ Steels and Red Eagle® Frictions.

Clutches fail in Hi-Performance applications due to excessive heat. Original Red Eagle® clutches are specially designed to reduce slipping which generates heat and can withstand higher temperatures than the competition. Our unique dual saturation process imparts high performance frictional properties and high heat resistance.

Red Eagle® vs. the Competition



Alto Red Eagle® material offers similar mid-point coefficient at high horsepower applications. In addition, the Alto Red Eagle® material gives superior friction wear characteristics at high energy engagements. The leading competitor's material degrades thermally and physically after reaching approximately 2.25 HP/in².



Innovations and enhancements make Alto the serious racers' choice. Our products have been imitated but never duplicated.

BENEFITS FROM THE ORIGINAL RED EAGLE® BRAND:

- Lessened friction material wear
- Reduced incidence of steel plates burning and warping
- Increased surface area for decreased "slipping"
- Increased holding
- Decreased heat generation



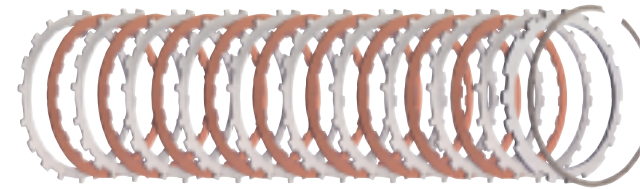
POWERGLIDE SOLUTIONS FOR THE SERIOUS RACER

- PowerPacks® with Kolene® Turbulator Steels
 - ▶ Increases capacity and reduces heat
- PowerBands® in Red Eagle® and Carbonite® Lining
 - ▶ Enhances torque load and improves shift
- Reverse Pressure Plate Manufactured with High Strength Steel
 - ▶ Prevents shattering of pressure plate
- Selective Reverse Steels
 - ▶ Trans Brake Adjustment
- RapidRelease™ High and Reverse Steel Plates
 - ▶ Reduces heat and parasitic drag
- Chrome and Hi-Performance Teflon Sealing Rings
 - ▶ Improves sealing performance under load

Original Equipment Improvement (OEI™)

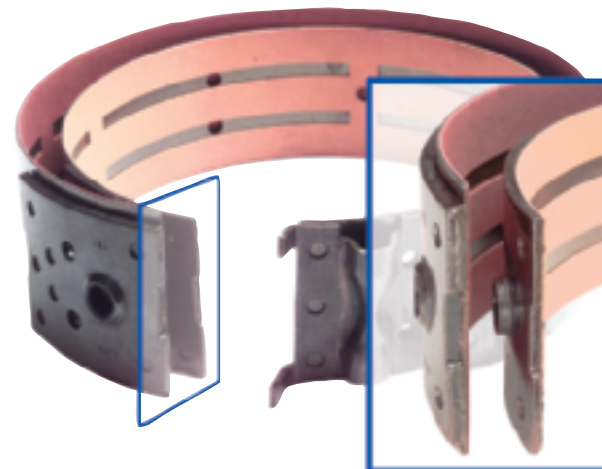
POWERPACKS®

Alto PowerPacks® are the industry standard in Hi-Performance and Heavy-Duty applications. PowerPacks® are specially engineered clutch packs designed with additional clutches to increase friction plate capacity. This capacity increase enables torque load to spread over more friction area, resulting in a clutch pack that can handle higher torque load with reduced heat generation. These PowerPacks® are available on the most popular racing units in both stock and Red Eagle® Hi-Performance lining.



POWERBANDS®

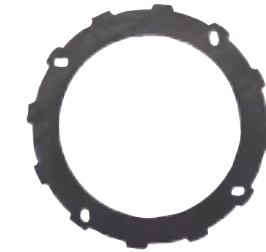
PowerBands® enhance torque load and improve shift quality. They are designed wider than the original band to increase stopping capacity of up to 25%. Anchors have been increased in thickness and heat treated when required to eliminate premature failures. These bands are available on the TH700R4, TH200, C-6, 4F27E/FN4A-EL, A413/A670 and Powerglide in both Red Eagle® and Carbonite® Hi-Performance lining.



Steel Separator Plate Technology

KOLENE® STEEL PLATES

Kolene® is a salt bath nitriding process. In technical terms, it is a thermo chemical diffusion process, whereby ferrous parts are processed in molten salt with a specific nitrogen potential. It provides a surface treatment that enhances wear and fatigue resistance from 200% to 500% while imparting higher heat resistance and increased lubricity.

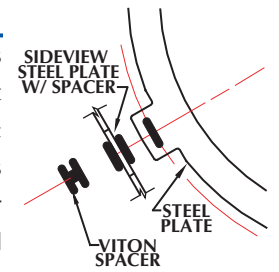


TURBULATOR TECHNOLOGY

Turbulator technology reduces heat and parasitic drag by breaking the surface tension of the fluid between friction and steel elements.

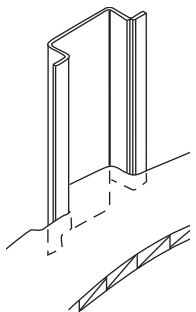
ANTI-DRAG® STEELS

Alto's patented Anti-Drag™ plates eliminate the parasitic drag that takes place when a multiple disc clutch is disengaged. Viton spacers (rubber grommets), slightly thicker than the friction plate, are inserted into the teeth and used in the clutch pack to separate the steels from the friction discs. This technology decreases clutch drag and reduces heat.



CASESAVERS™

Reverse steels scar the Powerglide case. Indentations produced by the reverse steels cause the plates to stick and allow metal to enter in the valve body. This plate hang-up increases reaction time. Alto's patented CaseSaver™ gives the steel plate a smooth surface to interact with; eliminating clutch hang-up and preventing extraneous metal from reaching the valve body.



ALTO DIESEL PERFORMANCE PowerPacks®



Enhancements and improvements in friction material technology maintain Alto Products Corp. as the market leader in Original Equipment Improvements (OEI®). The Diesel Performance market is the latest area that separates Alto Clutches from the competition.

Our Friction Material and durability enhancements lead the Diesel Performance market. Due to engine and computer modifications OE clutches fail in these applications due to excessive heat and insufficient capacity. Alto Red Eagle Hi-Performance and Hi-Energy Friction Materials incorporated in extra capacity PowerPacks® make Alto the only choice for High Horsepower and High Torque applications for the Diesel Performance market.

Red Eagle® Friction Plates

Alto has pioneered Hi-Performance racing innovations for over 25 years. We are the leader in Hi-Performance technology with Original Equipment Improvement Products (OEI®) which include: PowerPacks®, PowerBands®, Kolene® Steels, Turbulator Steels, Anti-Drag™ Steels and Red Eagle® Frictions.

Clutches fail in Hi-Performance applications due to excessive heat. Original Red Eagle® clutches are specially designed to reduce slipping which generates heat and can withstand higher temperatures than the competition. Our unique dual saturation process imparts high performance frictional properties and high heat resistance.

Benefits from the Original Red Eagle® Brand

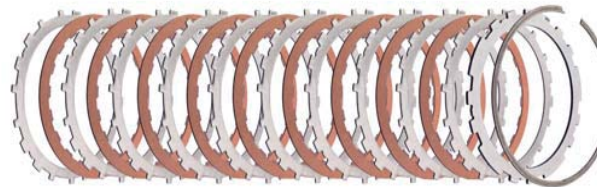
- Lessened friction material wear
- Reduced incidence of steel plates burning and warping
- Increased surface area for decreased "slipping"
- Increased holding
- Decreased heat generation

Kolene® Steel Plates

Kolene® is a salt bath nitriding process. In technical terms, it is a thermo chemical diffusion process, whereby ferrous parts are processed in molten salt with a specific nitrogen potential. It provides a surface treatment that enhances wear and fatigue resistance from 200% to 500% while imparting higher heat resistance and increased lubricity.

POWERPACKS®

Alto PowerPacks® are the industry standard in Hi-Performance and Heavy-Duty applications. PowerPacks® are specially engineered clutch packs designed with additional clutches to increase friction plate capacity. This capacity increase enables torque load to spread over more friction area, resulting in a clutch pack that can handle higher torque load with reduced heat generation. These PowerPacks® are available on the most popular diesel performance units.



GM ALLISON POWERPACKS®

B1000, B2000, B2400

152755	Powerpack®	C-1 Clutch 1999-2005
152755A	Powerpack®	C-1 Clutch 2006-On
152756	Powerpack®	C-2 Clutch 1999-2005
152756A	Powerpack®	C-2 Clutch 2006-On
152757	Powerpack®	C-3 Clutch 1999-2005
152757A	Powerpack®	C-3 Clutch 2006-On
152758	Powerpack®	C-4 Clutch 1999-2005
152758A	Powerpack®	C-4 Clutch 2006-On
152378HP	Shaft	Output Shaft, 4WD 300M
152377HP	Shaft	Input Shaft, 300M

FORD POWERPACKS®

C6, E4OD, 4R100

026755	Powerpack®	E4OD C6, 4R100 Forward 1966-On
026756	Powerpack®	4R100 Intermediate 1999-On
026757HP	Powerpack®	4R100 C6, E4OD Direct 1966-On
026758A	Powerpack®	E4OD OverDrive 1989-1998
026758	Powerpack®	4R100 OverDrive 1999-On

5R110W

166757	Powerpack®	Direct 2003-On
166756	Powerpack®	Forward 2003-2004
166756A	Powerpack®	Forward 2005-On

CHRYSLER POWERPACKS®

TF8, A727, A518, 47RE, A618, 48RE

028755	Powerpack®	Front 1971-2002
028756	Powerpack®	Rear 1990-2002
028756A	Powerpack®	Rear 2003-On
028757	Powerpack®	OverDrive Brake 90-On
028381AHP	Shaft	Intermediate Shaft, 300M



AUTOMATIC TRANSMISSION PARTS

- Friction and Steel Plates
- Hi-Performance Red Eagle Clutches
- Banner, Master and Super Rebuilding Kits
- Gears and Hard Parts
- OEI® Parts and PowerSolutions™

STANDARD TRANSMISSION PARTS

- Clutch Kits
- Clutch Discs, Clutch Covers, Bearings
- Clutch Hydraulics

PRODUCT LINE APPLICATIONS

- Automotive and Light Duty
- Light, Medium and Heavy Duty Truck
- Heavy Duty Off Highway and Agricultural
- Hi-Performance
- Marine
- Motorcycle

MARKETS SERVED

- Original Equipment
- Original Aftermarket
- Original Equipment Improvement (OEI®)

Alto products are distributed by a worldwide network of professional parts distributors. If your distributor does not stock Alto Red Eagle® Diesel Performance parts, contact us and we will put you in touch with one who does.



ALTO PRODUCTS CORP
 Alto Way · Atmore, AL · 36502
 251.368.7777 · Fax: 251.368.7774
 sales@altoUSA.com · altoUSA.com

GMC DURAMAX DIESEL Diesel



FORD POWERSTROKE stroke



DODGE CUMMINS Cummins



ALTO **RED EAGLE**®

2010

ORIGINAL HI-PERFORMANCE TRANSMISSION PRODUCTS



Robbie Welch
2004 IHRA President's Cup Nationals
Hurst Hot Rod Division Champion
Maryland International Raceway



Mike Valera,
5x Thunder Nationals Champion
3x World Finalist



Joel Graathouse
2003 Pro Edelbrock Super Street Champion & Record Holder



Alto Way • Atmore, AL • 36504
Tel: 251.368.7777 • Fax: 251.368.7774
www.altoUSA.com • sales@altoUSA.com

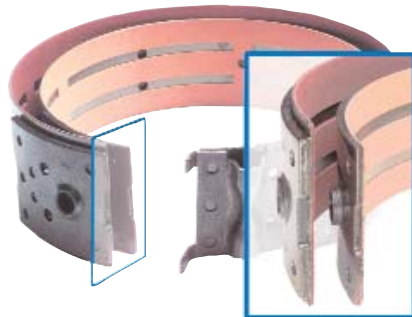
AMERICAN HOT ROD TO THE "NEW BREED" SPORT COMPACT CAR

INNOVATIONS & ENHANCEMENTS MAKE ALTO THE SERIOUS RACERS' CHOICE.



Alto has pioneered Hi-Performance racing innovations for over 25 years. We are the leader in Hi-Performance technology with Original Equipment Improvement Products (OEI™) which include: PowerPacks®, PowerBands®, Kolene® Steels, Turbulator Steels, Anti-Drag™ Steels and Red Eagle® Frictions.

Alto products are distributed by a worldwide network of professional parts distributors. If your distributor does not stock Alto Red Eagle® Performance parts, contact us and we will put you in touch with one that does.



RED EAGLE® BENEFITS:

- Lessened friction material wear
- Reduced incidence of steel plates burning and warping
- Increased surface area for decreased "slipping"
- Increased holding
- Decreased heat generation



DON'T JUST TAKE OUR WORD FOR IT.

Look at what performance professionals are saying...

A & A TRANSMISSION:



"R & D of the Torque Flight has breathed new life, durability and strength into this transmission, thanks to Red Eagle® clutches and Kolene® steels."

— Rick Allison, World's Fastest Torque Flight

DYNAMIC RACING TRANSMISSIONS:



"For over a decade, Dynamic Racing has used Alto in specialized racing applications. Red Eagle® clutches and Kolene® steels are key elements in our high horsepower Pro-Tree II Glides."

— Harold Miller

HUGHES PERFORMANCE:



"With the advanced horsepower in racing, there is the need for a superior transmission. That's why I use and recommend Red Eagle® clutches and Kolene® steels."

— Jim Hughes, Super Comp NW National Champ

LEVEL 10:



"With over 30 years of experience using different brands of clutches, I find the Red Eagle® clutch is without a doubt the best on the market."

— Pat Barrett

PERFORMANCE AUTOMATIC TRANSMISSIONS:



"For over 15 years we've been building the fastest C-4 transmissions in the country. Our customers demand the best clutch plates money can buy and the Red Eagle® clutches have withstood all the punishment."

— Tom Cyr

TRANSMISSION SPECIALTIES:



"We use Alto in the assembly of all Hi-Performance transmissions we manufacture. Red Eagle® clutches and Kolene® steels have the durability and consistency necessary to withstand tough demands expected of a quality Hi-Performance transmission."

— Peter Miller

TPI PERFORMANCE TRANSMISSIONS:



"We have a 1958 Corvette 2500HP, 526 Supercharge and a Lenco 3-speed. We use only Red Eagle® clutches and our best time is 6.19-200mph. We get over 100 passes a season. It's the only clutch we use or sell."

— Bill Hyzy

TSR RACING PRODUCTS:



"For the utmost in performance and reliability we install Red Eagle® clutches and Kolene® steels in every unit."

— Carl Munroe, National SuperRod Runner-Up

OEI® Products from Alto...

Powerpacks®

General Motors

019755HPPowerglide Front Hi-Perf 62-73
019756Powerglide High Cl Hi-Perf 62-73
019757Powerglide Front Anti-Drag Hi-Perf 62-73
019758Powerglide Reverse Anti-Drag Hi-Perf 62-73
031755HPTH400 Forward Hi-Perf 64-95
031756HPTH400 Direct Hi-Perf 64-95
031757HPTH400 Intermed Hi-Perf 64-95
031755AHP4L80E Forward Hi-Perf 90+
031756HP4L80E Direct Hi-Perf 90+
031757AHP4L80E Intermed Hi-Perf 90+
043757TH200, 200C, 4R Direct Hi-Perf 76-90
057757BTH700-R4 3-4 Clutch 82+
057757BHPTH700-R4 3-4 Cl Hi-Perf 82+
057757CTH700-R4 3-4 Clutch K2® 82+
0627594T65E 2nd, 3rd & Forward Clearance Pack

Ford

025755AC-4 Reverse Hi-Perf 64-81
025755C-5 Reverse Hi-Perf 82-86
026755C-6, 4R100 Forward Hi-Perf 66+
026757C-6, E4OD Direct 66+
026759E4OD Clearance Pack 89+
041756A4LD Reverse/High Cl 85+
049750AAOD Direct Cl 80-91
049750AHPAOD Direct Cl Hi-Perf 80-91
049754AAOD-E Direct GROB 91+
049754AHPAOD-E Direct GROB Hi-Perf 91+
049756HPAOD, AOD-E Intermed Hi-Perf 80+
049758AOD Reverse 80-91
049758AAOD, AOD-E Reverse GROB Hi-Perf 91+
1667565R110W Forward 03-04
166756A5R110W Forward 05+
1667575R110W Direct 03+

Chrysler

045755A413, A470, A670 Forward Hi-Perf 81+
045756A413, A470, A670 Reverse Hi-Perf 81+
077757A604, A606 Overdrive Hi-Perf 90-96
077757AA604, A606 Overdrive Hi-Perf 97+

Mitsubishi

108754F4A Direct Hi-Perf 91+
059935PWRKM Series Overdrive
Seal Kit and "Anti-Warp" Clutches 79+

Nissan

174756RE5R05A Input Hi-Perf 02+
174757RE5R05A Direct Hi-Perf 02+

ZF

053755ZF3HP22, ZF4HP22 A Clutch 76-94
053758ZF4HP22 E Clutch Overdrive 76-94

ShaftSavers®

General Motors

062758TH440-T4 4th Clutch 83-93
062758A4T60E 4th Clutch 87-92
062758B4T60E 4th Clutch 93+

Powerbands®

General Motors - Powerglide

019961Front Wide Red Eagle® Heavy Duty 55-73
019961CFront Wide Carbonite® Super Duty 55-73

General Motors - TH700-R4, 4L60, E

057961Wide Red Eagle® Heavy Duty 82+
057961CWide Carbonite® Super Duty 82+

General Motors - TH200, 200C

043961Wide Red Eagle® Heavy Duty 76-90
043961KWide Kevlar® Super Duty 76-90

Ford - C-6

026968Front Wide Red Eagle® Heavy Duty 66-96
026968KFront Wide Kevlar® Super Duty 66-96

Chrysler - A404, A413, A670

045963Kickdown Wide Red Eagle Heavy Duty 78+
045963CKickdown Wide Carbonite® Super Duty 78+

Nissan - RE4R01A

075961C2-4 Wide Carbonite® Super Duty 87+

DrumSavers®

General Motors

0577584L60 Reverse Input 87+

Nissan/Mazda/Subaru

105757XNissan RE4F04A Reverse 92+
068758Nissan RE4F02A Reverse 85-96
075758Nissan/Mazda RE4R01A Reverse 88-92
075758ANissan/Mazda RE4R01A Reverse 93+
075757HPNiss/Maz/Sub RE4R01A High Cl Hi-Perf 92+
074705XWMazda Reverse Wave Spring 86+
081755Mazda 4EAT-F Forward 90-99

Renault

109757BAR-4, AD-8 3-4 Clutch 88+

Volkswagen

10975701M, 01N 3-4 Clutch 96+
109757A01P 3-4 Clutch 96+
162757Jatco JF506E Low 02+

CaseSavers®

General Motors

019300UP6Powerglide Reverse Case
Saver Clips (6 per Pack) 62-73

Allison

055758AT540 Series 2nd Range Case Saver Kit 70+
055758AAT540 Series 3rd Range Case Saver Kit 70+

Chrysler

077758A604, A606 Low/Reverse Clutch Pack
With Case Saver Clips 90+

HI-PERFORMANCE PRODUCTS

LENCO RACING VARIOUS MODELS & YEARS

Friction Clutches - Red Eagle®

ALTO No.	Description	Spec	Year	Qty	Notes
011740	Gasket, Front Pump to Case	.098/2.5	ALL	AR	Red Eagle® - 51T - OD: 5.318" - SM
023744	Friction - 45 tooth design	.063/1.6	ALL	AR	Red Eagle® - 45T - OD: 5.251" - WF
023744A150	Friction - 45 tooth design	.059/1.5	ALL	AR	Carbonite® - 45T - OD: 5.251" - WF
028742	Friction - 62 tooth design	.063/1.6	ALL	AR	Red Eagle® - 62T - OD: 6.700" - SM
028742A155	Friction - 62 tooth design	.063/1.6	ALL	AR	Red Eagle® - 62T - OD: 6.700" - PL

Friction Clutch Unit Packs (One Rebuild)

ALTO No.	Description	Spec	Year	Qty	Notes
023744UP10	UNIT PACK - Friction 45 tooth design	.098/2.58	ALL	1	10 Red Eagle® Friction

Steel Clutches & Kolene® Clutches

ALTO No.	Description	Spec	Year	Qty	Notes
021701	Steel - use with 011740	.065/1.65	ALL	AR	8T - ID: 4.070"
021701-183	Steel - use with 011740	.072/1.83	ALL	AR	8T - ID: 4.070"
023745	Steel - use with 023744	.065/1.65	ALL	AR	56T - ID: 3.900"
028743	Steel - use with 028742	.056/1.42	ALL	AR	68T - ID: 5.340"

GM POWERGLIDE ALUMINUM CASE 1962-73

Master Kits

ALTO No.	Description	Year	Notes
019901HP	Master Kit - Red Eagle®	62-73	1-019800HP, 1-019752HP, 1-019753HP
019901HPH	Master Kit - Red Eagle® w/Turbulator Front Steels	62-73	1-019800HP, 1-019752HP, 1-019753HPH
019901AHP	Master Kit - Red Eagle® w/Front PowerPack®	62-73	1-019800HP, 1-019750D
019901AHPH	Master Kit - Red Eagle® w/ Turbulator Front PowerPack®	62-73	1-019800HP, 1-019750C
019901C	Master Kit - Hi-Energy w/ Front PowerPack®	62-73	1-019800HP, 1-019750E

Banner Kits

ALTO No.	Description	Year	Notes
019901HPLS	Banner Kit	62-73	1-019800HP, 1-019752HP

Overhaul Kits

ALTO No.	Description	Year	Notes
019800HP	Overhaul Kit - with Farpak Gasket and Teflon Rings	62-73	

Gasket

ALTO No.	Description	Spec	Year	Qty	Notes
019816HP	Gasket, Oil Pan		62-73	1	Select - A - Seal
019003	Gasket, Output/Governor		67-73	1	

Friction & Steel Modules

ALTO No.	Description	Year	Notes
019750D	Friction/Steel Module w/Front PowerPack®	62-73	Red Eagle® Frictions & Kolene® Steels
019750C	Friction/Steel Module w/Turbulator Front PowerPack®	62-73	Red Eagle® Frictions & Kolene® Steels
019750E	Friction/Steel Module w/Front PowerPack®	62-73	Hi-Energy Frictions & Kolene® Steels

Friction Modules

HI-PERFORMANCE PRODUCTS

GM POWERGLIDE ALUMINUM CASE 1962-73

Friction Modules

ALTO No.	Description	Year	Notes
019752HP	Friction Module	62-73	Red Eagle® Frictions

Steel Modules

ALTO No.	Description	Year	Notes
019753HP	Steel Module	62-73	Kolene® Steels
019753HPH	Steel Module w/ Turbulator Front Steels	62-73	Kolene® Steels

Friction Clutches - Red Eagle®

ALTO No.	Description	Spec	Year	Qty	Notes
019740	Front	.098	62-73	3-5	Red Eagle® - 43T - OD: 5.062" - SM
019740PL	Front	.098	62-73	3-5	Red Eagle® - 43T - OD: 5.062" - PL
018708A250	Front - Carbonite®	.098	62-73	3-5	Carbonite® - 43T - OD: 5.062" - PL
019740WF	Front	.098	62-73	3-5	Red Eagle® - 43T - OD: 5.062" - WF
019740BR	Front - Bronze	.098	62-73	3-5	Brz - 43T - OD: 5.062" - SB
019740A	Front - PowerPack® Component	.061	62-73	AR	Red Eagle® - 43T - OD: 5.062" - SM
019740AK	Front - PowerPack® Component	.061	62-73	AR	Kevlar® - 43T - OD: 5.062" - SM
019740APL	Front - PowerPack® Component	.061	62-73	AR	Red Eagle® - 43T - OD: 5.062" - PL
019740B155	Front - PowerPack® Component	.061	62-73	AR	Red Eagle® - 43T - OD: 5.062" - WF
019740D155	Front - Carbonite® thin	.061	62-73	AR	Carbonite® - 43T - OD: 5.062" - SM
019744A170	Front - Red Eagle® PowerPack® Component 1 side friction internal spline	.067	62-73	AR	Red Eagle® - 43T - OD: 5.064" - WF
019743A170	Front - Red Eagle® PowerPack® Component 1 side friction external spline	.067	62-73	AR	Red Eagle® - 12T - ID: 3.874" - WF
032744	Reverse	.098	62-73	5	Red Eagle® - 25T - OD: 6.461" - SM

Friction Clutch Unit Packs (One Rebuild)

ALTO No.	Description	Spec	Year	Qty	Notes
019740UP5	Front clutch Frictions	.098	62-73	1	5 Red Eagle® Friction
019740BRUP5	Front clutch Frictions - bronze	.098	62-73	1	5 Bronze Friction
019740AUP8	Front clutch Frictions - thin	.061	62-73	1	8 Red Eagle® Friction
032744UP5	Reverse clutch Frictions	.098	62-73	1	5 Red Eagle® Friction

Steel Clutches & Kolene® Clutches

ALTO No.	Description	Spec	Year	Qty	Notes
019701A	Front - thin	.060	62-73	AR	12T - ID: 3.874"
019701-100	Front - selective	.040	62-73	AR	12T - ID: 3.874"
019701K	Front	.070	62-73	3-5	Kolene® - 12T - ID: 3.874"
019701HK	Front with Turbulator Holes	.070	62-73	3-5	Kolene® - 12T - ID: 3.874"
019701AK	Front - thin	.060	62-73	AR	Kolene® - 12T - ID: 3.874"
019701AHK	Front - thin with Turbulator Holes	.060	62-73	AR	Kolene® - 12T - ID: 3.874"
019703K	Reverse	.070	62-73	4-6	Kolene® - 6T - ID: 5.727"
019703K150	Reverse - selective	.060	62-73	AR	Kolene® - 6T - ID: 5.727"
019703-150	Reverse - selective	.060	62-73	AR	6T - ID: 5.727"
019703K200	Reverse - selective	.078	62-73	AR	Kolene® - 6T - ID: 5.727"
019703-200	Reverse - selective	.078	62-73	AR	6T - ID: 5.727"
019703K228	Reverse - selective	.090	62-73	AR	Kolene® - 6T - ID: 5.727"
019703-228	Reverse - selective	.090	62-73	AR	6T - ID: 5.727"
019703K254	Reverse - selective	.100	62-73	AR	Kolene® - 6T - ID: 5.727"
019703-254	Reverse - selective	.100	62-73	AR	6T - ID: 5.727"
019703K280	Reverse - selective	.110	62-73	AR	Kolene® - 6T - ID: 5.727"
019703-280	Reverse - selective	.110	62-73	AR	6T - ID: 5.727"

HI-PERFORMANCE PRODUCTS

GM POWERGLIDE ALUMINUM CASE 1962-73

Steel Clutch Unit Packs (One Rebuild)

ALTO No.	Description	Spec	Year	Qty	Notes
019701KUP5	Front Clutch Steels	.070	62-73	1	5 Kolene® Steel
019701AKUP8	Front Clutch Steels - thin	.060	62-73	1	8 Kolene® Steel
019703KUP5	Reverse	.070	62-73	1	5 Kolene® Steel

OEI® Original Equipment Improvements

ALTO No.	Description	Spec	Year	Qty	Notes
019300UP6	Kit, Reverse Case Saver™ Clips		62-73	1	Contains 6 Clips
019756A	Front Clutch PowerPack® Hi-Performance 1 side frictions		62-73	1	Red Eagle® Frictions & 1 Kolene® Steel
019755HP	Front Clutch PowerPack® Hi-Performance		62-73	1	Red Eagle® Frictions & Kolene® Steels
019756	Front Clutch PowerPack® - inertia		62-73	1	Red Eagle® Frictions & Kolene® Steels
019711KUP1	Front - Kolene w/ 6 separators	.070	62-73	1	1 Kolene® Steel
019757	Front Clutch Anti-Drag PowerPack®		62-73	1	Red Eagle® Frictions & Kolene® Steels
019758	Reverse Clutch Anti-Drag PowerPack®		62-73	1	Red Eagle® Frictions & Kolene® Steels
019713KUP1	Reverse - Kolene w/ 6 separators	.070	62-73	1	1 Kolene® Steel

Pressure Plates

ALTO No.	Description	Spec	Year	Qty	Notes
019761A800	Reverse	.317	62-73	1	6T - ID: 5.719"

Bands - Red Eagle® or Carbonite®

ALTO No.	Description	Spec	Year	Qty	Notes
019960	Band Low Brake - Split Red Eagle®	Red	62-73	1	Red Eagle®
019960C	Band Low Brake - Split Super Duty Carbonite®	Crb	62-73	1	Carbonite®
019961	Band Low Brake - Split Heavy Duty 2.245" Wide - Offset Lugs	Red	62-73	1	Red Eagle®
019961K	Band Low Brake - Split Super Duty 2.245" Wide - Offset Lugs	Kev	62-73	1	Kevlar®
019961C	Band Low Brake - Split Super Duty 2.245" Wide - Offset Lugs	Crb	62-73	1	Carbonite®

Filters

ALTO No.	Description	Spec	Year	Qty	Notes
019942A	Filter - square		62-73	1	

Bushings

ALTO No.	Description	Spec	Year	Qty	Notes
019203X	Bushing - rear case heavy duty .250" wider	Bronze	62-73	1	

Sealing Rings

ALTO No.	Description	Spec	Year	Qty	Notes
018101X	Front Pump stator to Front drum	Chrome	62-73	2	
018101T	Front Pump stator to Front drum	Teflon	62-73	2	
018102X	Input shaft	Chrome	62-73	2	
018102T	Input shaft	Teflon	62-73	2	

HI-PERFORMANCE PRODUCTS

GM TH125, TH125C (3T40)

1980-On

Master Kits

ALTO No.	Description	Year	Notes
048901HP	Master Kit	80-84	1-048800, 1-048752HP, 1-048753HP
048903HP	Master Kit	85-On	1-048802, 1-048752AHP, 1-048753AHP

Banner Kits

ALTO No.	Description	Year	Notes
048901HPLS	Banner Kit	80-84	1-048800, 1-048752HP
048903HPLS	Banner Kit	85-On	1-048800, 1-048752HP

Overhaul Kits

ALTO No.	Description	Year	Notes
048800	Overhaul Kit	80-84	
048802	Overhaul Kit	85-On	

Friction Modules

ALTO No.	Description	Year	Notes
048752HP	Friction Module	80-84	Red Eagle® Frictions
048752AHP	Friction Module	85-On	Red Eagle® Frictions

Steel Modules

ALTO No.	Description	Year	Notes
048753HP	Steel Module	80-84	Kolene® Steels
048753AHP	Steel Module	85-On	Kolene® & Regular Steels

Friction Clutches - Red Eagle®

ALTO No.	Description	Spec	Year	Qty	Notes
048740	Forward & Direct	.080	80-84	4	Red Eagle® - 32T - OD: 4.643" - SM
048742	Low/Reverse	.080	80-84	5	Red Eagle® - 40T - OD: 5.372" - SM
048744	Forward & Direct	.069	85-On	4-5	Red Eagle® - 32T - OD: 4.643" - SM
048746	Low/Reverse	.090	85-On	5	Red Eagle® - 40T - OD: 5.372" - SM

Friction Clutch Unit Packs (One Rebuild)

ALTO No.	Description	Spec	Year	Qty	Notes
048740UP4	UNIT PACK - Forward & Direct	.080	80-84	1	4 Red Eagle® Friction
048742UP5	UNIT PACK - Low/Reverse	.080	80-84	1	5 Red Eagle® Friction

Steel Clutches & Kolene® Clutches

ALTO No.	Description	Spec	Year	Qty	Notes
048701K	Forward	.076	80-On	3-4	Kolene® - 26T - ID: 3.517"
048703K	Direct	.090	80-On	4	Kolene® - 24T - ID: 3.517"
048705K	Low/Reverse	.080	80-84	5	Kolene® - 11T - ID: 4.375"

Steel Clutch Unit Packs (One Rebuild)

ALTO No.	Description	Spec	Year	Qty	Notes
048701KUP3	UNIT PACK - Forward	.076	80-On	1	3 Kolene® Steel
048703KUP4	UNIT PACK - Direct	.090	80-On	1	4 Kolene® Steel
048705KUP5	UNIT PACK - Low/Reverse	.080	80-84	1	5 Kolene® Steel

Bands - Red Eagle® or Kevlar®

ALTO No.	Description	Spec	Year	Qty	Notes
048961	Intermediate (Flex)	1.750	82-On	1	

HI-PERFORMANCE PRODUCTS

GM TH180, TH180C (3L30)

1969-98

Master Kits

ALTO No.	Description	Year	Notes
038905HP	Master Kit	69-On	1-038800, 1-038752AHP, 1-038753AHP

Banner Kits

ALTO No.	Description	Year	Notes
038905HPLS	Banner Kit	69-On	1-038800, 1-038752AHP

Overhaul Kits

ALTO No.	Description	Year	Notes
038800	Overhaul Kit	69-On	

Friction Modules

ALTO No.	Description	Year	Notes
038752AHP	Friction Module	69-On	Red Eagle® Frictions

Steel Modules

ALTO No.	Description	Year	Notes
038753AHP	Steel Module	69-On	Kolene® Steels

Friction Clutches - Red Eagle®

ALTO No.	Description	Spec	Year	Qty	Notes
038740	3rd Clutch	.098	69-98	2-5	Red Eagle® - 12T - OD: 3.872" - SM
038742	2nd Clutch	.098	69-98	2-5	Red Eagle® - 30T - OD: 5.224" - SM
038744	Reverse Clutch	.098	69-98	2-5	Red Eagle® - 36T - OD: 6.405" - SM

Friction Clutch Unit Packs (One Rebuild)

ALTO No.	Description	Spec	Year	Qty	Notes
038740UP6	UNIT PACK - 3rd Clutch	.098	69-98	1	6 Red Eagle® Friction
038742UP6	UNIT PACK - 2nd Clutch	.098	69-98	1	6 Red Eagle® Friction
038744UP6	UNIT PACK - Reverse Clutch	.098	69-98	1	6 Red Eagle® Friction

Steel Clutches & Kolene® Clutches

ALTO No.	Description	Spec	Year	Qty	Notes
038701K	3rd Clutch	.083	69-98	3-6	Kolene® - 30T - ID: 2.848"
038703K	2nd Clutch	.080	69-98	3-6	Kolene® - 36T - ID: 4.303"
038705K	Reverse Clutch	.083	69-98	3-6	Kolene® - 7T - ID: 5.679"

Steel Clutch Unit Packs (One Rebuild)

ALTO No.	Description	Spec	Year	Qty	Notes
038701KUP6	UNIT PACK - 3rd Clutch	.083	69-98	1	6 Kolene® Steel
038703KUP6	UNIT PACK - 2nd Clutch	.080	69-98	1	6 Kolene® Steel
038705KUP6	UNIT PACK - Reverse Clutch	.083	69-98	1	6 Kolene® Steel

HI-PERFORMANCE PRODUCTS

GM TH200, TH200C 1976-87
TH200-4R 1981-90

Master Kits

ALTO No.	Description	Year	Notes
043901HP	Master Kit - TH200, C	76-87	1-043800, 1-043752HP, 1-043753HP
043907HP	Master Kit - TH200-4R	81-90	1-043804, 1-043752AHP, 1-043753AHP

Banner Kits

ALTO No.	Description	Year	Notes
043901HPLS	Banner Kit - TH200, C	76-87	1-043800, 1-043752HP
043907HPLS	Banner Kit - TH200-4R	81-90	1-043804, 1-043752AHP

Overhaul Kits

ALTO No.	Description	Year	Notes
043800	Overhaul Kit - TH200, C	76-87	
043804	Overhaul Kit - TH200-4R	81-90	

Friction Modules

ALTO No.	Description	Year	Notes
043752HP	Friction Module - TH200, C	76-87	Red Eagle® Frictions
043752AHP	Friction Module - TH200-4R	81-90	Red Eagle® Frictions

Steel Modules

ALTO No.	Description	Year	Notes
043753HP	Steel Module - TH200, C	76-87	Kolene® Steels
043753AHP	Steel Module TH200-4R	81-90	Kolene® Steels

Friction Clutches - Red Eagle®

ALTO No.	Description	Spec	Year	Qty	Notes
043740	Forward & Direct	.078	76-90	3-6	Red Eagle® - 30T - OD: 5.226" - SM
043740PL	Forward & Direct	.078	76-90	3-6	Red Eagle® - 30T - OD: 5.226" - PL
043740A	Forward & Direct (thin)	.061	76-90	AR	Red Eagle® - 30T - OD: 5.226" - SM
043742	Low/Reverse	.078	76-90	4-6	Red Eagle® - 44T - OD: 5.529" - SM
043746	Overdrive (4th) Clutch	.080	81-90	2	Red Eagle® - 36T - OD: 6.886" - SM
043748	Overrun	.080	81-90	2	Red Eagle® - 40T - OD: 5.095" - SB

Friction Clutch Unit Packs (One Rebuild)

ALTO No.	Description	Spec	Year	Qty	Notes
043740UP6	UNIT PACK - Forward or Direct	.078	76-90	1	6 Red Eagle® Friction
043740AUP8	UNIT PACK - Forward or Direct (thin)	.061	76-90	1	8 Red Eagle® Friction
043742UP6	UNIT PACK - Low/Reverse	.078	76-90	1	6 Red Eagle® Friction
043746UP2	UNIT PACK - Overdrive (4th) Clutch	.080	81-90	1	2 Red Eagle® Friction
043748UP2	UNIT PACK - Overrun	.080	81-90	1	2 Red Eagle® Friction

Steel Clutches & Kolene® Clutches

ALTO No.	Description	Spec	Year	Qty	Notes
043701K	Forward	.078	76-90	2-3	Kolene® - 30T - ID: 4.340"
043701AK	Forward (thin)	.060	76-90	AR	Kolene® - 30T - ID: 4.340"
043703K	Direct	.090	76-90	3-6	Kolene® - 26T - ID: 4.340"
043717K	Direct - oversized	.101	76-90	AR	Kolene® - 30T - ID: 4.340"
043705K	Low/Reverse	.077	76-90	5-7	Kolene® - 22T - ID: 4.690"
043713K	Overdrive (4th) Clutch	.080	81-90	3	Kolene® - 6T - ID: 5.844"
043715K	Overrun	.080	81-90	2	Kolene® - 36T - ID: 3.959"

Steel Clutch Unit Packs (One Rebuild)

HI-PERFORMANCE PRODUCTS

GM TH200, TH200C 1976-87
TH200-4R 1981-90

Steel Clutch Unit Packs (One Rebuild)

ALTO No.	Description	Spec	Year	Qty	Notes
043701KUP3	UNIT PACK - Forward	.078	76-90	1	3 Kolene® Steel
043701AKUP8	UNIT PACK - Forward (thin)	.060	76-90	1	8 Kolene® Steel
043703KUP6	UNIT PACK - Direct	.090	76-90	1	6 Kolene® Steel
043705KUP7	UNIT PACK - Low/Reverse	.077	76-90	1	7 Kolene® Steel
043713KUP3	UNIT PACK - Overdrive (4th) Clutch	.080	81-90	1	3 Kolene® Steel
043715KUP2	UNIT PACK - Overrun	.080	81-90	1	2 Kolene® Steel

OEI® Original Equipment Improvements

ALTO No.	Description	Spec	Year	Qty	Notes
043757	PowerPack® - Direct Clutch		76-90	1	Red Eagle® Frictions & Kolene® Steels
057501	Retainer, Front pump seal		76-90	1	Prevents front seal pop-out

Bands - Red Eagle® or Carbonite®

ALTO No.	Description	Spec	Year	Qty	Notes
043960	Intermediate (Flex)	Red	76-90	1	Red Eagle®
043961	Intermediate (Flex) Heavy Duty PowerBand®	Red	76-90	1	Red Eagle®
043961C	Intermediate (Flex) Super Duty PowerBand®	Crb	76-90	1	Carbonite®
	Note: 043961 & 043961C have Enhanced Heat Treated Anchors. The Case anchor is thicker and the Servo anchor is reinforced.				
043962	Intermediate (Flex) Heavy Duty PowerBand® with wedge in Servo anchor (old style)	Red	76-90	1	Red Eagle®
043962C	Intermediate (Flex) Super Duty PowerBand® with wedge in Servo anchor (old style)	Crb	76-90	1	Carbonite®

GM TH350/C 1969-86
TH250C 1980-84

Master Kits

ALTO No.	Description	Year	Notes
032905HP	Master Kit	69-86	1-032804HP, 1-032752HP, 1-032753HP

Banner Kits

ALTO No.	Description	Year	Notes
032905HPLS	Banner Kit	69-86	1-032804HP, 1-032752HP

Overhaul Kits

ALTO No.	Description	Year	Notes
032804HP	Overhaul Kit - w/Farpak Gasket & Teflon Rings	69-86	

Friction Modules

ALTO No.	Description	Year	Notes
032752HP	Friction Module	69-86	Red Eagle® Frictions

Steel Modules

ALTO No.	Description	Year	Notes
032753HP	Steel Module	69-86	Kolene® Steels

Friction Clutches - Red Eagle®

HI-PERFORMANCE PRODUCTS

GM TH350/C 1969-86

TH250C 1980-84

Friction Clutches - Red Eagle®

ALTO No.	Description	Spec	Year	Qty	Notes
032742	Forward & Direct	.098	69-86	4/5	Red Eagle® - 20T - OD: 5.920" - SM
032742PL	Forward & Direct	.098	69-86	4/5	Red Eagle® - 20T - OD: 5.920" - PL
032740	Intermediate	.098	69-86	3	Red Eagle® - 60T - OD: 7.444" - SM
032740PL	Intermediate	.098	69-86	3	Red Eagle® - 60T - OD: 7.444" - PL
032744	Low/Reverse	.098	69-86	5	Red Eagle® - 25T - OD: 6.461" - SM
032744SB	Low/Reverse	.098	69-86	5	Red Eagle® - 25T - OD: 6.461" - SB

Friction Clutches - Hi-Energy

ALTO No.	Description	Spec	Year	Qty	Notes
030702WF	Low/Reverse	.098	69-86	5	Heg - 25T - OD: 6.461" - WF

Friction Clutch Unit Packs (One Rebuild)

ALTO No.	Description	Spec	Year	Qty	Notes
032742UP9	UNIT PACK - Forward & Direct	.098	69-86	1	9 Red Eagle® Friction
032740UP3	UNIT PACK - Intermediate	.098	69-86	1	3 Red Eagle® Friction
032744UP5	UNIT PACK - Low/Reverse	.098	69-86	1	5 Red Eagle® Friction

Steel Clutches & Kolene® Clutches

ALTO No.	Description	Spec	Year	Qty	Notes
032705K	Forward & Direct	.068	69-86	5/4	Kolene® - 12T - ID: 4.863"
032705HK	Forward & Direct with Turbulator holes	.068	69-86	5/4	Kolene® - 12T - ID: 4.863"
032703K	Intermediate	.068	69-86	2-3	Kolene® - 7T - ID: 6.175"
032703K	Intermediate	.068	69-86	2-3	Kolene® - 7T - ID: 6.175"
032701K	Low/Reverse	.068	69-86	5	Kolene® - 17T - ID: 5.727"
032701HK	Low/Reverse with Turbulator holes	.068	69-86	5	Kolene® - 17T - ID: 5.727"

Steel Clutch Unit Packs (One Rebuild)

ALTO No.	Description	Spec	Year	Qty	Notes
032705KUP9	UNIT PACK - Forward & Direct	.068	69-86	1	9 Kolene® Steel
032703KUP3	UNIT PACK - Intermediate	.068	69-86	1	3 Kolene® Steel
032701KUP5	UNIT PACK - Low/Reverse	.068	69-86	1	5 Kolene® Steel
032701HKUP5	UNIT PACK - Low/Reverse with Turbulator holes	.068	69-86	1	5 Kolene® Steel

Bands - Red Eagle® or Kevlar®

ALTO No.	Description	Spec	Year	Qty	Notes
032960	Intermediate	Red	69-86	1	Red Eagle®
032960K	Intermediate	Kev	69-86	1	Kevlar®

HI-PERFORMANCE PRODUCTS

GM TH400, 375 (3L80) 1964-95

TH425, 475 1966-78

Master Kits

ALTO No.	Description	Year	Notes
031901HP	Master Kit - w/Turbulator steels	65-95	1-031800HP, 1-031752HP, 1-031753HP
031901HPPWR	Master Kit - w/Turbulator steels and Intermediate PowerPack®	65-95	1-031800HP, 1-031750AHPWR

Banner Kits

ALTO No.	Description	Year	Notes
031901HPLS	Banner Kit	65-95	1-031800HP, 1-031752HP

Overhaul Kits

ALTO No.	Description	Year	Notes
031800HP	Overhaul Kit - w/Farpak Gasket & Teflon Rings	65-95	

Friction & Steel Modules

ALTO No.	Description	Year	Notes
031750AHPWR	Friction & Steel Module - w/Turbulator Steels & Intermediate PowerPack®	65-95	Red Eagle® Frictions & Kolene® Steels

Friction Modules

ALTO No.	Description	Year	Notes
031752HP	Friction Module	65-95	Red Eagle® Frictions

Steel Modules

ALTO No.	Description	Year	Notes
031753HP	Steel Module	65-95	Kolene® Steels

Friction Clutches - Red Eagle® & Kevlar®

ALTO No.	Description	Spec	Year	Qty	Notes
031740	Forward & Direct	.080	65-95	10	Red Eagle® - 42T - OD: 5.901" - SM
031740PL	Forward & Direct	.080	65-95	10	Red Eagle® - 42T - OD: 5.901" - PL
031740A	Forward & Direct	.061	65-95	AR	Red Eagle® - 42T - OD: 5.901" - SM
031740AK	Forward & Direct	.061	65-95	AR	Kevlar® - 42T - OD: 5.901" - SM
031742	Intermediate	.080	65-95	3	Red Eagle® - 47T - OD: 6.561" - SM
031742PL	Intermediate	.080	65-95	3	Red Eagle® - 47T - OD: 6.561" - PL
031742A	Intermediate	.060	65-95	AR	Red Eagle® - 47T - OD: 6.561" - SM
031742AK	Intermediate	.060	65-95	AR	Kevlar® - 47T - OD: 6.561" - SM

Friction Clutch Unit Packs (One Rebuild)

ALTO No.	Description	Spec	Year	Qty	Notes
031740UP5	UNIT PACK - Forward or Direct	.080	65-95	1	5 Red Eagle® Friction
031740AUP6	UNIT PACK - Forward or Direct	.061	65-95	1	6 Red Eagle® Friction
031742UP3	UNIT PACK - Intermediate	.080	65-95	1	3 Red Eagle® Friction
031742AUP5	UNIT PACK - Intermediate	.060	65-95	1	5 Red Eagle® Friction

Steel Clutches & Kolene® Clutches

ALTO No.	Description	Spec	Year	Qty	Notes
031701K	Forward & Direct - wave	.068	64-95	5/4	Kolene® - 12T - ID: 4.585"
031701HK	Forward & Direct - wave with Turbulator holes	.068	64-95	5/4	Kolene® - 12T - ID: 4.585"
031703K	Forward - flat	.077	65-95	4	Kolene® - 12T - ID: 4.585"
031711K	Forward & Direct	.090	68-95	4	Kolene® - 12T - ID: 4.575"
031711HK	Forward & Direct with Turbulator holes	.090	68-95	4	Kolene® - 12T - ID: 4.575"
031701AK	Forward & Direct - PowerPack® component	.060	65-95	AR	Kolene® - 12T - ID: 4.585"

HI-PERFORMANCE PRODUCTS

GM TH400, 375 (3L80) 1964-95

TH425, 475 1966-78

Steel Clutches & Kolene® Clutches

ALTO No.	Description	Spec	Year	Qty	Notes
031705K	Intermediate	.100	65-95	3	Kolene® - 21T - ID: 5.000"
031705HK	Intermediate with Turbulator holes	.100	65-95	3	Kolene® - 21T - ID: 5.000"
031705K160	Intermediate	.063	65-95	AR	Kolene® - 21T - ID: 5.000"
031715K	Intermediate - PowerPack® component	.076	65-95	AR	Kolene® - 21T - ID: 5.000"
031715HK	Intermediate - PowerPack® component	.076	65-95	AR	Kolene® - 21T - ID: 5.000"

Steel Clutch Unit Packs (One Rebuild)

ALTO No.	Description	Spec	Year	Qty	Notes
031701AKUP6	UNIT PACK - Forward & Direct	.060	64-95	1	6 Kolene® Steel
031703KUP4	UNIT PACK - Forward & Direct	.077	65-95	1	4 Kolene® Steel
031711KUP5	UNIT PACK - Forward & Direct	.090	68-95	1	5 Kolene® Steel
031705KUP3	UNIT PACK - Intermediate	.100	64-95	1	3 Kolene® Steel
031705K160UP5	UNIT PACK - Intermediate	.063	64-95	1	5 Kolene® Steel

OEI® Original Equipment Improvements

ALTO No.	Description	Spec	Year	Qty	Notes
031755HP	PowerPack® - Forward clutch		64-95	1	Red Eagle® & Kolene®
031756HP	PowerPack® - Direct Clutch		64-95	1	Red Eagle® & Kolene®
031757	PowerPack® - Intermediate Clutch		64-95	1	Tan Frictions
031757HP	PowerPack® - Intermediate Clutch		64-95	1	Red Eagle® & Kolene®

Bands - Red Eagle® or Carbonite®

ALTO No.	Description	Spec	Year	Qty	Notes
031960	Front Band	Red	64-95	1	Red Eagle®
031960K	Front Band	Kev	64-95	1	Kevlar®
031952C	Rear Band	Crb	64-95	1	Carbonite®

GM 4L80E

1990-On

Master Kits

ALTO No.	Description	Year	Notes
031903HP	Master Kit - w/Turbulator steels	90-96	1-031804HP, 1-031752AHP, 1-031753AHP
031903AHP	Master Kit - w/Turbulator steels	97-On	1-031804AHP, 1-031752BHP, 1-031753AHP

Banner Kits

ALTO No.	Description	Year	Notes
031903HPLS	Banner Kit	90-96	1-031804HP, 1-031752AHP
031903AHPLS	Banner Kit	97-On	1-031804AHP, 1-031752BHP

Overhaul Kits

ALTO No.	Description	Year	Notes
031804HP	Overhaul Kit - Farpak Gsk, Teflon Rings	90-96	
031804AHP	Overhaul Kit - Farpak Gsk	97-On	

Friction & Steel Modules

ALTO No.	Description	Year	Notes
031750AHP	Friction/Steel Module	90-96	Red Eagle® Frictions & Kolene® Steels
031750BHP	Friction/Steel Module	97-On	Red Eagle® Frictions & Kolene® Steels

HI-PERFORMANCE PRODUCTS

GM 4L80E

1990-On

Friction Modules

ALTO No.	Description	Year	Notes
031752AHP	Friction Module	90-96	Red Eagle® Frictions
031752BHP	Friction Module	97-On	Red Eagle® Frictions

Steel Modules

ALTO No.	Description	Year	Notes
031753AHP	Steel Module	90-On	Kolene® Steels

Friction Clutches - Red Eagle®

ALTO No.	Description	Spec	Year	Qty	Notes
031740	Forward / Direct	.080	90-On	5/5	Red Eagle® - 42T - OD: 5.893" - SM
031744-200	Intermediate	.080	90-96	4	Red Eagle® - 47T - OD: 6.561" - SM
031714K180	Intermediate	.071	97-On	4	Kevlar® - 47T - OD: 6.561" - SM
031746-200	Overrun (4th)	.080	90-On	3	Red Eagle® - 45T - OD: 5.374" - PLI
031748-200	Overdrive (4th)	.080	90-On	4	Red Eagle® - 60T - OD: 7.299" - PLI
031740UP5	UNIT PACK - Forward or Direct	.080	90-On	1	5 Red Eagle® Friction

Friction Clutch Unit Packs (One Rebuild)

ALTO No.	Description	Spec	Year	Qty	Notes
031744UP4	UNIT PACK - Intermediate	.080	90-96	1	4 Red Eagle® Friction
031746UP3	UNIT PACK - Overrun (4th)	.080	90-On	1	3 Red Eagle® Friction
031748UP4	UNIT PACK - Overdrive (4th)	.080	90-On	1	4 Red Eagle® Friction

Steel Clutches & Kolene® Clutches

ALTO No.	Description	Spec	Year	Qty	Notes
031703K	Forward	.077	90-On	5	Kolene® - 12T - ID: 4.585"
031711-325	Forward- PowerPack® component	.128	90-On	1	12T - ID: 4.585"
031711K	Direct	.090	90-On	5	Kolene® - 12T - ID: 4.575"
031715K	Intermediate	.076	90-On	4	Kolene® - 21T - ID: 5.000"
031721HK	Overrun w/Turbulator Holes	.099	90-On	3	Kolene® - 14T - ID: 4.520"
031723HK	Overdrive w/Turbulator Holes	.099	90-On	4	Kolene® - 8T - ID: 6.300"
031723K152	Overdrive- PowerPack® component	.060	90-On	AR	Kolene® - 8T - ID: 6.300"

Steel Clutch Unit Packs (One Rebuild)

ALTO No.	Description	Spec	Year	Qty	Notes
031703KUP5	UNIT PACK - Forward	.077	90-On	1	5 Kolene® Steels
031711KUP5	UNIT PACK - Direct	.090	90-On	1	5 Kolene® Steels

OEI® Original Equipment Improvements

ALTO No.	Description	Spec	Year	Qty	Notes
031750BPS	OEI® Power Solutions- Clutch Kit/HP Band includes Forward, Direct & Intermediate PowerPack®			1	
031755AHP	PowerPack® - Forward Clutch		90-On	1	Hi-Performance
031756HP	PowerPack® - Direct Clutch		90-On	1	Hi-Performance
031757AHP	PowerPack® - Intermediate Clutch		90-On	1	Hi-Performance

Bands - Red Eagle® or Carbonite®

ALTO No.	Description	Spec	Year	Qty	Notes
031960	Front (Manual 2-1)	Red	90-On	1	Red Eagle®

HI-PERFORMANCE PRODUCTS

GM TH440-T4 (4T60) 1983-93
4T60E 1992-99, 4T65E 1997-On

Friction Clutches - Red Eagle®

ALTO No.	Description	Spec	Year	Qty	Notes
062740-165	Forward Input	.065	8/94-On	4	Red Eagle® - 32T - OD: 4.643" -SB
062742A	2nd Clutch - 4T60, 4T60E	.060	83-On	6-7	Red Eagle® - 38T - OD: 5.122" - SM
062744C	3rd Clutch (1 sided) - internal spline	.079	89-On	5	Red Eagle® - 32T- ID: 3.373" - SM
062744D	3rd Clutch (1 sided) - external spline	.079	89-On	5	Heg - 12T - ID: 3.373" - SM
062746A	4th Clutch - 4T60	.090	84-93	1	Red Eagle® - 18T - OD: 5.312" - SM
	Bent tooth Friction to reuse 4th Clutch hub - NOT AVAILABLE SEPARATELY (Patent No. 496789)				
062746X	4th Clutch - (Bent Tooth) - PowerPack® Component	.090	83-93	1	Red Eagle® - 18T - OD: 5.311" - SM
062746XA	4th Clutch - (Bent Tooth) 4T60E/F7 - PowerPack® Component	.070	91-98	2	Red Eagle® - 18T - OD: 5.311" - SM

OEI® Original Equipment Improvements

ALTO No.	Description	Spec	Year	Qty	Notes
062756HP	2nd Clutch PowerPack®	Red	83-On	1	Hi-Performance
062758HP	4th Clutch PowerPack® - 4T60	Red	83-93	1	Bent Tooth Frict - Hi Perf
062758AHP	4th Clutch PowerPack® - 4T60E, F7	Red	87-93	1	Bent Tooth Frict - Hi Perf
062758BHP	4th Clutch PowerPack® - 4T60E	Red	92-98	1	Bent Tooth Frict - Hi Perf

Bands - Red Eagle® or Kevlar®

ALTO No.	Description	Spec	Year	Qty	Notes
062960	1-2 (Rear) Band - 4T60	Red	83-93	1	

GM TH700-R4 / 4L60 1982-92
4L60E 1992-On, 4L65E 2001-On

Master Kits

ALTO No.	Description	Year	Notes
057901HP	Master Kit - 4L60	82-84	1-057800, 1-057750EHP
057901AHP	Master Kit - 4L60	85-E87	1-057800, 1-057750HP
057901BHPPWR	Master Kit - 4L60 w/ 3-4 PowerPack®	87-92	1-057802, 1-057750AHPPWR
057901BHPPWR-4	Master Kit - 4L60 w/ 3-4 PowerPack® & PowerBand®	87-92	1-057802, 1-057750AHPPWR, 1-057961
057905HPPWR	Master Kit - 4L60E w/ 3-4 PowerPack®	92-On	1-057804, 1-057750AHPPWR
057905HPPWR-4	Master Kit - 4L60E w/ 3-4 PowerPack® & PowerBand®	92-On	1-057804, 1-057750AHPPWR, 1-057961

Overhaul Kits

ALTO No.	Description	Year	Notes
057800	Overhaul Kit - 4L60 w/Teflon Rings	82-E87	
057802	Overhaul Kit - 4L60 w/Teflon Rings	87-92	
057804*	Overhaul Kit - 4L60E w/Teflon Rings	92-On	
	* For 1997 and On applications, Molded pistons must be ordered separately		

Friction & Steel Modules

ALTO No.	Description	Year	Notes
057750EHP	Friction & Steel Module - 4L60	82-84	Red Eagle® Frictions & Kolene® Steels
057750HP	Friction & Steel Module - 4L60	85-E87	Red Eagle® Frictions & Kolene® Steels
057750AHPPWR	Friction & Steel Module - 4L60, 4L60E w/ 3-4 PowerPack®	87-On	Red Eagle® Frictions & Kolene® Steels

Friction Clutches - Red Eagle®

HI-PERFORMANCE PRODUCTS

GM TH700-R4 / 4L60 1982-92
4L60E 1992-On, 4L65E 2001-On

Friction Clutches - Red Eagle®

ALTO No.	Description	Spec	Year	Qty	Notes
057740	Forward (Hardened Spline)	.078	82-84	5	Red Eagle® - 41T - OD: 5.310" - SM
057740A	Forward (Hardened Spline)	.070	85-On	5	Red Eagle® - 41T - OD: 5.310" - SM
057742	Reverse Input	.078	82-87	4	Red Eagle® - 41T - OD: 6.039" - SM
057742A	Reverse Input	.070	87-On	4	Red Eagle® - 41T - OD: 6.039" - SM
057744	3/4 Clutch	.080	82-On	6	Red Eagle® - 20T - OD: 5.742" - SM
057744A	3/4 Clutch - PowerPack® Component	.062	82-On	AR	Red Eagle® - 20T - OD: 5.742" - SM
057744B210	3/4 Clutch (1 sided) - internal spline PowerPack® Component	.083	82-On	6	Red Eagle® - 20T - OD: 5.742" - SM
057745B210	3/4 Clutch (1 sided) - external spline PowerPack® Component	.083	82-On	3	Red Eagle® - 20T - ID: 4.995" - SM
057746	Overrun	.075	82-On	2	Red Eagle® - 36T - OD: 5.037" - SM
057748	Low/Reverse	.087	82-On	5	Red Eagle® - 25T - OD: 6.461" - SM

Friction Clutch Unit Packs (One Rebuild)

ALTO No.	Description	Spec	Year	Qty	Notes
057740UP5	Forward	.078	82-84	1	5 Red Eagle® Friction
057740AUP5	Forward	.070	85-On	1	5 Red Eagle® Friction
057742UP4	Reverse Input	.078	82-87	1	4 Red Eagle® Friction
057742AUP4	Reverse Input	.070	87-On	1	4 Red Eagle® Friction
057744UP6	3/4 Clutch	.080	82-On	1	6 Red Eagle® Friction
057744AUP9	3/4 Clutch - PowerPack® Component	.062	82-On	1	9 Red Eagle® Friction
057746UP2	Overrun	.075	82-On	1	2 Red Eagle® Friction
057748UP5	Low/Reverse	.087	82-On	1	5 Red Eagle® Friction

Steel Clutches & Kolene® Clutches

ALTO No.	Description	Spec	Year	Qty	Notes
057701K	Forward	.078	82-84	4	Kolene® - 20T - ID: 4.257"
057721K	Forward	.090	85-On	4-5	Kolene® - 20T - ID: 4.257"
057703K	Reverse Input	.078	82-On	3-4	Kolene® - 36T - ID: 5.084"
057703HK	Reverse Input with Turbulator Holes	.078	82-On	3-4	Kolene® - 36T - ID: 5.084"
057725K	3/4 Clutch	.076	82-1/93	5	Kolene® - 20T - ID: 4.995"
057725K270	3/4 Clutch	.106	1/93-On	5	Kolene® - 20T - ID: 4.995"
057725AK	3/4 Clutch - PowerPack® Component	.060	82-On	AR	Kolene® - 20T - ID: 4.995"
057713	3/4 Clutch - apply	.128	82-89	1	15T - ID: 4.995"
057707K	Overrun	.092	82-On	2	Kolene® - 10T - ID: 4.262"
032701K	Low/Reverse	.068	82-On	5	Kolene® - 17T - ID: 5.727"
032701HK	Low/Reverse with Turbulator Holes	.068	69-86	5	Kolene® - 17T - ID: 5.727"

Steel Clutch Unit Packs (One Rebuild)

ALTO No.	Description	Spec	Year	Qty	Notes
057701KUP4	UNIT PACK - Forward	.078	82-84	1	4 Kolene® Steel
057721KUP5	UNIT PACK - Forward	.090	85-On	1	5 Kolene® Steel
057703KUP4	UNIT PACK - Reverse Input	.078	82-On	1	4 Kolene® Steel
057703HKUP4	UNIT PACK - Reverse Input with Turbulator Holes	.078	82-95	1	4 Kolene® Steel
057725KUP5	UNIT PACK - 3/4 Clutch	.076	82-1/93	1	5 Kolene® Steel
057725AKUP10	UNIT PACK - 3/4 Clutch PowerPack® Comp	.060	82-On	1	10 Kolene® Steel
057713UP1	UNIT PACK - 3/4 Clutch PowerPack® Comp	.128	82-On	1	1 pressure plate
057707KUP2	UNIT PACK - Overrun	.092	82-On	1	2 Kolene® Steel
032701KUP5	UNIT PACK - Low/Reverse	.068	82-On	1	5 Kolene® Steel
032701HKUP5	UNIT PACK - Low/Reverse with Turbulator Holes	.068	69-86	1	5 Kolene® Steel

OEI® Original Equipment Improvements

HI-PERFORMANCE PRODUCTS

GM TH700-R4 / 4L60 1982-92
4L60E 1992-On, 4L65E 2001-On

OEI® Original Equipment Improvements

ALTO No.	Description	Spec	Year	Qty	Notes
057757BHP	3/4 Clutch PowerPack® - HI PERFORMANCE		82-On	1	Red Eagle® Frictions & Kolene® Steels
057757A	3/4 Clutch (1 sided) PowerPack® - HI PERFORMANCE		82-On	1	Red Eagle® Frictions
057757C	3/4 Clutch HEG PowerPack®		82-On	1	HEG Frictions
057758	DrumSaver® Kit - Reverse Input		87-On	1	
057501	Front Pump seal retainer		82-On	1	
057301	Servo Pin - Modified (extended)		82-On	1	Extended for better band adjustability
057254-062	3/4 Clutch Drum - Selective	.062	87-On	AR	
057258HD	Reaction gear to Support - Heavy Duty		82-On	1	8642220HD

Bands - Red Eagle® or Carbonite®

ALTO No.	Description	Spec	Year	Qty	Notes
057960	2-4 Intermediate - Heavy Duty	Red	82-On	1	Red Eagle®
057950C	2-4 Intermediate - Heavy Duty with reinforced anchors	CrB	82-On	1	Carbonite®
057961	2-4 Intermediate - Heavy Duty PowerBand®	Red	82-On	1	Red Eagle®
057961C	2-4 Intermediate - Heavy Duty PowerBand®	CrB	82-On	1	Carbonite®

Miscellaneous

ALTO No.	Description	Spec	Year	Qty	Notes
057315	Bolt, Bell Housing to Case - Torx Plus®	M10	82-On	8	Does Retro-fit
057315UP8	Bolt, Bell Housing to Case - Torx Plus® (Pack)	M10	82-On	1	8 Bolt Pack
057338	Molded Piston, Forward Clutch		97-On	1	
057337	Molded Piston, Overrun Clutch		97-On	1	
057339	Molded Piston, 3/4 Clutch		97-On	1	
057248S	1/16" Hex Plug	Steel	82-On	AR	
057249	1/8" Hex Plug	Brass	82-On	AR	
057249S	1/8" Hex Plug	Steel	82-On	AR	

ALLISON 1000, 2000, 2400 SERIES®
1999-On

OEI® Original Equipment Improvements

ALTO No.	Description	Spec	Year	Qty	Notes
152755	C-1 Clutch PowerPack®		99-05	1	
152755A	C-1 Clutch PowerPack®		06-On	1	
152756	C-2 Clutch PowerPack®		99-05	1	
152756A	C-2 Clutch PowerPack®		06-On	1	
152757	C-3 Clutch PowerPack®		99-05	1	
152757A	C-3 Clutch PowerPack®		06-On	1	
152758	C-4 Clutch PowerPack®		99-05	1	
152758A	C-4 Clutch PowerPack®		06-On	1	

Shafts

ALTO No.	Description	Spec	Year	Qty	Notes
152377HP	Input Shaft - 300M steel for Hi-Performance Vehicles		99-On	1	
152378HP	Output Shaft - 300M steel for H-Performance Vehicles		99-On	1	

HI-PERFORMANCE PRODUCTS

FORD AOD 1980-93, AODE 1992-95
4R70W 1993-On, 4R75W 04-On

Master Kits

ALTO No.	Description	Year	Notes
049905HPPWR	Master Kit - AOD w/ Direct PowerPack®	80-93	1-049800HP, 1-049750HPPWR
049907BHP	Master Kit - AOD w/ Direct PowerPack®	90-93	1-049800HP, 1-049750APWR
049909HPPWR	Master Kit - AODE w/ Direct PowerPack®	92-95	1-049802HP, 1-049750APWR
049911PWR	Master Kit - 4R70W w/ Direct PowerPack®	96-02	1-049804AFT, 1-049750K
049909CHP	Master Kit - AODE, 4R70W w/ Direct PowerPack®	92-02	1-049802HP, 1-049750EHP
049913PWR	Master Kit - 4R70W, 4R75W w/ Direct PowerPack®	03-On	1-049806, 1-049750K

Overhaul Kits

ALTO No.	Description	Year	Notes
049800HP	Overhaul Kit - AOD	80-93	OHK contains Farpak Gasket & Teflon Rings
049802HP	Overhaul Kit - AODE	92-02	OHK contains Farpak Gasket & Teflon Rings
049804AFT	Overhaul Kit - 4R70W	96-02	OHK contains Farpak Gasket & Teflon Rings
049806	Overhaul Kit - 4R75W	03-On	

Friction & Steel Modules

ALTO No.	Description	Year	Notes
049750HPPWR	Friction & Steel - AOD w/ Direct PowerPack®	80-93	Red Eagle® Frictions & Kolene® Steels
049750APWR	Friction & Steel - AODE w/ Direct PowerPack®	92-95	Red Eagle® Frictions & Kolene® Steels
049750K	Friction & Steel Module - 4R70W, 4R75W w/ Direct PowerPack®	96-On	Red Eagle® Frictions & Kolene® Steels
049750EHP	Friction & Steel Module - AODE, 4R70W w/ Direct PowerPack®	92-On	Red Eagle® Frictions & Kolene® Steels

Friction Clutches - Red Eagle®

ALTO No.	Description	Spec	Year	Qty	Notes
049740	Forward & Reverse	.061	Various	5/4	Red Eagle® - 45T - OD: 5.250" - SM
049740PL	Forward & Reverse- grooved	.061	Various	5/4	Red Eagle® grooved
049740A	Forward	.061	90-On	5	Red Eagle® - 45T - OD: 5.359" - SM
049742	Reverse	.080	80-83	4	Red Eagle® - 45T - OD: 5.250" - SM
049742PL	Reverse	.080	80-83	4	Red Eagle® - 45T - OD: 5.250" - PL
049744	Direct	.075	80-On	5	Red Eagle® - 42T - OD: 4.653" - SM
049744A	Direct - PowerPack® Component	.059	80-On	AR	Red Eagle® - 42T - OD: 4.653" - SM
049744APL	Direct - PowerPack® Component	.059	80-On	AR	Red Eagle®-PL
049744C170	Direct - 4R70W	.066	94-On	6	Red Eagle® - 42T - OD: 4.676" - PL
049746	Intermediate - some	.080	80-93	3-4	Red Eagle® - 60T - OD: 7.062" - SM
049746-170	Intermediate - some	.066	92-On	4	Red Eagle® - 60T - OD: 7.062" - SM

Friction Clutch Unit Packs (One Rebuild)

ALTO No.	Description	Spec	Year	Qty	Notes
049740UP5	UNIT PACK - Forward & Reverse	.061	Various	1	5 Red Eagle® Friction
049742UP5	UNIT PACK - Reverse	.080	80-83	1	5 Red Eagle® Friction
049744UP6	UNIT PACK - Direct	.075	80-On	1	5 Red Eagle® Friction
049744AUP8	UNIT PACK - Direct PowerPack® Comp.	.059	80-On	1	8 Red Eagle® Friction
049746UP3	UNIT PACK - Intermediate	.080	80-97	1	3 Red Eagle® Friction

Steel Clutches & Kolene® Clutches

ALTO No.	Description	Spec	Year	Qty	Notes
023701K	Forward & Reverse	.068	80-89	5/3	Kolene® - 54T - ID: 3.900"
049711K	Forward - Grob (stamped steel drum)	.069	90-On	5	Kolene® - 34T - ID: 3.900"
049711AK	Reverse - Grob (stamped steel drum)	.069	90-On	3	Kolene® - 32T - ID: 3.900"
049705K	Direct	.070	80-89	4	Kolene® - 28T - ID: 3.662"

HI-PERFORMANCE PRODUCTS

FORD AOD 1980-93, AODE 1992-95
4R70W 1993-On, 4R75W 04-On

Steel Clutches & Kolene® Clutches

ALTO No.	Description	Spec	Year	Qty	Notes
049715K200	Direct - Grob Lincoln Mark & Truck	.079	90-On	6	Kolene® - 34T - ID: 3.662"
049705AK	Direct - PowerPack® Component	.060	80-89	AR	Kolene® - 28T - ID: 3.662"
049715AK	Direct - PowerPack® Component	.059	90-On	AR	Kolene® - 34T - ID: 3.662"
049717K175	Intermediate	.069	80-On	3-4	Kolene® - 18T - ID: 5.864"

Steel Clutch Unit Packs (One Rebuild)

ALTO No.	Description	Spec	Year	Qty	Notes
023701KUP4	UNIT PACK - Forward & Reverse	.068	80-89	1	4 Kolene® Steel
049711AKUP3	UNIT PACK - Reverse	.069	90-On	1	3 Kolene® Steel
049705KUP4	UNIT PACK - Direct	.070	80-89	1	4 Kolene® Steel
049705AKUP11	UNIT PACK - Direct PowerPack® Comp.	.060	80-89	1	11 Kolene® Steel
049715AKUP8	UNIT PACK - Direct PowerPack® Comp.	.059	90-On	1	8 Kolene® Steel
049713UP1	UNIT PACK - Direct PowerPack® Comp.	.128	80-92	1	1 Pressure Plate
049707KUP3	UNIT PACK - Intermediate	.069	80-On	1	3 Kolene® Steel

Pressure Plates

ALTO No.	Description	Spec	Year	Qty	Notes
049760B700	Forward, backing - All	.275	90-On	1	34T
049713	Direct, apply - AOD PowerPack® Comp.	.128	80-92	1	Cast Iron Drum
049723	Direct, apply - AOD PowerPack® Comp.	.123	90-On	1	Grob (Stamped Steel Drum)

OEI® Original Equipment Improvements

ALTO No.	Description	Spec	Year	Qty	Notes
049750AHP	PowerPack® Direct (cast iron drum)		80-89	1	Red Eagle® & Kolene®
049754AHP	PowerPack® Direct Grob (stamped drum)		90-On	1	Red Eagle® & Kolene®
049756HP	Clearance Kit™, Intermediate Clutch		92-On	1	Red Eagle® & Kolene®
049758	PowerPack® Reverse (Cast Iron Drum)		80-89	1	
049758A	PowerPack® Reverse Grob (Stamped)		90-On	1	

Bands - Red Eagle® or Kevlar®

ALTO No.	Description	Spec	Year	Qty	Notes
049960	Overdrive - with Cast iron drum	1.500	80-90	1	Red Eagle®
049961	Overdrive - with Grob (stamped steel) drum	2.000	90-On	1	Red Eagle®

Shafts

ALTO No.	Description	Spec	Year	Qty	Notes
049382HP	Shaft, Direct - AODE, 4R70W		92-On	1	300M Steel for Hi-Performance Vehicles

Snap Rings

ALTO No.	Description	Spec	Year	Qty	Notes
049680HP	Kit, complete		80-On	1	includes Intern. retainer
049681HP	Kit, Intermediate sprag retainer & snap ring		80-On	1	

HI-PERFORMANCE PRODUCTS

FORD C4 1964-81

C5 1982-86

Master Kits

ALTO No.	Description	Year	Notes
025903HP	Master Kit	70-81	1-025804HP, 1-025752HP, 1-025753HP
025903HPPWR	Master Kit - with Reverse PowerPack®	70-81	1-025804HP, 1-025750HPPWR

Banner Kits

ALTO No.	Description	Year	Notes
025903HPLS	Banner Kit	70-81	1-025804HP, 1-025752HP

Overhaul Kits

ALTO No.	Description	Year	Notes
025804HP	Overhaul Kit - w/Farpak Gasket & Teflon Rings	70-81	

Gasket

ALTO No.	Description	Spec	Year	Qty	Notes
025001A	Gasket, Front Pump to Case .030" Thick	.030	70-81	1	

Friction & Steel Modules

ALTO No.	Description	Year	Notes
025750HPPWR	Friction & Steel Module- with Reverse PowerPack®	70-81	Red Eagle® & Kolene®

Friction Modules

ALTO No.	Description	Year	Notes
025752HP	Friction Module	65-86	Red Eagle® Frictions

Steel Modules

ALTO No.	Description	Year	Notes
025753HP	Steel Module	64-81	Kolene® Steels

Friction Clutches - Red Eagle®

ALTO No.	Description	Spec	Year	Qty	Notes
025740	Forward (rear)	.061	65-86	4-5	Red Eagle® - 42T - OD: 4.556" - SM
025742	Reverse (front)	.078	65-86	3-4	Red Eagle® - 42T - OD: 4.556" - SM
025744-150	Reverse (front) PowerPack® Comp.	.059	65-86	AR	Red Eagle® - 42T - OD: 4.556" - C2PL

Friction Clutch Unit Packs (One Rebuild)

ALTO No.	Description	Spec	Year	Qty	Notes
025740UP5	UNIT PACK - Forward (rear)	.061	64-86	1	5 Red EAgle® Friction
025742UP4	UNIT PACK - Reverse (front)	.078	65-86	1	4 Red Eagle® Friction

Steel Clutches & Kolene® Clutches

ALTO No.	Description	Spec	Year	Qty	Notes
025701K	Forward / Reverse - smooth finish	.078	64-86	3-4	Kolene® - 26T - ID: 3.596"
025701K150	Reverse - thin	.060	64-86	3-4	Kolene® - 26T - ID: 3.596"
025701HK150	Reverse - thin with Turbulator Holes	.060	64-86	3-4	Kolene® - 26T - ID: 3.596"
025701-150	Reverse - thin	.060	64-86	3-4	26T - ID: 3.596"

Pressure Plates

ALTO No.	Description	Spec	Year	Qty	Notes
025701-330	Reverse - C4 backing PowerPack® Comp.	.130	64-86	1	26T - ID: 3.596"
025701-444	Reverse - C5 backing PowerPack® Comp.	.174	82-86	1	14T - ID: 3.596"

HI-PERFORMANCE PRODUCTS

FORD C4 1964-81

C5 1982-86

Steel Clutch Unit Packs (One Rebuild)

ALTO No.	Description	Spec	Year	Qty	Notes
025701KUP4	UNIT PACK - Forward / Reverse	.078	64-86	1	4 Kolene® Steel

OEI® Original Equipment Improvements

ALTO No.	Description	Spec	Year	Qty	Notes
025755A	PowerPack®- C4 Reverse		64-86	1	Red Eagle® & Kolene®
025755	PowerPack® - C5 Reverse		82-86	1	Red Eagle® & Kolene®

Bands - Red Eagle® or Kevlar®

ALTO No.	Description	Spec	Year	Qty	Notes
025957HP	Intermediate (front) - flex	2.125	67-86	1	Red Eagle®
025957C	Intermediate (front) - flex	2.125	67-86	1	Carbonite®
025960	Intermediate (front) - rigid	2.125	67-86	1	Red Eagle®
025960K	Intermediate (front) - rigid	2.125	67-86	1	Kevlar®

FORD C6

1966-96

Master Kits

ALTO No.	Description	Year	Notes
026901HP	Master Kit	67-76	1-026800HP, 1-026752HP, 1-026753HP
026903HP	Master Kit	76-96	1-026802HP, 1-026752AHP, 1-026753HP

Banner Kits

ALTO No.	Description	Year	Notes
026901HPLS	Banner Kit	67-76	1-026800HP, 1-026752HP
026903HPLS	Banner Kit	76-96	1-026802HP, 1-026752AHP

Overhaul Kits

ALTO No.	Description	Year	Notes
026800HP	Overhaul Kit - w/Farpak® and Metal Rings	67-76	
026802HP	Overhaul Kit - w/Farpak® and Teflon Rings	76-96	

Friction Modules

ALTO No.	Description	Year	Notes
026752HP	Friction Module	67-76	Red Eagle® Frictions
026752AHP	Friction Module	76-96	Red Eagle® Frictions

Steel Modules

ALTO No.	Description	Year	Notes
026753HP	Steel Module	67-96	Kolene® Steels

Friction Clutches - Red Eagle®

ALTO No.	Description	Spec	Year	Qty	Notes
026740	Forward	.061	67-76	3-5	Red Eagle® - 90T - OD: 6.358" - SM
026740WF	Forward	.061	67-76	3-5	Red Eagle® - 90T - OD: 6.358" - WF
026746	Forward - hardened spline	.075	76-96	4	Red Eagle® - 90T - OD: 6.358" - SM
026742	Direct	.075	66-96	3-4	Red Eagle® - 63T - OD: 6.364" - SM
026742PL	Direct	.075	66-96	3-4	Red Eagle® - 63T - OD: 6.364" - PL

HI-PERFORMANCE PRODUCTS

FORD C6

1966-96

Friction Clutches - Red Eagle®

ALTO No.	Description	Spec	Year	Qty	Notes
026742A	Direct - PowerPack® Component	.062	66-96	AR	Red Eagle® - 63T - OD: 6.364" - SM
026744	Reverse	.075	66-96	4-6	Red Eagle® - 72T - OD: 6.796" - SM

Friction Clutch Unit Packs (One Rebuild)

ALTO No.	Description	Spec	Year	Qty	Notes
026740UP5	UNIT PACK - Forward	.061	67-76	1	5 Red Eagle® Friction
026746UP4	UNIT PACK - Forward	.075	76-96	1	4 Red Eagle® Friction
026742UP5	UNIT PACK - Direct	.075	66-96	1	5 Red Eagle® Friction
026744UP6	UNIT PACK - Reverse	.075	66-96	1	6 Red Eagle® Friction

Steel Clutches & Kolene® Clutches

ALTO No.	Description	Spec	Year	Qty	Notes
026701AK	Forward PowerPack® Component	.059	66-96	AR	Kolene® - 26T - ID: 5.121"
026701AHK	Direct PowerPack® Comp.- w/Turbulator holes	.059	66-96	4	Kolene® - 26T - ID: 5.121"
026703K	Reverse	.068	66-96	4-6	Kolene® - 18T - ID: 5.697"

Steel Clutch Unit Packs (One Rebuild)

ALTO No.	Description	Spec	Year	Qty	Notes
026701KUP4	UNIT PACK - Forward or Direct	.078	66-96	1	4 Kolene® Steel
026703KUP6	UNIT PACK - Reverse	.068	66-96	1	6 Kolene® Steel

OEI® Original Equipment Improvements

ALTO No.	Description	Spec	Year	Qty	Notes
026755A	PowerPack® - Forward clutch		66-96	1	
026755	PowerPack® - Forward clutch - Hi Perf.		66-96	1	Red Eagle® & Kolene®
026757HP	PowerPack® - Direct clutch - Hi Perf.		66-96	1	Red Eagle® & Kolene®

Bands - Red Eagle® or Carbonite®

ALTO No.	Description	Spec	Year	Qty	Notes
026969	Intermediate - Flex	Red	66-96	1	Red Eagle®
026968	Intermediate - Flex PowerBand®	Red	66-96	1	Red Eagle®
026968C	Intermediate - Flex PowerBand®	Crb	66-96	1	Carbonite®
026968K	Intermediate - Flex PowerBand®	Kev	66-96	1	Kevlar®

HI-PERFORMANCE PRODUCTS

FORD E4OD 1989-98

4R100 1999-On

Master Kits

ALTO No.	Description	Year	Notes
026907HP	Master Kit - E4OD	89-95	1-026804FT, 1-026752BHP, 1-026753AHP
026907X	Master Kit - E4OD w/ Forward, Direct and Overdrive PowerPack®	88-95	1-026804FT, 1-026750FX
026907AX	Master Kit - E4OD w/ Forward, Direct and Overdrive PowerPack®	96-98	1-026804AFT, 1-026750FX
026907HPPWR	Master Kit - E4OD w/ Direct PowerPack®	88-95	1-026804FT, 1-026750BHPWR
026907AHPWR	Master Kit - E4OD w/ Direct PowerPack®	94-4/97	1-026804AFT, 1-026750BHPWR
026907BHPPWR	Master Kit - E4OD w/ Direct PowerPack®	5/97-98	1-026804AFT, 1-026750FHPPWR
026909X	Master Kit - 4R100 w/ Forward, Direct, Intermediate and Overdrive PowerPack®	99-On	1-026806FT, 1-026750GX
026909HPPWR	Master Kit - 4R100 w/ Direct PowerPack®	99-00	1-026804FT, 1-026750FHPPWR
026909AHPWR	Master Kit - 4R100 w/ Direct PowerPack®	01-On	1-026804FT, 1-026750GHPPWR

Banner Kits

ALTO No.	Description	Year	Notes
026907HPLS	Banner Kit - E4OD	89-95	1-026804FT, 1-026752BHP

Overhaul Kits

ALTO No.	Description	Year	Notes
026804FT	Overhaul Kit - E4OD - w/Farpak & Teflon Rings	88-95	
026804AFT	Overhaul Kit - E4OD - w/Farpak & Teflon Rings	94-98	
026806FT	Overhaul Kit - 4R100 - w/Farpak & Teflon Rings	99-On	

Friction & Steel Modules

ALTO No.	Description	Year	Notes
026750FX	Friction & Steel Module - E4OD w/ Forward, Direct and Overdrive PowerPack®	89-98	Red Eagle® Frictions & Kolene® Steels
026750FX	Friction & Steel Module - E4OD w/ Forward, Direct and Overdrive PowerPack®	89-98	Red Eagle® Frictions & Kolene® Steels
026750GX	Friction & Steel Module - E4OD w/ Forward, Direct, Intermediate and Overdrive PowerPack®	99-On	Red Eagle® Frictions & Kolene® Steels
026750BHPWR	Friction & Steel Module - E4OD w/ Direct PowerPack®	88-4/97	Red Eagle® Frictions & Kolene® Steels
026750FHPPWR	Friction & Steel Module - E4OD/4R100 w/ Direct PowerPack®	5/97-00	Red Eagle® Frictions & Kolene® Steels
026750GHPPWR	Friction & Steel Module - 4R100 w/ Direct PowerPack®	01-On	Red Eagle® Frictions & Kolene® Steels
	All above kits with hardened steel Forward Frictions		

Friction Modules

ALTO No.	Description	Year	Notes
026752BHP	Friction Module - E4OD w/Hardened steel Forward Frictions	89-95	Red Eagle® Frictions

Steel Modules

ALTO No.	Description	Year	Notes
026753AHP	Steel Module - E4OD	89-95	Kolene® Steels

Friction Clutches - Red Eagle®

ALTO No.	Description	Spec	Year	Qty	Notes
026746	Forward - hardened spline	.075	89-On	4	Red Eagle® - 90T - OD: 6.358" - SM
026742	Direct	.077	89-On	4-5	Red Eagle® - 63T - OD: 6.358" - SM
026742PL	Direct	.077	89-On	4-5	Red Eagle® - 63T - OD: 6.358" - PL
026742A	Direct - PowerPack® Component	.062	89-On	AR	Red Eagle® - 63T - OD: 6.358" - SM
026744	Reverse	.075	89-4/97	6	Red Eagle® - 72T - OD: 6.796" - SM

HI-PERFORMANCE PRODUCTS

FORD E40D 1989-98

4R100 1999-On

Friction Clutches - Red Eagle®

ALTO No.	Description	Spec	Year	Qty	Notes
026744AA	Reverse - Grob drum (anti skid groove)	.078	5/97-On	3	Red Eagle® - 24T - OD: 6.805" - 8SBR
026722B	Overdrive - Super Duty PU trucks	.078	99	3	Red Eagle® - 23T - OD: 8.691" - PL
026722BSM	Overdrive - w/ grob smooth	.079	5/97-On	2-3	Red Eagle® - 32T - OD: 8.691" - SM
026722C	Overdrive	.078	89-4/97	2-3	Red Eagle® - 64T - OD: 8.700" - WF
026722C177	Overdrive - PowerPack® Component	.070	89-4/97	2-3	Red Eagle® - 64T - OD: 8.695" - WF
026722CSM	Overdrive - w/ cast iron smooth	.079	5/97-99	2-3	Red Eagle® - 64T - OD: 8.700" - SM
026724C190	Intermediate - anti-skid	.076	01-On	3	Red Eagle® - 60T - OD: 7.793" - 8SBR
026724D	Intermediate	.078	89-4/97	3-4	Red Eagle® - 50T - OD: 7.793" - WF
026724E	Intermediate	.078	5/97-00	3-4	Red Eagle® - 50T - OD: 7.793" - 8SBR
026726A	Coast	.078	89-On	2	Red Eagle® - 60T - OD: 6.596" - PL

Friction Clutch Unit Packs (One Rebuild)

ALTO No.	Description	Spec	Year	Qty	Notes
026746UP4	Forward	.075	89-On	1	4 Red Eagle® Frictions
026742UP5	Direct	.077	89-On	1	5 Red Eagle® Frictions
026744UP6	Reverse	.075	89-4/97	1	6 Red Eagle® Frictions

Steel Clutches & Kolene® Clutches

ALTO No.	Description	Spec	Year	Qty	Notes
026701K	Forward	.078	89-On	4	Kolene® - 26T - ID: 5.121"
026717AK	Forward - PowerPack® Component	.090	89-On	AR	Kolene® - 26T - ID: 5.121"
026701K	Direct	.078	89-On	4	Kolene® - 26T - ID: 5.121"
026701AK	Direct - PowerPack® Component	.059	89-On	AR	Kolene® - 26T - ID: 5.121"
026701AHK	Direct - thin with Turbulator holes	.059	89-On	AR	Kolene® - 26T - ID: 5.121"
026723K200	Overdrive	.080	89-On	AR	Kolene® - 18T - ID: 5.800"
026725K	Intermediate	.080	89-98	2	Kolene® - 30T - ID: 6.210"
026761K	Intermediate	.123	89-98	1	Kolene® - 26T - ID: 6.210"
026703K	Reverse	.068	89-On	6	Kolene® - 18T - ID: 5.800"
026727K	Coast	.080	89-99	2	Kolene® - 60T - ID: 5.850"
026727AK	Coast	.079	99-On	2	Kolene® - 32T - ID: 5.850"

Steel Clutch Unit Packs (One Rebuild)

ALTO No.	Description	Spec	Year	Qty	Notes
026701KUP4	UNIT PACK - Forward or Direct	.078	89-On	1	4 Kolene® Steel
026703KUP6	UNIT PACK - Reverse	.068	89-On	1	6 Kolene® Steel

OEI® Original Equipment Improvements

ALTO No.	Description	Spec	Year	Qty	Notes
026755	PowerPack® - Forward Clutch		99-On	1	Red Eagle® Frictions & Kolene® Steels
026756	PowerPack® - Intermediate 4R100		99-On	1	
026757HP	PowerPack® - Direct Clutch (Hi - Perf.)		89-On	1	Red Eagle® Frictions & Kolene® Steels
026758A	PowerPack® - Overdrive Clutch-Early		89-98	1	Red Eagle® Frictions & Kolene® Steels
026758	PowerPack® - Overdrive Clutch-Late		99-On	1	
026759	Clearance Kit™		89-On	1	Fixes delayed Reverse

HI-PERFORMANCE PRODUCTS

FORD 5R55N

1999-On

Friction Clutches - Red Eagle® & Hi-Energy

ALTO No.	Description	Spec	Year	Qty	Notes
137740-170	Forward	.067	99-On	4-5	Red Eagle® - 89T - OD: 5.231" - SP
137742A205	Direct - internal spline	.081	99-On	4-5	Red Eagle® - 48T - OD: 4.893" - SP
137743A205	Direct - external spline	.081	99-On	4-5	Red Eagle® - 30T - ID: 3.970" - SP
137704-245	Intermediate - internal spline	.096	99-On	3-4	Heg - 24T - OD: 5.708" - SP
137705-245	Intermediate - external spline	.096	99-On	3-4	Heg - 33T - ID: 4.323" - SP
041744A	Overdrive/Coast	.069	99-On	2	Red Eagle® - 16T - OD: 4.894" - SP

Steel Clutches & Kolene® Clutches

ALTO No.	Description	Spec	Year	Qty	Notes
137701K167	Forward	.067	99-On	5	Kolene® - 27T - ID: 4.638"
041711K	Overdrive/Coast	.065	99-On	2	Kolene® - 20T - ID: 3.970"

Bands - Red Eagle®

ALTO No.	Description	Spec	Year	Qty	Notes
137960	Intermediate & Overdrive - with Heat Treated Anchors	Flex	99-On	1	Red Eagle®

FORD 5R110W

2003-On

Master Kits

ALTO No.	Description	Year	Notes
166901HP	Master Kit - with Forward & Direct PowerPack®	03-04	1-166800X, 1-166750HP
166901AHP	Master Kit - with Forward & Direct PowerPack®	05-On	1-166800X, 1-166750AHP

Friction & Steel Modules

ALTO No.	Description	Year	Notes
166750HP	Friction & Steel Module - 5R110W with Forward & Direct PowerPack®	03-04	Red Eagle® Frictions & Kolene® Steels
166750AHP	Friction & Steel Module - 5R110W with Forward & Direct PowerPack®	05-On	Red Eagle® Frictions & Kolene® Steels

Friction Clutches - Red Eagle®

ALTO No.	Description	Spec	Year	Qty	Notes
026740	Forward	.061	03-04	5	Red Eagle® - 90T - OD: 6.358" - SM
166740-150	Forward - PowerPack®	.059	05-On	5	Red Eagle® - 76T - OD: 6.379" - SB
166742-160	Direct - PowerPack®	.063	03-On	5	Red Eagle® - 48T - OD: 6.266" - WF
026722BSM	Overdrive Brake	.079	03-On	3	Red Eagle® - 32T - OD: 8.691" - SM
166746-198	Coast	.079	03-On	3	Red Eagle® - 59T - OD: 6.000" - SB
166748-198	Intermediate	.079	03-04	3	Red Eagle® - 24T - OD: 7.793" - WF
166748A193	Intermediate	.079	05-On	3	Red Eagle® - 96T - OD: 7.793" - SB
026744	Low Reverse	.075	03-On	6	Red Eagle® - 72T - OD: 6.796" - SM

Steel Clutches & Kolene® Clutches

ALTO No.	Description	Spec	Year	Qty	Notes
166703K150	Forward	.059	03-04	4	Kolene® - 25T - ID: 5.121"
166701K170	Forward	.067	05-On	5	Kolene® - 25T - ID: 5.380"
166703K203	Forward/Direct	.080	03-On	4-5	Kolene® - 25T - ID: 5.120"
026723K200	Overdrive Brake	.080	03-On	3	Kolene® - 18T - ID: 5.800"

HI-PERFORMANCE PRODUCTS

FORD 5R110W

2003-On

Steel Clutches & Kolene® Clutches

ALTO No.	Description	Spec	Year	Qty	Notes
166707K200	Coast	.079	03-On	3	Kolene® - 32T - ID: 5.849"
166709K315	Intermediate	.125	03-04	3	Kolene® - 26T - ID: 6.506"
166709K295	Intermediate	.116	05-On	3	Kolene® - 26T - ID: 6.506"
026703K	Low Reverse	.068	03-On	6	Kolene® - 18T - ID: 5.697"

Pressure Plates

ALTO No.	Description	Spec	Year	Qty	Notes
166761-622	Direct Apply	.245	03-On	1	25T - ID: 5.120"

OEI® Original Equipment Improvements

ALTO No.	Description	Spec	Year	Qty	Notes
166756	PowerPack® - Forward Clutch		03-04	1	Red Eagle® Frictions & Kolene® Steels
166756A	PowerPack® - Forward Clutch		05-On	1	Red Eagle® Frictions & Kolene® Steels
166757	PowerPack® - Direct Clutch		03-On	1	Red Eagle® Frictions & Kolene® Steels

FORD FMX

1968-81

Friction Clutches - Red Eagle®

ALTO No.	Description	Spec	Year	Qty	Notes
049740	Front	.061	68-81	5	Red Eagle® - 45T - OD: 5.250" - SM
049742	Rear	.080	68-81	4	Red Eagle® - 45T - OD: 5.250" - SM
049742PL	Rear	.080	68-81	4	Red Eagle® - 45T - OD: 5.250" - PL

Friction Clutch Unit Packs (One Rebuild)

ALTO No.	Description	Spec	Year	Qty	Notes
049740UP5	UNIT PACK - Front	.061	68-81	1	5 Red Eagle® Friction
049742UP5	UNIT PACK - Rear	.080	68-81	1	5 Red Eagle® Friction

Steel Clutches & Kolene® Clutches

ALTO No.	Description	Spec	Year	Qty	Notes
023701K	Front	.068	68-81	3-4	Kolene® - 54T - ID: 3.900"
023701K	Rear	.068	68-81	4-5	Kolene® - 54T - ID: 3.900"

Steel Clutch Unit Packs (One Rebuild)

ALTO No.	Description	Spec	Year	Qty	Notes
023701KUP4	UNIT PACK - Front or Rear	.068	68-81	1	4 Kolene® Steel

HI-PERFORMANCE PRODUCTS

FORD 4F27E

1999-On

Master Kits

ALTO No.	Description	Year	Notes
133903HP	Master Kit - without Molded Pistons	00-On	1-133802X, 1-133752HP, 1-133753AHP
133903HPPWR	Master Kit - w/ Direct Powerpack™ (without Pistons)	00-On	1-133802X, 1-133750AHPPWR

Banner Kits

ALTO No.	Description	Spec	Year	Qty	Notes
133903HPLS	Banner Kit - without Molded Pistons		00-On	1	1-133802X, 1-133752HP

Overhaul Kits

ALTO No.	Description	Year	Notes
133802	Overhaul Kit - with Molded Pistons	00-On	
133802X	Overhaul Kit - without Molded Pistons	00-On	

Friction & Steel Modules

ALTO No.	Description	Year	Notes
133750AHPPWR	Friction & Steel Module - w/ Direct PowerPack®	00-On	Red Eagle® Frictions & Kolene® Steels

Friction Modules

ALTO No.	Description	Year	Notes
133752HP	Friction Module	00-On	Red Eagle® Frictions

Steel Modules

ALTO No.	Description	Year	Notes
133753AHP	Steel Module	00-On	Kolene® Steels

Friction Clutches - Red Eagle®

ALTO No.	Description	Spec	Year	Qty	Notes
133740-160	Forward	.063/1.6	99-On	4	Red Eagle® - 32T - OD: 4.527" - PL
133740-160	Direct	.063/1.6	99-On	4	Red Eagle® - 32T - OD: 4.527" - PL
133744-160	Reverse	.063/1.6	99-On	2	Red Eagle® - 32T - OD: 5.515" - PL
133746-160	Low / Reverse	.063/1.6	99-On	5	Red Eagle® - 42T - OD: 6.079" - PL

Steel Clutches & Kolene® Clutches

ALTO No.	Description	Spec	Year	Qty	Notes
133701K160	Forward / Direct	.063/1.6	99-On	7	Kolene® - 32T - ID: 3.715"
133705K160	Reverse	.063/1.6	99-On	2	Kolene® - 36T - ID: 5.022"
133701K345	3rd & 4th (Direct)	.136/3.45	00-On	3	Kolene® - 32T - ID: 3.715"
133707K160	Low / Reverse	.063/1.6	99-On	5	Kolene® - 12T - ID: 5.621"

OEI® Original Equipment Improvements

ALTO No.	Description	Spec	Year	Qty	Notes
133757	Direct PowerPack® - HI-PERFORMANCE		99-On	1	Red Eagle®

Bands - Red Eagle® or Kevlar®

ALTO No.	Description	Spec	Year	Qty	Notes
133960	Brake	Red	99-On	1	Red Eagle®

HI-PERFORMANCE PRODUCTS

CHRYSLER A404, 413, 470, 670
30TH, 31TH 1978-On

Master Kits

ALTO No.	Description	Year	Notes
045903HP	Master Kit	81-On	1-045802HP, 1-045750HP
045903HPPWR	Master Kit - w/Reverse PowerPack®	81-On	1-045802HP, 1-045750HPPWR

Overhaul Kits

ALTO No.	Description	Year	Notes
045802HP	Overhaul Kit - w/Farpak Gasket & Teflon Rings	81-On	

Friction & Steel Modules

ALTO No.	Description	Year	Notes
045750HP	Friction & Steel Module	81-On	Red Eagle® Frictions & Kolene® Steels
045750HPPWR	Friction & Steel Module - w/ Reverse PowerPack®	81-On	Red Eagle® Frictions & Kolene® Steels

Friction Clutches - Red Eagle®

ALTO No.	Description	Spec	Year	Qty	Notes
045740-210	Front	.083	78-On	2-4	Red Eagle® - 47T - OD: 4.887"
045744-180	Rear	.071	81-On	2-4	Red Eagle® - 49T - OD: 4.898"

OEI® Original Equipment Improvements

ALTO No.	Description	Spec	Year	Qty	Notes
045756	Hi-Reverse PowerPack®		81-On	1	
045755	Forward PowerPack®		81-On	1	

Steel Clutches & Kolene® Clutches

ALTO No.	Description	Spec	Year	Qty	Notes
045703K	Front	.101	81-On	3-4	Kolene® - 8T - 4.100"
045705K	Rear	.068	81-On	2-3	Kolene® - 8T - 4.255"

Bands - Red Eagle® or Carbonite®

ALTO No.	Description	Spec	Year	Qty	Notes
045960	Kickdown (Front)	Red	78-On	1	Red Eagle®
045963	Kickdown (Front) - Heavy Duty PowerBand®	Red	78-On	1	Red Eagle®
045963C	Kickdown (Front) - Super Duty PowerBand®	CrB	78-On	1	Carbonite®

CHRYSLER TF6 - A904, 998, 999 (30RH, 31RH, 32RH) 1960-On
A500 (40RH, 42RH, 42RE, 44RE) 1989-On

Master Kits

ALTO No.	Description	Year	Notes
027903HP	Master Kit - TF6, A904	72-On	1-027802HP, 1-027752HP, 1-027753HP
027905HP	Master Kit - A500 (40RH Only)	89-On	1-027804, 1-027752AHP, 1-027753AHP
027905AHP	Master Kit - A500 All	89-On	1-027804, 1-027752BHP, 1-027753BHP

Banner Kits

ALTO No.	Description	Year	Notes
027903HPLS	Banner Kit - TF6, A904	72-On	1-027802HP, 1-027752HP
027905HPLS	Banner Kit - A500 (40RH Only)	89-On	1-027804, 1-027752AHP
027905AHPLS	Banner Kit - A500 All	89-On	1-027804, 1-027752BHP

HI-PERFORMANCE PRODUCTS

CHRYSLER TF6 - A904, 998, 999 (30RH, 31RH, 32RH) 1960-On
A500 (40RH, 42RH, 42RE, 44RE) 1989-On

Overhaul Kits

ALTO No.	Description	Year	Notes
027802	Overhaul Kit - TF6, A904	72-On	
027804	Overhaul Kit - A500	89-On	

Friction Modules

ALTO No.	Description	Year	Notes
027752HP	Friction Module - TF6, A904	72-On	Red Eagle® Frictions
027752AHP	Friction Module - A500 (40RH Only)	89-On	Red Eagle® Frictions
027752BHP	Friction Module - A500 All	89-On	Red Eagle® Frictions

Steel Modules

ALTO No.	Description	Year	Notes
027753HP	Steel Module - TF6, A904	72-On	Kolene® Steels
027753AHP	Steel Module - A500 (40RH Only)	89-On	Kolene® Steels
027753BHP	Steel Module - A500 All	89-On	Kolene® Steels

Friction Clutches - Red Eagle®

ALTO No.	Description	Spec	Year	Qty	Notes
027740	Front - Smooth	.086	89-On	3-4	Red Eagle® - 45T - OD: 4.940" - SM
027740PL	Front	.086	89-On	3-4	Red Eagle® - 45T - OD: 4.940" - PL
027742	Rear - Smooth	.061	89-On	3-4	Red Eagle® - 45T - OD: 4.940" - SM
027742PL	Rear -	.061	89-On	3-4	Red Eagle® - 45T - OD: 4.940" - PL
027744	Overdrive Direct	.063	89-On	6-8	Red Eagle® - 54T - OD: 5.475" - SM
027746	Overdrive Brake	.087	89-On	2-5	Red Eagle® - 54T - OD: 6.077" - SM

Friction Clutch Unit Packs (One Rebuild)

ALTO No.	Description	Spec	Year	Qty	Notes
027740UP4	UNIT PACK - Front	.086	89-On	1	4 Red Eagle® Friction
027742UP4	UNIT PACK - Rear	.061	89-On	1	4 Red Eagle® Friction
027744UP8	UNIT PACK - Overdrive Direct	.063	89-On	1	8 Red Eagle® Friction
027746UP5	UNIT PACK - Overdrive Brake	.087	89-On	1	5 Red Eagle® Friction

Steel Clutches & Kolene® Clutches

ALTO No.	Description	Spec	Year	Qty	Notes
027701K	Front & Rear	.068	60-On	4/4	Kolene® - 12T - ID: 3.950"
027701K200	Front & Rear - Selective	.079	89-On	AR	Kolene® - 12T - ID: 3.950"
027717K216	Front & Rear - selective	.085	89-On	AR	Kolene® - 12T - ID: 3.950"
027721K	Overdrive Direct	.069	89-On	5-7	Kolene® - 12T - ID: 4.685"
027723K	Overdrive Brake	.068	89-On	1-3	Kolene® - 12T - ID: 5.024"

Steel Clutch Unit Packs (One Rebuild)

ALTO No.	Description	Spec	Year	Qty	Notes
027701KUP4	UNIT PACK - Front or Rear	.068	89-On	1	4 Kolene® Steel

HI-PERFORMANCE PRODUCTS

CHRYSLER TF8, A727 (36RH, 37RH) 1962-97

A518 1990-On, A618 1994-On

Master Kits

ALTO No.	Description	Year	Notes
028903HP	Master Kit - TF8, A727	71-97	1-028802, 1-028752HP, 1-028753HP
028903HPPWR	Master Kit - TF8, A727 w/ Front PowerPack®	71-97	1-028802, 1-028750HPPWR
028905HP	Master Kit - A518	90-93	1-028806, 1-028752AHP, 1-028753AHP
028905HPPWR	Master Kit - A518 w/ Front PowerPack®	90-93	1-028806, 1-028750AHPPWR
028907BHP	Master Kit - A518 / A618	94-97	1-028806, 1-028752BHP, 1-028753BHP
028907BHPPWR	Master Kit - A518 / A618 w/ Front PowerPack®	94-97	1-028806, 1-028750BHPPWR
028907EHPPWR	Master Kit - A618 / 48RE w/ Front PowerPack®	94-02	1-028806, 1-028750EHPPWR
028907CHP	Master Kit - A518 / A618	98-02	1-028806, 1-028752CHP, 1-028753CHP
028907XHPPWR	Master Kit - A518 / A618 w/Front, Rear & Overdrive PowerPack®	90-02	1-028806, 1-028750XHPPWR
028907FHP	Master Kit - A618 / 48RE	03-On	1-028808, 1-028752FHP, 1-028753FHP
028907FHPPWR	Master Kit - A618 / 48RE w/Front, Rear & Overdrive PowerPack®	03-On	1-028808, 1-028750FHPPWR

Banner Kits

ALTO No.	Description	Year	Notes
028903HPLS	Banner Kit - TF8, A727	71-97	1-028802, 1-028752HP
028905HPLS	Banner Kit - A518	90-93	1-028806, 1-028752AHP
028907BHPLS	Banner Kit - A518 / A618	94-97	1-028806, 1-028752BHP
028907EHPLS	Banner Kit - A618 / 48RE	94-02	1-028806, 1-028752EHP
028907CHPLS	Banner Kit - A518 / A618	98-02	1-028806, 1-028752CHP
028907FHPLS	Banner Kit - A618 / 48RE	03-On	1-028808, 1-028752FHP

Overhaul Kits

ALTO No.	Description	Year	Notes
028802	Overhaul Kit - TF8, A727	71-97	
028806	Overhaul Kit - A518 / A618	90-02	
028808	Overhaul Kit - A618 / 48RE	03-On	

Friction & Steel Modules

ALTO No.	Description	Year	Notes
028750HPPWR	Friction/Steel Module - TF8, A727 w/ Front PowerPack®	71-97	Red Eagle® Frictions & Kolene® Steels
028750AHPPWR	Friction/Steel Module - A518 w/ Front PowerPack®	90-93	Red Eagle® Frictions & Kolene® Steels
028750BHPPWR	Friction/Steel Module - A518, A618 w/ Front PowerPack®	94-E97	Red Eagle® Frictions & Kolene® Steels
028750EHPPWR	Friction/Steel Module - A518, A618 w/ Front PowerPack®	94-02	Red Eagle® Frictions & Kolene® Steels
028750XHPPWR	Friction/Steel Module - A518, A618 w/ Front, Rear & Overdrive PowerPack®	90-02	Red Eagle® Frictions & Kolene® Steels
028750FHPPWR	Friction/Steel Module - A618 / 48RE w/ Front, Rear & Overdrive PowerPack®	03-On	Red Eagle® Frictions & Kolene® Steels

Friction Modules

ALTO No.	Description	Year	Notes
028752HP	Friction Module - TF8, A727	71-97	Red Eagle® Frictions
028752AHP	Friction Module - A518	90-93	Red Eagle® Frictions
028752BHP	Friction Module - A518 / A618	94-97	Red Eagle® Frictions
028752DHP	Friction Module - A518 / A618	98-02	Red Eagle® Frictions
028752FHP	Friction Module - A618 / 48RE	03-On	Red Eagle® Frictions

Steel Modules

ALTO No.	Description	Year	Notes
028753HP	Steel Module - TF8, A727	71-97	Kolene® Steels
028753AHP	Steel Module - A518	90-93	Kolene® Steels

HI-PERFORMANCE PRODUCTS

CHRYSLER TF8, A727 (36RH, 37RH) 1962-97

A518 1990-On, A618 1994-On

Steel Modules

ALTO No.	Description	Year	Notes
028753BHP	Steel Module - A518 / A618	94-97	Kolene® Steels
028753DHP	Steel Module - A518 / A618	98-02	Kolene® Steels
028753FHP	Steel Module - A618 / 48RE	03-On	Kolene® Steels

Friction Clutches - Red Eagle®

ALTO No.	Description	Spec	Year	Qty	Notes
028740	Front - All	.095	90-97	3-4	Red Eagle® - 62T - OD: 6.700" - SM
028740PL	Front - All	.095	90-97	3-4	Red Eagle® - 62T - OD: 6.700" - PL
028740A	Front - All	.085	98-On	3-4	Red Eagle® - 62T - OD: 6.700" - SM
028740APL	Front - All	.085	98-On	3-4	Red Eagle® - 62T - OD: 6.700" - PL
028742	Rear	.061	90-On	4	Red Eagle® - 62T - OD: 6.700" - SM
028742A155	Rear	.061	90-On	4	Red Eagle® - 62T - OD: 6.700" - PL
028748-160	Rear - 48RE	.063	03-On	4	Red Eagle® - 93T - OD: 6.700" - PLNI
027744	Overdrive Direct	.063	90-On	8-9	Red Eagle® - 54T - OD: 5.475" - SM
027746	Overdrive Brake	.087	90-On	2-4	Red Eagle® - 54T - OD: 6.077" - SM
027746-165	Overdrive Brake - PowerPack® component	.065	90-On	7	Red Eagle® - 54T - OD: 6.077" - SM

Friction Clutch Unit Packs (One Rebuild)

ALTO No.	Description	Spec	Year	Qty	Notes
028740UP4	UNIT PACK - Front	.095	90-97	1	4 Red Eagle® Friction
028740AUP4	UNIT PACK - Front	.085	98-On	1	4 Red Eagle® Friction
028742UP4	UNIT PACK - Rear	.061	90-On	1	4 Red Eagle® Friction
027744UP8	UNIT PACK - Overdrive Direct	.063	90-On	1	8 Red Eagle® Friction
027746UP5	UNIT PACK - Overdrive Brake	.087	90-On	1	5 Red Eagle® Friction

Steel Clutches & Kolene® Clutches

ALTO No.	Description	Spec	Year	Qty	Notes
028701K	Front	.068	90-97	AR	Kolene® - 12T - ID: 5.342"
028701K	Rear	.068	62-97	4/4	Kolene® - 12T - ID: 5.342"
028701K216	Front & Rear	.085	98-On	AR	Kolene® - 12T - ID: 5.342"
028701K200	Front & Rear - selective	.079	90-On	AR	Kolene® - 12T - ID: 5.342"
027721K	Overdrive Direct	.069	90-On	7-8	Kolene® - 12T - ID: 4.685"
027721AK137	Overdrive Direct - A618	.053	98-On	9	Kolene® - 12T - ID: 4.685"
027723K	Overdrive Brake	.068	90-On	3-4	Kolene® - 12T - ID: 5.024"

Steel Clutch Unit Packs (One Rebuild)

ALTO No.	Description	Spec	Year	Qty	Notes
028701KUP4	Front or Rear	.068	90-97	1	4 Kolene® Steel

OEI® Original Equipment Improvements

ALTO No.	Description	Spec	Year	Qty	Notes
028755	PowrPack® - Front TF8, A518, A618		62-On	1	
028756	PowrPack® - Rear A518, A618		90-02	1	
028756A	PowrPack® - Rear A618 48RE		03-On	1	
028757	PowrPack® - A518/A618 48RE Overdrive Brake		90-On	1	

Bands - Red Eagle® or Kevlar®

ALTO No.	Description	Spec	Year	Qty	Notes
028963	Front - Heavy Duty Wide (2.175") Semi-Rigid	2.175	71-On	1	Red Eagle®

HI-PERFORMANCE PRODUCTS

CHRYSLER 45RFE, 545RFE

1999-On

Master Kits

ALTO No.	Description	Year	Notes
128901XHP	Master Kit without Molded Pistons	99-On	1-128800XF, 1-128752HP, 1-128753HP

Banner Kits

ALTO No.	Description	Year	Notes
128901XHPLS	Banner Kit without Molded Pistons	99-On	1-128800XF, 1-128752HP

Overhaul Kits

ALTO No.	Description	Year	Notes
128800XF	Overhaul Kit contains Farpak Pan Gasket without Molded Pistons	99-On	

Friction & Steel Modules

ALTO No.	Description	Year	Notes
128750HP	Friction/Steel Module	99-On	Red Eagle® Frictions, Kolene® Steels

Friction Modules

ALTO No.	Description	Year	Notes
128752HP	Friction Module	99-On	Red Eagle® Frictions

Steel Modules

ALTO No.	Description	Year	Notes
128753HP	Steel Module	99-On	Kolene® Steels

Friction Clutches - Red Eagle®

ALTO No.	Description	Spec	Year	Qty	Notes
128740-200	Underdrive	.078	99-On	4	Red Eagle® - 32T - OD: 6.364" - PL
128740A230	Overdrive	.090	99-On	4	Red Eagle® - 32T - OD: 6.364" - SB
128740B200	Reverse	.078	99-On	2	Red Eagle® - 32T - OD: 6.364" - PL
128742-230	2nd	.090	99-On	2	Red Eagle® - 40T - OD: 8.107" - SB
128744-230	4th	.090	99-On	3	Red Eagle® - 24T - OD: 5.331" - SB
128746-200	Low / Reverse	.078	99-On	6	Red Eagle® - 32T - OD: 6.844" - PL

Steel Clutches & Kolene® Clutches

ALTO No.	Description	Spec	Year	Qty	Notes
128701K170	Underdrive	.068	99-On	4	Kolene® - 12T - ID: 5.400"
128701K220	Overdrive	.086	99-On	3-4	Kolene® - 12T - ID: 5.400"
128701K170	Reverse	.068	99-On	1-2	Kolene® - 12T - ID: 5.400"
128703K323	2nd	.127	99-On	2	Kolene® - 10T - ID: 6.771"
128705K250	4th	.099	99-On	3	Kolene® - 20T - ID: 4.239"
128707K170	Low / Reverse	.078	99-On	6	Kolene® - 45T - ID: 5.697"

OEI® Original Equipment Improvements

ALTO No.	Description	Spec	Year	Qty	Notes
128755	PowrPack® - Underdrive / Overdrive		99-On	1	
128757	PowrPack® - 2nd clutch		99-On	1	
128758	PowrPack® - 4th clutch		99-On	1	

HI-PERFORMANCE PRODUCTS

BORG WARNER T35, TA, TB, TC, T37 (UK) 1962-On
T65, 66 (UK). BW40/51 1971-On

Friction Clutches - Red Eagle®

ALTO No.	Description	Spec	Year	Qty	Notes
029740	Front & Rear	.061	62-On	4-5	Red Eagle® - 36T - OD: 4.248" - SM

Steel Clutches & Kolene® Clutches

ALTO No.	Description	Spec	Year	Qty	Notes
029701K	Front & Rear	.068	62-On	4-5	Kolene® - 44T - ID: 3.134"

A40 SERIES 72-On, AW55 / BW55 1974-81
AW70, 71, 72 4 SPEED 1981-87

Master Kits

ALTO No.	Description	Year	Notes
044901HP	Master Kit	72-On	1-044800, 1-044752HP, 1-044753HP

Banner Kits

ALTO No.	Description	Year	Notes
044901HPLS	Banner Kit	72-On	1-044800, 1-044752HP

Friction Modules

ALTO No.	Description	Year	Notes
044752HP	Friction Module	72-On	Red Eagle® Frictions

Steel Modules

ALTO No.	Description	Year	Notes
044753HP	Steel Module	72-On	Kolene® Steels

Friction Clutches - Red Eagle®

ALTO No.	Description	Spec	Year	Qty	Notes
044740	All except Low / Reverse	.091	74-81	AR	Red Eagle® - 24T - OD: 5.00" - SM
044742	Low / Reverse	.091	74-81	4-5	Red Eagle® - 16T - OD: 5.00" - SM

Friction Clutch Unit Packs (One Rebuild)

ALTO No.	Description	Spec	Year	Qty	Notes
044740UP4	UNIT PACK - All except Low / Reverse	.091	74-81	1	4 Red Eagle® Friction
044742UP5	UNIT PACK - Low / Reverse	.091	74-81	1	5 Red Eagle® Friction

Steel Clutches & Kolene® Clutches

ALTO No.	Description	Spec	Year	Qty	Notes
044701K180	Forward or Direct	.071	74-81	3-4	Kolene® - 8T - ID: 4.012"
044705K180	Intermediate or Overrun	.071	74-81	3/1	Kolene® - 8T - ID: 4.012"
044703K180	Low / Reverse	.071	74-81	4	Kolene® - 15T - ID: 4.012"

Steel Clutch Unit Packs (One Rebuild)

ALTO No.	Description	Spec	Year	Qty	Notes
044701KUP4	UNIT PACK - Forward or Direct	.071	74-81	1	4 Kolene® Steel
044705KUP4	UNIT PACK - Intermediate or Overrun	.071	74-81	1	4 Kolene® Steel
044703KUP4	UNIT PACK - Low / Reverse	.071	74-81	1	4 Kolene® Steel

HI-PERFORMANCE PRODUCTS

*HONDA 4 SPEED 1984-On
2 SHAFT, 3 SHAFT (110mm Clutch)*

Friction Clutches - Red Eagle®

ALTO No.	Description	Spec	Year	Qty	Notes
058740-190	1st, 2nd, 3rd, 4th	.075/1.9	84-On	AR	Red Eagle® - 41T - OD: 4.323" - SM
058744-198	Low-Hold	.078/2.0	89+	AR	Red Eagle®

Steel Clutches & Kolene® Clutches

ALTO No.	Description	Spec	Year	Qty	Notes
058711K200	1st, 2nd, 3rd, 4th	.078/2.0	84-On	AR	Kolene® - 8T - ID: 3.230"
058713AK160	1st - L4, ML4A, P1	.063/1.6	88-91	3	Kolene® - 8T - ID: 3.230"
058713AK200	2nd, 3rd, 4th - Civic	.079/2.0	96-On	AR	Kolene® - 18T - ID: 3.229"
058725K200	Low-Hold	.078/2.0	92-97	3	Kolene® - 18T - ID: 2.800"

*MAZDA, GM, FORD, ISUZU NISSAN F3A 1981-97, N4AEL, N4AHL, NC4AEL
1986-97*

3N71B, L3N71B 1971-87 E4N71B, L4N71B 1983-93

Friction Clutches - Red Eagle®

ALTO No.	Description	Spec	Year	Qty	Notes
042740	Forward, Direct, & Overdrive	.061/1.55	86-97	AR	Red Eagle® - 44T - OD: 4.530" - SM

*MAZDA R4AEL, RA4AEL, RB4AEL
1988-99*

Friction Clutches - Red Eagle®

ALTO No.	Description	Spec	Year	Qty	Notes
075742	High - Red Eagle® PowerPack® Component	.063/1.6	88-99	4-5	Red Eagle® - 30T - OD: 5.233" - PL
075706-190	DrumSaver® Comp. - Reverse narrow	.075/1.9	88-90	AR	Tan - 34T - OD: 5.880" - PL
075706A190	DrumSaver® Comp. - Reverse wide	.075/1.9	91-99	AR	Heg - 30T - OD: 5.880" - PL

Steel Clutches & Kolene® Clutches

ALTO No.	Description	Spec	Year	Qty	Notes
075703K170	High - except 929 - KOLENE®	.067/1.7	88-99	opt.	Kolene® - 27T - ID: 4.414"
075713K200	High - 929 - Kolene®	.078/2.0	94-95	5	Kolene® - 27T - ID: 4.414"
075707-170	DrumSaver® Comp. - Reverse narrow	.067/1.7	88-90	AR	30T - ID: 5.356"
075707A170	DrumSaver® Comp. - Reverse wide	.067/1.7	91-99	AR	30T - ID: 5.084"
075707XW	DrumSaver® Comp. - All (replaces belleville spring)		88-99	1	5T - ID: 5.355"

OEI® Original Equipment Improvements

ALTO No.	Description	Spec	Year	Qty	Notes
075758	DrumSaver® Kit - Reverse Drum		88-90	1	34T Friction
075758A	DrumSaver® Kit- Reverse Drum		91-99	1	30T Friction
075757HP	DrumSaver® - High Drum		88-99	1	

HI-PERFORMANCE PRODUCTS

MITSUBISHI, HYUNDAI, CHRYSLER
KM SERIES 1979-On

Friction Clutches - Red Eagle®

ALTO No.	Description	Spec	Year	Qty	Notes
059746-150	End (Overdrive) - PowerPack® Comp.	.059/1.5	85-On	AR	Red Eagle® - 40T - OD: 4.839" - PL

Steel Clutches & Kolene® Clutches

ALTO No.	Description	Spec	Year	Qty	Notes
059713K120	Overdrive - PowerPack® Component	.047/1.2	85-On	AR	Kolene® - 25T - ID: 4.162"
059713K080	Overdrive - PowerPack® Component	.032/.81	85-On	AR	Kolene® - 25T - ID: 4.162"

OEI® Original Equipment Improvements

ALTO No.	Description	Spec	Year	Qty	Notes
059757	PowerPack® - Overdrive Anti-Warp kit		85-On	1	clutches only

MITSUBISHI, HYUNDAI, CHRYSLER
F4A33, F4A33EV, W4A33 1991-On

Master Kits

ALTO No.	Description	Year	Notes
108901HP	Master Kit - F4A33 (2wd) with OD Anti-Warp	91-On	1-108800F, 1-108750HP, 1-059835
108903HP	Master Kit - W4A33 (4wd) with OD Anti-Warp	91-On	1-108802F, 1-108750HP, 1-059835
059935PWR	Rebuilding Kit - F4A33/W4A33 Overdrive Clutch only	91-On	1-059835, 1-059757

Overhaul Kits

ALTO No.	Description	Year	Notes
108800F	Overhaul Kit - F4A33 (2wd) w/Farpak Gasket	91-On	
108802F	Overhaul Kit - W4A33 (4wd) w/Farpak Gasket	91-On	
059835	Ring & Seal Kit - Overdrive Clutch Only	91-On	

Friction & Steel Modules

ALTO No.	Description	Year	Notes
108750HP	Friction & Steel Module - F4A33, W4A33	91-On	Red Eagle® Frictions & Kolene® Steels
059757	Friction & Steel Module - Overdrive Anti-Warp Clutch Only	91-On	Red Eagle® Frictions & Kolene® Steels

Friction Clutches - Red Eagle®

ALTO No.	Description	Spec	Year	Qty	Notes
108740-170	Front (Direct) except F4A33EV	.067/1.7	91-On	4	Red Eagle® - 38T - OD: 5.430" - PL
108740-152	Front (Direct) PowerPack® Component	.059/1.5	91-On	AR	Red Eagle® - 38T - OD: 5.430" - PL
108742-170	Rear (Forward) except F4A33EV	.067/1.7	91-On	5	Red Eagle® - 42T - OD: 5.430" - PL
108744-170	Low / Reverse - all	.067/1.7	91-On	5-6	Red Eagle® - 54T - OD: 6.205" - PL
059746-150	End (Overdrive) - PowerPack® Component	.059/1.5	91-On	AR	Red Eagle® - 40T - OD: 4.839" - PL

Steel Clutches & Kolene® Clutches

ALTO No.	Description	Spec	Year	Qty	Notes
108701K220	Front (Direct) except F4A33EV	.088/2.2	91-On	3	Kolene® - 26T - ID:4.115/OD:5.693
108701K152	Front (Direct) PowerPack® Component	.059/1.2	91-On	AR	Kolene® - 26T - ID: 4.115 / OD: 5.693
108701K380	Front (Direct) PowerPack® Component	.150/3.8	91-On	AR	Kolene® - 26T - ID: 4.115 / OD: 5.693
108703K180	Rear (Forward) except F4A33EV	.071/1.8	91-On	5	Kolene® - 26T - ID:4.363/OD:5.693
108705K100	Low / Reverse - all	.039/1.0	91-On	5-6	Kolene® - 20T - ID: 5.540"
059713K120	End (Overdrive) - PowerPack® Comp.	.047/1.2	91-On	AR	Kolene® - 25T - ID: 4.162"
059713K080	End (Overdrive) - PowerPack® Comp.	.032/.81	91-On	AR	Kolene® - 25T - ID: 4.162"

HI-PERFORMANCE PRODUCTS

MITSUBISHI, HYUNDAI, CHRYSLER
F4A33, F4A33EV, W4A33 1991-On

OEI® Original Equipment Improvements

ALTO No.	Description	Spec	Year	Qty	Notes
059757	PowerPack® - Overdrive Anti-Warp Kit		91-On	1	Clutches only
108754	PowerPack® - Direct		91-On	1	Hi Performance

Bands - Red Eagle® or Kevlar®

ALTO No.	Description	Spec	Year	Qty	Notes
108960	Kickdown	Red	91-On	1	Red Eagle®

NISSAN RE4R01A
1987-On

Bands - Red Eagle® or Carbonite®

ALTO No.	Description	Spec	Year	Qty	Notes
075961C	RE4R01A 2-4 Heavy Duty Carbonite® Wide	Crb	87-On	1	Carbonite®

NISSAN RG4R01A
1988-On

Friction Clutches - Red Eagle®

ALTO No.	Description	Spec	Year	Qty	Notes
106742-160	Hi Clutch	.063/1.6	88-On	AR	Red Eagle® - 64T - OD: 6.140" - SM

HI-PERFORMANCE PRODUCTS

NISSAN RE5R05A A5SR1/2

2002-On

Master Kits

ALTO No.	Description	Year	Notes
174903HPPWR	Master Kit without Molded Pistons	02-On	1-174800X, 1-174750BHPPWR

Overhaul Kits

ALTO No.	Description	Year	Notes
174800X	Overhaul Kit without Molded Pistons	02-On	

Friction Steel Modules

ALTO No.	Description	Year	Notes
174750BHPPWR	Friction Module	02-On	Red Eagle® Frictions & Kolene® Steels

OEI® Original Equipment Improvements

ALTO No.	Description	Year	Notes
174756	PowerPack® - Input Clutch	02-On	Red Eagle® Frictions & Kolene® Steels
174757	PowerPack® - Direct Clutch	02-On	Red Eagle® Frictions & Kolene® Steels

Friction Clutches - Red Eagle®

ALTO No.	Description	Spec	Year	Qty	Notes
174746-152	K-1 Input - PowerPack Clutch	.060/1.52	02-On	7	Red Eagle® - 60T - OD: 6.349" - PLNI
174742-160	K-2 Hi - Lo Rev	.063/1.6	02-On	7	Red Eagle® - 30T - OD: 4.900" - PLNI
174744A162	B-1 Reverse Brake	.064/1.63	02-On	7	Red Eagle® - 40T - OD: 6.596" - PLNI
174746A160	B-2 Low Coast	.063/1.6	02-On	4	Red Eagle® - 30T - OD: 5.200" - PLNI
174748-155	B-3 Forward	.061/1.55	02-On	5	Red Eagle® - 39T - OD: 5.700" - PLNI
174740-150	Direct - PowerPack Clutch	.059/1.5	02-On	8	Red Eagle® - 24T - OD: 6.252" - PLNI

Steel Clutches & Kolene® Clutches

ALTO No.	Description	Spec	Year	Qty	Notes
174701K170	K-1 Input - PowerPack Clutch	.067/1.7	02-On	8	Kolene® - 24T - ID: 5.684"
174703AK240	K-2 Hi - Lo Rev, SUV, Truck	.094/2.4	02-On	5	Kolene® - 24T - ID: 3.741"
174705AK160	B-1 Reverse Brake - SUV, Truck	.063/1.6	02-On	7	Kolene® - 18T - ID: 5.930"
174707AK157	B-2 Low Coast - SUV, Truck	.062/1.57	02-On	1	Kolene® - 16T - ID: 4.441"
174707BK178	B-2 Low Coast - SUV, Truck	.070/1.78	02-On	3	Kolene® - 15T - ID: 4.441"
174709AK157	B-3 Forward - SUV, Truck	.062/1.57	02-On	5	Kolene® - 16T - ID: 4.893"
174711K150	Direct - PowerPack Clutch	.059/1.5	02-On	8	Kolene® - 24T - ID: 5.537"

Pressure Plates

ALTO No.	Description	Spec	Year	Qty	Notes
174761	Input - PowerPack Clutch	.172/4.36	02-On	1	24T - ID: 5.684"

HI-PERFORMANCE PRODUCTS

TOYOTA/VOLVO A340 SERIES, AW30-40
1985-On

Master Kits

ALTO No.	Description	Year	Notes
073901HP	Master Kit	Var.	1-073800, 1-073752HP, 1-073753

Banner Kits

ALTO No.	Description	Year	Notes
073901HPLS	Banner Kit	Var.	1-073800, 1-073752HP

Overhaul Kits

ALTO No.	Description	Year	Notes
073800	Overhaul Kit	Var.	

Friction Modules

ALTO No.	Description	Year	Notes
073752HP	Friction Module	Var.	Red Eagle® Frictions

Steel Modules

ALTO No.	Description	Year	Notes
073753	Steel Module (Non-Kolene® Steels)	Var.	

Friction Clutches - Red Eagle®

ALTO No.	Description	Spec	Year	Qty	Notes
073740	Forward - Cars except SC/LS400 & Turbo	.083/2.1	85-On	4-5	Red Eagle® - 40T - OD: 4.973" - SM
073740A	Forward - Trucks with V6 & Turbo	.067/1.7	93-On	3-5	Red Eagle® - 40T - OD: 4.973" - SM
073742	Direct	.083/2.1	85-On	3-4	Red Eagle® - 40T - OD: 5.178" - SM
073744	2nd Brake	.078/2.0	85-On	4-5	Red Eagle® - 32T - OD: 5.178" - SM
073746	Low / Reverse	.067/1.7	85-On	5-7	Red Eagle® - 32T - OD: 5.092" - SM
073748	Overdrive Direct	.083/2.1	85-On	2	Red Eagle® - 32T - OD: 4.973" - SM
073749	Overdrive Brake	.083/2.1	85-On	3-5	Red Eagle® - 24T - OD: 6.529" - SM

Friction Clutch Unit Packs (One Rebuild)

ALTO No.	Description	Spec	Year	Qty	Notes
073740UP5	UNIT PACK - Forward	.083/2.1	85-On	1	5 Red Eagle® Friction
073740AUP6	UNIT PACK - Forward	.067/1.7	93-On	1	6 Red Eagle® Friction
073742UP4	UNIT PACK - Direct	.083/2.1	85-On	1	4 Red Eagle® Friction
073746UP7	UNIT PACK - Low / Reverse	.067/1.7	85-On	1	7 Red Eagle® Friction
073748UP2	UNIT PACK - Overdrive Direct	.083/2.1	85-On	1	2 Red Eagle® Friction
073744UP5	UNIT PACK - 2nd Brake	.078/2.0	85-On	1	5 Red Eagle® Friction
073749UP5	UNIT PACK - Overdrive Brake	.083/2.1	85-On	1	5 Red Eagle® Friction

Steel Clutches & Kolene® Clutches

ALTO No.	Description	Spec	Year	Qty	Notes
073703K	Direct	.091/2.3	85-99	1/4	Kolene® - 6T - ID: 4.152"
073703AK	Direct	.071/1.8	93-99	3-4	Kolene® - 6T - ID: 4.152"
073723K	Direct	.118/3.0	87-99	4	Kolene® - 16T - ID: 4.152"
073705K	2nd Brake	.071/1.8	85-On	1	Kolene® - 16T - ID: 4.152"
073725K	2nd Brake	.098/2.5	85-On	4	Kolene® - 16T - ID: 4.152"

HI-PERFORMANCE PRODUCTS

TOYOTA - A440F 1985-92

TOYOTA - A442F 1993-95

Friction Modules

ALTO No.	Description	Year	Notes
083752HP	Friction Module	Var.	Red Eagle® Frictions

Steel Modules

ALTO No.	Description	Year	Notes
083753HP	Steel Module	Var.	Kolene® Steels

Friction Clutches - Red Eagle®

ALTO No.	Description	Spec	Year	Qty	Notes
083740	Forward (front), Direct (rear), Overdrive direct	.083/2.1	85-95	15	Red Eagle® - 46T - OD: 4.987" - SM
083742	2nd Brake (intermediate)	.083/2.1	85-95	4-5	Red Eagle® - 70T - OD: 6.887" - SM
083744	Low / Reverse	.067/1.7	85-95	6	Red Eagle® - 70T - OD: 6.887" - SM
083746	Overdrive Direct	.083/2.1	85-95	3	Red Eagle® - 47T - OD: 4.987" - SM
083748	Overdrive Brake	.083/2.1	85-95	3	Red Eagle® - 20T - OD: 7.229" - SM

Steel Clutches & Kolene® Clutches

ALTO No.	Description	Spec	Year	Qty	Notes
083701K180	Forward (front), Direct (rear), Overdrive Direct	.071/1.8	85-95	18	10T - ID: 3.997"
083703AK240	Overdrive Brake	.095/2.4	85-95	3	6T - ID: 6.402"
083703K200	2nd Brake (intermediate)	.078/2.0	85-95	4	6T - ID: 5.995"
083705K240	Low/Reverse	.095/2.4	85-95	6	16T - ID: 6.000"
083711K200	Overdrive Direct	.078/2.0	85-95	3	20T - ID: 4.048"

TOYOTA - A750E, A750F

2003-On

Master Kits

ALTO No.	Description	Year	Notes
173901XHP	Master Kit (without Molded Pistons)	03-On	1-173802X, 1-173752HP, 1-173753HP

Banner Kits

ALTO No.	Description	Year	Notes
173901XHPLS	Banner Kit (without Molded Pistons)	03-On	1-173802X, 1-173752HP

Overhaul Kits

ALTO No.	Description	Year
173802X	Overhaul Kit (without Molded Pistons)	03-On

Friction Modules

ALTO No.	Description	Year	Notes
173752HP	Friction Module	03-On	Red Eagle® Frictions

Steel Modules

ALTO No.	Description	Year	Notes
173753HP	Steel Module	03-On	Kolene® Steels

Friction Clutches - Red Eagle®

HI-PERFORMANCE PRODUCTS

TOYOTA - A750E, A750F
2003-On

Friction Clutches - Red Eagle®

ALTO No.	Description	Spec	Year	Qty	Notes
173740-150	Direct	.059/1.5	03-On	5	Red - 36T - OD: 6.372" - SB
173742-150	Rear	.059/1.5	03-On	5	Red - 40T - OD: 6.372" - SB
173744-190	Forward	.075/1.9	03-On	6	Red - 30T - OD: 4.712" - SB
188744-190	#3 Brake - narrow spline	.074/1.88	05-On	4	Red - 40T - OD: 6.439" - WF
173748-180	#1 Brake	.072/1.83	03-On	3	Red - 40T - OD: 6.233" - SB
173741-150	#2 Brake	.061/1.55	03-On	3	Red - 40T - OD: 5.444" - SB
173743-150	#4 Brake	.061/1.55	03-On	8	Red - 48T - OD: 5.528" - PLNI

Steel Clutches & Kolene® Clutches

ALTO No.	Description	Spec	Year	Qty	Notes
173701K180	Direct & Rear	.071/1.8	03-On	6-10	Kolene® - 24T - ID: 5.866"
173701K240	Rear	.095/2.41	03-On	4	Kolene® - 24T - ID: 5.866"
173705K180	Forward	.071/1.8	03-On	5	Kolene® - 24T - ID: 4.173"
173707K200	#3 Brake	.079/2.01	03-On	4	Kolene® - 16T - ID: 5.194"
173709K240	#1 Brake	.094/2.39	03-On	3	Kolene® - 13T - ID: 5.527"
173711K200	#2 Brake	.079/2.01	03-On	3	Kolene® - 13T - ID: 4.537"
173713K180	#4 Brake	.071/1.8	03-On	7	Kolene® - 16T - ID: 4.922"

VOLKSWAGEN AUDI 095 (AG-4)
095, 096, 097, 098 (AG4), 01M, 01N, 01P 1989-On

Friction Clutches - Red Eagle®

ALTO No.	Description	Spec	Year	Qty	Notes
109746-160	K3 (3 - 4 Clutch)	.063/1.6	89-95	4-6	Red Eagle® - 22T - OD: 3.771" - PLNI
109746A160	K3 (3 - 4 Clutch)	.063/1.6	96-On	3-4	Red Eagle® - 22T - OD: 4.057" - PL

Steel Clutches & Kolene® Clutches

ALTO No.	Description	Spec	Year	Qty	Notes
109701K	K1 (Forward)	.079/2.0	89-95	4-5	Kolene® - 32T - ID: 4.095"
109701K145	K1 (Forward)	.057/1.45	96-On	4-5	Kolene® - 32T - ID: 4.095"
109701K	K2 (Reverse)	.079/2.0	89-On	5	Kolene® - 32T - ID: 4.095"
109717K145	K3 (3 - 4 Clutch)	.057/1.45	96-On	3-4	Kolene® - 28T - ID: 2.835"

OEI® Original Equipment Improvements

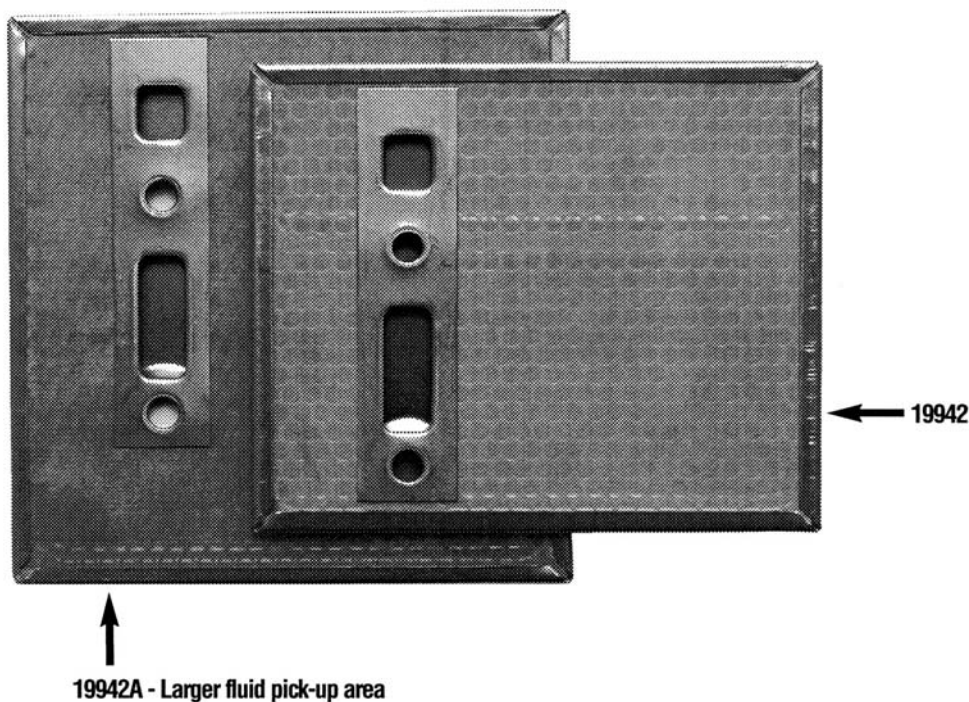
ALTO No.	Description	Spec	Year	Qty	Notes
109757	PowerPack® - K-3 (3-4 Clutch) 01M, 01N		96-On	1	
109757A	PowerPack® - K-3 (3-4 Clutch) 01P		96-On	1	

AltoUpdate...

MAKE	TRANSMISSION	APPLICATION	YEAR
GM	Powerglide	Filter	62-73
DESCRIPTION & NOTES...			

New design larger filter for GM Racing Powerglide...

Alto Products Corp has available a larger filter for the GM Racing Powerglide. This larger old style square brass filter allows for more fluid pick-up than with the smaller, rectangular filter.



ALTO #	DESCRIPTION
019942A	Larger old style square brass screen filter, providing a larger area of fluid pick-up.
Pricing Effective August 18, 2006	
1-99 \$1.76 ea	100+ \$1.50 ea

One Alto Way • Atmore, AL • 36502 • 251.368.7777 • Fax 251.368.7774 • www.altoUSA.com
Clutches and Gears for Automatic and Standard Transmissions

0608002



© Alto Products Corp.

AltoUpdate...

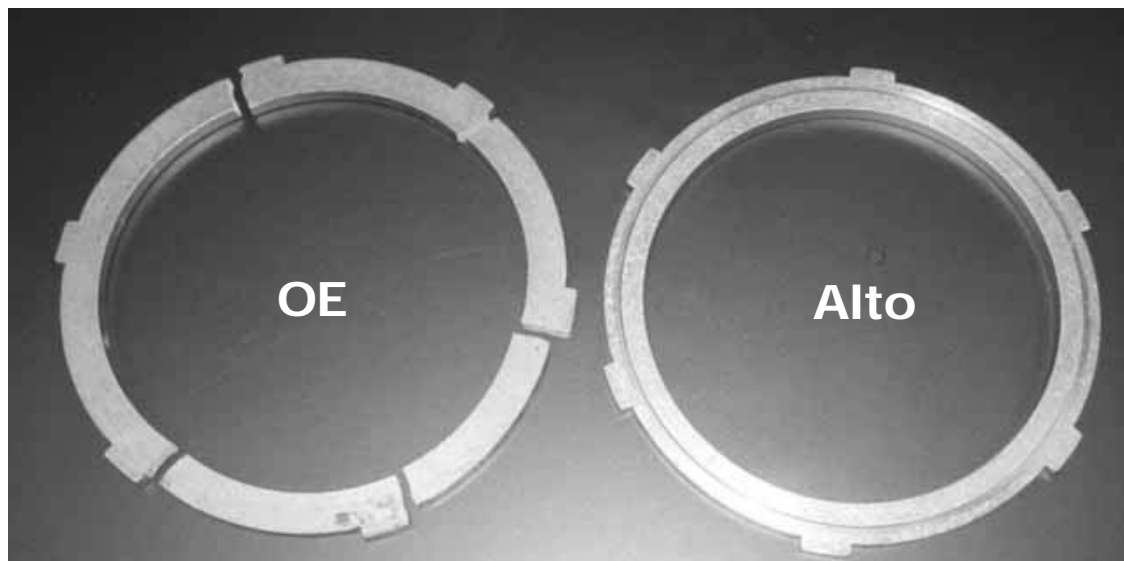
MAKE	TRANSMISSION	APPLICATION	YEAR
GM	Racing Aluminum Powerglide	Reverse	1962-73
DESCRIPTION & NOTES...			

High Quality Steel Reverse Pressure Plate Eliminates Fractures...

Alto #019761A800 provides a more durable material for the friction plate.

The OE Powerglide reverse pressure plate is made of powdered metal. This material is widely accepted in the OE arena because of its ability to produce intricate dimensions with very accurate results; however, in a racing application this pressure plate can fracture. When this takes place, in most vehicles the result is no trans brake and no reverse. This is very undesirable.

Alto has tooled and is producing a high quality steel replacement reverse pressure plate. With this High Carbon steel pressure plate in place, the possibility of a fracture is eliminated, preventing dramatic events. One less thing to keep you up at night.



One Alto Way • Atmore, AL • 36502 • 251.368.7777 • Fax 251.368.7774 • www.altoUSA.com
Clutches and Gears for Automatic and Standard Transmissions



© Alto Products Corp.

AltoUpdate...

MAKE	TRANSMISSION	APPLICATION	YEAR
GM	TH700-R4	SERVO PIN (MODIFIED)	82-On
DESCRIPTION & NOTES...			

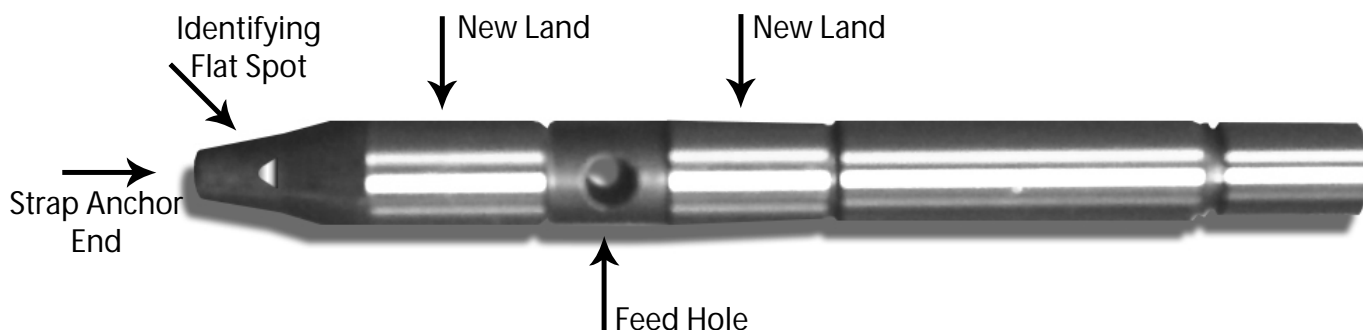
New! Original Equipment Improvement® Servo Pin (Modified) Alto #057301...

Problem:

When rebuilding the 4L60 / 4L60E / 4L65E / 4L70E you may encounter clearance problems with the 2-4 band. Due to drum changes, band changes and case changes there may be too much or too little clearance. GM has three size pins, but the longest may not be long enough.

Solution:

Alto now offers an OEI® Servo Pin (Modified) #057301 that is extra long and hardened. This pin can be ground to length to meet the specification. The new pin also offers new lands to make a better seal between the case and pin. The Alto pin is identified by a small flat spot ground into the strap anchor end.



Contact your Alto Sales Representative for more information about or to order Alto Original Equipment Improvement® Servo Pin (Modified) #057301.

One Alto Way • Atmore, AL • 36502 • 251.368.7777 • Fax 251.368.7774 • www.altoUSA.com
Clutches and Gears for Automatic and Standard Transmissions

0606001



© Alto Products Corp.



OEI® Products from Alto...

Powerpacks®

General Motors

019755HP Powerglide Front Hi-Perf 62-73
019756 Powerglide High CI Hi-Perf 62-73
019757 Powerglide Front Anti-Drag Hi-Perf 62-73
019758 Powerglide Reverse Anti-Drag Hi-Perf 62-73
031755HP TH400 Forward Hi-Perf 64-95
031756HP TH400 Direct Hi-Perf 64-95
031757HP TH400 Intermed Hi-Perf 64-95
031755AHP 4L80E Forward Hi-Perf 90+
031756HP 4L80E Direct Hi-Perf 90+
031757AHP 4L80E Intermed Hi-Perf 90+
043757 TH200, 200C, 4R Direct Hi-Perf 76-90
057757B TH700-R4 3-4 Clutch 82+
057757BHP TH700-R4 3-4 CI Hi-Perf 82+
057757C TH700-R4 3-4 Clutch K2® 82+
062759 4T65E 2nd, 3rd & Forward Clearance Pack

Ford

025755A C-4 Reverse Hi-Perf 64-81
025755 C-5 Reverse Hi-Perf 82-86
026755 C-6, 4R100 Forward Hi-Perf 66+
026757 C-6, E4OD Direct 66+
026759 E4OD Clearance Pack 89+
041756 A4LD Reverse/High CI 85+
049750A AOD Direct CI 80-91
049750AHP AOD Direct CI Hi-Perf 80-91
049754A AOD-E Direct GROB 91+
049754AHP AOD-E Direct GROB Hi-Perf 91+
049756HP AOD, AOD-E Intermed Hi-Perf 80+
049758 AOD Reverse 80-91
049758A AOD, AOD-E Reverse GROB Hi-Perf 91+
166756 5R110W Forward 03-04
166756A 5R110W Forward 05+
166757 5R110W Direct 03+

Chrysler

045755 A413, A470, A670 Forward Hi-Perf 81+
045756 A413, A470, A670 Reverse Hi-Perf 81+
077757 A604, A606 Overdrive Hi-Perf 90-96
077757A A604, A606 Overdrive Hi-Perf 97+

Mitsubishi

108754 F4A Direct Hi-Perf 91+
059935PWR KM Series Overdrive
Seal Kit and "Anti-Warp" Clutches 79+

Nissan

174756 RE5R05A Input Hi-Perf 02+
174757 RE5R05A Direct Hi-Perf 02+

Z F

053755 ZF3HP22, ZF4HP22 A Clutch 76-94
053758 ZF4HP22 E Clutch Overdrive 76-94

ShaftSavers®

General Motors

062758 TH440-T4 4th Clutch 83-93
062758A 4T60E 4th Clutch 87-92
062758B 4T60E 4th Clutch 93+

Powerbands®

General Motors - Powerglide

019961 Front Wide Red Eagle® Heavy Duty 55-73
019961C Front Wide Carbonite® Super Duty 55-73

General Motors - TH700-R4, 4L60, E

057961 Wide Red Eagle® Heavy Duty 82+
057961C Wide Carbonite® Super Duty 82+

General Motors - TH200, 200C

043961 Wide Red Eagle® Heavy Duty 76-90
043961K Wide Kevlar® Super Duty 76-90

Ford - C-6

026968 Front Wide Red Eagle® Heavy Duty 66-96
026968K Front Wide Kevlar® Super Duty 66-96

Chrysler - A404, A413, A670

045963 Kickdown Wide Red Eagle Heavy Duty 78+
045963C Kickdown Wide Carbonite® Super Duty 78+

Nissan - RE4R01A

075961C 2-4 Wide Carbonite® Super Duty 87+

DrumSavers®

General Motors

057758 4L60 Reverse Input 87+

Nissan/Mazda/Subaru

105757X Nissan RE4F04A Reverse 92+
068758 Nissan RE4F02A Reverse 85-96
075758 Nissan/Mazda RE4R01A Reverse 88-92
075758A Nissan/Mazda RE4R01A Reverse 93+
075757HP Niss/Maz/Sub RE4R01A High CI Hi-Perf 92+
074705XW Mazda Reverse Wave Spring 86+
081755 Mazda 4EAT-F Forward 90-99

Renault

109757B AR-4, AD-8 3-4 Clutch 88+

Volkswagen

109757 01M, 01N 3-4 Clutch 96+
109757A 01P 3-4 Clutch 96+
162757 Jatco JF506E Low 02+

CaseSavers®

General Motors

019300UP6 Powerglide Reverse Case
Saver Clips (6 per Pack) 62-73

Allison

055758 AT540 Series 2nd Range Case Saver Kit 70+
055758A AT540 Series 3rd Range Case Saver Kit 70+

Chrysler

077758 A604, A606 Low/Reverse Clutch Pack
With Case Saver Clips 90+

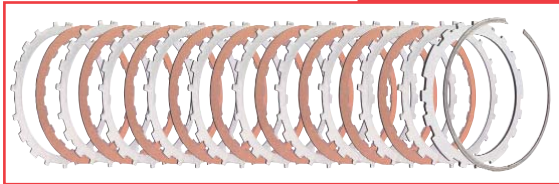
Not All Parts are OE Quality;

Some are Just a Little Better...



If the OEM part is just not good enough, request Alto Original Equipment Improvement (OEI™) parts. Alto has pioneered OEI™ replacement parts for over 20 years. Our innovative designs and aggressive research and development have produced more improvements and enhancements in clutch technology than all the competition combined.

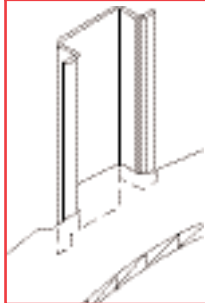
POWERPACKS®



Beginning with the first introduction of the TH700R4 extra capacity kit, Alto has been developing PowerPack® innovations for 20 years. Alto PowerPacks® have become the industry standard in hi-performance and heavy-duty applications. PowerPacks® are specially engineered clutch packs designed with additional clutches to increase friction plate capacity. This capacity increase enables torque load to spread over more friction area, resulting in a clutch pack that can handle higher torque load with reduced heat generation.

The spline of steel separator plates can work back and forth to permanently damage the case, causing delayed engagement and ATF metal contamination. Alto CaseSavers™ not only prevent this from happening again but allow reuse of the damaged case.

CASESAVERS™

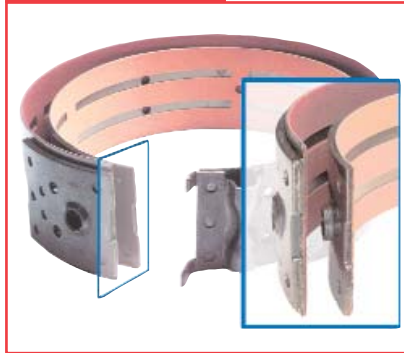


RED EAGLE® HI-PERFORMANCE



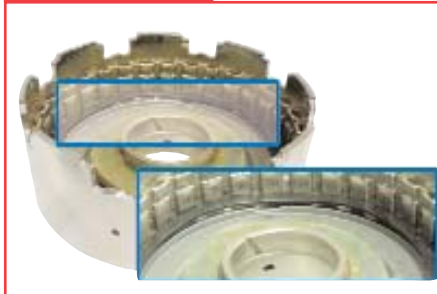
Innovations and enhancements make Alto the serious racers' choice. Alto is the leader in Hi-Performance technology with Kolene® Steels, Turbulator Steels, Anti-Drag™ Steels and Red Eagle® Frictions.

POWERBANDS®



PowerBands® enhance torque load and improve shift quality. They are designed wider than the original band to increase stopping capacity of up to 25%. Anchors have been increased in thickness and heat treated when required to eliminate premature failures.

DRUMSAVERS®



DrumSavers™ prevent the replacement of expensive drums. By installing Alto components further damage to the existing drum will be prevented, allowing the drum to perform as designed.

DrumSavers contain direct replacement parts for the OE stack-up of the damaged drum, and requires no machining.

ALTO PRODUCTS CORP.



Alto Products, an ISO 9002 Manufacturer, is the oldest and largest independently owned manufacturer of friction discs and steel separators in the world. For 50 years, Alto has supplied over a billion clutches specializing in product improvements and enhancement in clutch plate technology.

Atmore • AL • 36504 • 251.368.7777 • Fax: 251.368.7774 • altoUSA.com

