

AltoUpdate...

MAKE	TRANSMISSION	APPLICATION	YEAR
Chrysler	A604, A606	Low/Reverse Case Saver	1988-On

DESCRIPTION & NOTES...

Save the Transaxle Case by installing our Low/Reverse Clutch Pack Solution with Case Saver Clips Alto#077758...

Transmissions: A604, 40TE, 41TE, F4AC1, A606, 42LE

The Problem:

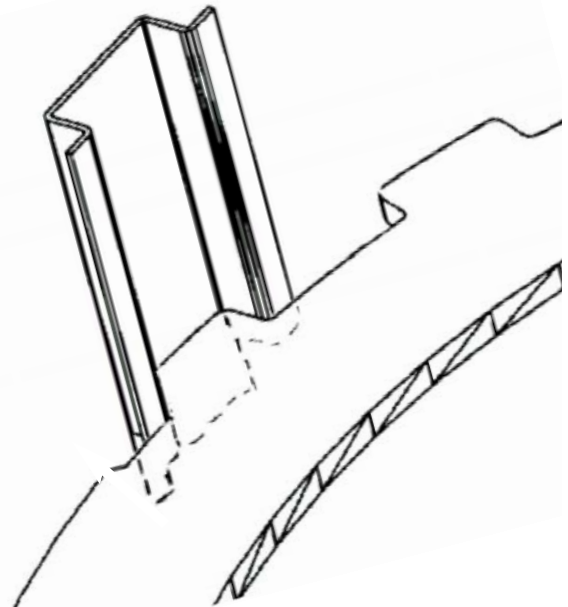
The low reverse clutch steel plates wear grooves into the case. This could cause the low reverse clutch to hang on the grooves resulting in delayed engagement or slide bump engagement. Also this introduces large amounts of aluminum particles into the hydraulic system of the transmission.

The Solution:

Install Alto Low/Rev Case Saver pack. The case savers are spring steel clips that fit into the case to give the steel plates a smooth hard surface to interact with. The case saver clips are designed to be installed into all 13 pockets to distribute the force of the low reverse clutch steel elements evenly throughout the case. Some case preparation may be necessary.

Kit #077758 Contents		
Type	Qty	Alto#
Friction	5	077714
Steel	5	077705A173
Case Saver Clips	13	077300*
Snap Ring	1	077254

*These case saver clips can only be used with Alto Steel Plates.



Alto Way • PO Box 1088 • Atmore • AL • 36504
Tel: 251.368.7777 • Fax: 251.368.7774 • www.altoUSA.com

Clutches and Gears for Automatic and Standard Transmissions

0305010

