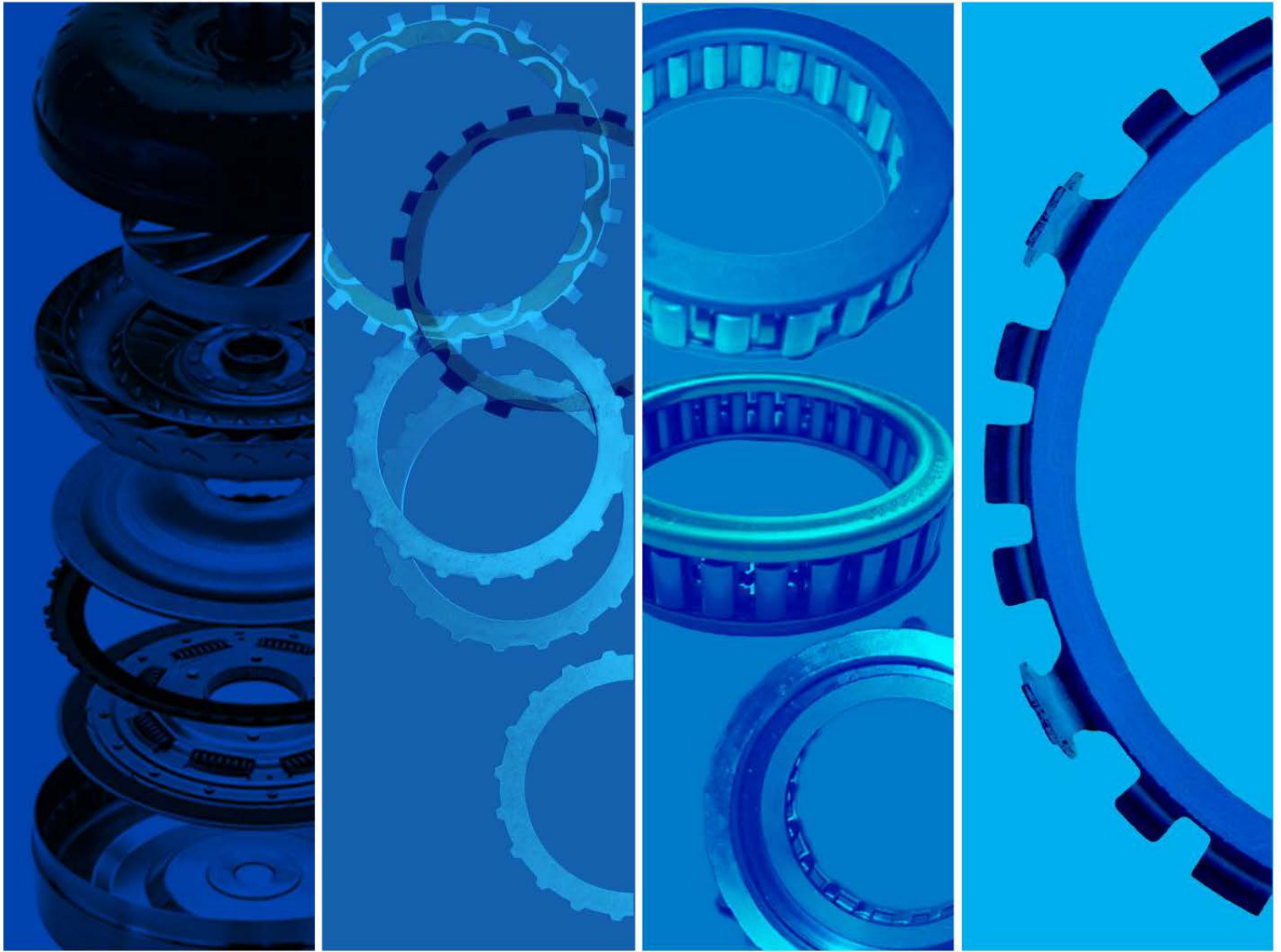




ALTO PRODUCTS CORP.

One Alto Way • Atmore • AL • 36502 • USA • (251) 368-7777 • Fax: (251) 368-7774 • www.altoUSA.com



TORQUE CONVERTER

Torque Converter Rings

GM 245mm, Small Snubber

| ALTO | ID (in) | OD (in) | OAT | * | Material | Ray | BW | Tri | Sonnax | Abco |
|---------|---------|---------|------|---|---------------|-----|-----|------------|---------|------|
| T1534K1 | 1.589 | 2.119 | .045 | * | Green | N/A | N/A | SX-23-SS45 | GM-F-4B | N/A |
| T1534CF | 1.589 | 2.119 | .045 | * | Carbon | N/A | N/A | SX-23-SS45 | GM-F-4B | N/A |
| T1534CM | 1.589 | 2.119 | .045 | * | Carbon Matrix | N/A | N/A | SX-23-SS45 | GM-F-4B | N/A |

GM 298mm, Large Snubber

| ALTO | ID (in) | OD (in) | OAT | * | Material | Ray | BW | Tri | Sonnax | Abco |
|---------|---------|---------|------|---|---------------|-----|-----|------------|--------|------|
| T1544K1 | 2.119 | 2.368 | .045 | * | Green | N/A | N/A | SX-23-LS45 | N/A | N/A |
| T1544CF | 2.119 | 2.368 | .045 | * | Carbon | N/A | N/A | SX-23-LS45 | N/A | N/A |
| T1544CM | 2.119 | 2.368 | .045 | * | Carbon Matrix | N/A | N/A | SX-23-LS45 | N/A | N/A |

Various

| ALTO | ID (in) | OD (in) | OAT | * | Material | Ray | BW | Tri | Sonnax | Abco |
|---------|---------|---------|------|---|---------------|-----|-----|-----|--------|------|
| T1234K1 | 6.294 | 7.177 | .045 | * | Green | N/A | N/A | N/A | N/A | N/A |
| T1234CF | 6.294 | 7.177 | .045 | * | Carbon | N/A | N/A | N/A | N/A | N/A |
| T1234CM | 6.294 | 7.177 | .045 | * | Carbon Matrix | N/A | N/A | N/A | N/A | N/A |
| T1237K1 | 6.294 | 7.177 | .070 | * | Green | N/A | N/A | N/A | N/A | N/A |
| T1237CF | 6.294 | 7.177 | .070 | * | Carbon | N/A | N/A | N/A | N/A | N/A |
| T1237CM | 6.294 | 7.177 | .070 | * | Carbon Matrix | N/A | N/A | N/A | N/A | N/A |

ZF6HP26 Multi-Clutch

| ALTO | ID (in) | OD (in) | OAT | * | Material | Ray | BW | Tri | Sonnax | Abco |
|---------|---------|---------|------|---|---------------|-----|-----|-----|--------|------|
| T2244K1 | 6.300 | 7.300 | .045 | * | Green | N/A | N/A | N/A | N/A | N/A |
| T2244CF | 6.300 | 7.300 | .045 | * | Carbon | N/A | N/A | N/A | N/A | N/A |
| T2244CM | 6.300 | 7.300 | .045 | * | Carbon Matrix | N/A | N/A | N/A | N/A | N/A |
| T2247K1 | 6.300 | 7.300 | .070 | * | Green | N/A | N/A | N/A | N/A | N/A |
| T2247CF | 6.300 | 7.300 | .070 | * | Carbon | N/A | N/A | N/A | N/A | N/A |
| T2247CM | 6.300 | 7.300 | .070 | * | Carbon Matrix | N/A | N/A | N/A | N/A | N/A |

G M Various

| ALTO | ID (in) | OD (in) | OAT | * | Material | Ray | BW | Tri | Sonnax | Abco |
|---------|---------|---------|------|---|---------------|-----|-----|-------------|--------|------|
| T1554K1 | 6.375 | 8.000 | .045 | * | Green | N/A | N/A | SX-23-42 | N/A | N/A |
| T1554CF | 6.375 | 8.000 | .045 | * | Carbon | N/A | N/A | SX-23-42 | N/A | N/A |
| T1554CM | 6.375 | 8.000 | .045 | * | Carbon Matrix | N/A | N/A | SX-23-42 | N/A | N/A |
| T1557K1 | 6.375 | 8.000 | .070 | * | Green | N/A | N/A | SX-23-42X70 | N/A | N/A |
| T1557CF | 6.375 | 8.000 | .070 | * | Carbon | N/A | N/A | SX-23-42X70 | N/A | N/A |
| T1557CM | 6.375 | 8.000 | .070 | * | Carbon Matrix | N/A | N/A | SX-23-42X70 | N/A | N/A |

A4LD Multi Clutch

| ALTO | ID (in) | OD (in) | OAT | * | Material | Ray | BW | Tri | Sonnax | Abco |
|---------|---------|---------|------|---|---------------|---------|--------|-------------|---------|------|
| T1564K1 | 6.438 | 6.813 | .045 | * | Green | R445170 | B45170 | FX-23-17 | FD-F-11 | N/A |
| T1564CF | 6.438 | 6.813 | .045 | * | Carbon | R445170 | B45170 | FX-23-17 | FD-F-11 | N/A |
| T1564CM | 6.438 | 6.813 | .045 | * | Carbon Matrix | R445170 | B45170 | FX-23-17 | FD-F-11 | N/A |
| T1567K1 | 6.438 | 6.813 | .070 | * | Green | R475170 | B66170 | FX-23-17X70 | N/A | N/A |
| T1567CF | 6.438 | 6.813 | .070 | * | Carbon | R475170 | B66170 | FX-23-17X70 | N/A | N/A |
| T1567CM | 6.438 | 6.813 | .070 | * | Carbon Matrix | R475170 | B66170 | FX-23-17X70 | N/A | N/A |

DPO

| ALTO | ID (in) | OD (in) | OAT | * | Material | Ray | BW | Tri | Sonnax | Abco |
|---------|---------|---------|------|---|---------------|---------|--------|------------|--------|------|
| T1574K1 | 6.685 | 7.500 | .045 | * | Green | R445420 | B45420 | RX-23-1 | RE-F-1 | N/A |
| T1574CF | 6.685 | 7.500 | .045 | * | Carbon | R445420 | B45420 | RX-23-1 | RE-F-1 | N/A |
| T1574CM | 6.685 | 7.500 | .045 | * | Carbon Matrix | R445420 | B45420 | RX-23-1 | RE-F-1 | N/A |
| T1577K1 | 6.685 | 7.500 | .070 | * | Green | R475420 | N/A | RX-23-1X70 | N/A | N/A |
| T1577CF | 6.685 | 7.500 | .070 | * | Carbon | R475420 | N/A | RX-23-1X70 | N/A | N/A |
| T1577CM | 6.685 | 7.500 | .070 | * | Carbon Matrix | R475420 | N/A | RX-23-1X70 | N/A | N/A |

Torque Converter Rings

DPO, AL4

| ALTO | ID (in) | OD (in) | OAT | * | Material | Ray | BW | Tri | Sonnax | Abco |
|---------|---------|---------|------|---|---------------|---------|--------|-----|--------|------|
| T1584K1 | 7.100 | 7.930 | .045 | * | Green | R445620 | B45620 | N/A | N/A | N/A |
| T1584CF | 7.100 | 7.930 | .045 | * | Carbon | R445620 | B45620 | N/A | N/A | N/A |
| T1584CM | 7.100 | 7.930 | .045 | * | Carbon Matrix | R445620 | B45620 | N/A | N/A | N/A |

L3N71B, A131

| ALTO | ID (in) | OD (in) | OAT | * | Material | Ray | BW | Tri | Sonnax | Abco |
|---------|---------|---------|------|---|---------------|---------|--------|-----------|--------|------|
| T1594K1 | 7.125 | 8.250 | .045 | * | Green | R445160 | B45160 | YX23-2 | N/A | N/A |
| T1594CF | 7.125 | 8.250 | .045 | * | Carbon | R445160 | B45160 | YX23-2 | N/A | N/A |
| T1594CM | 7.125 | 8.250 | .045 | * | Carbon Matrix | R445160 | B45160 | YX23-2 | N/A | N/A |
| T1597K1 | 7.125 | 8.250 | .070 | * | Green | R475160 | B66160 | YX23-2X70 | N/A | N/A |
| T1597CF | 7.125 | 8.250 | .070 | * | Carbon | R475160 | B66160 | YX23-2X70 | N/A | N/A |
| T1597CM | 7.125 | 8.250 | .070 | * | Carbon Matrix | R475160 | B66160 | YX23-2X70 | N/A | N/A |

Various

| ALTO | ID (in) | OD (in) | OAT | * | Material | Ray | BW | Tri | Sonnax | Abco |
|---------|---------|---------|------|---|---------------|-----|-----|-----|--------|------|
| T2234K1 | 7.125 | 9.875 | .045 | * | Green | N/A | N/A | N/A | N/A | N/A |
| T2234CF | 7.125 | 9.875 | .045 | * | Carbon | N/A | N/A | N/A | N/A | N/A |
| T2234CM | 7.125 | 9.875 | .045 | * | Carbon Matrix | N/A | N/A | N/A | N/A | N/A |
| T2237K1 | 7.125 | 9.875 | .070 | * | Green | N/A | N/A | N/A | N/A | N/A |
| T2237CF | 7.125 | 9.875 | .070 | * | Carbon | N/A | N/A | N/A | N/A | N/A |
| T2237CM | 7.125 | 9.875 | .070 | * | Carbon Matrix | N/A | N/A | N/A | N/A | N/A |

Various

| ALTO | ID (in) | OD (in) | OAT | * | Material | Ray | BW | Tri | Sonnax | Abco |
|---------|---------|---------|------|---|---------------|-----|-----|-----|--------|------|
| T2294K1 | 7.150 | 10.100 | .045 | * | Green | N/A | N/A | N/A | N/A | N/A |
| T2294CF | 7.150 | 10.100 | .045 | * | Carbon | N/A | N/A | N/A | N/A | N/A |
| T2294CM | 7.150 | 10.100 | .045 | * | Carbon Matrix | N/A | N/A | N/A | N/A | N/A |
| T2297K1 | 7.150 | 10.100 | .070 | * | Green | N/A | N/A | N/A | N/A | N/A |
| T2297CF | 7.150 | 10.100 | .070 | * | Carbon | N/A | N/A | N/A | N/A | N/A |
| T2297CM | 7.150 | 10.100 | .070 | * | Carbon Matrix | N/A | N/A | N/A | N/A | N/A |

Various

| ALTO | ID (in) | OD (in) | OAT | * | Material | Ray | BW | Tri | Sonnax | Abco |
|---------|---------|---------|------|---|---------------|-----|-----|-----|--------|------|
| T2304K1 | 7.150 | 10.600 | .045 | * | Green | N/A | N/A | N/A | N/A | N/A |
| T2304CF | 7.150 | 10.600 | .045 | * | Carbon | N/A | N/A | N/A | N/A | N/A |
| T2304CM | 7.150 | 10.600 | .045 | * | Carbon Matrix | N/A | N/A | N/A | N/A | N/A |
| T2307K1 | 7.150 | 10.600 | .070 | * | Green | N/A | N/A | N/A | N/A | N/A |
| T2307CF | 7.150 | 10.600 | .070 | * | Carbon | N/A | N/A | N/A | N/A | N/A |
| T2307CM | 7.150 | 10.600 | .070 | * | Carbon Matrix | N/A | N/A | N/A | N/A | N/A |

Various

| ALTO | ID (in) | OD (in) | OAT | * | Material | Ray | BW | Tri | Sonnax | Abco |
|---------|---------|---------|------|---|---------------|---------|--------|-----|--------|------|
| T1514K1 | 7.250 | 8.500 | .045 | * | Green | R445360 | B45360 | N/A | N/A | N/A |
| T1514CF | 7.250 | 8.500 | .045 | * | Carbon | R445360 | B45360 | N/A | N/A | N/A |
| T1514CM | 7.250 | 8.500 | .045 | * | Carbon Matrix | R445360 | B45360 | N/A | N/A | N/A |
| T1517K1 | 7.250 | 8.500 | .070 | * | Green | R475360 | B66360 | N/A | N/A | N/A |
| T1517CF | 7.250 | 8.500 | .070 | * | Carbon | R475360 | B66360 | N/A | N/A | N/A |
| T1517CM | 7.250 | 8.500 | .070 | * | Carbon Matrix | R475360 | B66360 | N/A | N/A | N/A |

Torque Converter Rings

AW81-40, U440E

| ALTO | ID (in) | OD (in) | OAT | * | Material | Ray | BW | Tri | Sonnax | Abco |
|---------|---------|---------|------|---|---------------|---------|--------|-----|--------|------|
| T1244K1 | 7.280 | 8.070 | .045 | | Green | R445640 | B45640 | N/A | N/A | N/A |
| T1244CF | 7.280 | 8.070 | .045 | | Carbon | R445640 | B45640 | N/A | N/A | N/A |
| T1244CM | 7.280 | 8.070 | .045 | | Carbon Matrix | R445640 | B45640 | N/A | N/A | N/A |
| T1247K1 | 7.280 | 8.070 | .070 | | Green | R475640 | N/A | N/A | N/A | N/A |
| T1247CF | 7.280 | 8.070 | .070 | | Carbon | R475640 | N/A | N/A | N/A | N/A |
| T1247CM | 7.280 | 8.070 | .070 | | Carbon Matrix | R475640 | N/A | N/A | N/A | N/A |

5R55N W/ Modulated Groove

| ALTO | ID (in) | OD (in) | OAT | * | Material | Ray | BW | Tri | Sonnax | Abco |
|----------|---------|---------|------|---|---------------|-----|-----|--------------|--------|------|
| T1604K1G | 7.281 | 8.250 | .045 | * | Green | N/A | N/A | FX-23-47 | N/A | N/A |
| T1604CFG | 7.281 | 8.250 | .045 | * | Carbon | N/A | N/A | FX-23-47 | N/A | N/A |
| T1604CMG | 7.281 | 8.250 | .045 | * | Carbon Matrix | N/A | N/A | FX-23-47 | N/A | N/A |
| T1607K1G | 7.281 | 8.250 | .070 | * | Green | N/A | N/A | FX-23-47MX70 | N/A | N/A |
| T1607CFG | 7.281 | 8.250 | .070 | * | Carbon | N/A | N/A | FX-23-47MX70 | N/A | N/A |
| T1607CMG | 7.281 | 8.250 | .070 | * | Carbon Matrix | N/A | N/A | FX-23-47MX70 | N/A | N/A |

L3N71B

| ALTO | ID (in) | OD (in) | OAT | * | Material | Ray | BW | Tri | Sonnax | Abco |
|---------|---------|---------|------|---|---------------|-----|-----|------------|--------|------|
| T1614K1 | 7.500 | 8.375 | .045 | * | Green | N/A | N/A | JX-23-1 | N/A | 66A |
| T1614CF | 7.500 | 8.375 | .045 | * | Carbon | N/A | N/A | JX-23-1 | N/A | 66A |
| T1614CM | 7.500 | 8.375 | .045 | * | Carbon Matrix | N/A | N/A | JX-23-1 | N/A | 66A |
| T1617K1 | 7.500 | 8.375 | .070 | * | Green | N/A | N/A | JX-23-1X70 | N/A | 66C |
| T1617CF | 7.500 | 8.375 | .070 | * | Carbon | N/A | N/A | JX-23-1X70 | N/A | 66C |
| T1617CM | 7.500 | 8.375 | .070 | * | Carbon Matrix | N/A | N/A | JX-23-1X70 | N/A | 66C |

4F50N, 5R55

| ALTO | ID (in) | OD (in) | OAT | * | Material | Ray | BW | Tri | Sonnax | Abco |
|---------|---------|---------|------|---|---------------|---------|--------|-----|--------|------|
| T1484K1 | 7.500 | 9.000 | .045 | | Green | R445570 | N/A | N/A | N/A | N/A |
| T1484CF | 7.500 | 9.000 | .045 | | Carbon | R445570 | N/A | N/A | N/A | N/A |
| T1484CM | 7.500 | 9.000 | .045 | | Carbon Matrix | R445570 | N/A | N/A | N/A | N/A |
| T1487K1 | 7.500 | 9.000 | .070 | | Green | R475570 | B66570 | N/A | N/A | N/A |
| T1487CF | 7.500 | 9.000 | .070 | | Carbon | R475570 | B66570 | N/A | N/A | N/A |
| T1487CM | 7.500 | 9.000 | .070 | | Carbon Matrix | R475570 | B66570 | N/A | N/A | N/A |

GM 245mm HP

| ALTO | ID (in) | OD (in) | OAT | * | Material | Ray | BW | Tri | Sonnax | Abco |
|---------|---------|---------|------|---|---------------|-----|-----|------------|-----------|------|
| T1624CM | 7.500 | 9.188 | .045 | * | Carbon Matrix | N/A | N/A | SX-23-48HC | GM-F-17HC | N/A |

Various

| ALTO | ID (in) | OD (in) | OAT | * | Material | Ray | BW | Tri | Sonnax | Abco |
|---------|---------|---------|------|---|---------------|---------|--------|-----|--------|------|
| T1634K1 | 7.500 | 10.100 | .045 | * | Green | R445670 | B45670 | N/A | N/A | N/A |
| T1634CF | 7.500 | 10.100 | .045 | * | Carbon | R445670 | B45670 | N/A | N/A | N/A |
| T1634CM | 7.500 | 10.100 | .045 | * | Carbon Matrix | R445670 | B45670 | N/A | N/A | N/A |

Various

| ALTO | ID (in) | OD (in) | OAT | * | Material | Ray | BW | Tri | Sonnax | Abco |
|---------|---------|---------|------|---|---------------|-----|-----|-------------|--------|------|
| T1254K1 | 7.500 | 10.125 | .045 | * | Green | N/A | N/A | JX-23-24 | N/A | N/A |
| T1254CF | 7.500 | 10.125 | .045 | * | Carbon | N/A | N/A | JX-23-24 | N/A | N/A |
| T1254CM | 7.500 | 10.125 | .045 | * | Carbon Matrix | N/A | N/A | JX-23-24 | N/A | N/A |
| T1257K1 | 7.500 | 10.125 | .070 | * | Green | N/A | N/A | JX-23-24X70 | N/A | N/A |
| T1257CF | 7.500 | 10.125 | .070 | * | Carbon | N/A | N/A | JX-23-24X70 | N/A | N/A |
| T1257CM | 7.500 | 10.125 | .070 | * | Carbon Matrix | N/A | N/A | JX-23-24X70 | N/A | N/A |

Torque Converter Rings

Various (fx)

| ALTO | ID (in) | OD (in) | OAT | * | Material | Ray | BW | Tri | Sonnax | Abco |
|---------|---------|---------|------|---|---------------|-----|-----|-----|--------|------|
| T2274K1 | 7.500 | 10.500 | .045 | * | Green | N/A | N/A | N/A | N/A | N/A |
| T2274CF | 7.500 | 10.500 | .045 | * | Carbon | N/A | N/A | N/A | N/A | N/A |
| T2274CM | 7.500 | 10.500 | .045 | * | Carbon Matrix | N/A | N/A | N/A | N/A | N/A |

Various

| ALTO | ID (in) | OD (in) | OAT | * | Material | Ray | BW | Tri | Sonnax | Abco |
|---------|---------|---------|------|---|---------------|---------|--------|-----|--------|------|
| T2254K1 | 7.591 | 8.850 | .045 | * | Green | R445650 | B45650 | N/A | N/A | N/A |
| T2254CF | 7.591 | 8.850 | .045 | * | Carbon | R445650 | B45650 | N/A | N/A | N/A |
| T2254CM | 7.591 | 8.850 | .045 | * | Carbon Matrix | R445650 | B45650 | N/A | N/A | N/A |

Saturn Vue CVT

| ALTO | ID (in) | OD (in) | OAT | * | Material | Ray | BW | Tri | Sonnax | Abco |
|---------|---------|---------|------|---|---------------|-----|-----|-----|--------|------|
| T2264K1 | 7.600 | 8.675 | .045 | * | Green | N/A | N/A | N/A | N/A | N/A |
| T2264CF | 7.600 | 8.675 | .045 | * | Carbon | N/A | N/A | N/A | N/A | N/A |
| T2264CM | 7.600 | 8.675 | .045 | * | Carbon Matrix | N/A | N/A | N/A | N/A | N/A |
| T2267K1 | 7.600 | 8.675 | .070 | * | Green | N/A | N/A | N/A | N/A | N/A |
| T2267CF | 7.600 | 8.675 | .070 | * | Carbon | N/A | N/A | N/A | N/A | N/A |
| T2267CM | 7.600 | 8.675 | .070 | * | Carbon Matrix | N/A | N/A | N/A | N/A | N/A |

Nissan Micra

| ALTO | ID (in) | OD (in) | OAT | * | Material | Ray | BW | Tri | Sonnax | Abco |
|---------|---------|---------|------|---|---------------|-----|-----|-------------|--------|------|
| T1644K1 | 7.625 | 8.250 | .045 | | Green | N/A | N/A | JX-23-24 | N/A | N/A |
| T1644CF | 7.625 | 8.250 | .045 | | Carbon | N/A | N/A | JX-23-24 | N/A | N/A |
| T1644CM | 7.625 | 8.250 | .045 | | Carbon Matrix | N/A | N/A | JX-23-24 | N/A | N/A |
| T1647K1 | 7.625 | 8.250 | .070 | | Green | N/A | N/A | JX-23-24X70 | N/A | N/A |
| T1647CF | 7.625 | 8.250 | .070 | | Carbon | N/A | N/A | JX-23-24X70 | N/A | N/A |
| T1647CM | 7.625 | 8.250 | .070 | | Carbon Matrix | N/A | N/A | JX-23-24X70 | N/A | N/A |

Various

| ALTO | ID (in) | OD (in) | OAT | * | Material | Ray | BW | Tri | Sonnax | Abco |
|---------|---------|---------|------|---|---------------|---------|--------|-----|--------|------|
| T1654K1 | 7.625 | 9.125 | .045 | * | Green | R445220 | B45220 | N/A | N/A | N/A |
| T1654CF | 7.625 | 9.125 | .045 | * | Carbon | R445220 | B45220 | N/A | N/A | N/A |
| T1654CM | 7.625 | 9.125 | .045 | * | Carbon Matrix | R445220 | B45220 | N/A | N/A | N/A |
| T1657K1 | 7.625 | 9.125 | .070 | * | Green | R475220 | B66220 | N/A | N/A | N/A |
| T1657CF | 7.625 | 9.125 | .070 | * | Carbon | R475220 | B66220 | N/A | N/A | N/A |
| T1657CM | 7.625 | 9.125 | .070 | * | Carbon Matrix | R475220 | B66220 | N/A | N/A | N/A |

Chry 9-1/2

| ALTO | ID (in) | OD (in) | OAT | * | Material | Ray | BW | Tri | Sonnax | Abco |
|---------|---------|---------|------|---|---------------|---------|--------|-------------|---------|------|
| T1394K1 | 7.625 | 9.625 | .045 | | Green | R445210 | B45210 | TX-23-18 | CH-F-10 | N/A |
| T1394CF | 7.625 | 9.625 | .045 | | Carbon | R445210 | B45210 | TX-23-18 | CH-F-10 | N/A |
| T1394CM | 7.625 | 9.625 | .045 | | Carbon Matrix | R445210 | B45210 | TX-23-18 | CH-F-10 | N/A |
| T1397K1 | 7.625 | 9.625 | .070 | | Green | R475210 | B66210 | TX-23-18X70 | CH-F-11 | 75-P |
| T1397CF | 7.625 | 9.625 | .070 | | Carbon | R475210 | B66210 | TX-23-18X70 | CH-F-11 | 75-P |
| T1397CM | 7.625 | 9.625 | .070 | | Carbon Matrix | R475210 | B66210 | TX-23-18X70 | CH-F-11 | 75-P |

Chry 9-1/2

| ALTO | ID (in) | OD (in) | OAT | * | Material | Ray | BW | Tri | Sonnax | Abco |
|---------|---------|---------|------|---|---------------|---------|--------|-------------|---------|------|
| T1454K1 | 7.745 | 9.125 | .045 | | Green | R445220 | B45220 | TX-23-15 | N/A | N/A |
| T1454CF | 7.745 | 9.125 | .045 | | Carbon | R445220 | B45220 | TX-23-15 | N/A | N/A |
| T1454CM | 7.745 | 9.125 | .045 | | Carbon Matrix | R445220 | B45220 | TX-23-15 | N/A | N/A |
| T1457K1 | 7.745 | 9.125 | .070 | | Green | R475220 | B66220 | TX-23-15X70 | CH-F-18 | N/A |
| T1457CF | 7.745 | 9.125 | .070 | | Carbon | R475220 | B66220 | TX-23-15X70 | CH-F-18 | N/A |
| T1457CM | 7.745 | 9.125 | .070 | | Carbon Matrix | R475220 | B66220 | TX-23-15X70 | CH-F-18 | N/A |

Torque Converter Rings

AS/F4

| ALTO | ID (in) | OD (in) | OAT | * | Material | Ray | BW | Tri | Sonnax | Abco |
|---------|---------|---------|------|---|---------------|---------|--------|------------|--------|------|
| T1464K1 | 7.750 | 8.750 | .045 | | Green | R445150 | B45150 | NX-23-1 | HO-F-1 | 69 |
| T1464CF | 7.750 | 8.750 | .045 | | Carbon | R445150 | B45150 | NX-23-1 | HO-F-1 | 69 |
| T1464CM | 7.750 | 8.750 | .045 | | Carbon Matrix | R445150 | B45150 | NX-23-1 | HO-F-1 | 69 |
| T1467K1 | 7.750 | 8.750 | .070 | | Green | R475150 | B66150 | NX-23-1X70 | HO-F-2 | 69A |
| T1467CF | 7.750 | 8.750 | .070 | | Carbon | R475150 | B66150 | NX-23-1X70 | HO-F-2 | 69A |
| T1467CM | 7.750 | 8.750 | .070 | | Carbon Matrix | R475150 | B66150 | NX-23-1X70 | HO-F-2 | 69A |

GM 245mm, HP 10" Kit: AODE/4R70W GM 298/300mm, 4L80E

| ALTO | ID (in) | OD (in) | OAT | * | Material | Ray | BW | Tri | Sonnax | Abco |
|---------|---------|---------|------|---|---------------|---------|--------|-------------|--------|------|
| T1444K1 | 7.750 | 9.000 | .045 | | Green | R445320 | B45320 | SX-23-13 | CH-F-5 | 56B |
| T1444CF | 7.750 | 9.000 | .045 | | Carbon | R445320 | B45320 | SX-23-13 | CH-F-5 | 56B |
| T1444CM | 7.750 | 9.000 | .045 | | Carbon Matrix | R445320 | B45320 | SX-23-13 | CH-F-5 | 56B |
| T1447K1 | 7.750 | 9.000 | .070 | | Green | R475320 | B66320 | SX-23-13X70 | CH-F-8 | 56D |
| T1447CF | 7.750 | 9.000 | .070 | | Carbon | R475320 | B66320 | SX-23-13X70 | CH-F-8 | 56D |
| T1447CM | 7.750 | 9.000 | .070 | | Carbon Matrix | R475320 | B66320 | SX-23-13X70 | CH-F-8 | 56D |

Various

| ALTO | ID (in) | OD (in) | OAT | * | Material | Ray | BW | Tri | Sonnax | Abco |
|---------|---------|---------|------|---|---------------|-----|-----|-------------|---------|------|
| T1024K1 | 7.750 | 9.125 | .045 | | Green | N/A | N/A | TX-23-15 | N/A | N/A |
| T1024CF | 7.750 | 9.125 | .045 | | Carbon | N/A | N/A | TX-23-15 | N/A | N/A |
| T1024CM | 7.750 | 9.125 | .045 | | Carbon Matrix | N/A | N/A | TX-23-15 | N/A | N/A |
| T1027K1 | 7.750 | 9.125 | .070 | | Green | N/A | N/A | TX-23-15X70 | CH-F-18 | N/A |
| T1027CF | 7.750 | 9.125 | .070 | | Carbon | N/A | N/A | TX-23-15X70 | CH-F-18 | N/A |
| T1027CM | 7.750 | 9.125 | .070 | | Carbon Matrix | N/A | N/A | TX-23-15X70 | CH-F-18 | N/A |

Chrysler Various

| ALTO | ID (in) | OD (in) | OAT | * | Material | Ray | BW | Tri | Sonnax | Abco |
|---------|---------|---------|------|---|---------------|-----|-----|-------------|--------|------|
| T1664K1 | 7.750 | 9.375 | .045 | * | Green | N/A | N/A | TX-23-12 | N/A | N/A |
| T1664CF | 7.750 | 9.375 | .045 | * | Carbon | N/A | N/A | TX-23-12 | N/A | N/A |
| T1664CM | 7.750 | 9.375 | .045 | * | Carbon Matrix | N/A | N/A | TX-23-12 | N/A | N/A |
| T1667K1 | 7.750 | 9.375 | .070 | * | Green | N/A | N/A | TX-23-12X70 | N/A | N/A |
| T1667CF | 7.750 | 9.375 | .070 | * | Carbon | N/A | N/A | TX-23-12X70 | N/A | N/A |
| T1667CM | 7.750 | 9.375 | .070 | * | Carbon Matrix | N/A | N/A | TX-23-12X70 | N/A | N/A |

Chrysler 10 LU

| ALTO | ID (in) | OD (in) | OAT | * | Material | Ray | BW | Tri | Sonnax | Abco |
|---------|---------|---------|------|---|---------------|-----|-----|-------------|---------|------|
| T1674K1 | 7.813 | 9.125 | .045 | * | Green | N/A | N/A | TX-23-16 | CH-F-16 | N/A |
| T1674CF | 7.813 | 9.125 | .045 | * | Carbon | N/A | N/A | TX-23-16 | CH-F-16 | N/A |
| T1674CM | 7.813 | 9.125 | .045 | * | Carbon Matrix | N/A | N/A | TX-23-16 | CH-F-16 | N/A |
| T1677K1 | 7.813 | 9.125 | .070 | * | Green | N/A | N/A | TX-23-16X70 | CH-F-17 | N/A |
| T1677CF | 7.813 | 9.125 | .070 | * | Carbon | N/A | N/A | TX-23-16X70 | CH-F-17 | N/A |
| T1677CM | 7.813 | 9.125 | .070 | * | Carbon Matrix | N/A | N/A | TX-23-16X70 | CH-F-17 | N/A |

AX4S, AX4N W/ Modulated Groove

| ALTO | ID (in) | OD (in) | OAT | * | Material | Ray | BW | Tri | Sonnax | Abco |
|----------|---------|---------|------|---|---------------|-----|-----|--------------|---------|------|
| T1684K1G | 7.875 | 9.000 | .045 | * | Green | N/A | N/A | FX-23-29M | FD-F-15 | N/A |
| T1684CFG | 7.875 | 9.000 | .045 | * | Carbon | N/A | N/A | FX-23-29M | FD-F-15 | N/A |
| T1684CMG | 7.875 | 9.000 | .045 | * | Carbon Matrix | N/A | N/A | FX-23-29M | FD-F-15 | N/A |
| T1687K1G | 7.875 | 9.000 | .070 | * | Green | N/A | N/A | FX-23-29MX70 | N/A | 75G |
| T1687CFG | 7.875 | 9.000 | .070 | * | Carbon | N/A | N/A | FX-23-29MX70 | N/A | 75G |
| T1687CMG | 7.875 | 9.000 | .070 | * | Carbon Matrix | N/A | N/A | FX-23-29MX70 | N/A | 75G |

Torque Converter Rings

AX4S, AX4N WO/ Modulated Groove

| ALTO | ID (in) | OD (in) | OAT | * | Material | Ray | BW | Tri | Sonnax | Abco |
|---------|---------|---------|------|---|---------------|-----|-----|--------------|---------|------|
| T1684K1 | 7.875 | 9.000 | .045 | * | Green | N/A | N/A | FX-23-29M | FD-F-15 | N/A |
| T1684CF | 7.875 | 9.000 | .045 | * | Carbon | N/A | N/A | FX-23-29M | FD-F-15 | N/A |
| T1684CM | 7.875 | 9.000 | .045 | * | Carbon Matrix | N/A | N/A | FX-23-29M | FD-F-15 | N/A |
| T1687K1 | 7.875 | 9.000 | .070 | * | Green | N/A | N/A | FX-23-29MX70 | N/A | 75G |
| T1687CF | 7.875 | 9.000 | .070 | * | Carbon | N/A | N/A | FX-23-29MX70 | N/A | 75G |
| T1687CM | 7.875 | 9.000 | .070 | * | Carbon Matrix | N/A | N/A | FX-23-29MX70 | N/A | 75G |

6HP19

| ALTO | ID (in) | OD (in) | OAT | * | Material | Ray | BW | Tri | Sonnax | Abco |
|---------|---------|---------|------|---|---------------|---------|--------|-----|--------|------|
| T1694K1 | 7.875 | 9.134 | .045 | * | Green | R445740 | B45740 | N/A | N/A | N/A |
| T1694CF | 7.875 | 9.134 | .045 | * | Carbon | R445740 | B45740 | N/A | N/A | N/A |
| T1694CM | 7.875 | 9.134 | .045 | * | Carbon Matrix | R445740 | B45740 | N/A | N/A | N/A |

CD4E Small Cover Modulated Groove

| ALTO | ID (in) | OD (in) | OAT | * | Material | Ray | BW | Tri | Sonnax | Abco |
|----------|---------|---------|------|---|---------------|-----|-----|-----|--------|------|
| T1157K1G | 7.875 | 9.188 | .070 | * | Green | N/A | N/A | N/A | N/A | N/A |
| T1157CFG | 7.875 | 9.188 | .070 | * | Carbon | N/A | N/A | N/A | N/A | N/A |
| T1157CMG | 7.875 | 9.188 | .070 | * | Carbon Matrix | N/A | N/A | N/A | N/A | N/A |

Chrysler 9 1/2 LU, Nissan Sentra, G4A, 4EAT

| ALTO | ID (in) | OD (in) | OAT | * | Material | Ray | BW | Tri | Sonnax | Abco |
|---------|---------|---------|------|---|---------------|-----|-----|------------|--------|------|
| T1704K1 | 7.875 | 9.250 | .045 | * | Green | N/A | N/A | JX-23-8 | CH-F-5 | N/A |
| T1704CF | 7.875 | 9.250 | .045 | * | Carbon | N/A | N/A | JX-23-8 | CH-F-5 | N/A |
| T1704CM | 7.875 | 9.250 | .045 | * | Carbon Matrix | N/A | N/A | JX-23-8 | CH-F-5 | N/A |
| T1707K1 | 7.875 | 9.250 | .070 | * | Green | N/A | N/A | JX-23-8X70 | CH-F-8 | N/A |
| T1707CF | 7.875 | 9.250 | .070 | * | Carbon | N/A | N/A | JX-23-8X70 | CH-F-8 | N/A |
| T1707CM | 7.875 | 9.250 | .070 | * | Carbon Matrix | N/A | N/A | JX-23-8X70 | CH-F-8 | N/A |

TF60SN, A540E, 09G, TO-42

| ALTO | ID (in) | OD (in) | OAT | * | Material | Ray | BW | Tri | Sonnax | Abco |
|---------|---------|---------|------|---|---------------|---------|---------|-------------|--------|------|
| T1714K1 | 7.875 | 9.312 | .045 | * | Green | R445520 | B45520 | YX-23-12 | N/A | N/A |
| T1714CF | 7.875 | 9.312 | .045 | * | Carbon | R445520 | B45520 | YX-23-12 | N/A | N/A |
| T1714CM | 7.875 | 9.312 | .045 | * | Carbon Matrix | R445520 | B455202 | YX-23-12 | N/A | N/A |
| T1717K1 | 7.875 | 9.312 | .070 | * | Green | R475520 | B66520 | YX-23-12X70 | N/A | N/A |
| T1717CF | 7.875 | 9.312 | .070 | * | Carbon | R475520 | B66520 | YX-23-12X70 | N/A | N/A |
| T1717CM | 7.875 | 9.312 | .070 | * | Carbon Matrix | R475520 | B66520 | YX-23-12X70 | N/A | N/A |

Chrysler A604, A670

| ALTO | ID (in) | OD (in) | OAT | * | Material | Ray | BW | Tri | Sonnax | Abco |
|---------|---------|---------|------|---|---------------|-----|-----|-----|--------|------|
| T1047K1 | 7.875 | 9.625 | .070 | * | Green | N/A | N/A | N/A | N/A | N/A |
| T1047CF | 7.875 | 9.625 | .070 | * | Carbon | N/A | N/A | N/A | N/A | N/A |
| T1047CM | 7.875 | 9.625 | .070 | * | Carbon Matrix | N/A | N/A | N/A | N/A | N/A |

Various

| ALTO | ID (in) | OD (in) | OAT | * | Material | Ray | BW | Tri | Sonnax | Abco |
|---------|---------|---------|------|---|---------------|---------|--------|-----|--------|------|
| T1364K1 | 7.921 | 9.921 | .045 | * | Green | R445205 | B45205 | N/A | N/A | N/A |
| T1364CF | 7.921 | 9.921 | .045 | * | Carbon | R445205 | B45205 | N/A | N/A | N/A |
| T1364CM | 7.921 | 9.921 | .045 | * | Carbon Matrix | R445205 | B45205 | N/A | N/A | N/A |
| T1367K1 | 7.921 | 9.921 | .070 | * | Green | R475205 | B66205 | N/A | N/A | N/A |
| T1367CF | 7.921 | 9.921 | .070 | * | Carbon | R475205 | B66205 | N/A | N/A | N/A |
| T1367CM | 7.921 | 9.921 | .070 | * | Carbon Matrix | R475205 | B66205 | N/A | N/A | N/A |

Torque Converter Rings

Chry 10 LU

| ALTO | ID (in) | OD (in) | OAT | * | Material | Ray | BW | Tri | Sonnax | Abco |
|---------|---------|---------|------|---|---------------|---------|--------|-----|--------|------|
| T1724K1 | 7.945 | 9.125 | .045 | * | Green | R445225 | B45225 | N/A | N/A | N/A |
| T1724CF | 7.945 | 9.125 | .045 | * | Carbon | R445225 | B45225 | N/A | N/A | N/A |
| T1724CM | 7.945 | 9.125 | .045 | * | Carbon Matrix | R445225 | B45225 | N/A | N/A | N/A |
| T1727K1 | 7.945 | 9.125 | .070 | * | Green | R475225 | B66225 | N/A | N/A | N/A |
| T1727CF | 7.945 | 9.125 | .070 | * | Carbon | R475225 | B66225 | N/A | N/A | N/A |
| T1727CM | 7.945 | 9.125 | .070 | * | Carbon Matrix | R475225 | B66225 | N/A | N/A | N/A |

Chry 9-1/2

| ALTO | ID (in) | OD (in) | OAT | * | Material | Ray | BW | Tri | Sonnax | Abco |
|---------|---------|---------|------|---|---------------|---------|-----|-----|--------|------|
| T1407K1 | 7.970 | 9.640 | .070 | | Green | R455000 | N/A | N/A | N/A | N/A |
| T1407CF | 7.970 | 9.640 | .070 | | Carbon | R455000 | N/A | N/A | N/A | N/A |
| T1407CM | 7.970 | 9.640 | .070 | | Carbon Matrix | R455000 | N/A | N/A | N/A | N/A |

TAAT, L4N71B, R4A-EL

| ALTO | ID (in) | OD (in) | OAT | * | Material | Ray | BW | Tri | Sonnax | Abco |
|---------|---------|---------|------|---|---------------|---------|--------|-------------|--------|------|
| T1734K1 | 8.000 | 8.875 | .045 | * | Green | R445130 | B45130 | SX-23-31 | JA-F-2 | N/A |
| T1734CF | 8.000 | 8.875 | .045 | * | Carbon | R445130 | B45130 | SX-23-31 | JA-F-2 | N/A |
| T1734CM | 8.000 | 8.875 | .045 | * | Carbon Matrix | R445130 | B45130 | SX-23-31 | JA-F-2 | N/A |
| T1737K1 | 8.000 | 8.875 | .070 | * | Green | R475130 | B66130 | SX-23-31X70 | JA-F-4 | N/A |
| T1737CF | 8.000 | 8.875 | .070 | * | Carbon | R475130 | B66130 | SX-23-31X70 | JA-F-4 | N/A |
| T1737CM | 8.000 | 8.875 | .070 | * | Carbon Matrix | R475130 | B66130 | SX-23-31X70 | JA-F-4 | N/A |

4EAT-G, KM175, KM176

| ALTO | ID (in) | OD (in) | OAT | * | Material | Ray | BW | Tri | Sonnax | Abco |
|---------|---------|---------|------|---|---------------|---------|--------|------------|--------|------|
| T1204K1 | 8.000 | 9.000 | .045 | | Green | R445390 | B45390 | TX-23-6 | CC-F-1 | 84 |
| T1204CF | 8.000 | 9.000 | .045 | | Carbon | R445390 | B45390 | TX-23-6 | CC-F-1 | 84 |
| T1204CM | 8.000 | 9.000 | .045 | | Carbon Matrix | R445390 | B45390 | TX-23-6 | CC-F-1 | 84 |
| T1207K1 | 8.000 | 9.000 | .070 | | Green | R475390 | B66390 | TX-23-6X70 | CC-F-2 | 70A |
| T1207CF | 8.000 | 9.000 | .070 | | Carbon | R475390 | B66390 | TX-23-6X70 | CC-F-2 | 70A |
| T1207CM | 8.000 | 9.000 | .070 | | Carbon Matrix | R475390 | B66390 | TX-23-6X70 | CC-F-2 | 70A |

Chrysler 9-1/2 LU

| ALTO | ID (in) | OD (in) | OAT | * | Material | Ray | BW | Tri | Sonnax | Abco |
|---------|---------|---------|------|---|---------------|-----|-----|------------|--------|------|
| T1744K1 | 8.000 | 9.625 | .045 | * | Green | N/A | N/A | TX-23-9 | N/A | N/A |
| T1744CF | 8.000 | 9.625 | .045 | * | Carbon | N/A | N/A | TX-23-9 | N/A | N/A |
| T1744CM | 8.000 | 9.625 | .045 | * | Carbon Matrix | N/A | N/A | TX-23-9 | N/A | N/A |
| T1747K1 | 8.000 | 9.625 | .070 | * | Green | N/A | N/A | TX-23-9X70 | N/A | 98-P |
| T1747CF | 8.000 | 9.625 | .070 | * | Carbon | N/A | N/A | TX-23-9X70 | N/A | 98-P |
| T1747CM | 8.000 | 9.625 | .070 | * | Carbon Matrix | N/A | N/A | TX-23-9X70 | N/A | 98-P |

Various

| ALTO | ID (in) | OD (in) | OAT | * | Material | Ray | BW | Tri | Sonnax | Abco |
|---------|---------|---------|------|---|---------------|-----|-----|-----|--------|------|
| T1754K1 | 8.000 | 10.125 | .045 | * | Green | N/A | N/A | N/A | FD-F-1 | N/A |
| T1754CF | 8.000 | 10.125 | .045 | * | Carbon | N/A | N/A | N/A | FD-F-1 | N/A |
| T1754CM | 8.000 | 10.125 | .045 | * | Carbon Matrix | N/A | N/A | N/A | FD-F-1 | N/A |

TAAT

| ALTO | ID (in) | OD (in) | OAT | * | Material | Ray | BW | Tri | Sonnax | Abco |
|---------|---------|---------|------|---|---------------|---------|--------|-----|--------|------|
| T1764K1 | 8.062 | 8.843 | .045 | * | Green | R445140 | B45140 | N/A | N/A | N/A |
| T1764CF | 8.062 | 8.843 | .045 | * | Carbon | R445140 | B45140 | N/A | N/A | N/A |
| T1764CM | 8.062 | 8.843 | .045 | * | Carbon Matrix | R445140 | B45140 | N/A | N/A | N/A |
| T1767K1 | 8.062 | 8.843 | .070 | * | Green | R475140 | B66140 | N/A | N/A | N/A |
| T1767CF | 8.062 | 8.843 | .070 | * | Carbon | R475140 | B66140 | N/A | N/A | N/A |
| T1767CM | 8.062 | 8.843 | .070 | * | Carbon Matrix | R475140 | B66140 | N/A | N/A | N/A |

Torque Converter Rings

AXOD, AXODE 3.8L, CD4E W/ Modulated Groove

| ALTO | ID (in) | OD (in) | OAT | * | Material | Ray | BW | Tri | Sonnax | Abco |
|----------|---------|---------|------|---|---------------|-----|-----|--------------|---------|------|
| T1144K1G | 8.062 | 9.688 | .045 | | Green | N/A | N/A | FX-23-25M | FD-F-13 | N/A |
| T1144CFG | 8.062 | 9.688 | .045 | | Carbon | N/A | N/A | FX-23-25M | FD-F-13 | N/A |
| T1144CMG | 8.062 | 9.688 | .045 | | Carbon Matrix | N/A | N/A | FX-23-25M | FD-F-13 | N/A |
| T1147K1G | 8.062 | 9.688 | .070 | | Green | N/A | N/A | FX-23-25MX70 | N/A | N/A |
| T1147CFG | 8.062 | 9.688 | .070 | | Carbon | N/A | N/A | FX-23-25MX70 | N/A | N/A |
| T1147CMG | 8.062 | 9.688 | .070 | | Carbon Matrix | N/A | N/A | FX-23-25MX70 | N/A | N/A |

CD4E W/ Modulated Groove

| ALTO | ID (in) | OD (in) | OAT | * | Material | Ray | BW | Tri | Sonnax | Abco |
|----------|---------|---------|------|---|---------------|-----|-----|--------------|--------|------|
| T1774K1G | 8.063 | 9.125 | .045 | * | Green | N/A | N/A | FX-23-24M | N/A | N/A |
| T1774CFG | 8.063 | 9.125 | .045 | * | Carbon | N/A | N/A | FX-23-24M | N/A | N/A |
| T1774CMG | 8.063 | 9.125 | .045 | * | Carbon Matrix | N/A | N/A | FX-23-24M | N/A | N/A |
| T1777K1G | 8.063 | 9.125 | .070 | * | Green | N/A | N/A | FX-23-24MX70 | N/A | 75F |
| T1777CFG | 8.063 | 9.125 | .070 | * | Carbon | N/A | N/A | FX-23-24MX70 | N/A | 75F |
| T1777CMG | 8.063 | 9.125 | .070 | * | Carbon Matrix | N/A | N/A | FX-23-24MX70 | N/A | 75F |

Honda Lock-up (HO-14)

| ALTO | ID (in) | OD (in) | OAT | * | Material | Ray | BW | Tri | Sonnax | Abco |
|---------|---------|---------|------|---|---------------|---------|--------|-----------|--------|------|
| T1784K1 | 8.125 | 9.125 | .045 | * | Green | R445540 | B45540 | NX23-6 | N/A | N/A |
| T1784CF | 8.125 | 9.125 | .045 | * | Carbon | R445540 | B45540 | NX23-6 | N/A | N/A |
| T1784CM | 8.125 | 9.125 | .045 | * | Carbon Matrix | R445540 | B45540 | NX23-6 | N/A | N/A |
| T1787K1 | 8.125 | 9.125 | .070 | * | Green | R475540 | N/A | NX23-6X70 | N/A | N/A |
| T1787CF | 8.125 | 9.125 | .070 | * | Carbon | R475540 | N/A | NX23-6X70 | N/A | N/A |
| T1787CM | 8.125 | 9.125 | .070 | * | Carbon Matrix | R475540 | N/A | NX23-6X70 | N/A | N/A |

AX4S, AX4N, AXODE, CD4E, JF403, RL4F03A, 4EAT, 4EAT-F, G4A-HL. KM175-5, KM177

| ALTO | ID (in) | OD (in) | OAT | * | Material | Ray | BW | Tri | Sonnax | Abco |
|---------|---------|---------|------|---|---------------|---------|--------|------------|--------|------|
| T1034K1 | 8.125 | 9.250 | .045 | | Green | R445120 | B45120 | FX-23-6 | FD-F-4 | 70 |
| T1034CF | 8.125 | 9.250 | .045 | | Carbon | R445120 | B45120 | FX-23-6 | FD-F-4 | 70 |
| T1034CM | 8.125 | 9.250 | .045 | | Carbon Matrix | R445120 | B45120 | FX-23-6 | FD-F-4 | 70 |
| T1037K1 | 8.125 | 9.250 | .070 | | Green | R475120 | B66120 | FX-23-6X70 | FD-F-6 | 75B |
| T1037CF | 8.125 | 9.250 | .070 | | Carbon | R475120 | B66120 | FX-23-6X70 | FD-F-6 | 75B |
| T1037CM | 8.125 | 9.250 | .070 | | Carbon Matrix | R475120 | B66120 | FX-23-6X70 | FD-F-6 | 75B |

A4LD Multi Clutch

| ALTO | ID (in) | OD (in) | OAT | * | Material | Ray | BW | Tri | Sonnax | Abco |
|---------|---------|---------|------|---|---------------|---------|--------|-------------|---------|------|
| T1794K1 | 8.125 | 9.375 | .045 | | Green | R445100 | B45100 | FX-23-18 | FD-F-10 | N/A |
| T1794CF | 8.125 | 9.375 | .045 | | Carbon | R445100 | B45100 | FX-23-18 | FD-F-10 | N/A |
| T1794CM | 8.125 | 9.375 | .045 | | Carbon Matrix | R445100 | B45100 | FX-23-18 | FD-F-10 | N/A |
| T1797K1 | 8.125 | 9.375 | .070 | | Green | R475100 | N/A | FX-23-18X70 | N/A | N/A |
| T1797CF | 8.125 | 9.375 | .070 | | Carbon | R475100 | N/A | FX-23-18X70 | N/A | N/A |
| T1797CM | 8.125 | 9.375 | .070 | | Carbon Matrix | R475100 | N/A | FX-23-18X70 | N/A | N/A |

AX4S, AX4N, AXODE, CD4E

| ALTO | ID (in) | OD (in) | OAT | * | Material | Ray | BW | Tri | Sonnax | Abco |
|---------|---------|---------|------|---|---------------|---------|--------|-----|--------|------|
| T1374K1 | 8.125 | 9.750 | .045 | | Green | R445080 | B45080 | N/A | N/A | N/A |
| T1374CF | 8.125 | 9.750 | .045 | | Carbon | R445080 | B45080 | N/A | N/A | N/A |
| T1374CM | 8.125 | 9.750 | .045 | | Carbon Matrix | R445080 | B45080 | N/A | N/A | N/A |
| T1377K1 | 8.125 | 9.750 | .070 | | Green | R475080 | B66080 | N/A | N/A | N/A |
| T1377CF | 8.125 | 9.750 | .070 | | Carbon | R475080 | B66080 | N/A | N/A | N/A |
| T1377CM | 8.125 | 9.750 | .070 | | Carbon Matrix | R475080 | B66080 | N/A | N/A | N/A |

Torque Converter Rings

Chrysler Various

| ALTO | ID (in) | OD (in) | OAT | * | Material | Ray | BW | Tri | Sonnax | Abco |
|---------|---------|---------|------|---|---------------|-----|-----|-------------|--------|------|
| T1804K1 | 8.125 | 10.125 | .045 | | Green | N/A | N/A | TX-23-13 | N/A | N/A |
| T1804CF | 8.125 | 10.125 | .045 | | Carbon | N/A | N/A | TX-23-13 | N/A | N/A |
| T1804CM | 8.125 | 10.125 | .045 | | Carbon Matrix | N/A | N/A | TX-23-13 | N/A | N/A |
| T1807K1 | 8.125 | 10.125 | .070 | | Green | N/A | N/A | TX-23-13X70 | N/A | N/A |
| T1807CF | 8.125 | 10.125 | .070 | | Carbon | N/A | N/A | TX-23-13X70 | N/A | N/A |
| T1807CM | 8.125 | 10.125 | .070 | | Carbon Matrix | N/A | N/A | TX-23-13X70 | N/A | N/A |

5HP19 W/ Groove

| ALTO | ID (in) | OD (in) | OAT | * | Material | Ray | BW | Tri | Sonnax | Abco |
|----------|---------|---------|------|---|---------------|-----|-----|-------------|--------|------|
| T1814K1G | 8.141 | 9.438 | .045 | * | Green | N/A | N/A | PX-23-12 | N/A | N/A |
| T1814CFG | 8.141 | 9.438 | .045 | * | Carbon | N/A | N/A | PX-23-12 | N/A | N/A |
| T1814CMG | 8.141 | 9.438 | .045 | * | Carbon Matrix | N/A | N/A | PX-23-12 | N/A | N/A |
| T1817K1G | 8.141 | 9.438 | .070 | * | Green | N/A | N/A | PX-23-12X70 | N/A | N/A |
| T1817CFG | 8.141 | 9.438 | .070 | * | Carbon | N/A | N/A | PX-23-12X70 | N/A | N/A |
| T1817CMG | 8.141 | 9.438 | .070 | * | Carbon Matrix | N/A | N/A | PX-23-12X70 | N/A | N/A |

Hyundai/Kia 6 spd.

| ALTO | ID (in) | OD (in) | OAT | * | Material | Ray | BW | Tri | Sonnax | Abco |
|---------|---------|---------|------|---|---------------|-----|-----|-----|--------|------|
| T2314K1 | 8.150 | 9.410 | .045 | | Green | N/A | N/A | N/A | N/A | N/A |
| T2314CF | 8.150 | 9.410 | .045 | | Carbon | N/A | N/A | N/A | N/A | N/A |
| T2314CM | 8.150 | 9.410 | .045 | | Carbon Matrix | N/A | N/A | N/A | N/A | N/A |
| T2317K1 | 8.150 | 9.410 | .070 | | Green | N/A | N/A | N/A | N/A | N/A |
| T2317CF | 8.150 | 9.410 | .070 | | Carbon | N/A | N/A | N/A | N/A | N/A |
| T2317CM | 8.150 | 9.410 | .070 | | Carbon Matrix | N/A | N/A | N/A | N/A | N/A |

GM 245mm, L4N71B

| ALTO | ID (in) | OD (in) | OAT | * | Material | Ray | BW | Tri | Sonnax | Abco |
|---------|---------|---------|------|---|---------------|---------|--------|------------|--------|------|
| T1504K1 | 8.250 | 9.000 | .045 | | Green | R445310 | B45310 | JX-23-3 | GM-F-3 | 66 |
| T1504CF | 8.250 | 9.000 | .045 | | Carbon | R445310 | B45310 | JX-23-3 | GM-F-3 | 66 |
| T1504CM | 8.250 | 9.000 | .045 | | Carbon Matrix | R445310 | B45310 | JX-23-3 | GM-F-3 | 66 |
| T1507K1 | 8.250 | 9.000 | .070 | | Green | R475310 | B66310 | JX-23-3X70 | GM-F-6 | 66B |
| T1507CF | 8.250 | 9.000 | .070 | | Carbon | R475310 | B66310 | JX-23-3X70 | GM-F-6 | 66B |
| T1507CM | 8.250 | 9.000 | .070 | | Carbon Matrix | R475310 | B66310 | JX-23-3X70 | GM-F-6 | 66B |

GM 245mm, L4N71B

| ALTO | ID (in) | OD (in) | OAT | * | Material | Ray | BW | Tri | Sonnax | Abco |
|---------|---------|---------|------|---|---------------|-----|-----|-----|--------|------|
| T1014K1 | 8.250 | 9.125 | .045 | | Green | N/A | N/A | N/A | N/A | N/A |
| T1014CF | 8.250 | 9.125 | .045 | | Carbon | N/A | N/A | N/A | N/A | N/A |
| T1014CM | 8.250 | 9.125 | .045 | | Carbon Matrix | N/A | N/A | N/A | N/A | N/A |
| T1017K1 | 8.250 | 9.125 | .070 | | Green | N/A | N/A | N/A | N/A | N/A |
| T1017CF | 8.250 | 9.125 | .070 | | Carbon | N/A | N/A | N/A | N/A | N/A |
| T1017CM | 8.250 | 9.125 | .070 | | Carbon Matrix | N/A | N/A | N/A | N/A | N/A |

GM 258mm, 4HP22, 5HP19, CD4E

| ALTO | ID (in) | OD (in) | OAT | * | Material | Ray | BW | Tri | Sonnax | Abco |
|---------|---------|---------|------|---|---------------|---------|--------|------------|--------|------|
| T1524K1 | 8.250 | 9.500 | .045 | | Green | R445300 | B45300 | PX-23-9 | FS-F-1 | 68 |
| T1524CF | 8.250 | 9.500 | .045 | | Carbon | R445300 | B45300 | PX-23-9 | FS-F-1 | 68 |
| T1524CM | 8.250 | 9.500 | .045 | | Carbon Matrix | R445300 | B45300 | PX-23-9 | FS-F-1 | 68 |
| T1527K1 | 8.250 | 9.500 | .070 | | Green | R475300 | B66300 | PX-23-9X70 | FS-F-2 | 68C |
| T1527CF | 8.250 | 9.500 | .070 | | Carbon | R475300 | B66300 | PX-23-9X70 | FS-F-2 | 68C |
| T1527CM | 8.250 | 9.500 | .070 | | Carbon Matrix | R475300 | B66300 | PX-23-9X70 | FS-F-2 | 68C |

Torque Converter Rings

A4LD, 4R55E, AXOD, AXODE

| ALTO | ID (in) | OD (in) | OAT | * | Material | Ray | BW | Tri | Sonnax | Abco |
|---------|---------|---------|------|---|---------------|---------|--------|-------------|--------|------|
| T1824K1 | 8.250 | 9.688 | .045 | * | Green | R445380 | B45380 | FX-23-19 | FD-F-3 | N/A |
| T1824CF | 8.250 | 9.688 | .045 | * | Carbon | R445380 | B45380 | FX-23-19 | FD-F-3 | N/A |
| T1824CM | 8.250 | 9.688 | .045 | * | Carbon Matrix | R445380 | B45380 | FX-23-19 | FD-F-3 | N/A |
| T1827K1 | 8.250 | 9.688 | .070 | * | Green | R475380 | N/A | FX-23-19X70 | FD-F-5 | N/A |
| T1827CF | 8.250 | 9.688 | .070 | * | Carbon | R475380 | N/A | FX-23-19X70 | FD-F-5 | N/A |
| T1827CM | 8.250 | 9.688 | .070 | * | Carbon Matrix | R475380 | N/A | FX-23-19X70 | FD-F-5 | N/A |

Chry 10 LU, 4R55E, A140, 4R55E, A140, 6HP26, AXOD, AXODE 3.8L

| ALTO | ID (in) | OD (in) | OAT | * | Material | Ray | BW | Tri | Sonnax | Abco |
|---------|---------|---------|------|---|---------------|---------|--------|------------|--------|------|
| T1054K1 | 8.250 | 9.725 | .045 | | Green | R445070 | B45070 | YX-23-3 | FD-F-3 | 64 |
| T1054CF | 8.250 | 9.725 | .045 | | Carbon | R445070 | B45070 | YX-23-3 | FD-F-3 | 64 |
| T1054CM | 8.250 | 9.725 | .045 | | Carbon Matrix | R445070 | B45070 | YX-23-3 | FD-F-3 | 64 |
| T1057K1 | 8.250 | 9.725 | .070 | | Green | R475070 | B66070 | YX-23-3X70 | FD-F-5 | 64A |
| T1057CF | 8.250 | 9.725 | .070 | | Carbon | R475070 | B66070 | YX-23-3X70 | FD-F-5 | 64A |
| T1057CM | 8.250 | 9.725 | .070 | | Carbon Matrix | R475070 | B66070 | YX-23-3X70 | FD-F-5 | 64A |

A340H, A42, A43, A44, A45DE,DL A4LD, 4R55E Front Cover

| ALTO | ID (in) | OD (in) | OAT | * | Material | Ray | BW | Tri | Sonnax | Abco |
|---------|---------|---------|------|---|---------------|---------|--------|------------|--------|------|
| T1074K1 | 8.250 | 10.000 | .045 | | Green | R445040 | B45040 | YX-23-1 | TO-F-1 | 72 |
| T1074CF | 8.250 | 10.000 | .045 | | Carbon | R445040 | B45040 | YX-23-1 | TO-F-1 | 72 |
| T1074CM | 8.250 | 10.000 | .045 | | Carbon Matrix | R445040 | B45040 | YX-23-1 | TO-F-1 | 72 |
| T1077K1 | 8.250 | 10.000 | .070 | | Green | R475040 | B66040 | YX-23-1X70 | TO-F-4 | N/A |
| T1077CF | 8.250 | 10.000 | .070 | | Carbon | R475040 | B66040 | YX-23-1X70 | TO-F-4 | N/A |
| T1077CM | 8.250 | 10.000 | .070 | | Carbon Matrix | R475040 | B66040 | YX-23-1X70 | TO-F-4 | N/A |

A340H

| ALTO | ID (in) | OD (in) | OAT | * | Material | Ray | BW | Tri | Sonnax | Abco |
|---------|---------|---------|------|---|---------------|-----|-----|------------|--------|------|
| T1834K1 | 8.250 | 10.125 | .045 | * | Green | N/A | N/A | YX-23-8 | N/A | 62 |
| T1834CF | 8.250 | 10.125 | .045 | * | Carbon | N/A | N/A | YX-23-8 | N/A | 62 |
| T1834CM | 8.250 | 10.125 | .045 | * | Carbon Matrix | N/A | N/A | YX-23-8 | N/A | 62 |
| T1837K1 | 8.250 | 10.125 | .070 | * | Green | N/A | N/A | YX-23-8X70 | N/A | 62A |
| T1837CF | 8.250 | 10.125 | .070 | * | Carbon | N/A | N/A | YX-23-8X70 | N/A | 62A |
| T1837CM | 8.250 | 10.125 | .070 | * | Carbon Matrix | N/A | N/A | YX-23-8X70 | N/A | 62A |

RL3F01A, RL4F02A, RE4R01A

| ALTO | ID (in) | OD (in) | OAT | * | Material | Ray | BW | Tri | Sonnax | Abco |
|---------|---------|---------|------|---|---------------|---------|--------|-------------|--------|------|
| T1474K1 | 8.313 | 9.250 | .045 | | Green | R445110 | B45110 | JX-23-20 | MZ-F-1 | 68A |
| T1474CF | 8.313 | 9.250 | .045 | | Carbon | R445110 | B45110 | JX-23-20 | MZ-F-1 | 68A |
| T1474CM | 8.313 | 9.250 | .045 | | Carbon Matrix | R445110 | B45110 | JX-23-20 | MZ-F-1 | 68A |
| T1477K1 | 8.313 | 9.250 | .070 | | Green | R475110 | B66110 | JX-23-20X70 | MZ-F-2 | 68B |
| T1477CF | 8.313 | 9.250 | .070 | | Carbon | R475110 | B66110 | JX-23-20X70 | MZ-F-2 | 68B |
| T1477CM | 8.313 | 9.250 | .070 | | Carbon Matrix | R475110 | B66100 | JX-23-20X70 | MZ-F-2 | 68B |

Focus FN, 5HP24

| ALTO | ID (in) | OD (in) | OAT | * | Material | Ray | BW | Tri | Sonnax | Abco |
|---------|---------|---------|------|---|---------------|-----|-----|-------------|--------|------|
| T1844K1 | 8.375 | 9.375 | .045 | | Green | N/A | N/A | PX-23-11 | N/A | N/A |
| T1844CF | 8.375 | 9.375 | .045 | | Carbon | N/A | N/A | PX-23-11 | N/A | N/A |
| T1844CM | 8.375 | 9.375 | .045 | | Carbon Matrix | N/A | N/A | PX-23-11 | N/A | N/A |
| T1847K1 | 8.375 | 9.375 | .070 | | Green | N/A | N/A | PX-23-11X70 | N/A | N/A |
| T1847CF | 8.375 | 9.375 | .070 | | Carbon | N/A | N/A | PX-23-11X70 | N/A | N/A |
| T1847CM | 8.375 | 9.375 | .070 | | Carbon Matrix | N/A | N/A | PX-23-11X70 | N/A | N/A |

Torque Converter Rings

GM 258mm

| ALTO | ID (in) | OD (in) | OAT Material | Ray | BW | Tri | Sonnax | Abco |
|---------|---------|---------|--------------------|---------|--------|-----|--------|------|
| T1384K1 | 8.375 | 9.625 | .045 Green | R445290 | B45290 | N/A | N/A | N/A |
| T1384CF | 8.375 | 9.625 | .045 Carbon | R445290 | B45290 | N/A | N/A | N/A |
| T1384CM | 8.375 | 9.625 | .045 Carbon Matrix | R445290 | B45290 | N/A | N/A | N/A |
| T1387K1 | 8.375 | 9.625 | .070 Green | R475290 | B66290 | N/A | N/A | N/A |
| T1387CF | 8.375 | 9.625 | .070 Carbon | R475290 | B66290 | N/A | N/A | N/A |
| T1387CM | 8.375 | 9.625 | .070 Carbon Matrix | R475290 | B66290 | N/A | N/A | N/A |

Various

| ALTO | ID (in) | OD (in) | OAT Material | Ray | BW | Tri | Sonnax | Abco |
|---------|---------|---------|--------------------|---------|--------|-----|--------|------|
| T1854K1 | 8.380 | 9.440 | .045 Green | R445690 | B45690 | N/A | N/A | N/A |
| T1854CF | 8.380 | 9.440 | .045 Carbon | R445690 | B45690 | N/A | N/A | N/A |
| T1854CM | 8.380 | 9.440 | .045 Carbon Matrix | R445690 | B45690 | N/A | N/A | N/A |

4F27E, FN4A-EL, G4A-EL VW 096, 097, 098 Honda, Sterling

| ALTO | ID (in) | OD (in) | OAT Material | Ray | BW | Tri | Sonnax | Abco |
|---------|---------|---------|--------------------|---------|--------|------------|--------|------|
| T1194K1 | 8.500 | 9.500 | .045 Green | R445090 | B45090 | NX-23-2 | MZ-F-1 | 93 |
| T1194CF | 8.500 | 9.500 | .045 Carbon | R445090 | B45090 | NX-23-2 | MZ-F-1 | 93 |
| T1194CM | 8.500 | 9.500 | .045 Carbon Matrix | R445090 | B45090 | NX-23-2 | MZ-F-1 | 93 |
| T1197K1 | 8.500 | 9.500 | .070 Green | R475090 | B66090 | NX-23-2X70 | MZ-F-2 | 93A |
| T1197CF | 8.500 | 9.500 | .070 Carbon | R475090 | B66090 | NX-23-2X70 | MZ-F-2 | 93A |
| T1197CM | 8.500 | 9.500 | .070 Carbon Matrix | R475090 | B66090 | NX-23-2X70 | MZ-F-2 | 93A |

Various

| ALTO | ID (in) | OD (in) | OAT Material | Ray | BW | Tri | Sonnax | Abco |
|---------|---------|---------|--------------------|---------|--------|-----|--------|------|
| T1864K1 | 8.500 | 9.938 | .045 Green | R445044 | B45044 | N/A | N/A | N/A |
| T1864CF | 8.500 | 9.938 | .045 Carbon | R445044 | B45044 | N/A | N/A | N/A |
| T1864CM | 8.500 | 9.938 | .045 Carbon Matrix | R445044 | B45044 | N/A | N/A | N/A |

A440L

| ALTO | ID (in) | OD (in) | OAT Material | Ray | BW | Tri | Sonnax | Abco |
|---------|---------|---------|--------------------|-----|-----|-------------|--------|------|
| T1874K1 | 8.500 | 10.063 | .045 Green | N/A | N/A | YX-23-10 | N/A | N/A |
| T1874CF | 8.500 | 10.063 | .045 Carbon | N/A | N/A | YX-23-10 | N/A | N/A |
| T1874CM | 8.500 | 10.063 | .045 Carbon Matrix | N/A | N/A | YX-23-10 | N/A | N/A |
| T1877K1 | 8.500 | 10.063 | .070 Green | N/A | N/A | YX-23-10X70 | N/A | N/A |
| T1877CF | 8.500 | 10.063 | .070 Carbon | N/A | N/A | YX-23-10X70 | N/A | N/A |
| T1877CM | 8.500 | 10.063 | .070 Carbon Matrix | N/A | N/A | YX-23-10X70 | N/A | N/A |

6T40

| ALTO | ID (in) | OD (in) | OAT Material | Ray | BW | Tri | Sonnax | Abco |
|---------|---------|---------|--------------------|---------|--------|-----|--------|------|
| T1884K1 | 8.562 | 9.813 | .045 Green | R445680 | B45680 | N/A | N/A | N/A |
| T1884CF | 8.562 | 9.813 | .045 Carbon | R445680 | B45680 | N/A | N/A | N/A |
| T1884CM | 8.562 | 9.813 | .045 Carbon Matrix | R445680 | B45680 | N/A | N/A | N/A |

A440F

| ALTO | ID (in) | OD (in) | OAT Material | Ray | BW | Tri | Sonnax | Abco |
|---------|---------|---------|--------------------|-----|-----|-------------|--------|------|
| T1894K1 | 8.625 | 10.125 | .045 Green | N/A | N/A | YX-23-11 | N/A | N/A |
| T1894CF | 8.625 | 10.125 | .045 Carbon | N/A | N/A | YX-23-11 | N/A | N/A |
| T1894CM | 8.625 | 10.125 | .045 Carbon Matrix | N/A | N/A | YX-23-11 | N/A | N/A |
| T1897K1 | 8.625 | 10.125 | .070 Green | N/A | N/A | YX-23-11X70 | N/A | N/A |
| T1897CF | 8.625 | 10.125 | .070 Carbon | N/A | N/A | YX-23-11X70 | N/A | N/A |
| T1897CM | 8.625 | 10.125 | .070 Carbon Matrix | N/A | N/A | YX-23-11X70 | N/A | N/A |

Torque Converter Rings

Chry 10 LU, A440F AW55-50SN

| ALTO | ID (in) | OD (in) | OAT | * | Material | Ray | BW | Tri | Sonnax | Abco |
|---------|---------|---------|------|---|---------------|---------|--------|-----|--------|------|
| T1494K1 | 8.625 | 10.250 | .045 | | Green | R445280 | B45280 | N/A | N/A | N/A |
| T1494CF | 8.625 | 10.250 | .045 | | Carbon | R445280 | B45280 | N/A | N/A | N/A |
| T1494CM | 8.625 | 10.250 | .045 | | Carbon Matrix | R445280 | B45280 | N/A | N/A | N/A |
| T1497K1 | 8.625 | 10.250 | .070 | | Green | R475280 | B66280 | N/A | N/A | N/A |
| T1497CF | 8.625 | 10.250 | .070 | | Carbon | R475280 | B66280 | N/A | N/A | N/A |
| T1497CM | 8.625 | 10.250 | .070 | | Carbon Matrix | R475280 | B66280 | N/A | N/A | N/A |

A440L

| ALTO | ID (in) | OD (in) | OAT | * | Material | Ray | BW | Tri | Sonnax | Abco |
|---------|---------|---------|------|---|---------------|-----|-----|------------|--------|------|
| T1904K1 | 8.625 | 10.375 | .045 | * | Green | N/A | N/A | YX-23-7 | TO-F-6 | N/A |
| T1904CF | 8.625 | 10.375 | .045 | * | Carbon | N/A | N/A | YX-23-7 | TO-F-6 | N/A |
| T1904CM | 8.625 | 10.375 | .045 | * | Carbon Matrix | N/A | N/A | YX-23-7 | TO-F-6 | N/A |
| T1907K1 | 8.625 | 10.375 | .070 | * | Green | N/A | N/A | YX-23-7X70 | N/A | N/A |
| T1907CF | 8.625 | 10.375 | .070 | * | Carbon | N/A | N/A | YX-23-7X70 | N/A | N/A |
| T1907CM | 8.625 | 10.375 | .070 | * | Carbon Matrix | N/A | N/A | YX-23-7X70 | N/A | N/A |

BTR

| ALTO | ID (in) | OD (in) | OAT | * | Material | Ray | BW | Tri | Sonnax | Abco |
|---------|---------|---------|------|---|---------------|---------|--------|-------------|--------|------|
| T1414K1 | 8.625 | 10.500 | .045 | | Green | R445030 | B45030 | FX-23-13 | FD-F-8 | N/A |
| T1414CF | 8.625 | 10.500 | .045 | | Carbon | R445030 | B45030 | FX-23-13 | FD-F-8 | N/A |
| T1414CM | 8.625 | 10.500 | .045 | | Carbon Matrix | R445030 | B45030 | FX-23-13 | FD-F-8 | N/A |
| T1417K1 | 8.625 | 10.500 | .070 | | Green | R475030 | B66030 | FX-23-13X70 | N/A | N/A |
| T1417CF | 8.625 | 10.500 | .070 | | Carbon | R475030 | B66030 | FX-23-13X70 | N/A | N/A |
| T1417CM | 8.625 | 10.500 | .070 | | Carbon Matrix | R475030 | B66030 | FX-23-13X70 | N/A | N/A |

Various

| ALTO | ID (in) | OD (in) | OAT | * | Material | Ray | BW | Tri | Sonnax | Abco |
|---------|---------|---------|------|---|---------------|---------|--------|-----|--------|------|
| T1914K1 | 8.625 | 10.750 | .045 | * | Green | R445030 | B45030 | N/A | N/A | N/A |
| T1914CF | 8.625 | 10.750 | .045 | * | Carbon | R445030 | B45030 | N/A | N/A | N/A |
| T1914CM | 8.625 | 10.750 | .045 | * | Carbon Matrix | R445030 | B45030 | N/A | N/A | N/A |

G4A, 4EAT, G4A-EL Late

| ALTO | ID (in) | OD (in) | OAT | * | Material | Ray | BW | Tri | Sonnax | Abco |
|---------|---------|---------|------|---|---------------|-----|-----|-------------|--------|------|
| T1924K1 | 8.688 | 9.500 | .045 | * | Green | N/A | N/A | JX-23-15 | JA-F-1 | 86B |
| T1924CF | 8.688 | 9.500 | .045 | * | Carbon | N/A | N/A | JX-23-15 | JA-F-1 | 86B |
| T1924CM | 8.688 | 9.500 | .045 | * | Carbon Matrix | N/A | N/A | JX-23-15 | JA-F-1 | 86B |
| T1927K1 | 8.688 | 9.500 | .070 | * | Green | N/A | N/A | JX-23-15X70 | JA-F-3 | 86C |
| T1927CF | 8.688 | 9.500 | .070 | * | Carbon | N/A | N/A | JX-23-15X70 | JA-F-3 | 86C |
| T1927CM | 8.688 | 9.500 | .070 | * | Carbon Matrix | N/A | N/A | JX-23-15X70 | JA-F-3 | 86C |

JF506E, RE4F04A/V RE4R01A, 5HP19, KM175-176

| ALTO | ID (in) | OD (in) | OAT | * | Material | Ray | BW | Tri | Sonnax | Abco |
|---------|---------|---------|------|---|---------------|---------|--------|-------------|--------|---------|
| T1064K1 | 8.750 | 9.857 | .045 | | Green | R445050 | B45050 | JX-23-22 | NI-F-3 | 79,95 |
| T1064CF | 8.750 | 9.857 | .045 | | Carbon | R445050 | B45050 | JX-23-22 | NI-F-3 | 79,95 |
| T1064CM | 8.750 | 9.857 | .045 | | Carbon Matrix | R445050 | B45050 | JX-23-22 | NI-F-3 | 79,95 |
| T1067K1 | 8.750 | 9.857 | .070 | | Green | R475050 | B66050 | JX-23-22X70 | NI-F-4 | 79A,95A |
| T1067CF | 8.750 | 9.857 | .070 | | Carbon | R475050 | B66050 | JX-23-22X70 | NI-F-4 | 79A,95A |
| T1067CM | 8.750 | 9.857 | .070 | | Carbon Matrix | R475050 | B66050 | JX-23-22X70 | NI-F-4 | 79A,95A |

Torque Converter Rings

41TE, 42LE 10 B7TA, B7VA, B7YA

| ALTO | ID (in) | OD (in) | OAT | * | Material | Ray | BW | Tri | Sonnax | Abco |
|---------|---------|---------|------|---|---------------|---------|--------|-------------|--------|------|
| T1354K1 | 8.750 | 10.000 | .045 | | Green | R445200 | B45200 | TX-23-17 | N/A | N/A |
| T1354CF | 8.750 | 10.000 | .045 | | Carbon | R445200 | B45200 | TX-23-17 | N/A | N/A |
| T1354CM | 8.750 | 10.000 | .045 | | Carbon Matrix | R445200 | B45200 | TX-23-17 | N/A | N/A |
| T1357K1 | 8.750 | 10.000 | .070 | | Green | R475200 | B66200 | TX-23-17X70 | N/A | N/A |
| T1357CF | 8.750 | 10.000 | .070 | | Carbon | R475200 | B66200 | TX-23-17X70 | N/A | N/A |
| T1357CM | 8.750 | 10.000 | .070 | | Carbon Matrix | R475200 | B66200 | TX-23-17X70 | N/A | N/A |

Chrysler 9-1/2 LU

| ALTO | ID (in) | OD (in) | OAT | * | Material | Ray | BW | Tri | Sonnax | Abco |
|---------|---------|---------|------|---|---------------|-----|-----|-----|--------|------|
| T1087K1 | 8.750 | 10.250 | .070 | | Green | N/A | N/A | N/A | N/A | N/A |
| T1087CF | 8.750 | 10.250 | .070 | | Carbon | N/A | N/A | N/A | N/A | N/A |
| T1087CM | 8.750 | 10.250 | .070 | | Carbon Matrix | N/A | N/A | N/A | N/A | N/A |

Chrysler 10 LU

| ALTO | ID (in) | OD (in) | OAT | * | Material | Ray | BW | Tri | Sonnax | Abco |
|---------|---------|---------|------|---|---------------|-----|-----|-------------|---------|------|
| T1934K1 | 8.750 | 10.313 | .045 | * | Green | N/A | N/A | TX-23-11 | CH-F-12 | N/A |
| T1934CF | 8.750 | 10.313 | .045 | * | Carbon | N/A | N/A | TX-23-11 | CH-F-12 | N/A |
| T1934CM | 8.750 | 10.313 | .045 | * | Carbon Matrix | N/A | N/A | TX-23-11 | CH-F-12 | N/A |
| T1937K1 | 8.750 | 10.313 | .070 | * | Green | N/A | N/A | TX-23-11X70 | CH-F-13 | N/A |
| T1937CF | 8.750 | 10.313 | .070 | * | Carbon | N/A | N/A | TX-23-11X70 | CH-F-13 | N/A |
| T1937CM | 8.750 | 10.313 | .070 | * | Carbon Matrix | N/A | N/A | TX-23-11X70 | CH-F-13 | N/A |

Chry 10 LU - Floater

| ALTO | ID (in) | OD (in) | OAT | * | Material | Ray | BW | Tri | Sonnax | Abco |
|----------|---------|---------|------|---|---------------|---------|-----|-------------|--------|------|
| T1427K1X | 8.800 | 10.300 | .070 | * | Green | R460000 | N/A | TX-26-11X70 | N/A | 98-A |
| T1427CFX | 8.800 | 10.300 | .070 | * | Carbon | R460000 | N/A | TX-26-11X70 | N/A | 98-A |
| T1427CMX | 8.800 | 10.300 | .070 | * | Carbon Matrix | R460000 | N/A | TX-26-11X70 | N/A | 98-A |

RE4F04A/V

| ALTO | ID (in) | OD (in) | OAT | * | Material | Ray | BW | Tri | Sonnax | Abco |
|---------|---------|---------|------|---|---------------|-----|-----|-------------|--------|------|
| T1944K1 | 8.813 | 9.813 | .045 | * | Green | N/A | N/A | JX-23-32 | JA-F-7 | N/A |
| T1944CF | 8.813 | 9.813 | .045 | * | Carbon | N/A | N/A | JX-23-32 | JA-F-7 | N/A |
| T1944CM | 8.813 | 9.813 | .045 | * | Carbon Matrix | N/A | N/A | JX-23-32 | JA-F-7 | N/A |
| T1947K1 | 8.813 | 9.813 | .070 | * | Green | N/A | N/A | JX-23-32X70 | JA-F-8 | N/A |
| T1947CF | 8.813 | 9.813 | .070 | * | Carbon | N/A | N/A | JX-23-32X70 | JA-F-8 | N/A |
| T1947CM | 8.813 | 9.813 | .070 | * | Carbon Matrix | N/A | N/A | JX-23-32X70 | JA-F-8 | N/A |

B7TA, B7VA, B7YA

| ALTO | ID (in) | OD (in) | OAT | * | Material | Ray | BW | Tri | Sonnax | Abco |
|---------|---------|---------|------|---|---------------|---------|--------|-----|--------|------|
| T1954K1 | 8.875 | 9.938 | .045 | * | Green | R445450 | B45450 | N/A | N/A | N/A |
| T1954CF | 8.875 | 9.938 | .045 | * | Carbon | R445450 | B45450 | N/A | N/A | N/A |
| T1954CM | 8.875 | 9.938 | .045 | * | Carbon Matrix | R445450 | B45450 | N/A | N/A | N/A |
| T1957K1 | 8.875 | 9.938 | .070 | * | Green | R475450 | B66450 | N/A | N/A | N/A |
| T1957CF | 8.875 | 9.938 | .070 | * | Carbon | R475450 | B66450 | N/A | N/A | N/A |
| T1957CM | 8.875 | 9.938 | .070 | * | Carbon Matrix | R475450 | B66450 | N/A | N/A | N/A |

4HP24

| ALTO | ID (in) | OD (in) | OAT | * | Material | Ray | BW | Tri | Sonnax | Abco |
|---------|---------|---------|------|---|---------------|---------|--------|-----|--------|------|
| T1964K1 | 8.938 | 9.938 | .045 | * | Green | R445064 | B45064 | N/A | N/A | N/A |
| T1964CF | 8.938 | 9.938 | .045 | * | Carbon | R445064 | B45064 | N/A | N/A | N/A |
| T1964CM | 8.938 | 9.938 | .045 | * | Carbon Matrix | R445064 | B45064 | N/A | N/A | N/A |

Torque Converter Rings

RL4F02A

| ALTO | ID (in) | OD (in) | OAT | * | Material | Ray | BW | Tri | Sonnax | Abco |
|---------|---------|---------|------|---|---------------|---------|--------|-----|--------|------|
| T1304K1 | 9.000 | 9.750 | .045 | | Green | R445060 | B45060 | N/A | N/A | N/A |
| T1304CF | 9.000 | 9.750 | .045 | | Carbon | R445060 | B45060 | N/A | N/A | N/A |
| T1304CM | 9.000 | 9.750 | .045 | | Carbon Matrix | R445060 | B45060 | N/A | N/A | N/A |
| T1307K1 | 9.000 | 9.750 | .070 | | Green | R475060 | B66060 | N/A | N/A | N/A |
| T1307CF | 9.000 | 9.750 | .070 | | Carbon | R475060 | B66060 | N/A | N/A | N/A |
| T1307CM | 9.000 | 9.750 | .070 | | Carbon Matrix | R475060 | B66060 | N/A | N/A | N/A |

4HP22, A999, RL4F02A

| ALTO | ID (in) | OD (in) | OAT | * | Material | Ray | BW | Tri | Sonnax | Abco |
|---------|---------|---------|------|---|---------------|-----|-----|-------------|--------|------|
| T1974K1 | 9.000 | 9.875 | .045 | * | Green | N/A | N/A | JX-23-10 | NI-F-1 | 67 |
| T1974CF | 9.000 | 9.875 | .045 | * | Carbon | N/A | N/A | JX-23-10 | NI-F-1 | 67 |
| T1974CM | 9.000 | 9.875 | .045 | * | Carbon Matrix | N/A | N/A | JX-23-10 | NI-F-1 | 67 |
| T1977K1 | 9.000 | 9.875 | .070 | * | Green | N/A | N/A | JX-23-10X70 | NI-F-2 | 67C |
| T1977CF | 9.000 | 9.875 | .070 | * | Carbon | N/A | N/A | JX-23-10X70 | NI-F-2 | 67C |
| T1977CM | 9.000 | 9.875 | .070 | * | Carbon Matrix | N/A | N/A | JX-23-10X70 | NI-F-2 | 67C |

Various

| ALTO | ID (in) | OD (in) | OAT | * | Material | Ray | BW | Tri | Sonnax | Abco |
|---------|---------|---------|------|---|---------------|---------|--------|-----|--------|------|
| T1284K1 | 9.000 | 10.000 | .045 | | Green | R445370 | B45370 | N/A | N/A | N/A |
| T1284CF | 9.000 | 10.000 | .045 | | Carbon | R445370 | B45370 | N/A | N/A | N/A |
| T1284CM | 9.000 | 10.000 | .045 | | Carbon Matrix | R445370 | B45370 | N/A | N/A | N/A |
| T1287K1 | 9.000 | 10.000 | .070 | | Green | R475370 | B66370 | N/A | N/A | N/A |
| T1287CF | 9.000 | 10.000 | .070 | | Carbon | R475370 | B66370 | N/A | N/A | N/A |
| T1287CM | 9.000 | 10.000 | .070 | | Carbon Matrix | R475370 | B66370 | N/A | N/A | N/A |

A440L, A442F, U140E

| ALTO | ID (in) | OD (in) | OAT | * | Material | Ray | BW | Tri | Sonnax | Abco |
|---------|---------|---------|------|---|---------------|---------|--------|-----|--------|------|
| T1984K1 | 9.000 | 10.500 | .045 | * | Green | R445260 | B45260 | N/A | N/A | N/A |
| T1984CF | 9.000 | 10.500 | .045 | * | Carbon | R445260 | B45260 | N/A | N/A | N/A |
| T1984CM | 9.000 | 10.500 | .045 | * | Carbon Matrix | R445260 | B45260 | N/A | N/A | N/A |
| T1987K1 | 9.000 | 10.500 | .070 | * | Green | R475260 | B66260 | N/A | N/A | N/A |
| T1987CF | 9.000 | 10.500 | .070 | * | Carbon | R475260 | B66260 | N/A | N/A | N/A |
| T1987CM | 9.000 | 10.500 | .070 | * | Carbon Matrix | R475260 | B66260 | N/A | N/A | N/A |

Chrysler 10-3/4 LU

| ALTO | ID (in) | OD (in) | OAT | * | Material | Ray | BW | Tri | Sonnax | Abco |
|---------|---------|---------|------|---|---------------|-----|-----|-------------|---------|------|
| T1994K1 | 9.000 | 10.750 | .045 | | Green | N/A | N/A | TX-23-14 | CH-F-14 | N/A |
| T1994CF | 9.000 | 10.750 | .045 | | Carbon | N/A | N/A | TX-23-14 | CH-F-14 | N/A |
| T1994CM | 9.000 | 10.750 | .045 | | Carbon Matrix | N/A | N/A | TX-23-14 | CH-F-14 | N/A |
| T1997K1 | 9.000 | 10.750 | .070 | | Green | N/A | N/A | TX-23-14X70 | CH-F-15 | N/A |
| T1997CF | 9.000 | 10.750 | .070 | | Carbon | N/A | N/A | TX-23-14X70 | CH-F-15 | N/A |
| T1997CM | 9.000 | 10.750 | .070 | | Carbon Matrix | N/A | N/A | TX-23-14X70 | CH-F-15 | N/A |

Various

| ALTO | ID (in) | OD (in) | OAT | * | Material | Ray | BW | Tri | Sonnax | Abco |
|---------|---------|---------|------|---|---------------|---------|--------|-----|--------|------|
| T2004K1 | 9.060 | 9.813 | .045 | * | Green | R445340 | B45340 | N/A | N/A | N/A |
| T2004CF | 9.060 | 9.813 | .045 | * | Carbon | R445340 | B45340 | N/A | N/A | N/A |
| T2004CM | 9.060 | 9.813 | .045 | * | Carbon Matrix | R445340 | B45340 | N/A | N/A | N/A |

Torque Converter Rings

Honda G4, Acura Legend

| ALTO | ID (in) | OD (in) | OAT | * | Material | Ray | BW | Tri | Sonnax | Abco |
|---------|---------|---------|------|---|---------------|---------|--------|------------|--------|------|
| T1324K1 | 9.125 | 10.125 | .045 | | Green | R445330 | B45330 | NX-23-5 | HO-F-3 | N/A |
| T1324CF | 9.125 | 10.125 | .045 | | Carbon | R445330 | B45330 | NX-23-5 | HO-F-3 | N/A |
| T1324CM | 9.125 | 10.125 | .045 | | Carbon Matrix | R445330 | B45330 | NX-23-5 | HO-F-3 | N/A |
| T1327K1 | 9.125 | 10.125 | .070 | | Green | R475330 | B66330 | NX-23-5X70 | HO-F-4 | N/A |
| T1327CF | 9.125 | 10.125 | .070 | | Carbon | R475330 | B66330 | NX-23-5X70 | HO-F-4 | N/A |
| T1327CM | 9.125 | 10.125 | .070 | | Carbon Matrix | R475330 | B66330 | NX-23-5X70 | HO-F-4 | N/A |

Chrysler 10-3/4 LU

| ALTO | ID (in) | OD (in) | OAT | * | Material | Ray | BW | Tri | Sonnax | Abco |
|---------|---------|---------|------|---|---------------|-----|-----|----------|--------|------|
| T2014K1 | 9.125 | 10.500 | .045 | * | Green | N/A | N/A | TX-23X | N/A | N/A |
| T2014CF | 9.125 | 10.500 | .045 | * | Carbon | N/A | N/A | TX-23X | N/A | N/A |
| T2014CM | 9.125 | 10.500 | .045 | * | Carbon Matrix | N/A | N/A | TX-23X | N/A | N/A |
| T2017K1 | 9.125 | 10.500 | .070 | * | Green | N/A | N/A | TX-23X70 | N/A | N/A |
| T2017CF | 9.125 | 10.500 | .070 | * | Carbon | N/A | N/A | TX-23X70 | N/A | N/A |
| T2017CM | 9.125 | 10.500 | .070 | * | Carbon Matrix | N/A | N/A | TX-23X70 | N/A | N/A |

RE4R03A

| ALTO | ID (in) | OD (in) | OAT | * | Material | Ray | BW | Tri | Sonnax | Abco |
|---------|---------|---------|------|---|---------------|-----|-----|----------|--------|------|
| T1094K1 | 9.125 | 10.563 | .045 | | Green | N/A | N/A | TX-22X | CH-F-1 | 55B |
| T1094CF | 9.125 | 10.563 | .045 | | Carbon | N/A | N/A | TX-22X | CH-F-1 | 55B |
| T1094CM | 9.125 | 10.563 | .045 | | Carbon Matrix | N/A | N/A | TX-22X | CH-F-1 | 55B |
| T1097K1 | 9.125 | 10.563 | .070 | | Green | N/A | N/A | TX-22X70 | CH-F-2 | 55A |
| T1097CF | 9.125 | 10.563 | .070 | | Carbon | N/A | N/A | TX-22X70 | CH-F-2 | 55A |
| T1097CM | 9.125 | 10.563 | .070 | | Carbon Matrix | N/A | N/A | TX-22X70 | CH-F-2 | 55A |

Chry 10-3/4

| ALTO | ID (in) | OD (in) | OAT | * | Material | Ray | BW | Tri | Sonnax | Abco |
|---------|---------|---------|------|---|---------------|---------|--------|-----|--------|------|
| T1434K1 | 9.125 | 10.750 | .045 | | Green | R445180 | B45180 | N/A | N/A | N/A |
| T1434CF | 9.125 | 10.750 | .045 | | Carbon | R445180 | B45180 | N/A | N/A | N/A |
| T1434CM | 9.125 | 10.750 | .045 | | Carbon Matrix | R445180 | B45180 | N/A | N/A | N/A |
| T1437K1 | 9.125 | 10.750 | .070 | | Green | R475180 | B66180 | N/A | N/A | N/A |
| T1437CF | 9.125 | 10.750 | .070 | | Carbon | R475180 | B66180 | N/A | N/A | N/A |
| T1437CM | 9.125 | 10.750 | .070 | | Carbon Matrix | R475180 | B66180 | N/A | N/A | N/A |

45RFE, 545RFE, A518

| ALTO | ID (in) | OD (in) | OAT | * | Material | Ray | BW | Tri | Sonnax | Abco |
|---------|---------|---------|------|---|---------------|---------|--------|-------------|---------|------|
| T2024K1 | 9.170 | 10.495 | .045 | * | Green | R445500 | N/A | TX-23-19 | N/A | N/A |
| T2024CF | 9.170 | 10.495 | .045 | * | Carbon | R445500 | N/A | TX-23-19 | N/A | N/A |
| T2024CM | 9.170 | 10.495 | .045 | * | Carbon Matrix | R445500 | N/A | TX-23-19 | N/A | N/A |
| T2027K1 | 9.170 | 10.495 | .070 | * | Green | R475500 | B66500 | TX-23-19X70 | CH-F-20 | N/A |
| T2027CF | 9.170 | 10.495 | .070 | * | Carbon | R475500 | B66500 | TX-23-19X70 | CH-F-20 | N/A |
| T2027CM | 9.170 | 10.495 | .070 | * | Carbon Matrix | R475500 | B66500 | TX-23-19X70 | CH-F-20 | N/A |

Various

| ALTO | ID (in) | OD (in) | OAT | * | Material | Ray | BW | Tri | Sonnax | Abco |
|---------|---------|---------|------|---|---------------|---------|-----|-----|--------|------|
| T1277K1 | 9.185 | 10.780 | .070 | | Green | R450000 | N/A | N/A | N/A | N/A |
| T1277CF | 9.185 | 10.780 | .070 | | Carbon | R450000 | N/A | N/A | N/A | N/A |
| T1277CM | 9.185 | 10.780 | .070 | | Carbon Matrix | R450000 | N/A | N/A | N/A | N/A |

Torque Converter Rings

AODE W/ Modulated Groove

| ALTO | ID (in) | OD (in) | OAT | * | Material | Ray | BW | Tri | Sonnax | Abco |
|----------|---------|---------|------|---|---------------|-----|-----|-----|--------|------|
| T1174K1G | 9.250 | 10.500 | .045 | | Green | N/A | N/A | N/A | N/A | N/A |
| T1174CFG | 9.250 | 10.500 | .045 | | Carbon | N/A | N/A | N/A | N/A | N/A |
| T1174CMG | 9.250 | 10.500 | .045 | | Carbon Matrix | N/A | N/A | N/A | N/A | N/A |
| T1177K1G | 9.250 | 10.500 | .070 | | Green | N/A | N/A | N/A | N/A | N/A |
| T1177CFG | 9.250 | 10.500 | .070 | | Carbon | N/A | N/A | N/A | N/A | N/A |
| T1177CMG | 9.250 | 10.500 | .070 | | Carbon Matrix | N/A | N/A | N/A | N/A | N/A |

Chry 10-3/4, RE4R03A

| ALTO | ID (in) | OD (in) | OAT | * | Material | Ray | BW | Tri | Sonnax | Abco |
|---------|---------|---------|------|---|---------------|---------|--------|-----|--------|------|
| T1264K1 | 9.250 | 10.563 | .045 | | Green | R445190 | B45190 | N/A | N/A | N/A |
| T1264CF | 9.250 | 10.563 | .045 | | Carbon | R445190 | B45190 | N/A | N/A | N/A |
| T1264CM | 9.250 | 10.563 | .045 | | Carbon Matrix | R445190 | B45190 | N/A | N/A | N/A |
| T1267K1 | 9.250 | 10.563 | .070 | | Green | R475190 | B66190 | N/A | N/A | N/A |
| T1267CF | 9.250 | 10.563 | .070 | | Carbon | R475190 | B66190 | N/A | N/A | N/A |
| T1267CM | 9.250 | 10.563 | .070 | | Carbon Matrix | R475190 | B66190 | N/A | N/A | N/A |

Chrysler 10-3/4 LU

| ALTO | ID (in) | OD (in) | OAT | * | Material | Ray | BW | Tri | Sonnax | Abco |
|---------|---------|---------|------|---|---------------|-----|-----|------------|--------|------|
| T2034K1 | 9.250 | 10.750 | .045 | * | Green | N/A | N/A | TX-23-4 | N/A | N/A |
| T2034CF | 9.250 | 10.750 | .045 | * | Carbon | N/A | N/A | TX-23-4 | N/A | N/A |
| T2034CM | 9.250 | 10.750 | .045 | * | Carbon Matrix | N/A | N/A | TX-23-4 | N/A | N/A |
| T2037K1 | 9.250 | 10.750 | .070 | * | Green | N/A | N/A | TX-23-4X70 | N/A | N/A |
| T2037CF | 9.250 | 10.750 | .070 | * | Carbon | N/A | N/A | TX-23-4X70 | N/A | N/A |
| T2037CM | 9.250 | 10.750 | .070 | * | Carbon Matrix | N/A | N/A | TX-23-4X70 | N/A | N/A |

AODE W/ Modulated Groove

| ALTO | ID (in) | OD (in) | OAT | * | Material | Ray | BW | Tri | Sonnax | Abco |
|----------|---------|---------|------|---|---------------|-----|-----|--------------|---------|------|
| T2044K1G | 9.313 | 10.563 | .045 | * | Green | N/A | N/A | FX-23-26M | FD-F-14 | N/A |
| T2044CFG | 9.313 | 10.563 | .045 | * | Carbon | N/A | N/A | FX-23-26M | FD-F-14 | N/A |
| T2044CMG | 9.313 | 10.563 | .045 | * | Carbon Matrix | N/A | N/A | FX-23-26M | FD-F-14 | N/A |
| T2047K1G | 9.313 | 10.563 | .070 | * | Green | N/A | N/A | FX-23-26MX70 | N/A | N/A |
| T2047CFG | 9.313 | 10.563 | .070 | * | Carbon | N/A | N/A | FX-23-26MX70 | N/A | N/A |
| T2047CMG | 9.313 | 10.563 | .070 | * | Carbon Matrix | N/A | N/A | FX-23-26MX70 | N/A | N/A |

MPYA, 5HP30

| ALTO | ID (in) | OD (in) | OAT | * | Material | Ray | BW | Tri | Sonnax | Abco |
|---------|---------|---------|------|---|---------------|---------|--------|-------------|--------|------|
| T1334K1 | 9.350 | 10.135 | .045 | | Green | R445330 | B45330 | PX-23-10 | N/A | N/A |
| T1334CF | 9.350 | 10.135 | .045 | | Carbon | R445330 | B45330 | PX-23-10 | N/A | N/A |
| T1334CM | 9.350 | 10.135 | .045 | | Carbon Matrix | R445330 | B45330 | PX-23-10 | N/A | N/A |
| T1337K1 | 9.350 | 10.135 | .070 | | Green | R475330 | B66330 | PX-23-10X70 | N/A | N/A |
| T1337CF | 9.350 | 10.135 | .070 | | Carbon | R475330 | B66330 | PX-23-10X70 | N/A | N/A |
| T1337CM | 9.350 | 10.135 | .070 | | Carbon Matrix | R475330 | B66330 | PX-23-10X70 | N/A | N/A |

Various

| ALTO | ID (in) | OD (in) | OAT | * | Material | Ray | BW | Tri | Sonnax | Abco |
|---------|---------|---------|------|---|---------------|-----|-----|-----|--------|------|
| T2054K1 | 9.375 | 10.250 | .045 | | Green | N/A | N/A | N/A | RE-F-1 | N/A |
| T2054CF | 9.375 | 10.250 | .045 | | Carbon | N/A | N/A | N/A | RE-F-1 | N/A |
| T2054CM | 9.375 | 10.250 | .045 | | Carbon Matrix | N/A | N/A | N/A | RE-F-1 | N/A |

Torque Converter Rings

GM 265mm

| ALTO | ID (in) | OD (in) | OAT | * | Material | Ray | BW | Tri | Sonnax | Abco |
|---------|---------|---------|------|---|---------------|---------|--------|-------------|---------|------|
| T1294K1 | 9.375 | 10.375 | .045 | | Green | R445270 | B45270 | SX-23-32 | GM-F-9 | N/A |
| T1294CF | 9.375 | 10.375 | .045 | | Carbon | R445270 | B45270 | SX-23-32 | GM-F-9 | N/A |
| T1294CM | 9.375 | 10.375 | .045 | | Carbon Matrix | R445270 | B45270 | SX-23-32 | GM-F-9 | N/A |
| T1297K1 | 9.375 | 10.375 | .070 | | Green | R475270 | B66270 | SX-23-32X70 | GM-F-11 | N/A |
| T1297CF | 9.375 | 10.375 | .070 | | Carbon | R475270 | B66270 | SX-23-32X70 | GM-F-11 | N/A |
| T1297CM | 9.375 | 10.375 | .070 | | Carbon Matrix | R475270 | B66270 | SX-23-32X70 | GM-F-11 | N/A |

4R100, 5R110W, JR403E, RE4R03A

| ALTO | ID (in) | OD (in) | OAT | * | Material | Ray | BW | Tri | Sonnax | Abco |
|---------|---------|---------|------|---|---------------|---------|--------|-------------|--------|------|
| T1344K1 | 9.500 | 10.750 | .045 | | Green | R445020 | B45020 | JX-23-23 | JA-F-5 | 80 |
| T1344CF | 9.500 | 10.750 | .045 | | Carbon | R445020 | B45020 | JX-23-23 | JA-F-5 | 80 |
| T1344CM | 9.500 | 10.750 | .045 | | Carbon Matrix | R445020 | B45020 | JX-23-23 | JA-F-5 | 80 |
| T1347K1 | 9.500 | 10.750 | .070 | | Green | R475020 | B66020 | JX-23-23X70 | JA-F-6 | 80A |
| T1347CF | 9.500 | 10.750 | .070 | | Carbon | R475020 | B66020 | JX-23-23X70 | JA-F-6 | 80A |
| T1347CM | 9.500 | 10.750 | .070 | | Carbon Matrix | R475020 | B66020 | JX-23-23X70 | JA-F-6 | 80A |

Various

| ALTO | ID (in) | OD (in) | OAT | * | Material | Ray | BW | Tri | Sonnax | Abco |
|---------|---------|---------|------|---|---------------|-----|-----|-----|--------|------|
| T1214K1 | 9.500 | 11.250 | .045 | * | Green | N/A | N/A | N/A | N/A | N/A |
| T1214CF | 9.500 | 11.250 | .045 | * | Carbon | N/A | N/A | N/A | N/A | N/A |
| T1214CM | 9.500 | 11.250 | .045 | * | Carbon Matrix | N/A | N/A | N/A | N/A | N/A |

450-43LE

| ALTO | ID (in) | OD (in) | OAT | * | Material | Ray | BW | Tri | Sonnax | Abco |
|---------|---------|---------|------|---|---------------|---------|--------|-----|--------|------|
| T2064K1 | 9.560 | 11.000 | .045 | * | Green | R445440 | B45440 | N/A | N/A | N/A |
| T2064CF | 9.560 | 11.000 | .045 | * | Carbon | R445440 | B45440 | N/A | N/A | N/A |
| T2064CM | 9.560 | 11.000 | .045 | * | Carbon Matrix | R445440 | B45440 | N/A | N/A | N/A |
| T2067K1 | 9.560 | 11.000 | .070 | * | Green | R475440 | B66440 | N/A | N/A | N/A |
| T2067CF | 9.560 | 11.000 | .070 | * | Carbon | R475440 | B66440 | N/A | N/A | N/A |
| T2067CM | 9.560 | 11.000 | .070 | * | Carbon Matrix | R475440 | B66440 | N/A | N/A | N/A |

Various

| ALTO | ID (in) | OD (in) | OAT | * | Material | Ray | BW | Tri | Sonnax | Abco |
|---------|---------|---------|------|---|---------------|---------|--------|-----|--------|------|
| T2074K1 | 9.700 | 11.250 | .045 | * | Green | R445410 | B45410 | N/A | N/A | N/A |
| T2074CF | 9.700 | 11.250 | .045 | * | Carbon | R445410 | B45410 | N/A | N/A | N/A |
| T2074CM | 9.700 | 11.250 | .045 | * | Carbon Matrix | R445410 | B45410 | N/A | N/A | N/A |

4R100, Drive Ring

| ALTO | ID (in) | OD (in) | OAT | * | Material | Ray | BW | Tri | Sonnax | Abco |
|---------|---------|---------|------|---|---------------|-----|-----|-------------|--------|------|
| T2084K1 | 9.813 | 10.844 | .045 | * | Green | N/A | N/A | FX-23-49 | N/A | N/A |
| T2084CF | 9.813 | 10.844 | .045 | * | Carbon | N/A | N/A | FX-23-49 | N/A | N/A |
| T2084CM | 9.813 | 10.844 | .045 | * | Carbon Matrix | N/A | N/A | FX-23-49 | N/A | N/A |
| T2087K1 | 9.813 | 10.844 | .070 | * | Green | N/A | N/A | FX-23-49X70 | N/A | N/A |
| T2087CF | 9.813 | 10.844 | .070 | * | Carbon | N/A | N/A | FX-23-49X70 | N/A | N/A |
| T2087CM | 9.813 | 10.844 | .070 | * | Carbon Matrix | N/A | N/A | FX-23-49X70 | N/A | N/A |

4R100, 5R110W

| ALTO | ID (in) | OD (in) | OAT | * | Material | Ray | BW | Tri | Sonnax | Abco |
|---------|---------|---------|------|---|---------------|-----|-----|-------------|--------|------|
| T2094K1 | 9.813 | 11.125 | .045 | * | Green | N/A | N/A | FX-23-52 | N/A | N/A |
| T2094CF | 9.813 | 11.125 | .045 | * | Carbon | N/A | N/A | FX-23-52 | N/A | N/A |
| T2094CM | 9.813 | 11.125 | .045 | * | Carbon Matrix | N/A | N/A | FX-23-52 | N/A | N/A |
| T2097K1 | 9.813 | 11.125 | .070 | * | Green | N/A | N/A | FX-23-52X70 | N/A | N/A |
| T2097CF | 9.813 | 11.125 | .070 | * | Carbon | N/A | N/A | FX-23-52X70 | N/A | N/A |
| T2097CM | 9.813 | 11.125 | .070 | * | Carbon Matrix | N/A | N/A | FX-23-52X70 | N/A | N/A |

Torque Converter Rings

GM Various

| ALTO | ID (in) | OD (in) | OAT | * | Material | Ray | BW | Tri | Sonnax | Abco |
|---------|---------|---------|------|---|---------------|-----|-----|-------------|--------|------|
| T2104K1 | 9.906 | 12.344 | .045 | * | Green | N/A | N/A | SX-23-40 | N/A | N/A |
| T2104CF | 9.906 | 12.344 | .045 | * | Carbon | N/A | N/A | SX-23-40 | N/A | N/A |
| T2104CM | 9.906 | 12.344 | .045 | * | Carbon Matrix | N/A | N/A | SX-23-40 | N/A | N/A |
| T2107K1 | 9.906 | 12.344 | .070 | * | Green | N/A | N/A | SX-23-40X70 | N/A | N/A |
| T2107CF | 9.906 | 12.344 | .070 | * | Carbon | N/A | N/A | SX-23-40X70 | N/A | N/A |
| T2107CM | 9.906 | 12.344 | .070 | * | Carbon Matrix | N/A | N/A | SX-23-40X70 | N/A | N/A |

GM 298mm, 300mm

| ALTO | ID (in) | OD (in) | OAT | * | Material | Ray | BW | Tri | Sonnax | Abco |
|---------|---------|---------|------|---|---------------|---------|--------|---------|--------|------|
| T1104K1 | 10.000 | 11.125 | .045 | | Green | R445250 | B45250 | SX-23-4 | GM-F-1 | 90A |
| T1104CF | 10.000 | 11.125 | .045 | | Carbon | R445250 | B45250 | SX-23-4 | GM-F-1 | 90A |
| T1104CM | 10.000 | 11.125 | .045 | | Carbon Matrix | R445250 | B45250 | SX-23-4 | GM-F-1 | 90A |
| T1107K1 | 10.000 | 11.125 | .070 | | Green | R475250 | B66250 | SX-23-4 | GM-F-1 | 56C |
| T1107CF | 10.000 | 11.125 | .070 | | Carbon | R475250 | B66250 | SX-23-4 | GM-F-1 | 56C |
| T1107CM | 10.000 | 11.125 | .070 | | Carbon Matrix | R475250 | B66250 | SX-23-4 | GM-F-1 | 56C |

AODE, 4R70W W/O Modulated Groove

| ALTO | ID (in) | OD (in) | OAT | * | Material | Ray | BW | Tri | Sonnax | Abco |
|---------|---------|---------|------|---|---------------|---------|--------|-----------|--------|------|
| T1184K1 | 10.000 | 11.250 | .045 | | Green | R445551 | B45551 | FX-23-28M | N/A | N/A |
| T1184CF | 10.000 | 11.250 | .045 | | Carbon | R445551 | B45551 | FX-23-28M | N/A | N/A |
| T1184CM | 10.000 | 11.250 | .045 | | Carbon Matrix | R445551 | B45551 | FX-23-28M | N/A | N/A |
| T1187K1 | 10.000 | 11.250 | .070 | | Green | R475551 | B66551 | SX-23-4 | GM-F-1 | 78D |
| T1187CF | 10.000 | 11.250 | .070 | | Carbon | R475551 | B66551 | SX-23-4 | GM-F-1 | 78D |
| T1187CM | 10.000 | 11.250 | .070 | | Carbon Matrix | R475551 | B66551 | SX-23-4 | GM-F-1 | 78D |

AODE, 4R70W W/ Modulated Groove

| ALTO | ID (in) | OD (in) | OAT | * | Material | Ray | BW | Tri | Sonnax | Abco |
|----------|---------|---------|------|---|---------------|---------|--------|-----------|--------|------|
| T1184K1G | 10.000 | 11.250 | .045 | | Green | R445551 | B45551 | FX-23-28M | N/A | N/A |
| T1184CFG | 10.000 | 11.250 | .045 | | Carbon | R445551 | B45551 | FX-23-28M | N/A | N/A |
| T1184CMG | 10.000 | 11.250 | .045 | | Carbon Matrix | R445551 | B45551 | FX-23-28M | N/A | N/A |
| T1187K1G | 10.000 | 11.250 | .070 | | Green | R475551 | B66551 | SX-23-4 | GM-F-1 | 78D |
| T1187CFG | 10.000 | 11.250 | .070 | | Carbon | R475551 | B66551 | SX-23-4 | GM-F-1 | 78D |
| T1187CMG | 10.000 | 11.250 | .070 | | Carbon Matrix | R475551 | B66551 | SX-23-4 | GM-F-1 | 78D |

E4OD, 1st Type

| ALTO | ID (in) | OD (in) | OAT | * | Material | Ray | BW | Tri | Sonnax | Abco |
|---------|---------|---------|------|---|---------------|-----|-----|-------------|--------|------|
| T2114K1 | 10.000 | 11.375 | .045 | * | Green | N/A | N/A | FX-23-27 | N/A | 90A |
| T2114CF | 10.000 | 11.375 | .045 | * | Carbon | N/A | N/A | FX-23-27 | N/A | 90A |
| T2114CM | 10.000 | 11.375 | .045 | * | Carbon Matrix | N/A | N/A | FX-23-27 | N/A | 90A |
| T2117K1 | 10.000 | 11.375 | .070 | * | Green | N/A | N/A | FX-23-27X70 | N/A | 90C |
| T2117CF | 10.000 | 11.375 | .070 | * | Carbon | N/A | N/A | FX-23-27X70 | N/A | 90C |
| T2117CM | 10.000 | 11.375 | .070 | * | Carbon Matrix | N/A | N/A | FX-23-27X70 | N/A | 90C |

E4OD

| ALTO | ID (in) | OD (in) | OAT | * | Material | Ray | BW | Tri | Sonnax | Abco |
|---------|---------|---------|------|---|---------------|---------|--------|-------------|---------|------|
| T1164K1 | 10.000 | 11.500 | .045 | | Green | R445010 | B45010 | FX-23-10 | N/A | N/A |
| T1164CF | 10.000 | 11.500 | .045 | | Carbon | R445010 | B45010 | FX-23-10 | N/A | N/A |
| T1164CM | 10.000 | 11.500 | .045 | | Carbon Matrix | R445010 | B45010 | FX-23-10 | N/A | N/A |
| T1167K1 | 10.000 | 11.500 | .070 | | Green | R475010 | B66010 | FX-23-10X70 | FD-F-12 | N/A |
| T1167CF | 10.000 | 11.500 | .070 | | Carbon | R475010 | B66010 | FX-23-10X70 | FD-F-12 | N/A |
| T1167CM | 10.000 | 11.500 | .070 | | Carbon Matrix | R475010 | B66010 | FX-23-10X70 | FD-F-12 | N/A |

Torque Converter Rings

MD/B 300/B 400

| ALTO | ID (in) | OD (in) | OAT | * | Material | Ray | BW | Tri | Sonnax | Abco |
|---------|---------|---------|------|---|---------------|---------|--------|-----|--------|------|
| T2124K1 | 10.000 | 11.570 | .045 | * | Green | R445400 | B45400 | N/A | N/A | N/A |
| T2124CF | 10.000 | 11.570 | .045 | * | Carbon | R445400 | B45400 | N/A | N/A | N/A |
| T2124CM | 10.000 | 11.570 | .045 | * | Carbon Matrix | R445400 | B45400 | N/A | N/A | N/A |
| T2127K1 | 10.000 | 11.570 | .070 | * | Green | R475400 | B66400 | N/A | N/A | N/A |
| T2127CF | 10.000 | 11.570 | .070 | * | Carbon | R475400 | B66400 | N/A | N/A | N/A |
| T2127CM | 10.000 | 11.570 | .070 | * | Carbon Matrix | R475400 | B66400 | N/A | N/A | N/A |

E4OD, 1st Type

| ALTO | ID (in) | OD (in) | OAT | * | Material | Ray | BW | Tri | Sonnax | Abco |
|---------|---------|---------|------|---|---------------|-----|-----|-------------|--------|------|
| T2134K1 | 10.000 | 11.625 | .045 | | Green | N/A | N/A | FX-23-12 | N/A | N/A |
| T2134CF | 10.000 | 11.625 | .045 | | Carbon | N/A | N/A | FX-23-12 | N/A | N/A |
| T2134CM | 10.000 | 11.625 | .045 | | Carbon Matrix | N/A | N/A | FX-23-12 | N/A | N/A |
| T2137K1 | 10.000 | 11.625 | .070 | | Green | N/A | N/A | FX-23-12X70 | N/A | N/A |
| T2137CF | 10.000 | 11.625 | .070 | | Carbon | N/A | N/A | FX-23-12X70 | N/A | N/A |
| T2137CM | 10.000 | 11.625 | .070 | | Carbon Matrix | N/A | N/A | FX-23-12X70 | N/A | N/A |

Allison 3060 (with 9 holes)

| ALTO | ID (in) | OD (in) | OAT | * | Material | Ray | BW | Tri | Sonnax | Abco |
|---------|---------|---------|------|---|---------------|-----|-----|------------|------------|------|
| T2144K1 | 10.000 | 11.688 | .045 | * | Green | N/A | N/A | MX-23-1 | MI-F-3060K | N/A |
| T2144CF | 10.000 | 11.688 | .045 | * | Carbon | N/A | N/A | MX-23-1 | MI-F-3060K | N/A |
| T2144CM | 10.000 | 11.688 | .045 | * | Carbon Matrix | N/A | N/A | MX-23-1 | MI-F-3060K | N/A |
| T2147K1 | 10.000 | 11.688 | .070 | * | Green | N/A | N/A | MX-23-1X70 | N/A | N/A |
| T2147CF | 10.000 | 11.688 | .070 | * | Carbon | N/A | N/A | MX-23-1X70 | N/A | N/A |
| T2147CM | 10.000 | 11.688 | .070 | * | Carbon Matrix | N/A | N/A | MX-23-1X70 | N/A | N/A |

Various

| ALTO | ID (in) | OD (in) | OAT | * | Material | Ray | BW | Tri | Sonnax | Abco |
|---------|---------|---------|------|---|---------------|---------|-----|-----|--------|------|
| T2154K1 | 10.000 | 11.735 | .045 | * | Green | R445611 | N/A | N/A | N/A | N/A |
| T2154CF | 10.000 | 11.735 | .045 | * | Carbon | R445611 | N/A | N/A | N/A | N/A |
| T2154CM | 10.000 | 11.735 | .045 | * | Carbon Matrix | R445611 | N/A | N/A | N/A | N/A |

Various

| ALTO | ID (in) | OD (in) | OAT | * | Material | Ray | BW | Tri | Sonnax | Abco |
|---------|---------|---------|------|---|---------------|-----|-----|-----|--------|------|
| T1224K1 | 10.125 | 12.250 | .045 | | Green | N/A | N/A | N/A | N/A | N/A |
| T1224CF | 10.125 | 12.250 | .045 | | Carbon | N/A | N/A | N/A | N/A | N/A |
| T1224CM | 10.125 | 12.250 | .045 | | Carbon Matrix | N/A | N/A | N/A | N/A | N/A |

Various

| ALTO | ID (in) | OD (in) | OAT | * | Material | Ray | BW | Tri | Sonnax | Abco |
|---------|---------|---------|------|---|---------------|---------|--------|-----|--------|------|
| T2164K1 | 10.200 | 11.800 | .045 | * | Green | R445510 | B45510 | N/A | N/A | N/A |
| T2164CF | 10.200 | 11.800 | .045 | * | Carbon | R445510 | B45510 | N/A | N/A | N/A |
| T2164CM | 10.200 | 11.800 | .045 | * | Carbon Matrix | R445510 | B45510 | N/A | N/A | N/A |
| T2167K1 | 10.200 | 11.800 | .070 | * | Green | R475510 | B66510 | N/A | N/A | N/A |
| T2167CF | 10.200 | 11.800 | .070 | * | Carbon | R475510 | B66510 | N/A | N/A | N/A |
| T2167CM | 10.200 | 11.800 | .070 | * | Carbon Matrix | R475510 | B66510 | N/A | N/A | N/A |

4L80E

| ALTO | ID (in) | OD (in) | OAT | * | Material | Ray | BW | Tri | Sonnax | Abco |
|---------|---------|---------|------|---|---------------|---------|--------|-------------|--------|------|
| T1124K1 | 10.250 | 11.500 | .045 | | Green | R445240 | B45240 | PX-23-11 | N/A | N/A |
| T1124CF | 10.250 | 11.500 | .045 | | Carbon | R445240 | B45240 | PX-23-11 | N/A | N/A |
| T1124CM | 10.250 | 11.500 | .045 | | Carbon Matrix | R445240 | B45240 | PX-23-11 | N/A | N/A |
| T1127K1 | 10.250 | 11.500 | .070 | | Green | R475240 | B66240 | PX-23-11X70 | N/A | N/A |
| T1127CF | 10.250 | 11.500 | .070 | | Carbon | R475240 | B66240 | PX-23-11X70 | N/A | N/A |
| T1127CM | 10.250 | 11.500 | .070 | | Carbon Matrix | R475240 | B66240 | PX-23-11X70 | N/A | N/A |

Torque Converter Rings

Allison 1000

| ALTO | ID (in) | OD (in) | OAT | * | Material | Ray | BW | Tri | Sonnax | Abco |
|---------|---------|---------|------|---|---------------|---------|--------|-------------|--------|------|
| T1314K1 | 10.250 | 12.340 | .045 | | Green | R445350 | B45350 | SX-23-44 | AL-F-5 | N/A |
| T1314CF | 10.250 | 12.340 | .045 | | Carbon | R445350 | B45350 | SX-23-44 | AL-F-5 | N/A |
| T1314CM | 10.250 | 12.340 | .045 | | Carbon Matrix | R445350 | B45350 | SX-23-44 | AL-F-5 | N/A |
| T1317K1 | 10.250 | 12.340 | .070 | | Green | R475350 | B66350 | SX-23-44X70 | AL-F-6 | N/A |
| T1317CF | 10.250 | 12.340 | .070 | | Carbon | R475350 | B66350 | SX-23-44X70 | AL-F-6 | N/A |
| T1317CM | 10.250 | 12.340 | .070 | | Carbon Matrix | R475350 | B66350 | SX-23-44X70 | AL-F-6 | N/A |

GM 310mm, 4L80E

| ALTO | ID (in) | OD (in) | OAT | * | Material | Ray | BW | Tri | Sonnax | Abco |
|---------|---------|---------|------|---|---------------|-----|-----|-------------|--------|------|
| T2174K1 | 10.313 | 11.563 | .045 | * | Green | N/A | N/A | SX-23-25 | GM-F-7 | 99 |
| T2174CF | 10.313 | 11.563 | .045 | * | Carbon | N/A | N/A | SX-23-25 | GM-F-7 | 99 |
| T2174CM | 10.313 | 11.563 | .045 | * | Carbon Matrix | N/A | N/A | SX-23-25 | GM-F-7 | 99 |
| T2177K1 | 10.313 | 11.563 | .070 | * | Green | N/A | N/A | SX-23-25X70 | GM-F-8 | 99A |
| T2177CF | 10.313 | 11.563 | .070 | * | Carbon | N/A | N/A | SX-23-25X70 | GM-F-8 | 99A |
| T2177CM | 10.313 | 11.563 | .070 | * | Carbon Matrix | N/A | N/A | SX-23-25X70 | GM-F-8 | 99A |

E4OD, 1st Type

| ALTO | ID (in) | OD (in) | OAT | * | Material | Ray | BW | Tri | Sonnax | Abco |
|---------|---------|---------|------|---|---------------|-----|-----|-------------|--------|------|
| T2184K1 | 10.375 | 11.188 | .045 | * | Green | N/A | N/A | FX-23-23 | N/A | N/A |
| T2184CF | 10.375 | 11.188 | .045 | * | Carbon | N/A | N/A | FX-23-23 | N/A | N/A |
| T2184CM | 10.375 | 11.188 | .045 | * | Carbon Matrix | N/A | N/A | FX-23-23 | N/A | N/A |
| T2187K1 | 10.375 | 11.188 | .070 | * | Green | N/A | N/A | FX-23-23X70 | N/A | N/A |
| T2187CF | 10.375 | 11.188 | .070 | * | Carbon | N/A | N/A | FX-23-23X70 | N/A | N/A |
| T2187CM | 10.375 | 11.188 | .070 | * | Carbon Matrix | N/A | N/A | FX-23-23X70 | N/A | N/A |

4L80E, HD, B500

| ALTO | ID (in) | OD (in) | OAT | * | Material | Ray | BW | Tri | Sonnax | Abco |
|---------|---------|---------|------|---|---------------|---------|--------|-------------|--------|------|
| T2194K1 | 10.375 | 11.625 | .045 | * | Green | R445084 | B45084 | SX-23-47 | N/A | N/A |
| T2194CF | 10.375 | 11.625 | .045 | * | Carbon | R445084 | B45084 | SX-23-47 | N/A | N/A |
| T2194CM | 10.375 | 11.625 | .045 | * | Carbon Matrix | R445084 | B45084 | SX-23-47 | N/A | N/A |
| T2197K1 | 10.375 | 11.625 | .070 | * | Green | R475084 | B66084 | SX-23-47X70 | N/A | N/A |
| T2197CF | 10.375 | 11.625 | .070 | * | Carbon | R475084 | B66084 | SX-23-47X70 | N/A | N/A |
| T2197CM | 10.375 | 11.625 | .070 | * | Carbon Matrix | R475084 | B66084 | SX-23-47X70 | N/A | N/A |

Chrysler 310mm, A618

| ALTO | ID (in) | OD (in) | OAT | * | Material | Ray | BW | Tri | Sonnax | Abco |
|---------|---------|---------|------|---|---------------|-----|-----|-------------|--------|------|
| T2204K1 | 10.375 | 13.000 | .045 | * | Green | N/A | N/A | SX-23-38 | N/A | N/A |
| T2204CF | 10.375 | 13.000 | .045 | * | Carbon | N/A | N/A | SX-23-38 | N/A | N/A |
| T2204CM | 10.375 | 13.000 | .045 | * | Carbon Matrix | N/A | N/A | SX-23-38 | N/A | N/A |
| T2207K1 | 10.375 | 13.000 | .070 | * | Green | N/A | N/A | SX-23-38X70 | N/A | N/A |
| T2207CF | 10.375 | 13.000 | .070 | * | Carbon | N/A | N/A | SX-23-38X70 | N/A | N/A |
| T2207CM | 10.375 | 13.000 | .070 | * | Carbon Matrix | N/A | N/A | SX-23-38X70 | N/A | N/A |

Various

| ALTO | ID (in) | OD (in) | OAT | * | Material | Ray | BW | Tri | Sonnax | Abco |
|---------|---------|---------|------|---|---------------|---------|--------|-----|--------|------|
| T2274K1 | 10.470 | 11.650 | .045 | * | Green | R445710 | B45710 | N/A | N/A | N/A |
| T2274CF | 10.470 | 11.650 | .045 | * | Carbon | R445710 | B45710 | N/A | N/A | N/A |
| T2274CM | 10.470 | 11.650 | .045 | * | Carbon Matrix | R445710 | B45710 | N/A | N/A | N/A |

Torque Converter Rings

Chrysler 310mm, A618

| ALTO | ID (in) | OD (in) | OAT | * | Material | Ray | BW | Tri | Sonnax | Abco |
|---------|---------|---------|------|---|---------------|-----|-----|-------------|---------|------|
| T2214K1 | 10.688 | 12.625 | .045 | * | Green | N/A | N/A | SX-23-35 | GM-F-10 | 104 |
| T2214CF | 10.688 | 12.625 | .045 | * | Carbon | N/A | N/A | SX-23-35 | GM-F-10 | 104 |
| T2214CM | 10.688 | 12.625 | .045 | * | Carbon Matrix | N/A | N/A | SX-23-35 | GM-F-10 | 104 |
| T2217K1 | 10.688 | 12.625 | .070 | * | Green | N/A | N/A | SX-23-35X70 | GM-F-12 | 104A |
| T2217CF | 10.688 | 12.625 | .070 | * | Carbon | N/A | N/A | SX-23-35X70 | GM-F-12 | 104A |
| T2217CM | 10.688 | 12.625 | .070 | * | Carbon Matrix | N/A | N/A | SX-23-35X70 | GM-F-12 | 104A |

A618

| ALTO | ID (in) | OD (in) | OAT | * | Material | Ray | BW | Tri | Sonnax | Abco |
|---------|---------|---------|------|---|---------------|---------|--------|-------------|---------|------|
| T1134K1 | 10.750 | 12.500 | .045 | | Green | R445230 | B45230 | SX-23-35 | GM-F-10 | 104 |
| T1134CF | 10.750 | 12.500 | .045 | | Carbon | R445230 | B45230 | SX-23-35 | GM-F-10 | 104 |
| T1134CM | 10.750 | 12.500 | .045 | | Carbon Matrix | R445230 | B45230 | SX-23-35 | GM-F-10 | 104 |
| T1137K1 | 10.750 | 12.500 | .070 | | Green | R475230 | B66230 | SX-23-35X70 | GM-F-12 | 104A |
| T1137CF | 10.750 | 12.500 | .070 | | Carbon | R475230 | B66230 | SX-23-35X70 | GM-F-12 | 104A |
| T1137CM | 10.750 | 12.500 | .070 | | Carbon Matrix | R475230 | B66230 | SX-23-35X70 | GM-F-12 | 104A |

Allison B500

| ALTO | ID (in) | OD (in) | OAT | * | Material | Ray | BW | Tri | Sonnax | Abco |
|---------|---------|---------|------|---|---------------|---------|--------|-------------|--------|------|
| T2224K1 | 11.530 | 13.575 | .045 | * | Green | R445601 | B45601 | SX-23-46 | N/A | N/A |
| T2224CF | 11.530 | 13.575 | .045 | * | Carbon | R445601 | B45601 | SX-23-46 | N/A | N/A |
| T2224CM | 11.530 | 13.575 | .045 | * | Carbon Matrix | R445601 | B45601 | SX-23-46 | N/A | N/A |
| T2227K1 | 11.530 | 13.575 | .070 | * | Green | R475601 | B66601 | SX-23-46X70 | N/A | N/A |
| T2227CF | 11.530 | 13.575 | .070 | * | Carbon | R475601 | B66601 | SX-23-46X70 | N/A | N/A |
| T2227CM | 11.530 | 13.575 | .070 | * | Carbon Matrix | R475601 | B66601 | SX-23-46X70 | N/A | N/A |

Torque Converter Floater Rings

L3N71B Floater

| ALTO | ID (in) | OD (in) | OAT Material | Ray | BW | Tri | Sonnax | Abco |
|------|---------|---------|--------------|-----|-----|---------|--------|------|
| TBA | 7.219 | 9.125 | .070 Green | N/A | N/A | JX-23-2 | N/A | N/A |

RL3F01A Floater

| ALTO | ID (in) | OD (in) | OAT Material | Ray | BW | Tri | Sonnax | Abco |
|------|---------|---------|--------------|-----|-----|---------|--------|------|
| TBA | 7.531 | 9.750 | .070 Green | N/A | N/A | JX-23-9 | N/A | N/A |

KM175/177 Floater

| ALTO | ID (in) | OD (in) | OAT Material | Ray | BW | Tri | Sonnax | Abco |
|------|---------|---------|--------------|-----|-----|---------|--------|------|
| TBA | 7.875 | 9.250 | .070 Green | N/A | N/A | TX-26-7 | N/A | N/A |

GM 245mm Floater

| ALTO | ID (in) | OD (in) | OAT Material | Ray | BW | Tri | Sonnax | Abco |
|------|---------|---------|--------------|-----|-----|----------|--------|------|
| TBA | 8.000 | 9.500 | .070 Green | N/A | N/A | SX-23-14 | N/A | N/A |

L4N71B Floater

| ALTO | ID (in) | OD (in) | OAT Material | Ray | BW | Tri | Sonnax | Abco |
|------|---------|---------|--------------|-----|-----|---------|--------|------|
| TBA | 8.000 | 9.625 | .070 Green | N/A | N/A | JX-23-4 | N/A | N/A |

Chrysler 9 1/2 Floater

| ALTO | ID (in) | OD (in) | OAT Material | Ray | BW | Tri | Sonnax | Abco |
|------|---------|---------|--------------|-----|-----|---------|--------|------|
| TBA | 8.000 | 9.625 | .070 Green | N/A | N/A | TX-26-9 | N/A | 75 |

A4LD Floater

| ALTO | ID (in) | OD (in) | OAT Material | Ray | BW | Tri | Sonnax | Abco |
|------|---------|---------|--------------|-----|-----|---------|--------|------|
| TBA | 8.125 | 10.250 | .070 Green | N/A | N/A | FX-23-3 | N/A | N/A |

Jatco 9.375 Floater

| ALTO | ID (in) | OD (in) | OAT Material | Ray | BW | Tri | Sonnax | Abco |
|------|---------|---------|--------------|-----|-----|----------|--------|------|
| TBA | 8.313 | 10.344 | .070 Green | N/A | N/A | JX-23-12 | N/A | N/A |

Chry 10 LU - Floater

| ALTO | ID (in) | OD (in) | OAT * Material | Ray | BW | Tri | Sonnax | Abco |
|----------|---------|---------|----------------------|---------|-----|-------------|--------|------|
| T1427K1X | 8.800 | 10.300 | .070 * Green | R460000 | N/A | TX-26-11X70 | N/A | 98-A |
| T1427CFX | 8.800 | 10.300 | .070 * Carbon | R460000 | N/A | TX-26-11X70 | N/A | 98-A |
| T1427CMX | 8.800 | 10.300 | .070 * Carbon Matrix | R460000 | N/A | TX-26-11X70 | N/A | 98-A |

Chrysler 10 3/4 Floater

| ALTO | ID (in) | OD (in) | OAT Material | Ray | BW | Tri | Sonnax | Abco |
|------|---------|---------|--------------|-----|-----|---------|--------|------|
| TBA | 9.250 | 10.750 | .070 Green | N/A | N/A | TX-26-4 | N/A | 55C |

GM 298mm Floater

| ALTO | ID (in) | OD (in) | OAT Material | Ray | BW | Tri | Sonnax | Abco |
|------|---------|---------|--------------|-----|-----|----------|--------|------|
| TBA | 9.500 | 11.656 | .070 Green | N/A | N/A | SX-23-11 | N/A | N/A |

Torque Converter Sheets

24" X 24" SHEETS : COATED .045"

| ALTO | OAT Material | Ray | BW | Tri | Sonnax | Abco |
|-----------|--------------------|-----|-----|-----|--------|------|
| RP45X24K1 | .045 Green | N/A | N/A | N/A | N/A | N/A |
| RP45X24RD | .045 Red | N/A | N/A | N/A | N/A | N/A |
| RP45X24CF | .045 Carbon | N/A | N/A | N/A | N/A | N/A |
| RP45X24CM | .045 Carbon Matrix | N/A | N/A | N/A | N/A | N/A |

24" X 24" SHEETS : UNCOATED .045"

| ALTO | OAT Material | Ray | BW | Tri | Sonnax | Abco |
|------------|--------------------|-----|-----|-----|--------|------|
| RP45X24K1X | .045 Green | N/A | N/A | N/A | N/A | N/A |
| RP45X24RDX | .045 Red | N/A | N/A | N/A | N/A | N/A |
| RP45X24CFX | .045 Carbon | N/A | N/A | N/A | N/A | N/A |
| RP45X24CMX | .045 Carbon Matrix | N/A | N/A | N/A | N/A | N/A |

24" X 24" SHEETS : COATED .070"

| ALTO | OAT Material | Ray | BW | Tri | Sonnax | Abco |
|-----------|--------------------|-----|-----|-----|--------|------|
| RP70X24K1 | .070 Green | N/A | N/A | N/A | N/A | N/A |
| RP70X24RD | .070 Red | N/A | N/A | N/A | N/A | N/A |
| RP70X24CF | .070 Carbon | N/A | N/A | N/A | N/A | N/A |
| RP70X24CM | .070 Carbon Matrix | N/A | N/A | N/A | N/A | N/A |

24" X 24" SHEETS : UNCOATED .070"

| ALTO | OAT Material | Ray | BW | Tri | Sonnax | Abco |
|------------|--------------------|-----|-----|-----|--------|------|
| RP70X24K1X | .070 Green | N/A | N/A | N/A | N/A | N/A |
| RP70X24RDX | .070 Red | N/A | N/A | N/A | N/A | N/A |
| RP70X24CFX | .070 Carbon | N/A | N/A | N/A | N/A | N/A |
| RP70X24CMX | .070 Carbon Matrix | N/A | N/A | N/A | N/A | N/A |



TORQUE CONVERTER

| ALTO# | REF# | DESCRIPTION | OAT | QTY | NOTES |
|---------------------------------------|-----------|--|------------|-----|------------------------------|
| GENERAL MOTORS | | | | | |
| 6T40/6T45 | | | | | |
| 129320 | BW-SP-5 | SPRAG, TORQUE CONVERTER 236mm 04+ | | 1 | 22 ELEMENT |
| 6L45E | | | | | |
| 201714 | NA | FR GM 6L45E TORQ CONV 210MM | .138/3.51 | 1 | Heg - 24T - ID: 8.700" |
| CHRYSLER | | | | | |
| 68RFE | | | | | |
| 128714 | CH-CP-1 | FR CHRYSLER 68RFE 07+ | 0.16/4.06 | 4 | Heg - 35T - ID: 10.150" |
| AS68RC | | | | | |
| 202759 | NA | FR/ST PACK AS68RC 3500 TRUCK 07+ Includes Friction, Steel, PP | | 1 | |
| 202714 | AS-CP-1FK | FR AS68RC 3500 TRUCK 07+ | .100/2.54 | 3 | Red - 36T - OD: 7.438" - SPR |
| 202715 | AS-CP-2SK | ST AS68RC 3500 TRUCK 07+ | .071/1.80 | 3 | 16T - ID: 6.254" |
| 202760 | NL | ST AS68RC 3500 TRUCK 07+ | .249/6.32 | 1 | 16T - ID: 6.254" |
| AS69RC | | | | | |
| 202716 | NA | FR AS69RC 14+ | .100/2.54 | 3 | Heg - 42T - OD: 8.550" - SPR |
| 202717 | NA | ST AS69RC 14+ | 0.071/1.80 | 3 | 16T - ID: 7.340" |
| AISIN | | | | | |
| A581 | | | | | |
| 168712-315 | NA | FR A581 TORQ CONV 01+ | 0.124/3.14 | 1 | Heg - 50T - OD: 9.800" |
| AW 55-50SN | | | | | |
| 159320 | BW-SP-3 | SPRAG TORQUE CONVERTER 23 ELEMENT | | 1 | |
| AW TF-60SN | | | | | |
| 129320 | BW-SP-5 | SPRAG, TORQUE SONVERTER 236mm 04+ | | 1 | 22 ELEMENT |
| A40045TCU25 | VW-O-3 | SEALING RING TORQ CONV AW TF-60SN 1.561 X 1.373 X .090" | .090/2.30 | 1 | TEFLON, SCARF CUT |
| TF-80SC | | | | | |
| 197320 | BW-SP-2 | SPRAG, TORQUE CONVERTER 05+ | | 1 | 24 ELEMENT |
| TF-80SD | | | | | |
| 197320 | BW-SP-2 | SPRAG, TORQUE CONVERTER 05+ | | 1 | 24 ELEMENT |
| AW 450-43LE | | | | | |
| 153320 | NA | SPRAG, TORQUE CONVERTER 98+ | | 1 | |
| ALLISON | | | | | |
| MT640, 643, 644, 650, 653, 654 | | | | | |
| 055055 | 23016564 | Lathe Cut, Lockup clutch backing plate 72+ | | 1 | |
| 056301 | 6770845 | Piston, Lockup clutch TORQUE CONV 72+ | | 1 | |
| 056835 | NA | SEAL KIT MT643 TORQUE CONV 72+ | | 1 | contains 5 seals |
| FORD | | | | | |
| 6R80 | | | | | |
| 183718A | NA | FR 6R80 TORQUE CONVERTER EXT 07+ | .167/4.24 | 1 | G3C- 40T - ID: 8.706" |



TORQUE CONVERTER

| ALTO# | REF# | DESCRIPTION | OAT | QTY | NOTES |
|--------------------------------------|--------------|---|-----------|-----|------------------------------|
| HONDA | | | | | |
| MT4A | | | | | |
| 129320 | BW-SP-5 | SPRAG, TORQUE SONVERTER 236mm 04+ | | 1 | 22 ELEMENT |
| 172715 | HO-CP-2 | ST HONDA MT4A TORQUE CONVERTER | .047/1.19 | 1 | 36T - ID: 7.173" |
| HYUNDAI/KIA | | | | | |
| A5HF1 | | | | | |
| 197320 | BW-SP-2 | SPRAG, TORQUE CONVERTER 05+ | | 1 | 24 ELEMENT |
| MERCEDES | | | | | |
| 722.6/ 722.9 Early Generation | | | | | |
| 141714 | MB-CP-7BW | FR 722.6 TORQUE CONVERTER SEL. 96+ | .107/2.70 | 1-2 | Red - 34T - OD: 6.929" - SB |
| 141714X | MB-CP-7BW | FR 722.6 TORQUE CONVERTER 96+ | .107/2.70 | 1-2 | Red - 34T - OD: 6.929" - SB |
| 141714X232 | MB-CP-5 | FR 722.6 TORQUE CONVERTER SEL. 96+ | .091/2.32 | AR | Red - 34T - OD: 6.929" - SB |
| 141714-200 | NA | FR 722.6 TORQ CONV PPK 96+ | .078/1.98 | 1-2 | Red - 34T - OD: 6.929" - SB |
| 141714-232 | MB-CP-5 | FR 722.6 TORQUE CONVERTER SEL. 96+ | .091/2.32 | 1-2 | Red - 34T - OD: 6.929" - SB |
| 141715-177 | MB-CP-3KR | ST 722.6 TORQUE CONVERTER 96+ | .069/1.75 | AR | 20T - ID: 5.629" |
| 141715AK177 | NA | ST 722.6 TORQUE CONVERTER PPK 96+ | .069/1.75 | 3 | 20T - ID: 5.629" |
| 141715-390 | MB-CP-4K | ST 722.6 TORQUE CONVERTER 96+ | .155/3.95 | AR | 20T - ID: 5.629" |
| 141715-497 | NA | ST 722.6 TORQUE CONVERTER 96+ | .196/4.97 | AR | 20T - ID: 5.629" |
| 141758 | MB-CP-272KBW | KIT 722.6 TORQ CONV 272MM Includes 2 Frictions, 3 Steels, and Ring/Seal Kit 96+ | | 1 | |
| 141758A | NA | KIT 722.6 TORQ CONV 290MM Includes 2 Frictions, 3 Steels, and Ring/Seal Kit 96+ | | 1 | |
| 141759 | NA | KIT 722.6 TORQ CONV PPK Includes 3 Frictions, 4 Steels, Snapping, and Ring/Seal Kit 96+ | | 1 | |
| 722.7 | | | | | |
| 147714 | NA | FR 722.7 TORQUE CONV 30 SQUARE TOOTH 98+ | .106/2.69 | AR | Heg - 30T - ID: 6.930" - SB |
| 147714A | NA | FR 722.7 TORQUE CONV SQUARE TOOTH 2.79MM | .110/2.79 | AR | Heg - 30T - ID: 6.930" - SB |
| 722.9 Late Generation | | | | | |
| 141718A | MB-CP-8 | FR 722.9 TORQUE CONVERTER | .109/2.77 | 2 | Heg - 40T - ID: 6.104" - SB |
| 141719A | MB-CP-15S | ST 722.9 TORQUE CONVERTER | .078/1.98 | 3 | 36T - OD: 7.400" |
| 141719A180 | MB-CP-14S | ST 722.9 TORQUE CONVERTER | .071/1.80 | 3 | 36T - OD: 7.400" |
| RENAULT | | | | | |
| DPO/AL4 | | | | | |
| 155325 | RE-SP-1 | SPRAG, TORQUE CONVERTER 97+ | | 1 | |
| 155714 | NA | FR DPO/AL-4 TORQUE CONVERTER 97+ | .139/3.53 | AR | Red - 24T - ID: 6.64" - SM |
| 155716 | RE-CP-2 | FR DPO/AL-4 TORQUE CONVERTER 05+ | .159/4.04 | AR | Red - 24T - OD: 8.750" |
| 155718 | NA | FR DPO/AL-4 TORQUE CONVERTER 05+ | .106/2.69 | 1 | Red - 40T - ID: 7.361" - CUP |
| NISSAN | | | | | |
| RE5R05A | | | | | |
| 174759 | NA | RE5R05A TORQ CONV REPAIR KIT Includes Friction, Steel, PP and Ring/Seal Kit 02+ | | | |
| 174712-188 | JA-CP-1 | FR RE5R05A TORQUE CONV 02+ | .074/1.88 | 3 | Heg - 40T - OD: 6.474" - SB |



TORQUE CONVERTER

| ALTO# | REF# | DESCRIPTION | OAT | QTY | NOTES |
|-------------------------|------------|---|-----------|-----|----------------------------------|
| NISSAN continued | | | | | |
| 174713-178 | JA-CP-2 | ST RE5R05A TORQUE CONV 02+ | .070/1.78 | 4 | 36T - ID: 5.610" |
| 174762 | NA | ST RE5R05A TORQUE CONV PP 02+ | .258/6.55 | 1 | 35T - ID: 5.607" |
| 174835 | NA | RE5R05A RING AND SEAL KIT | | | |
| RE7R01A | | | | | |
| 174759A | NA | RE7R01A TORQ CONV REPAIR KIT Includes Friction, Steel, and PP 09+ | | 1 | |
| 174722-180 | JA-CP-4 | FR RE7R01A TC 09+ | .071/1.80 | 3 | Heg - 24T - OD: 6.825" |
| 174723-180 | NA | ST RE7R01A TC 09+ | .071/1.80 | 3 | 30T - ID: 5.607" |
| 174762A | NA | ST RE7R01A TC PP 09+ | | 1 | 30T - ID: 5.609" |
| TOYOTA | | | | | |
| AB60E/F | | | | | |
| A40045TCU25 | VW-O-3 | SEALING RING TORQ CONV TOY AB60E/F 1.561 X 1.373 X .090" | .090/2.30 | 1 | TEFLON, SCARF CUT |
| VOLKSWAGEN | | | | | |
| TR60-SN | | | | | |
| 185714-262 | NA | FR TR60-SN TORQ CONV 04+ | .103/2.62 | 1 | TAN- 30T - OD: 7.033" |
| 185715-235 | NA | ST TR60-SN TORQ CONV 04+ | .092/2.34 | 1 | 48T - ID: 5.862" |
| 185716 | AW-CP-6F | FR TR60-SN TORQ CONV 04+ | .147/3.73 | 2 | |
| 185717-320 | AW-CP-4S | ST TR60-SN TC .126" 04+ | .126/3.20 | 1 | 20T - ID: 8.760" |
| TR60-SN | | | | | |
| 185717-500 | AW-CP-5PX | ST TR60-SN TC .197" 04+ | .197/5.00 | 1 | 20T - ID: 8.760" |
| 185765-380 | NA | ST TR60-SN TORQ CONV PP 04+ | .150/3.81 | 1 | 48T - ID: 5.862" |
| TR80-SD | | | | | |
| 222714-361 | DW-OC8-D-G | FR TR80-SD TORQ CONV - GZ TYPE | .142/3.61 | 1 | HEG- 30T - ID: 4.325" |
| 222716-365 | DW-OC8-D-Z | FR TR80-SD TORQ CONV - DZ TYPE | .144/3.65 | 1 | HEG - 36T - OD: 10.212" |
| 222715-203 | DW-OC8-D-G | ST TR80-SD TORQ CONV - GZ TYPE | .080/2.03 | 1 | 24T - OD: 6.014" |
| 222717-325 | DW-OC8-D-Z | ST TR80-SD TORQ CONV - DZ TYPE | .127/3.25 | 1 | 20T - ID: 8.762" |
| 222717-500 | DW-OC8-D-Z | ST TR80-SD TORQ CONV - DZ TYPE | .197/5.00 | 1 | 20T - ID: 8.762" |
| ZF | | | | | |
| 4HP24 | | | | | |
| 183320 | BW-SP-4 | Sprag, Torque Converter 83+ Captive Clutch, Single Friction | | 1 | 18 ELEMENT |
| 5HP19 | | | | | |
| 139714 | FS-CP-2 | FR ZF5HP19 TORQUE CONVERTER 95+ | .122/3.10 | AR | Red - 24T - ID: 8.153" - grooved |
| 139714A | NA | FR ZF5HP19 TORQUE CONVERTER 95+ | .122/3.1 | AR | HEG- 24T - ID: 8.379" |
| 139714A350 | FS-CP-2TKR | FR ZF5HP19 TORQUE CONVERTER 95+ | .138/3.5 | AR | HEG- 24T - ID: 8.379" |
| 183320 | BW-SP-4 | Sprag, Torque Converter | | 1 | 18 ELEMENT |
| 5HP24 | | | | | |
| 132714 | FS-CP-3 | FR ZF5HP24 TORQUE CONVERTER 95+ | .120/3.04 | AR | Tan - 24T - ID: 8.379" - SM |
| 132714A | FS-CP-3 | FR ZF5HP24 TORQUE CONVERTER 95+ | .120/3.04 | AR | Red - 24T - ID: 8.379" - SM |
| 132714-386 | FS-CP-3 | FR ZF5HP24 TORQUE CONVERTER 95+ | .120/3.86 | AR | Tan - 24T - ID: 8.379" - SM |
| 5HP30 | | | | | |
| 113714 | FS-CP-1 | FR ZF5HP30 TORQUE CONVERTER 93+ | .118/3.00 | AR | Red - 24T - OD: 9.354" - SM |
| 113714-450 | FS-CP-4C | FR ZF5HP30 TORQUE CONVERTER 93+ | .177/4.50 | AR | Red - 24T - OD: 9.354" - SM |
| 113714C300 | FS-CP-1C | FR ZF5HP30 TORQUE CONVERTER 93+ | .118/3.00 | AR | Carbon - 24T - OD: 9.354" - SM |



TORQUE CONVERTER

| ALTO# | REF# | DESCRIPTION | OAT | QTY | NOTES |
|---------------------|--------------------------|---|-------------|-----|--|
| ZF continued | | | | | |
| 6HP19 | | | | | |
| 183320 | BW-SP-4 | Sprag, Torque Converter 83+ (245mm and 255mm) | | 1 | 18 ELEMENT |
| 183715 | ZF-CP-7 | ST Z6HP19 TORQUE CONVERTER 02+ | .108/2.74 | 1 | 24T - OD: 7.570" - grooved |
| 143714 | FS-CP-7BW | FR ZF6HP19 TORQ CONV 245MM 04+ | .157/3.99 | 1 | Heg - 24T - ID: 7.874" with cutouts |
| 143716 | ZF-ZP-13 | FR ZF6HP19 TORQ CONV 245MM | .140/3.56 | 1 | Heg - 24T - ID: 8.350" - spiral |
| 6HP26 | | | | | |
| 183320 | BW-SP-4 | Sprag, Torque Converter 83+ (280mm) | | 1 | 18 ELEMENT |
| 183714 | FS-CP-56BW | FR ZF6HP26 TORQ CONV 260MM 02+ | .160/4.06 | 1 | Aramid - 24T - ID: 8.200" with cutouts |
| 183714A | ZF-CP-6 | FR ZF6HP26 TORQ CONV 280MM 02+ | .160/4.06 | 1 | Aramid - 24T - ID: 8.725" with cutouts |
| 183715 | ZF-CP-7 | ST ZF6HP19/26 TORQ CONV 255MM 02+ | .108/2.74 | 1 | 24T - OD: 7.570" - grooved |
| 183716 | ZF-CP-4 | FR ZF6HP19/26 TORQ CONV 255MM 02+ | .140/3.56 | 2 | Heg - 24T - ID: 6.300" with cutouts |
| 183720 | ZF-CP-5 | ZF6HP26 TORQ CONV 275MM 02+ | .106/2.69 | 1 | Heg - 20T - ID: 7.283" with cutouts |
| 183722 | ZF-CP-2 | ZF6HP26/28 TORQ CONV 280MM 02+ | .160/4.06 | 1 | Heg - 24T - ID: 8.782" with bent tooth |
| 183724 | ZF-CP-1 | ZF6HP26 TORQ CONV 255MM 02+ | .145/3.68 | 1 | Heg - 24T - ID: 6.300" |
| 6HP28 | | | | | |
| TBA | NA | ZF6HP28 TORQ CONV (BMW 750/760) 05+ | .157/3.99 | 1 | Heg - 24T - ID: 8.779" with cutouts |
| 183320 | BW-SP-4 | Sprag, Torque Converter 83+ | | 1 | 18 ELEMENT |
| 183722 | ZF-CP-2 | ZF6HP26/28 TORQ CONV 280MM | .160/4.06 | 1 | Heg - 24T - ID: 8.782" with bent tooth |
| 8HP45 | | | | | |
| 215614 | NA | SEAL KIT ZF8HP45 TORQUE CONVERTER INNER/OUTER | | 1 | (Contains 1-A50030 Small, 1-A20027B Large) |
| A20027B | NA | ZF8HP45 MOLDED RUBBER OUTER TORQ CONV SEAL "D" RING - Large | | 1 | 188.42 X 197.3 X 1.83 |
| A50030 | NA | ZF8HP45 MOLDED RUBBER INNER TORQ CONV SEAL Small | | 1 | 102mm ID |
| 215714 | ZF-CP-8F | ZF8HP45 TORQUE CONVERTER 11+ SEG | 0.096/2.44 | 1 | GRY- 80T - OD: 7.766 SEG |
| 215715-175 | ZF-CP-9SX | ZF8HP45 TORQUE CONVERTER 11+ | .069/1.75 | 1 | 30T - ID: 6.498" |
| 215715-277 | ZF-CP-10SX | ZF8HP45 TORQUE CONVERTER 11+ | .109/2.77 | 1 | 30T - ID: 6.498" |
| 215765 | ZF-CP-11SX | ZF8HP45 TORQUE CONVERTER PP 11+ | .168/4.27 | 1 | 30T - ID: 6.498" |
| ECOMAT | | | | | |
| 121705A200 | 4139-373-029 | ST ZF5HP500 F PACK WIDER TOOTH NO HOLES 90+ | .079 / 2.00 | AR | 24T - ID: 9.320" |
| 121706 | 4166-238-037 | FR TORQUE CONV HEG SB Except 6HP600, 5HP590 90+ | .118 / 3.00 | 2 | Grn - 18T - OD: 12.930" - SM |
| 121706A320 | NA | FR TORQUE CONV HEG 90+ (6HP600) | .124 / 3.15 | 2 | Heg - 36T - OD: 15.398" - PL |
| 121706C310 | 4166-236-134 | FR W360 TORQUE CONV | .122 / 3.10 | AR | Heg - 59T - OD: 12.96" |
| 121706D310 | 0501-212-249 | FR TORQUE CONV 90+ | .123 / 3.12 | 1 | 66T - OD: 15.009" |
| 121707 | 4139-334-004 | ST TORQUE CONV 90+ Except 6HP600 | .079 / 2.00 | AR | 12T - ID: 11.887" |
| 121707-300 | NA | ST TORQUE CONV 90+ Except 6HP600 | .118 / 3.00 | AR | 12T - ID: 11.887" |
| 121707-350 | 4139-334-006 | ST TORQUE CONV 90+ Except 6HP600 | .138 / 3.50 | AR | 12T - ID: 11.887" |
| 121707-400 | 4139-334-005 | ST W360 TORQUE CONV 90+ | .157 / 3.99 | AR | 12T - ID: 11.887" |
| 121707A250 | NA | ST TORQUE CONV 90+ 6HP600 | .098 / 2.50 | 2 | 36T - ID: 14.313" |
| 121707A300 | 4166-338-202 | ST TORQUE CONV 90+ 6HP600 | .118 / 3.00 | 1 | 36T - ID: 14.313" |
| 121707B400 | 0501-320-306 | ST TORQUE CONV 12 TEETH 90+ | .157 / 4.00 | AR | 12T - ID: 11.800" |
| 121707D405 | 0501-318-589 | ST TORQUE CONV 90+ | .159 / 4.04 | 1 | 8T - ID: 13.224" |
| 121716-305 | 0501-213-150 | FR 5HP590 TORQ CONV 59T 90+ | .079 / 2.00 | 6-8 | Heg - 59T - OD: 13.365" - PLNI |
| VOITH | | | | | |
| 125714 | 58.2250.13 58.2250.12 | FR TORQUE CONVERTER | .138/3.50 | 3 | Brz - 63T - OD: 12.51" - Sprl |
| 125715 | 50.9743.13 | ST TORQUE CONVERTER | .098/2.50 | 4 | 12T - ID: 10.429" |