



Chrysler A-604/A-606 Case Saver®

ALTO PART #077758

Alto # 077758 CASE SAVER® KIT CONTENTS:

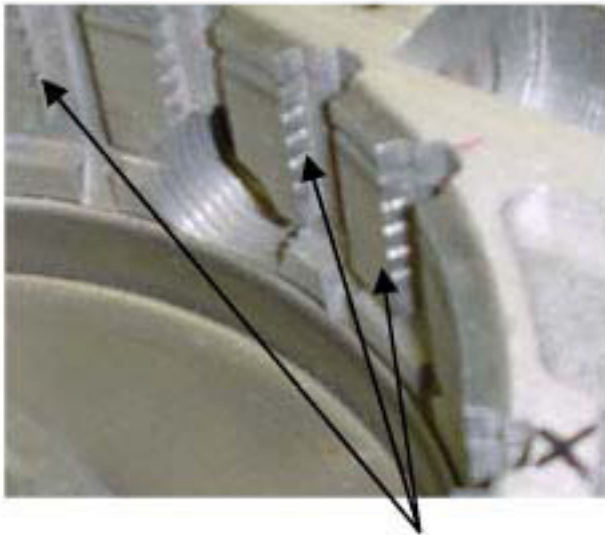
077758

- (13) 077300 Case Saver® Clips
- (5) 077714 (.072" / 1.83mm) Low/Rev Kevlar® Friction Plates
- (5) 077705A173 (.068" / 1.73mm) Low/Rev Steel Plates
- (1) 077254 Low/Rev Snap Ring

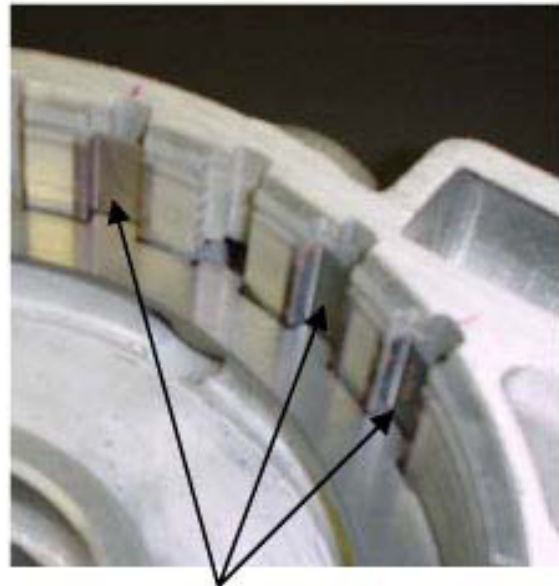
INSTALLATION INSTRUCTIONS

Remove any aluminum flashing that has been forced into the case cavity by the low reverse clutch steel plates. Use a burr knife or equivalent tool to remove any loose particles of aluminum from the steel plate lug grooves.

Start the installation with the low reverse apply piston removed from the case cavity. Install all 13 Case Saver® clips into the case, with the small tab facing down. Install the apply piston in the normal manner, stack-up of the low reverse clutch pack is the same method as OE. Start with a steel plate and end with the pressure plate and then the snap ring.



Note damaged area



Inserts installed

Clutch pack clearance is .030" to .104" (0.76 to 2.64mm). Check using a dial indicator and adjust by using selective reaction plates.

Only the Alto steel plates provided in this kit will work with these Case Saver® inserts.