



New Product Announcement

MAKE: Hyundai, Kia

TRANSMISSION: A5HF1, A6GF1, A6LF1/2/3

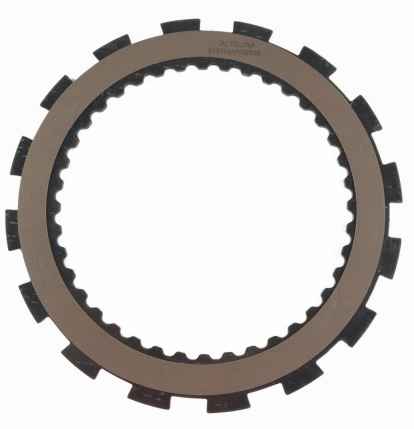
PRODUCT TYPE: TC Friction Clutches

Description & Notes:

A6LF1/2/3, Captive Clutch
Torque Converter Friction Clutches featuring G3™ Material

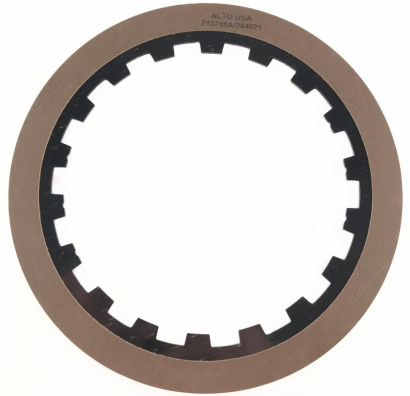
Alto # 213714A 1-sided Friction

REF # HK-CP-1
OD 9.181" (233.20mm)
ID 6.645" (168.78mm)
OAT .140" (3.56mm)
External Teeth 16
Internal Teeth 40



Alto # 213716A 2-Sided Friction

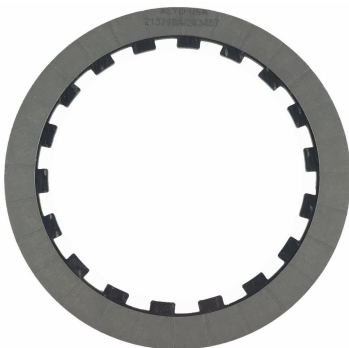
REF # HK-CP-2
OD 8.449" (214.60mm)
ID 6.120" (155.45mm)
OAT .149" (3.78mm)
Internal Teeth 18



A5HF1, A6GF1, Captive Clutch
Torque Converter Friction Clutches featuring HEG Material

Alto # 213718A 1-Sided Friction

REF # HK-CP-3
OD 6.316" (160.43mm)
ID 4.726" (120.04mm)
OAT .092" (2.34mm)
Internal Teeth 18



Alto # 213720A 1-Sided Friction

REF # HK-CP-4
OD 6.621" (168.17mm)
ID 5.150" (130.81mm)
OAT .091" (2.31mm)
External Teeth 36

